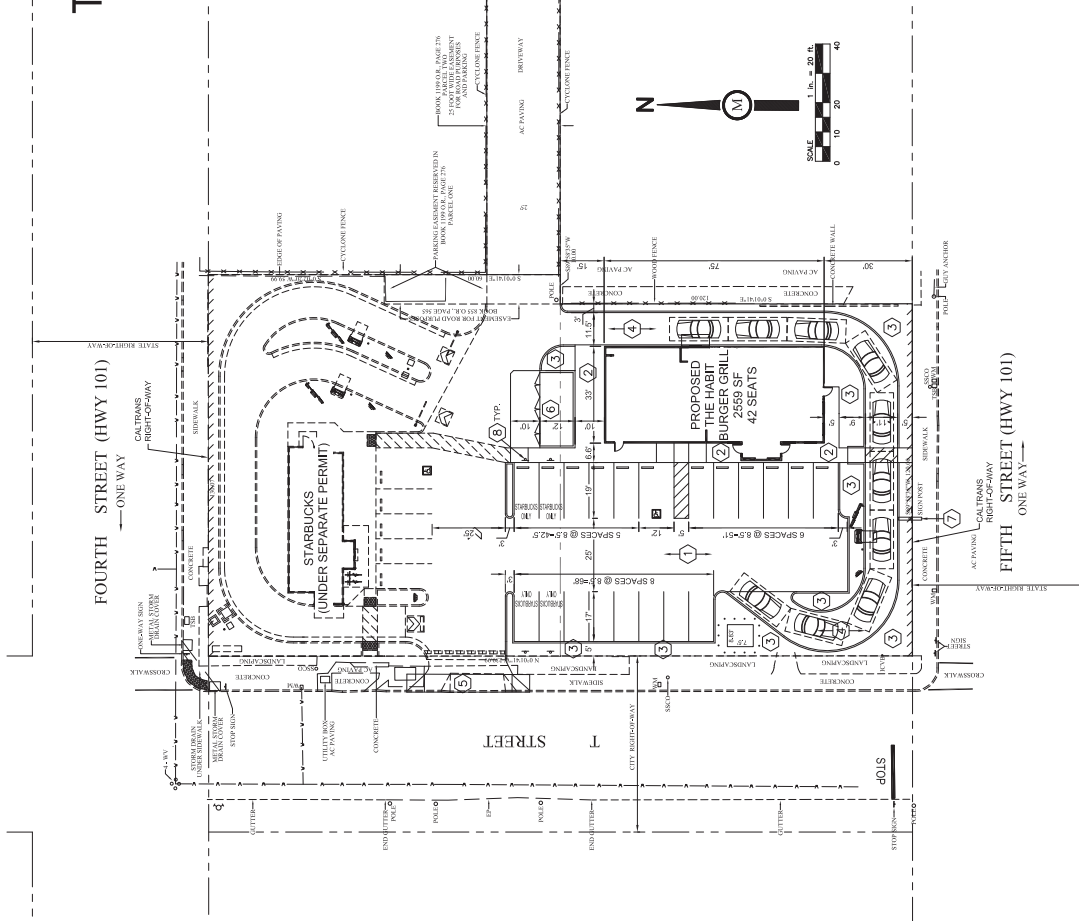


CITY OF EUREKA



VICINITY MAP
NOT TO SCALE

PROPOSED THE HABIT BURGER GRILL 1917 5th STREET EUREKA, CA 95501 A.P.N. 002-105-018



CONSTRUCTION NOTES

- 1 NEW ASPHALT CONCRETE PAVEMENT
- 2 NEW P.C.C. SIDEWALK
- 3 NEW LANDSCAPE AREA
- 4 NEW P.C.C. PAVEMENT AT QUEUING LANES
- 5 EXISTING DRIVEWAY TO REMAIN
- 6 NEW TRASH ENCLOSURE
- 7 EXISTING POLE SIGN WITH READER BOARD TO REMAIN. FACES WILL BE REPLACED WITH NEW TENANT NAME.
- 8 NEW "STARBUCKS ONLY" PARKING SIGN (4 TOTAL SPACES)

PROPERTY DESCRIPTION

REAL PROPERTY IN THE CITY OF EUREKA, COUNTY OF HUMBOLDT, STATE OF CALIFORNIA, DESCRIBED AS FOLLOWS:
NW 1/4 SECTION 23 TEN. R.1W. HUMBOLDT MERIDIAN WITHIN THE LIMITS OF THE CITY OF EUREKA

SITE UTILITIES

SEWAGE DISPOSAL: CITY
WATER SUPPLY: CITY
DRAINAGE: CITY

APPLICANT

VICTOR CHANG
HUMBOLDT COOZ.FUND.LLC
PHONE:(925)426-6200

SITE COVERAGE

RESTAURANT: 2,569 SF (17.8%)
LANDSCAPE AREA: 3,841 SF (26.6%)
PAVED SURFACE AREA: 8,000 SF (55.6%)
TOTAL: 14,400 SF (100%)

PARKING DATA:

RESTAURANT (2,569 SF/200 SF): 13 SPACES
REQUIRED: 13 SPACES
STANDARD SPACE (6.5X19): 15 SPACES
ACCESSIBLE SPACE (14X19): 1 SPACES
PROVIDED: 16 SPACES

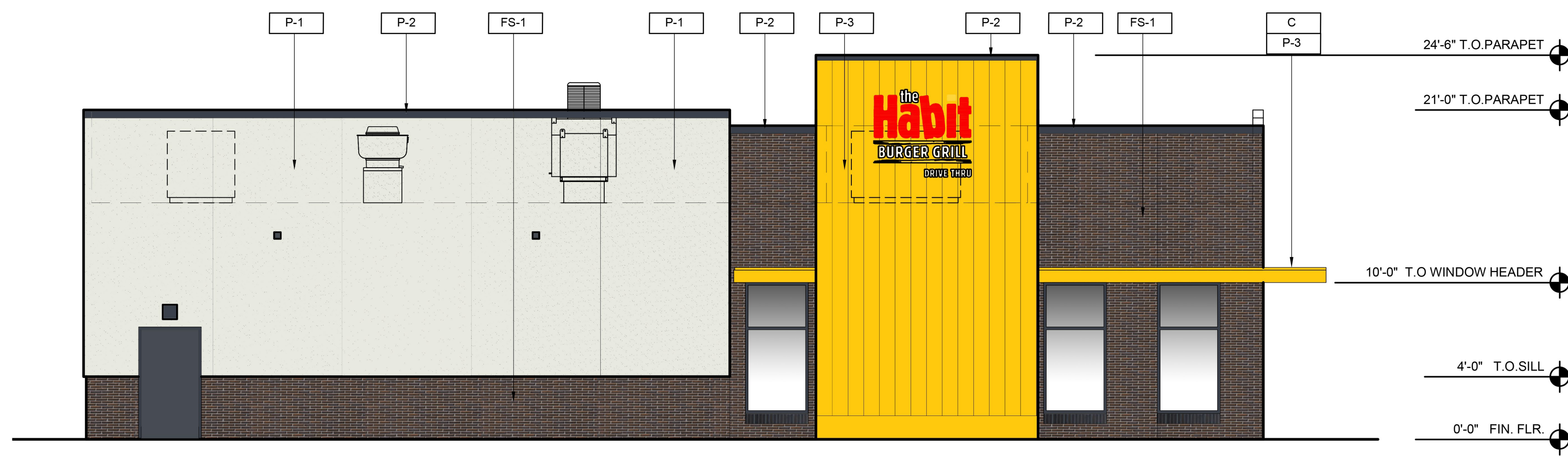
SHEET INDEX

- 1 SITE PLAN / PROJECT DATA
- 2 LANDSCAPE CONCEPT PLAN
- 3 THE HABIT BURGER GRILL EXTERIOR ELEVATIONS
- 4 PHOTOMETRIC PLAN

Milestone Associates Imagineering, Inc.
1000 Lincoln Road, Suite H202, Yuba City, CA 95991
(530) 755-4700

THE HABIT BURGER GRILL
1917 5th STREET, EUREKA, CA 95501
A.P.N. 002-105-018

SITE PLAN / PROJECT DATA
1



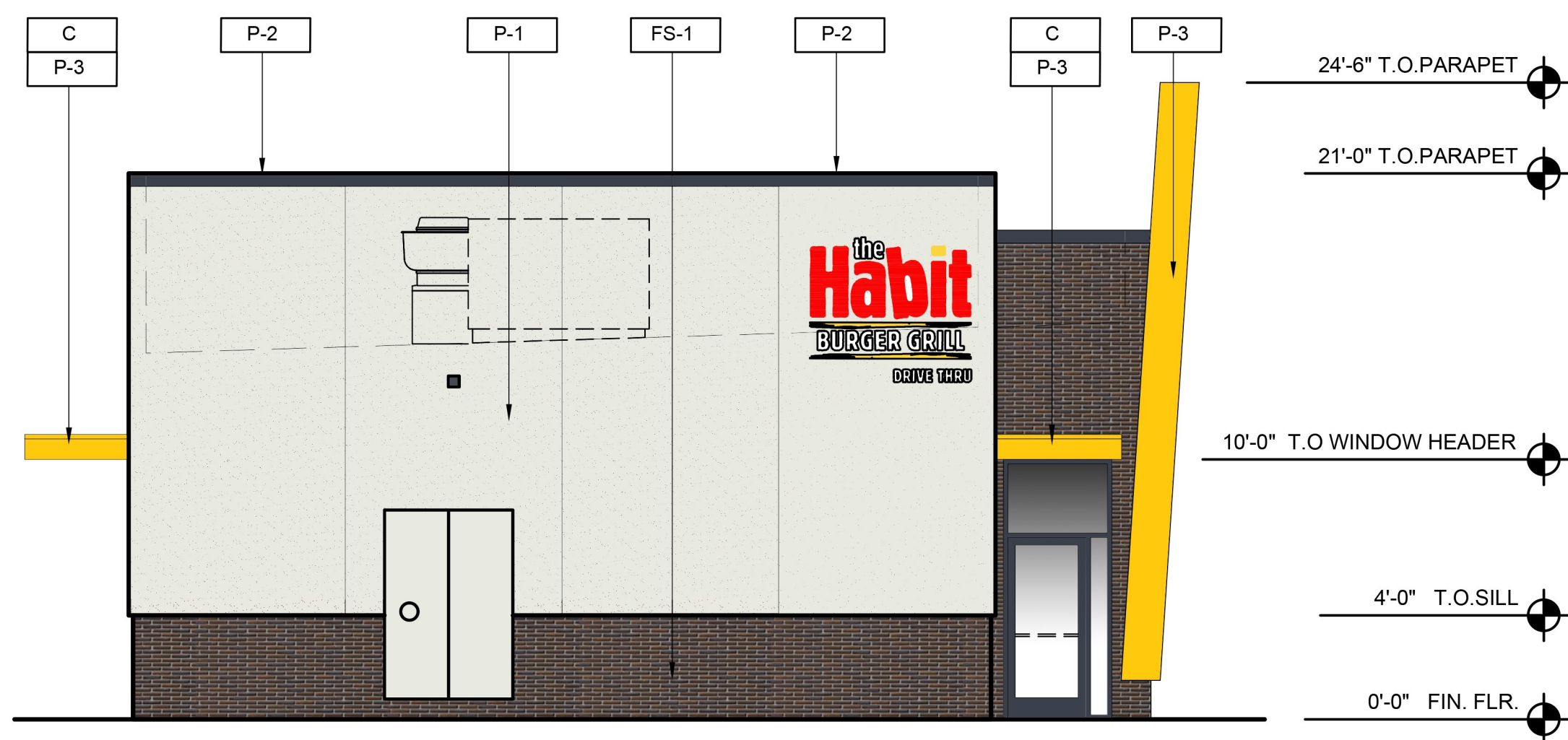
EXTERIOR SIDE ELEVATION (WEST)

3/16" = 1'-0"



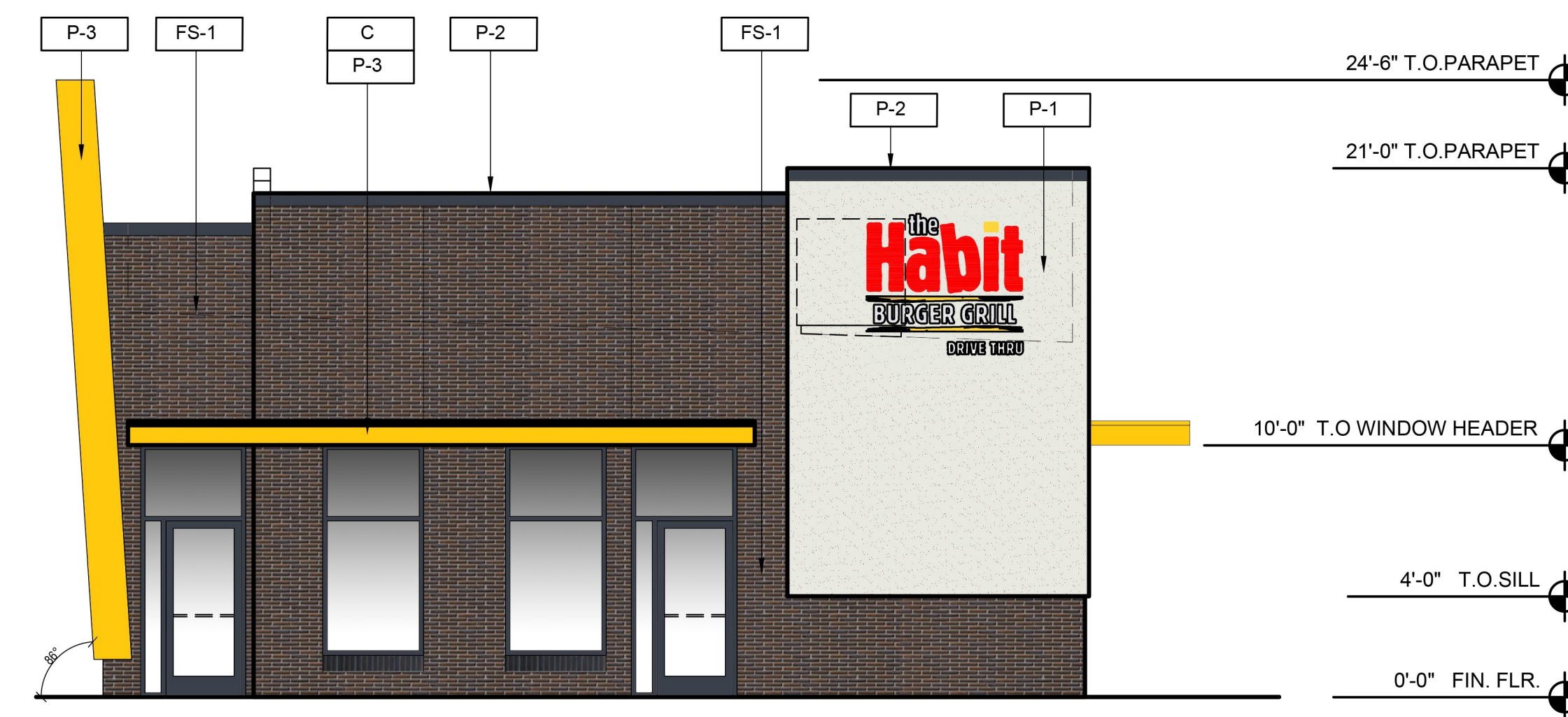
EXTERIOR SIDE ELEVATION (EAST)

3/16" = 1'-0"



EXTERIOR REAR ELEVATION (NORTH)

3/16" = 1'-0"



EXTERIOR FRONT ELEVATION (SOUTH)

3/16" = 1'-0"

GENERAL NOTES:

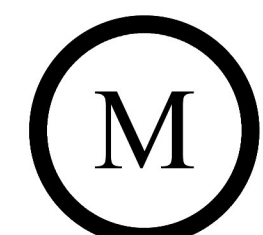
- A. REVEAL LOCATIONS IN FINISH SYSTEM SHOWN ARE TO ALIGN AS CLOSELY AS POSSIBLE TO ELEVATIONS.

MATERIAL LEGEND:

- C CANOPY
- S STUCCO; 7/8" CEMENT PLASTER
TEXTURE: FINE SAND FINISH
- T TRIM AND CORNICE

COLOR LEGEND:

- P-1 DEC793- CHALKY
AS MANUFACTURED BY DUNN EDWARDS
- P-2 DE6378- JET
AS MANUFACTURED BY DUNN EDWARDS
- P-3 RAL 1006 MAIZE
YELLOW
- FS-1 CAFE MOCHA
BRICKWEBB; OLD MILL BRICK



Milestone Associates Imengineering, Inc.

1000 Lincoln Road, Suite H202, Yuba City, CA 95991
(530) 755-4700

THE HABIT BURGER GRILL
1917 5th STREET, EUREKA, CA 95501
A.P.N. 002-105-018

EXTERIOR ELEVATIONS

PRELIMINARY PLANT SCHEDULE				
SYMBOL	BOTANICAL NAME	COMMON NAME	SIZE	WATER USE
ACCENT TREES				
	CERCIS OCCIDENTALIS	WESTERN REDBUD	15 GAL	LOW
	LAGERSTROEMIA X 'MUSKOGEE'	LIGHT LAVENDER CRAPE MYRTLE	15 GAL	LOW
PARKING LOT TREES				
	ACER RUBRUM 'OCTOBER GLORY'	OCTOBER GLORY RED MAPLE	15 GAL	MODERATE
	PISTACIA CHINENSIS 'KEITH DAVEY'	KEITH DAVEY CHINESE PISTACHE	15 GAL	LOW
	ULMUS PARVIFOLIA	CHINESE ELM	15 GAL	MODERATE
ACCENT SHRUBS				
	AGAPANTHUS AFRICANUS 'QUEEN ANNE'	QUEEN ANNE AGAPANTHUS	1 GAL	MODERATE
	HEMEROCALLIS X 'CRANBERRY BABY'	CRANBERRY BABY DAY LILY	1 GAL	MODERATE
	SALVIA X SYLVESTRIS 'MAY NIGHT'	MAY NIGHT SAGE	1 GAL	LOW
GRASSES AND GRASS-LIKE PLANTS				
	CALAMAGROSTIS X ACUTIFLORA 'KARL FOERSTER'	FEATHER REED GRASS	5 GAL	LOW
	DIETES BICOLOR	FORTNIGHT LILY	5 GAL	LOW
	MUHLENBERGIA CAPILLARIS	PINK MUHLY GRASS	1 GAL	LOW
GROUNDCOVERS				
	ARCTOSTAPHYLOS 'EMERALD CARPET'	EMERALD CARPET MANZANITA	1 GAL	LOW
	COTONEASTER DAMMERI 'STRIEBS FINDLING'	STRIEBS FINDLING COTONEASTER	1 GAL	LOW
	MYOPORUM PARVIFOLIUM 'PINK'	PINK TRAILING MYOPORUM	1 GAL	LOW
MEDIUM HEIGHT SHRUBS				
	CALLISTEMON VIMINALIS 'LITTLE JOHN'	LITTLE JOHN BOTTLE BRUSH	1 GAL	LOW
	SALVIA MICROPHYLLA 'HOT LIPS'	HOT LIPS SALVIA	1 GAL	LOW
	NANDINA DOMESTICA 'GULF STREAM'	GULF STREAM NANDINA	1 GAL	LOW
SCREEN SHRUBS / HEDGES				
	LIGUSTRUM JAPONICUM 'TEXANUM'	WAXLEAF PRIVET	5 GAL	LOW
	OLEA EUROPAEA 'LITTLE OLLIE'	LITTLE OLLIE OLIVE	5 GAL	LOW
	XYLOSMA CONGESTUM 'COMPACTA'	COMPACT XYLOSMA	5 GAL	LOW
VINES				
	FICUS BENJAMINA	WEeping FIG	1 GAL	MODERATE

* THE PLANTS LISTED IN THE PRELIMINARY PLANT SCHEDULE ABOVE REPRESENTS A SAMPLE OF THE TYPES OF TREES, SHRUBS, AND GROUNDCOVERS THAT WE ANTICIPATE BEING APPROPRIATE FOR THIS LOCATION AND REPRESENTS THE OVERALL DESIGN STYLE AND THEME. THE FINAL PLANT SELECTION WILL DRAW FROM THIS LIST; IN ADDITION, NOT ALL PLANTS LISTED MAY BE USED AND NEW PLANT SPECIES MAY BE ADDED. HOWEVER, THE PLANTING DESIGN INTENT WILL REMAIN CONSISTENT WITH THIS PLAN AND PLANT SCHEDULE.

PRELIMINARY IRRIGATED LANDSCAPE WATER EFFICIENCY TABLE							
WATER BUDGET CALCULATIONS							
MAXIMUM APPLIED WATER ALLOWANCE							
MAWA=(Eto)(0.62)((0.45xLA)+((1.0-0.45)xSLA))							
LOCAL Eto=	LA =	SLA =				MAWA TOTAL=	
27.5	3,370	0				25,856 GAL.	
ESTIMATED TOTAL WATER USE							
ETWU=(Eto)(0.62)((PFxHA)/IE)+SLA							
LOCAL Eto=	PF =	LA =	SLA =			ETWU TOTAL=	
27.5	SEE BELOW	3,370	0			23,424 GAL.	
HYDROZONE INFORMATION TABLE							
HYDROZONE TAG	PLANT FACTOR (PF)	IRRIGATION METHOD	IRRIGATION EFFICIENCY (IE)	ETAf (PF/IE)	LANDSCAPE AREA (SF)	ETAf X AREA	ESTIMATED TOTAL WATER USE (ETWU)
LANDSCAPE AREAS							
(TREE/RWS/MODERATE)	0.50	RWS	0.81	0.62	509 SF	314	5,357 GAL
(SHRUB/DRIP/LOW)	0.30	BUBBLER	0.81	0.37	2,861 SF	1,060	18,067 GAL
					TOTAL AREA= 3,370 SF	TOTAL= 1,374	TOTAL = 23,424 GAL
SPECIAL LANDSCAPE AREAS							
				1	0 SF	0	0 GAL
					TOTAL AREA= 0 SF	TOTAL= 0	TOTAL = 0 GAL

* THIS INFORMATION DERIVED FROM PLANT FACTOR DESIGNATIONS IN THE WUCOLS IV DOCUMENT.

PROJECT IRRIGATION NOTE

THE PROPOSED PLANTING DESIGN FOR THIS PROJECT IS COMPRISED OF PREDOMINATELY LOW-WATER USE TREES, SHRUBS, AND GROUNDCOVERS WITH MODERATE WATER USE PLANT AT PROJECT AND BUILDING ENTRIES. THE TREES WILL BE IRRIGATED WITH A ROOT WATERING SYSTEM AND A SURFACE SUPPLEMENTAL BUBBLER. THE SHRUBS AND GROUNDCOVERS WILL BE IRRIGATED WITH LOW VOLUME POINT SOURCE DRIP/BUBBLERS TO PROVIDE ADEQUATE WATER TO THE PLANT ROOT ZONE. THE SITE IRRIGATION WILL BE CONTROLLED BY A "SMART" CONTROLLER WITH WEATHER SENSING CAPABILITIES (HUNTER, RAINBIRD, OR EQUAL). THE POINT OF CONNECTION WILL UTILIZE A BACKFLOW PREVENTER, MASTER VALVE, AND FLOW SENSOR TO COMPLY WITH ALL APPLICABLE LOCAL AND STATE WATER EFFICIENT LANDSCAPE ORDINANCE CODES.

PRELIMINARY PARKING LOT SHADING CALCULATIONS

SHADING AREA BY TREE TYPE:	FULL	3/4	1/2	1/4
PARKING LOT TREES:	0@962=0	1@720=720	5@481=2,405	0@240=240

TOTAL AREA SHADED BY TREES: 3,125 SF

TOTAL PARKING LOT AREA: 6,101 SF

TOTAL PARKING LOT AREA REQUIRING SHADING: 3,051 SF

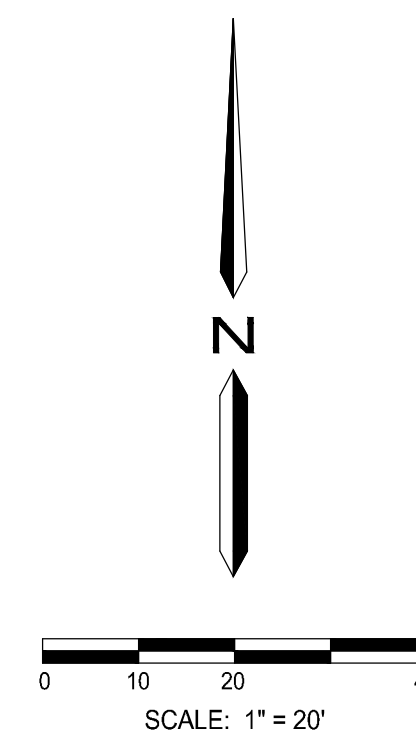
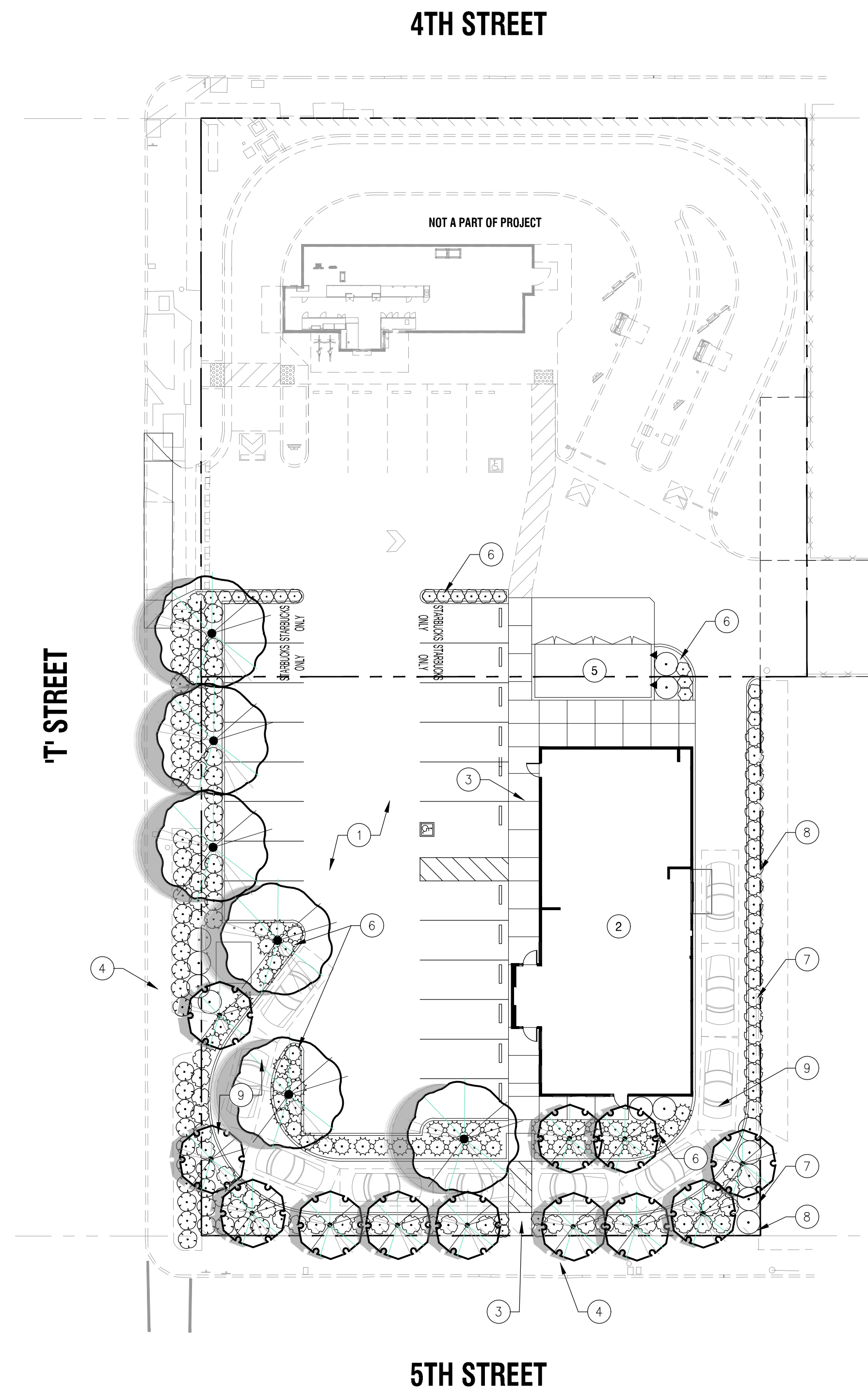
PERCENT OF SHADE PROVIDED: 51.2%

LANDSCAPE AREA

TOTAL PROJECT AREA - PARCEL SIZE:	17,537 SF	
TOTAL LANDSCAPE AREA:	3,370 SF	100%
SHRUB AND GROUNDCOVER AREA:	3,370 SF	100%
PERCENT OF SITE IN LANDSCAPE:		19.2%

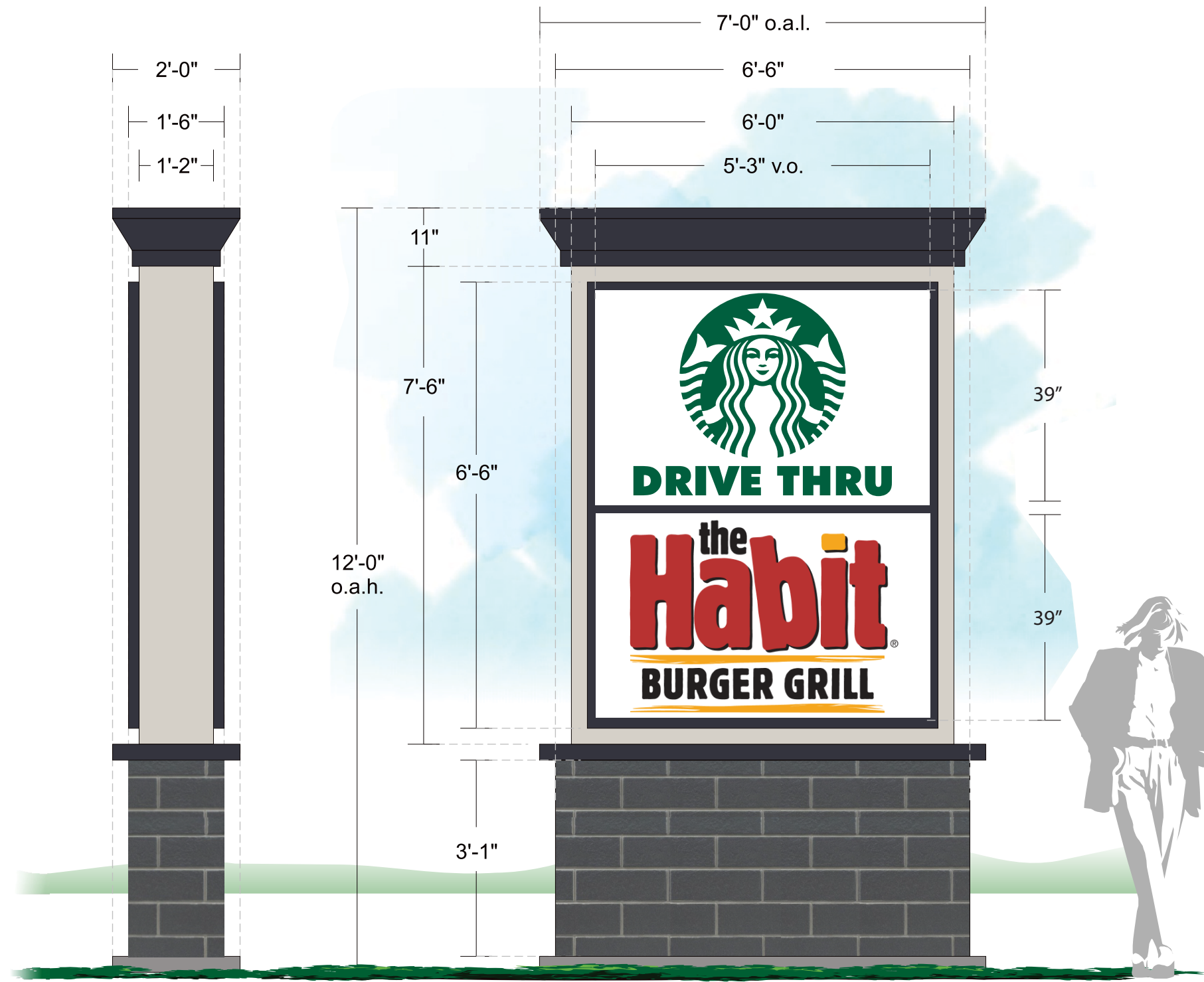
LEGEND

- 1 PARKING LOT - PER CIVIL ENGINEERING PLANS
- 2 PROPOSED RESTAURANT BUILDING
- 3 PROPOSED SIDEWALK
- 4 EXISTING CITY SIDEWALK
- 5 TRASH ENCLOSURE - PER ARCHITECT'S PLANS
- 6 LANDSCAPE AREA
- 7 EXISTING MASONRY WALL
- 8 EXISTING CHAIN LINK FENCE
- 9 DRIVE-THRU WITH MENU BOARDS



NOTE: THIS DOCUMENT IS FOR CONCEPTUAL PLANNING PURPOSES ONLY. THIS DOCUMENT IS MARKED PRELIMINARY AND NOT TO BE USED FOR CONSTRUCTION PURPOSES. ANY IMAGES SHOWN ARE TO CONVEY CONCEPT ONLY. CONSTRUCTION PLANS WILL VARY DEPENDING ON BUDGET, CLIENT DIRECTION, COMMUNITY INPUT AND FINAL MATERIALS SELECTION.

PRELIMINARY



End View

Sign A - D/F Illuminated Monument
Scale: 1/2"=1'-0"

Specifications

Cabinet - Fab. Aluminum texcoted & painted SW 9566 Grey Heron. Standard 1 1/2" mechanical retainer system texcoted & painted SW 7069 "Iron Ore". 1 1/2" tenant divider bar texcoted & painted SW 7069 "Iron Ore".

Tenant Panels

Faces - White lexan w/ 1st surface vinyl overlays.

Vinyl - (tenant copy by others)

"Starbucks" - 3M 3630-109 Kelly Green.

"Sandwich Shop" - 3M 3630-22 Black.

Lighting - White LED lighting.

Cornice - Fab. Aluminum texcoted & painted SW 7069 "Iron Ore".

Trim Cladding - Fab. Aluminum texcoted & painted SW 7069 "Iron Ore".

Base Cladding - Fiber Cement Board Siding "Nichiha" Modern Brick.

Mow Strip - 3" concrete - natural finish.

Materials Schedule

		
SW 7069 Iron Ore	SW 9566 Grey Heron	Fiber Cement Board Siding "Nichiha" Modern Brick

Client Review Status

Mfg. Note

Revision Date

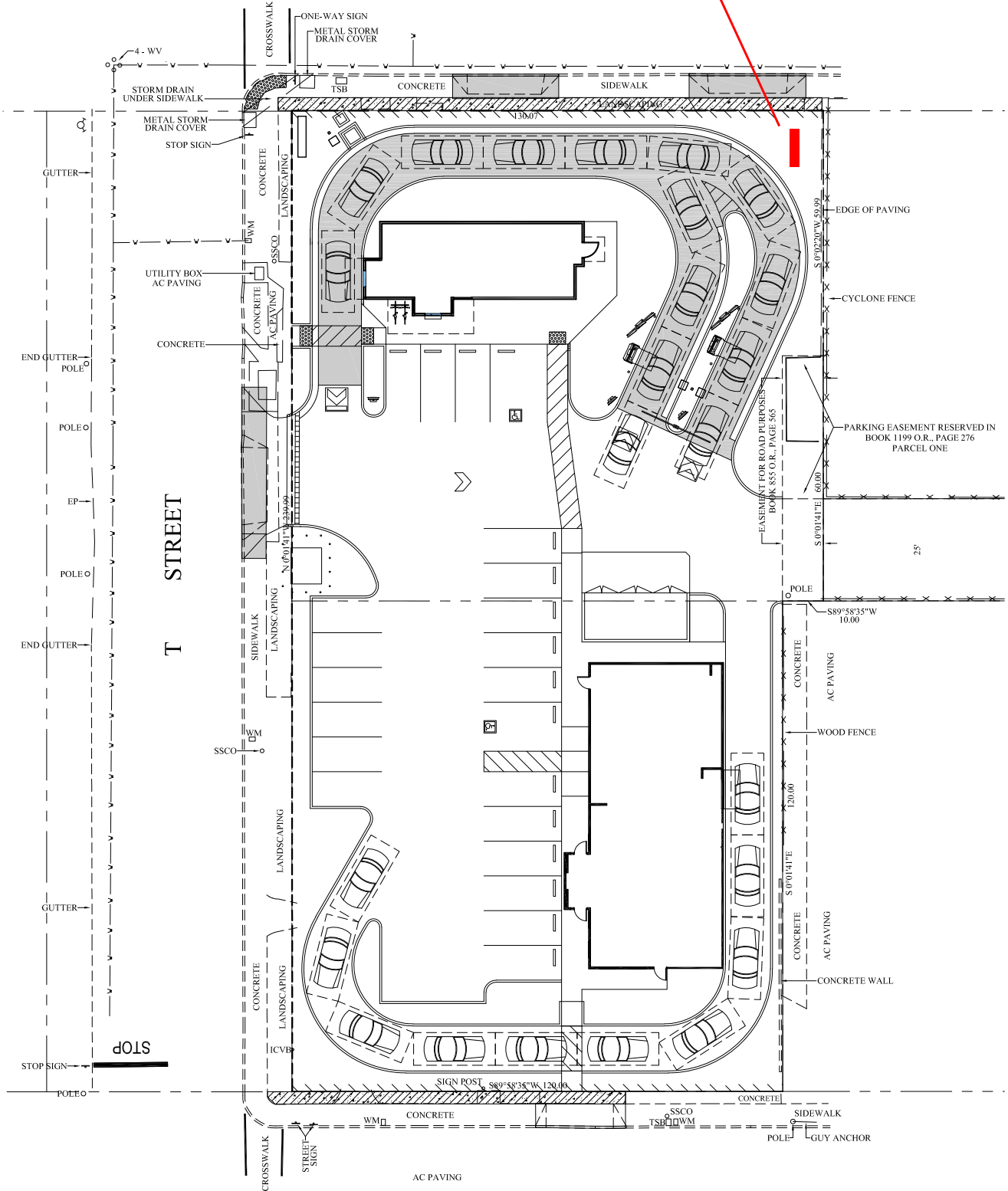
Project Information

Page 1

Client: _____
 Contact: _____
 Address: _____
 City/ST/Zip: Eureka, CA 95501
 Phone: _____
 Fax: _____
 Sales: _____ Designer: _____



FOURTH STREET (HWY 101)
← ONE WAY



FIFTH STREET (HWY 101)
ONE WAY →