

slope evidence



104-232-012 & 105-141-001 Slope Evidence

Humboldt County Planning and Building Department

Printed: January 2, 2022

Web AppBuilder 2.0 for ArcGIS

Map Disclaimer:

While every effort has been made to assure the accuracy of this information, it should be understood that it does not have the force & effect of law, rule, or regulation. Should any difference or error occur, the law will take precedence.

- Highways and Roads**
- Local Roads
 - Private or Unclassified
 - Major River or Stream
 - Intermittent

- Slope less than 15%**
- Parcels
 - Property Boundary
 - Cannabis Activity Area (Proposed)

Areas of Cannabis Activity are approximate. Please refer to Site Plan for specific metrics and layout.



RF = 1:4,514

1 in = 376 ft

Sources: Source: Esri, Maxar, GeoEye, Earthstar Geographics, CNES/Airbus DS, USDA, USGS, AeroGRID, IGN, and the GIS User Community
Humboldt County GIS
Esri, HERE, Garmin, (c) OpenStreetMap contributors, and the GIS user community
FRAP, FEMA, USGS, ESA, CGS



104-232-012 & 105-141-001 Soils

Humboldt County Planning and Building Department

Printed: January 2, 2022 Web AppBuilder 2.0 for ArcGIS

Map Disclaimer:
While every effort has been made to assure the accuracy of this information, it should be understood that it does not have the force & effect of law, rule or regulation. Should any difference or error occur, the law will take precedence.

- Highways and Roads**
- Local Roads
 - Private or Unclassified
 - Major River or Stream
 - Intermittent

- Property Boundary
- Cannabis Activity Area
- Prime Ag Soils - if irrigated
- Prime Ag Soils
- Parcels



Sources: Source: Esri, Maxar, GeoEye, Earthstar, GeoGraphics, CNES/Airbus DS, USDA, USGS, AeroGRID, IGN, and the GIS User Community
NRCIS
Humboldt County GIS
Esri, HERE, Garmin, (c) OpenStreetMap contributors, and the GIS user community

HISTORIC AERIALS: 104-232-012 & 105-141-001



1993

104-232-012
105-141-001

Image U.S. Geological Survey

Imagery Date: 6/11/1993

40°19'23.37" N 124°16'37.18" W elev 0 ft ave alt 4065 ft

Google Earth





8/2004

2004

104-232-012
105-141-001

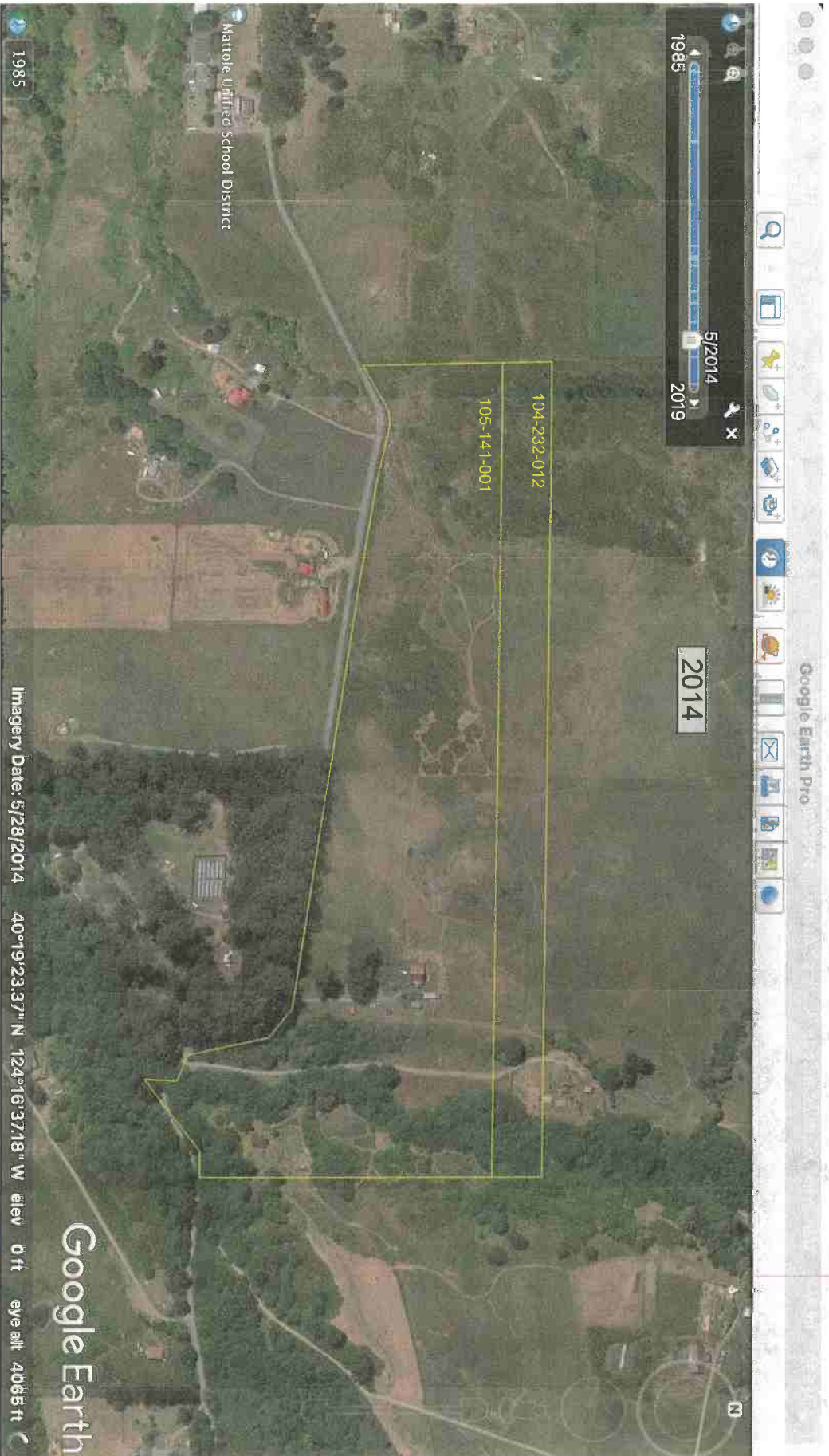
Matrole Unified School District

Image © 2021 Maxar Technologies

Imagery Date: 8/8/2004 40°19'23.37" N 124°16'37.18" W elev 0 ft eye alt 4065 ft

Google Earth





Mattole Unified School District

1985

5/2014

2019

2014

104-232-012

105-141-001

1985

Imagery Date: 5/28/2014

40°19'23.37" N 124°16'37.18" W elev 0ft

eye alt 4065ft

Google Earth

RECEIVED
MAR - 9 2022
Humboldt County
PLANNING