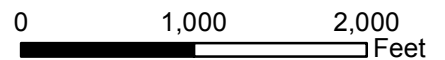


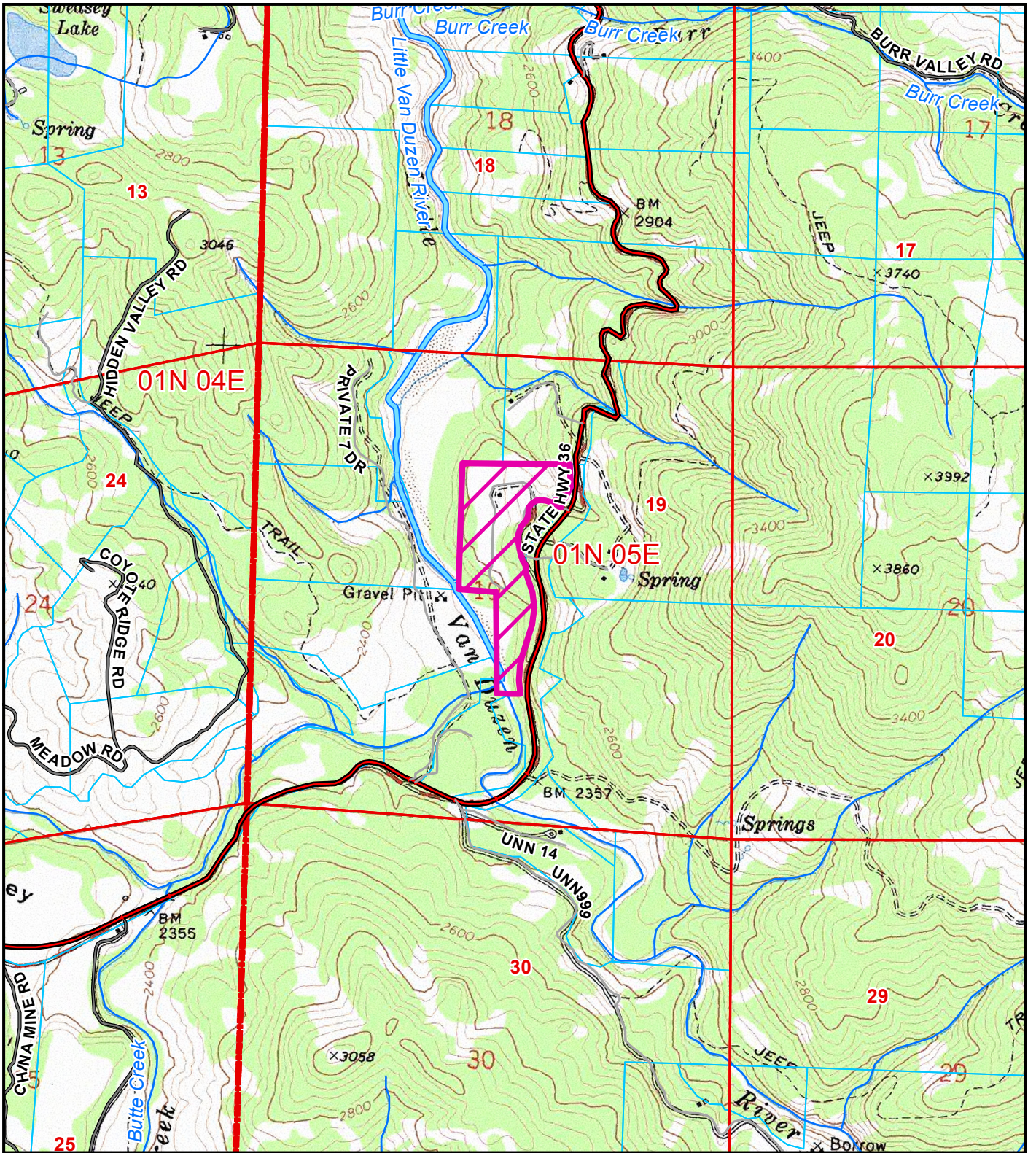
AERIAL MAP
PROPOSED NOR CAL 420 PATIENT COLLECTIVE, INC.
DINSMORE AREA
CUP-16-833
APN: 210-101-011
T01N R05E S19 HB&M (LARABEE VALLEY)

Project Area = 



This map is intended for display purposes and should not be used for precise measurement or navigation. Data has not been completely checked for accuracy.





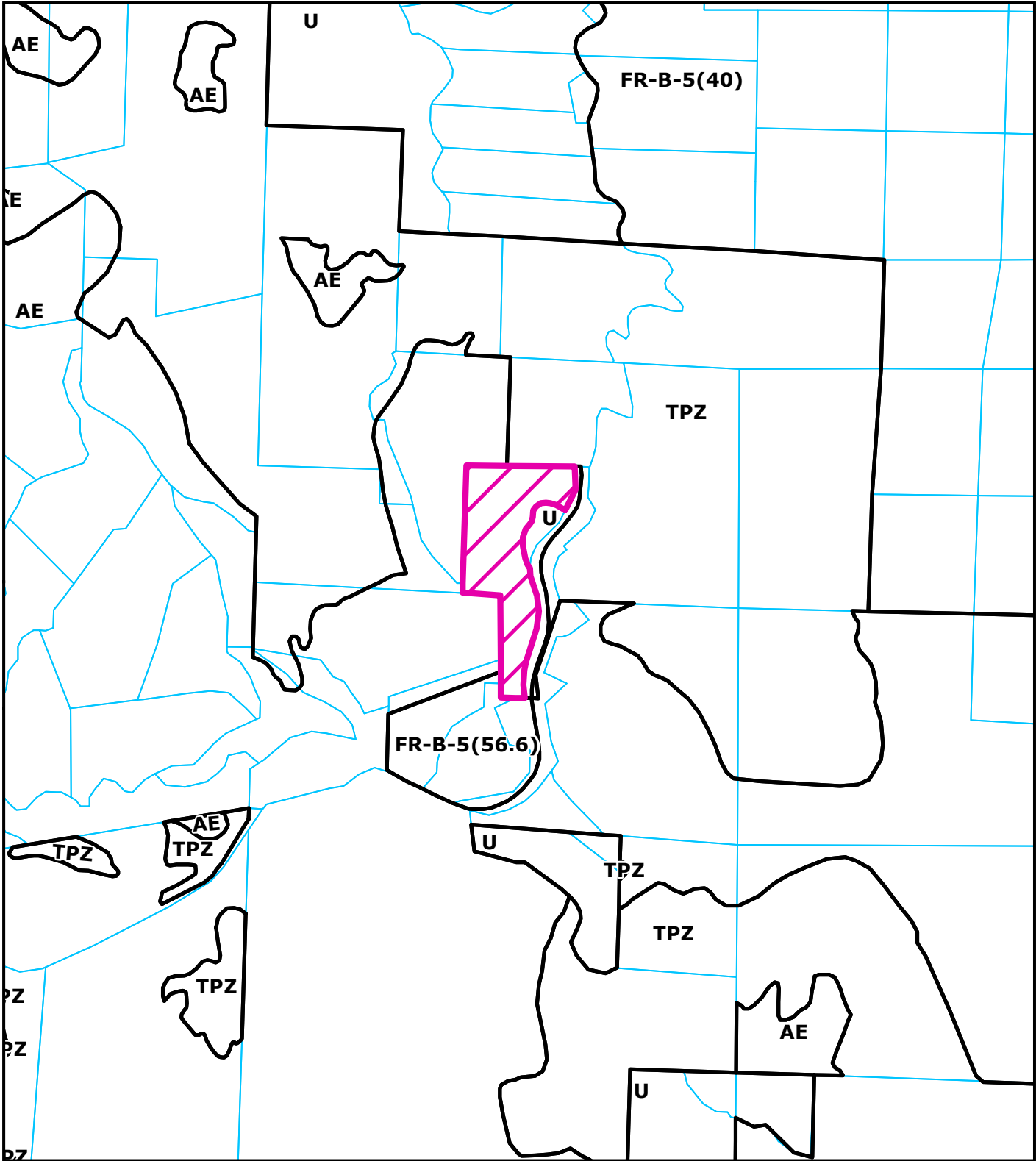
TOPO MAP
PROPOSED NOR CAL 420 PATIENT COLLECTIVE, INC.
DINSMORE AREA
CUP-16-833
APN: 210-101-011
T01N R05E S19 HB&M (LARABEE VALLEY)

Project Area =



This map is intended for display purposes and should not be used for precise measurement or navigation. Data has not been completely checked for accuracy.





ZONING MAP
PROPOSED NOR CAL 420 PATIENT COLLECTIVE, INC.
DINSMORE AREA
CUP-16-833
APN: 210-101-011
T01N R05E S19 HB&M (LARABEE VALLEY)

Project Area = 



This map is intended for display purposes and should not be used for precise measurement or navigation. Data has not been completely checked for accuracy.

