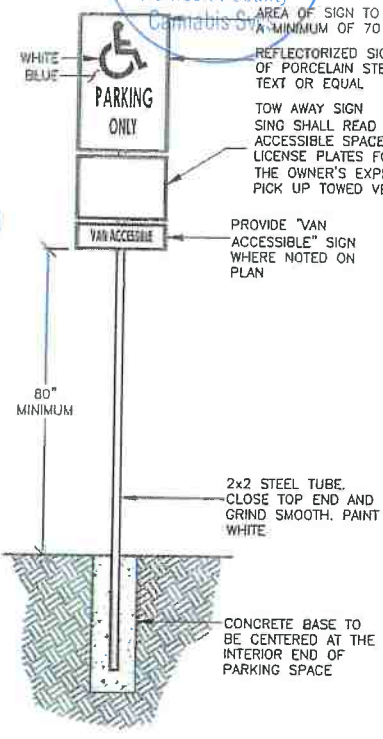
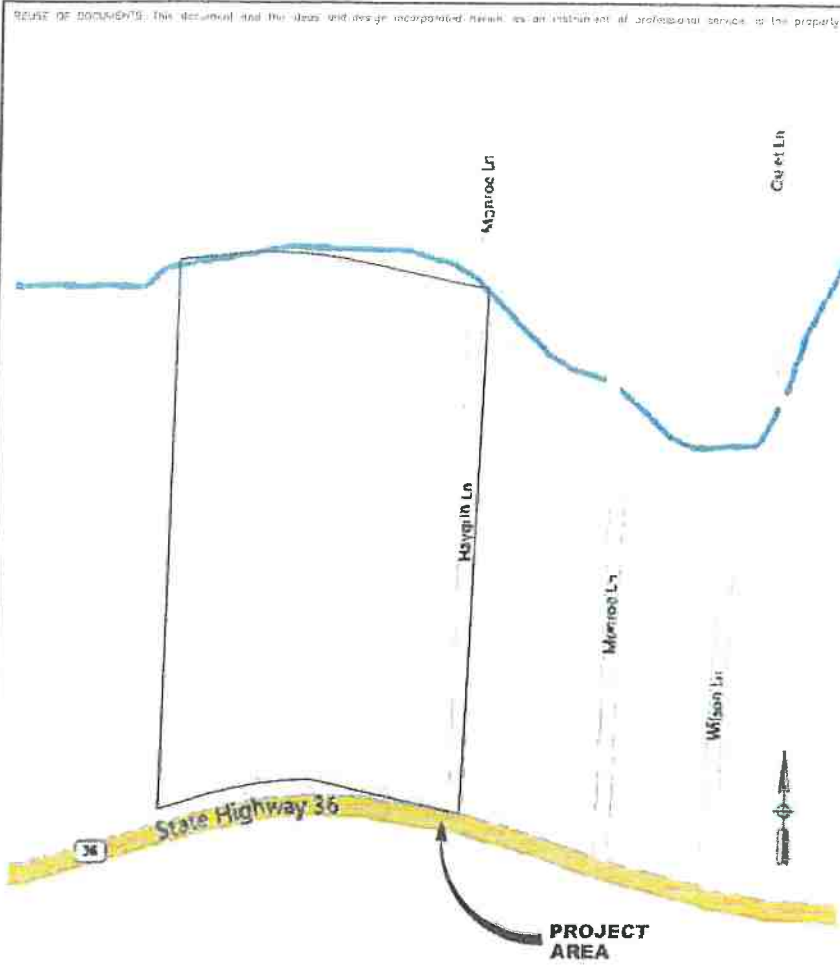
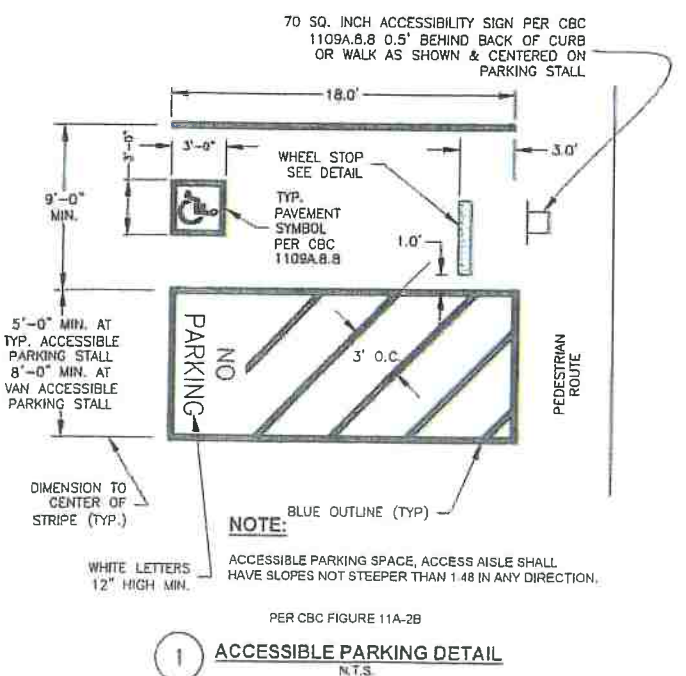
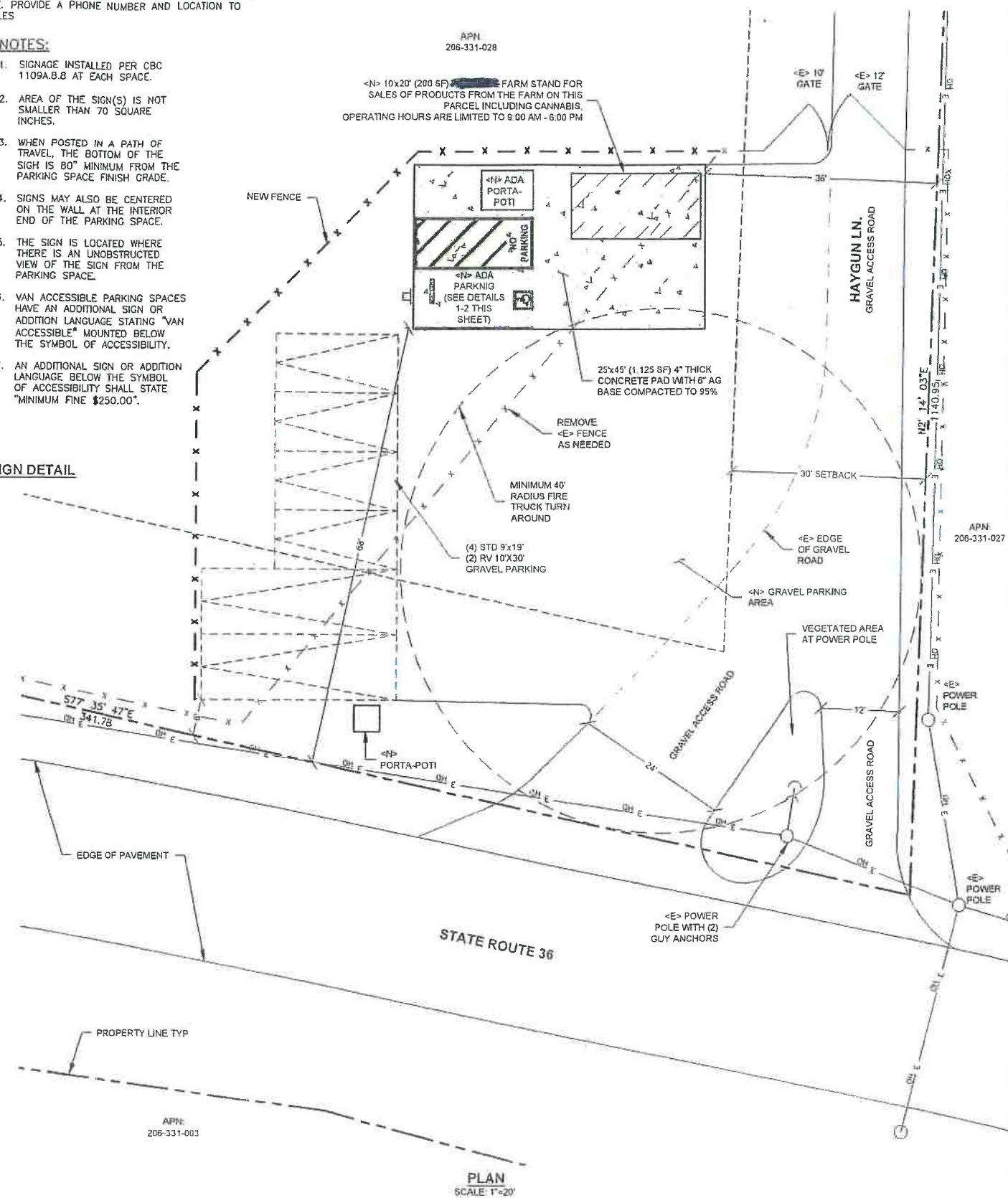


RECEIVED
MAY - 3 2023
Humboldt County
Cannabis Svcs

Sheet List Table	
Sheet Title	Sheet Number
6287 HWY 36 FARM STAND	G0.1
DRIVEWAY APPROACH PLAN	C1.0

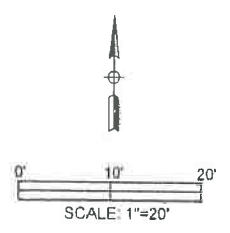


- NOTES:
- SIGNAGE INSTALLED PER CBC 1109A.8.8 AT EACH SPACE.
 - AREA OF THE SIGN(S) IS NOT SMALLER THAN 70 SQUARE INCHES.
 - WHEN POSTED IN A PATH OF TRAVEL, THE BOTTOM OF THE SIGN IS 80" MINIMUM FROM THE PARKING SPACE FINISH GRADE.
 - SIGNS MAY ALSO BE CENTERED ON THE WALL AT THE INTERIOR END OF THE PARKING SPACE.
 - THE SIGN IS LOCATED WHERE THERE IS AN UNOBSTRUCTED VIEW OF THE SIGN FROM THE PARKING SPACE.
 - VAN ACCESSIBLE PARKING SPACES HAVE AN ADDITIONAL SIGN OR ADDITION LANGUAGE STATING "VAN ACCESSIBLE" MOUNTED BELOW THE SYMBOL OF ACCESSIBILITY.
 - AN ADDITIONAL SIGN OR ADDITION LANGUAGE BELOW THE SYMBOL OF ACCESSIBILITY SHALL STATE "MINIMUM FINE \$250.00".



APPROVED
OCT 20 2022
Humboldt County
PLANNING

RECEIVED
SEP 15 2022
Humboldt County
Cannabis Svcs



NO.	HISTORY / REVISION	BY / CHK.	DATE

NEW ROADSIDE FARM STAND
6287 HIGHWAY 36, CARLOTA, CA 95528
6287 HWY 36 FARM STAND
APN: 206-331-028

DRAWN	JOB
CHECK	VL
APPROVED	VL
DATE	1-19-2022
JOB NUMBER	1,19,2022
SHEET	G0.1

(707) 401-1558 humboldtdraftingservices@gmail.com