




**AERIAL MAP  
 PROPOSED MAD RIVER MEDICINALS INC  
 DINSMORE AREA  
 CUP-16-707  
 APN: 208-251-002  
 T02N R05E S34 HB&M (BLAKE MOUNTAIN)**

**Project Area =** 

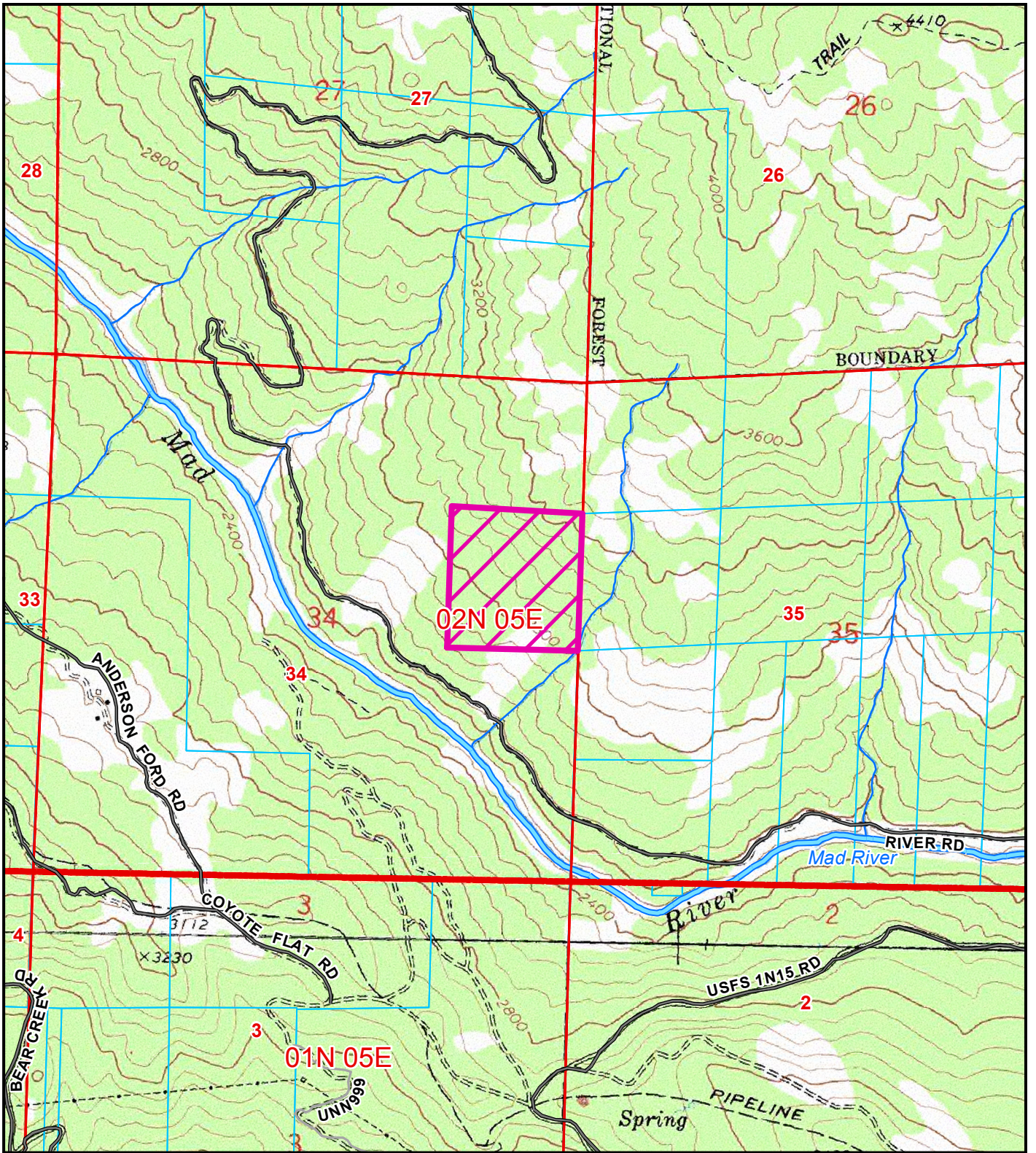
This map is intended for display purposes and should not be used for precise measurement or navigation. Data has not been completely checked for accuracy.

0 1,000 2,000 Feet







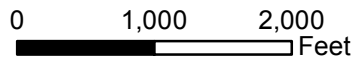


Project Area = 

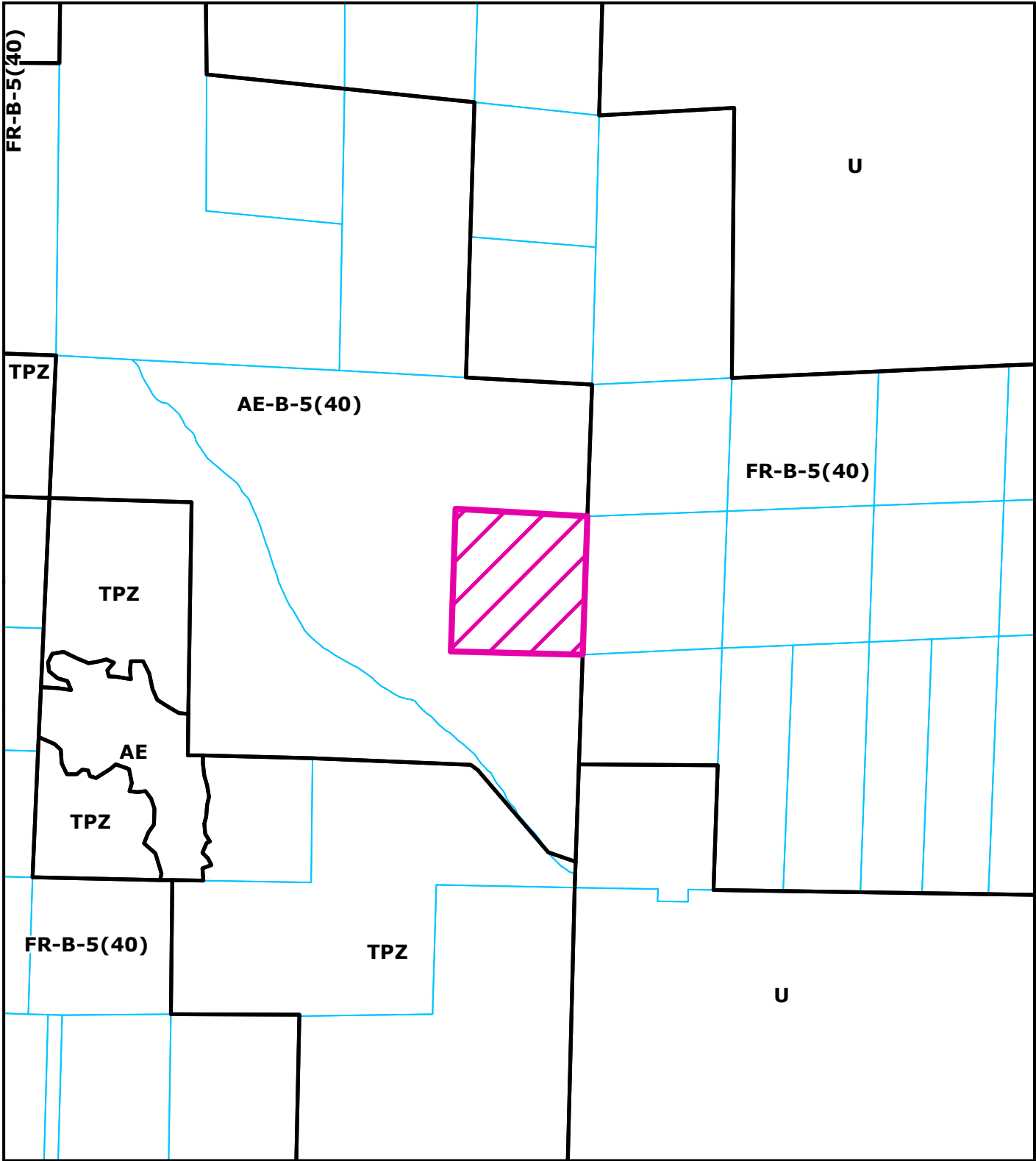
**TOPO MAP**  
**PROPOSED MAD RIVER MEDICINALS INC**  
**DINSMORE AREA**  
**CUP-16-707**  
**APN: 208-251-002**  
**T02N R05E S34 HB&M (BLAKE MOUNTAIN)**




This map is intended for display purposes and should not be used for precise measurement or navigation. Data has not been completely checked for accuracy.









**ZONING MAP**  
**PROPOSED MAD RIVER MEDICINALS INC**  
**DINSMORE AREA**  
**CUP-16-707**  
**APN: 208-251-002**  
**T02N R05E S34 HB&M (BLAKE MOUNTAIN)**

**Project Area =** 

  
 0      1,000      2,000  
 Feet

This map is intended for display purposes and should not be used for precise measurement or navigation. Data has not been completely checked for accuracy.