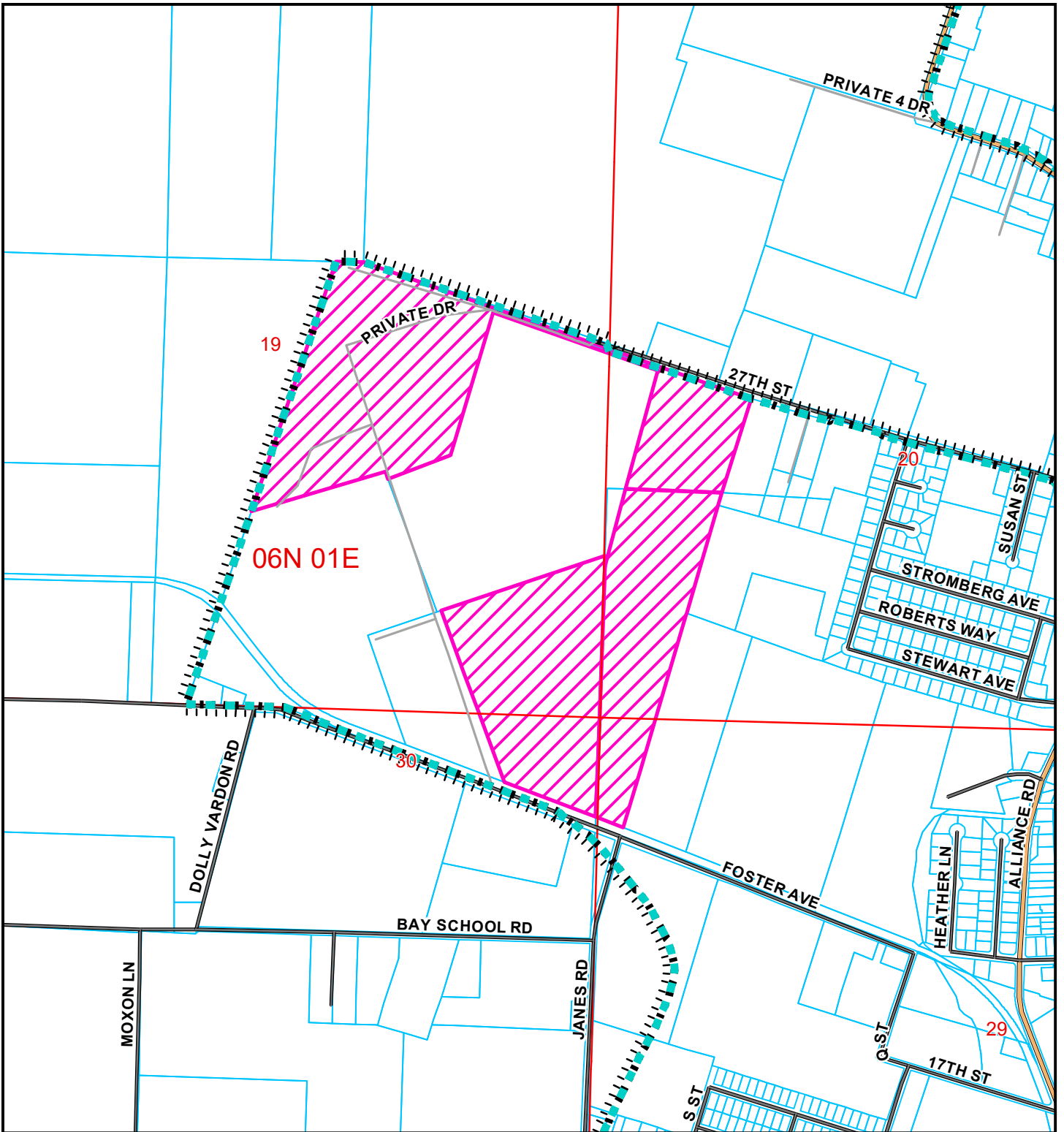


ATTACHMENT 2

Location Maps



LOCATION MAP

Project Area = 

**PROPOSED RENEWABLE AMERICA LLC
CONDITIONAL USE PERMIT**

Coastal Zone Boundary 

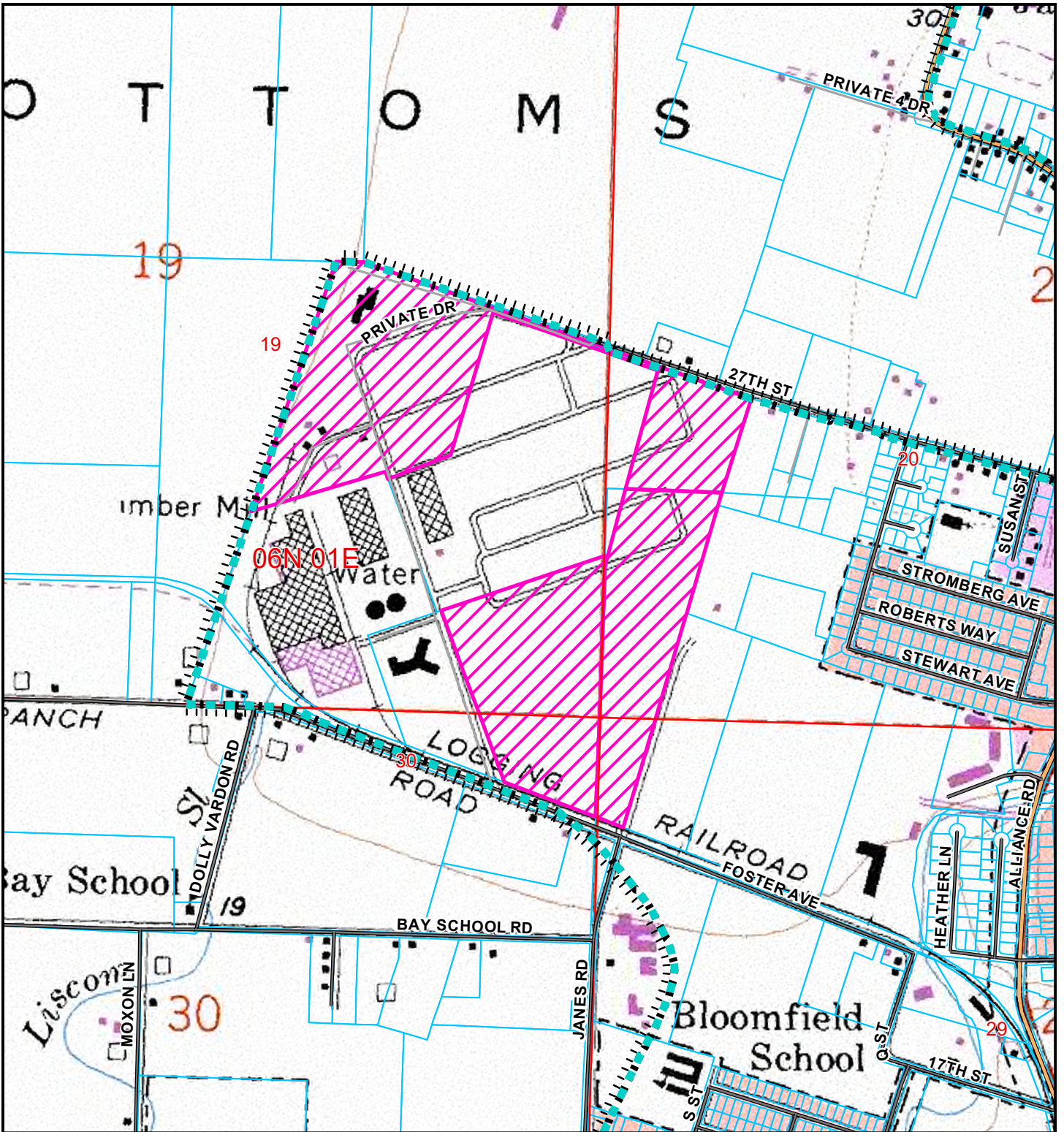
**ARCATA AREA
PLN-2022-17922**

APN: 505-151-012, 506-231-019, -022

T06N R1E S19-20, 29-30 HB&M (Arcata North)

This map is intended for display purposes and should not be used for precise measurement or navigation. Data has not been completely checked for accuracy.





TOPO MAP

Project Area = 

**PROPOSED RENEWABLE AMERICA LLC
CONDITIONAL USE PERMIT**

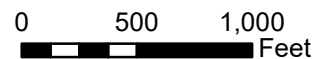
Coastal Zone Boundary 

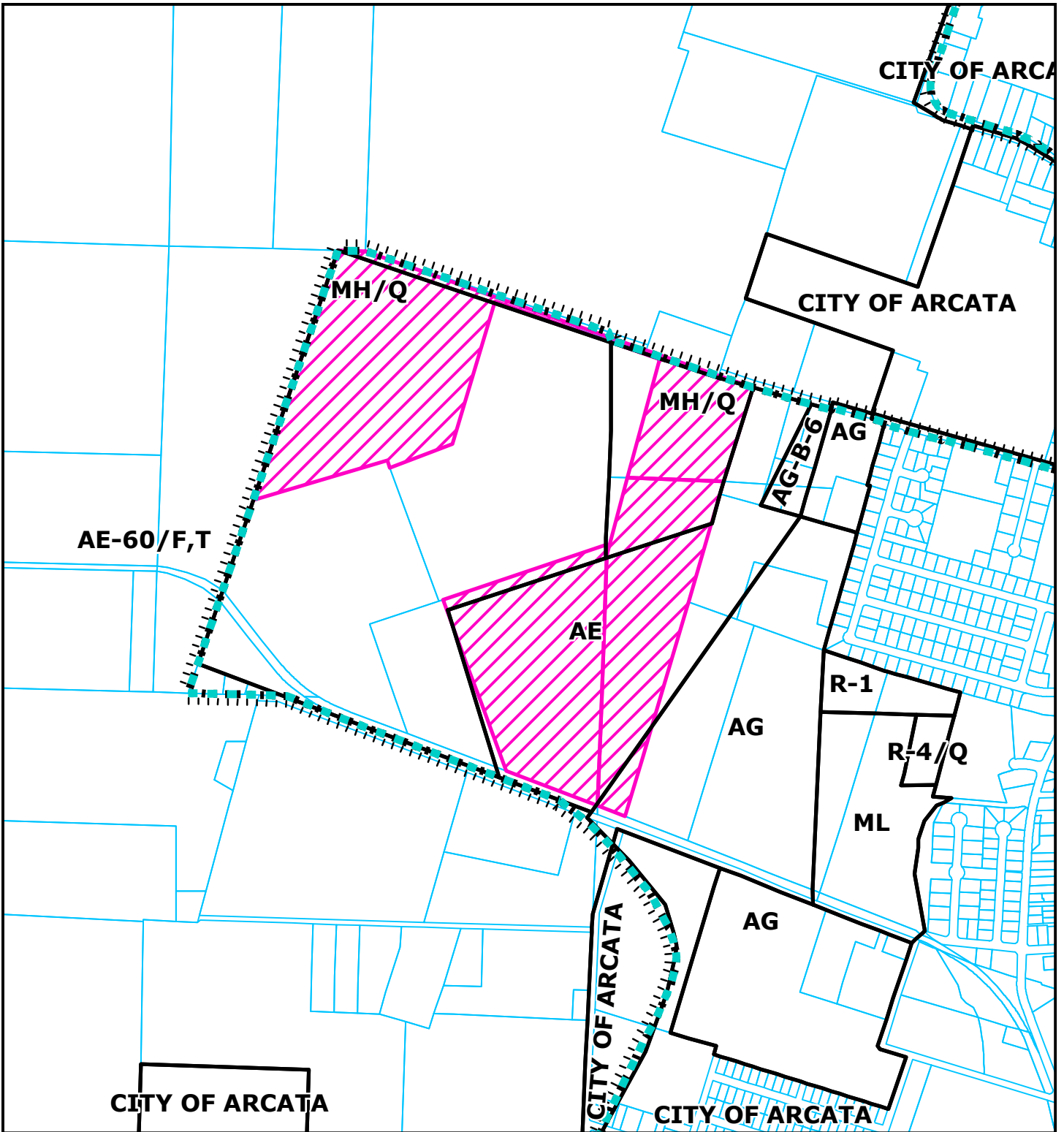
**ARCATA AREA
PLN-2022-17922**

APN: 505-151-012, 506-231-019, -022

T06N R1E S19-20, 29-30 HB&M (Arcata North)

This map is intended for display purposes and should not be used for precise measurement or navigation. Data has not been completely checked for accuracy.





ZONING MAP

Project Area = 

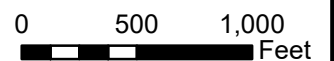
**PROPOSED RENEWABLE AMERICA LLC
CONDITIONAL USE PERMIT**

Coastal Zone Boundary 

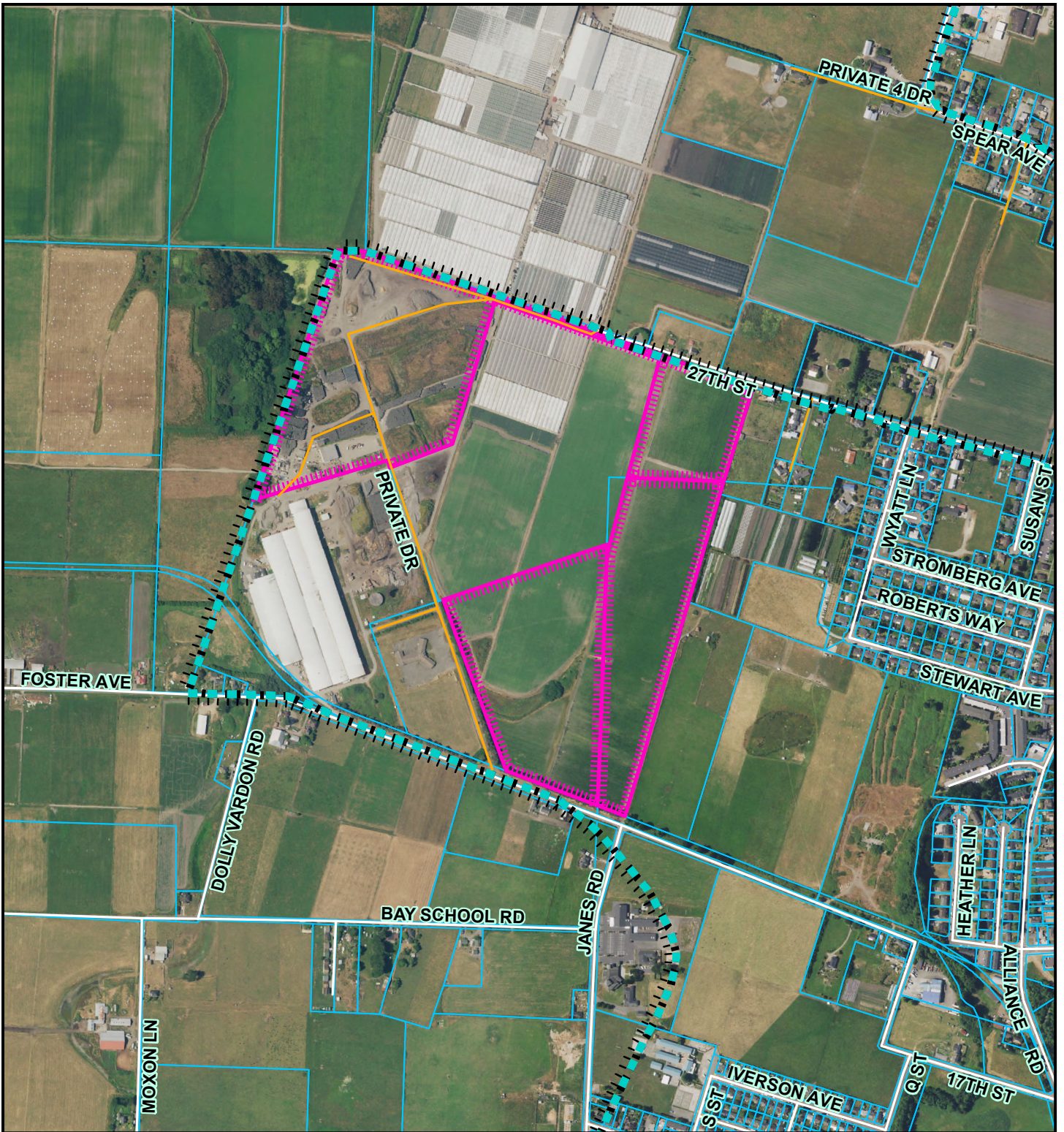
**ARCATA AREA
PLN-2022-17922**

APN: 505-151-012, 506-231-019, -022

T06N R1E S19-20, 29-30 HB&M (Arcata North)



This map is intended for display purposes and should not be used for precise measurement or navigation. Data has not been completely checked for accuracy.



AERIAL MAP

Project Area = 

**PROPOSED RENEWABLE AMERICA LLC
CONDITIONAL USE PERMIT**

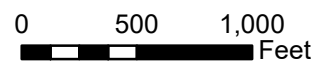
Coastal Zone Boundary 

**ARCATA AREA
PLN-2022-17922**

APN: 505-151-012, 506-231-019, -022

T06N R1E S19-20, 29-30 HB&M (Arcata North)

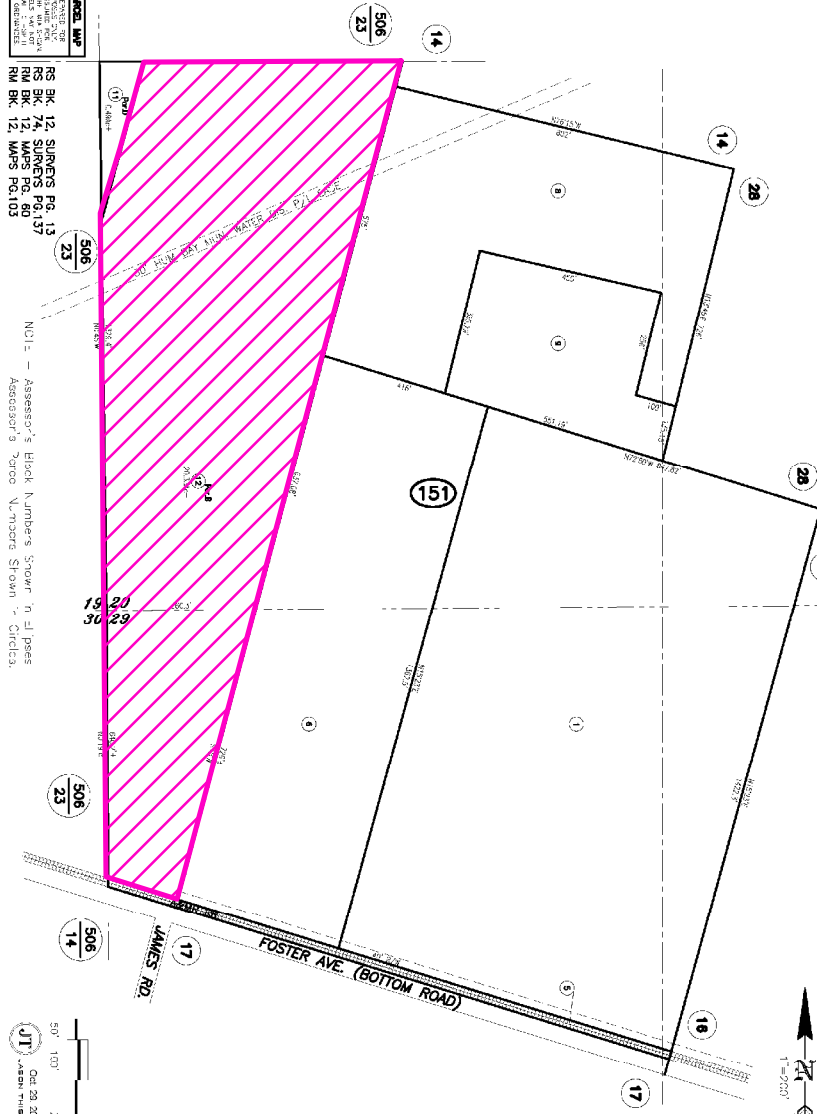
This map is intended for display purposes and should not be used for precise measurement or navigation. Data has not been completely checked for accuracy.





ASSASSOR'S PARCEL MAP
 THIS MAP WAS PREPARED FOR:
 1. COUNTY OF HUMBOLDT, CALIF.
 2. ASSESSOR GENERAL, W. ANDREW
 3. ASSESSOR GENERAL, W. ANDREW
 4. ASSESSOR GENERAL, W. ANDREW
 5. ASSESSOR GENERAL, W. ANDREW
 6. ASSESSOR GENERAL, W. ANDREW
 7. ASSESSOR GENERAL, W. ANDREW
 8. ASSESSOR GENERAL, W. ANDREW
 9. ASSESSOR GENERAL, W. ANDREW
 10. ASSESSOR GENERAL, W. ANDREW
 11. ASSESSOR GENERAL, W. ANDREW
 12. ASSESSOR GENERAL, W. ANDREW
 13. ASSESSOR GENERAL, W. ANDREW
 14. ASSESSOR GENERAL, W. ANDREW
 15. ASSESSOR GENERAL, W. ANDREW
 16. ASSESSOR GENERAL, W. ANDREW
 17. ASSESSOR GENERAL, W. ANDREW
 18. ASSESSOR GENERAL, W. ANDREW
 19. ASSESSOR GENERAL, W. ANDREW
 20. ASSESSOR GENERAL, W. ANDREW
 21. ASSESSOR GENERAL, W. ANDREW
 22. ASSESSOR GENERAL, W. ANDREW
 23. ASSESSOR GENERAL, W. ANDREW
 24. ASSESSOR GENERAL, W. ANDREW
 25. ASSESSOR GENERAL, W. ANDREW
 26. ASSESSOR GENERAL, W. ANDREW
 27. ASSESSOR GENERAL, W. ANDREW
 28. ASSESSOR GENERAL, W. ANDREW
 29. ASSESSOR GENERAL, W. ANDREW
 30. ASSESSOR GENERAL, W. ANDREW
 31. ASSESSOR GENERAL, W. ANDREW
 32. ASSESSOR GENERAL, W. ANDREW
 33. ASSESSOR GENERAL, W. ANDREW
 34. ASSESSOR GENERAL, W. ANDREW
 35. ASSESSOR GENERAL, W. ANDREW
 36. ASSESSOR GENERAL, W. ANDREW
 37. ASSESSOR GENERAL, W. ANDREW
 38. ASSESSOR GENERAL, W. ANDREW
 39. ASSESSOR GENERAL, W. ANDREW
 40. ASSESSOR GENERAL, W. ANDREW
 41. ASSESSOR GENERAL, W. ANDREW
 42. ASSESSOR GENERAL, W. ANDREW
 43. ASSESSOR GENERAL, W. ANDREW
 44. ASSESSOR GENERAL, W. ANDREW
 45. ASSESSOR GENERAL, W. ANDREW
 46. ASSESSOR GENERAL, W. ANDREW
 47. ASSESSOR GENERAL, W. ANDREW
 48. ASSESSOR GENERAL, W. ANDREW
 49. ASSESSOR GENERAL, W. ANDREW
 50. ASSESSOR GENERAL, W. ANDREW
 51. ASSESSOR GENERAL, W. ANDREW
 52. ASSESSOR GENERAL, W. ANDREW
 53. ASSESSOR GENERAL, W. ANDREW
 54. ASSESSOR GENERAL, W. ANDREW
 55. ASSESSOR GENERAL, W. ANDREW
 56. ASSESSOR GENERAL, W. ANDREW
 57. ASSESSOR GENERAL, W. ANDREW
 58. ASSESSOR GENERAL, W. ANDREW
 59. ASSESSOR GENERAL, W. ANDREW
 60. ASSESSOR GENERAL, W. ANDREW
 61. ASSESSOR GENERAL, W. ANDREW
 62. ASSESSOR GENERAL, W. ANDREW
 63. ASSESSOR GENERAL, W. ANDREW
 64. ASSESSOR GENERAL, W. ANDREW
 65. ASSESSOR GENERAL, W. ANDREW
 66. ASSESSOR GENERAL, W. ANDREW
 67. ASSESSOR GENERAL, W. ANDREW
 68. ASSESSOR GENERAL, W. ANDREW
 69. ASSESSOR GENERAL, W. ANDREW
 70. ASSESSOR GENERAL, W. ANDREW
 71. ASSESSOR GENERAL, W. ANDREW
 72. ASSESSOR GENERAL, W. ANDREW
 73. ASSESSOR GENERAL, W. ANDREW
 74. ASSESSOR GENERAL, W. ANDREW
 75. ASSESSOR GENERAL, W. ANDREW
 76. ASSESSOR GENERAL, W. ANDREW
 77. ASSESSOR GENERAL, W. ANDREW
 78. ASSESSOR GENERAL, W. ANDREW
 79. ASSESSOR GENERAL, W. ANDREW
 80. ASSESSOR GENERAL, W. ANDREW
 81. ASSESSOR GENERAL, W. ANDREW
 82. ASSESSOR GENERAL, W. ANDREW
 83. ASSESSOR GENERAL, W. ANDREW
 84. ASSESSOR GENERAL, W. ANDREW
 85. ASSESSOR GENERAL, W. ANDREW
 86. ASSESSOR GENERAL, W. ANDREW
 87. ASSESSOR GENERAL, W. ANDREW
 88. ASSESSOR GENERAL, W. ANDREW
 89. ASSESSOR GENERAL, W. ANDREW
 90. ASSESSOR GENERAL, W. ANDREW
 91. ASSESSOR GENERAL, W. ANDREW
 92. ASSESSOR GENERAL, W. ANDREW
 93. ASSESSOR GENERAL, W. ANDREW
 94. ASSESSOR GENERAL, W. ANDREW
 95. ASSESSOR GENERAL, W. ANDREW
 96. ASSESSOR GENERAL, W. ANDREW
 97. ASSESSOR GENERAL, W. ANDREW
 98. ASSESSOR GENERAL, W. ANDREW
 99. ASSESSOR GENERAL, W. ANDREW
 100. ASSESSOR GENERAL, W. ANDREW

NOTE - Assessor's Block Numbers Show in 1/4 Acres
 Assessor's Parcel Numbers Show in Acres



ASSESSOR PARCEL MAP

**PROPOSED RENEWABLE AMERICA LLC
 CONDITIONAL USE PERMIT**

**ARCATA AREA
 PLN-2022-17922**

APN: 505-151-012, 506-231-019, -022

T06N R1E S19-20, 29-30 HB&M (Arcata North)

Project Area = 

This map is intended for display purposes and should not be used for precise measurement or navigation. Data has not been completely checked for accuracy.

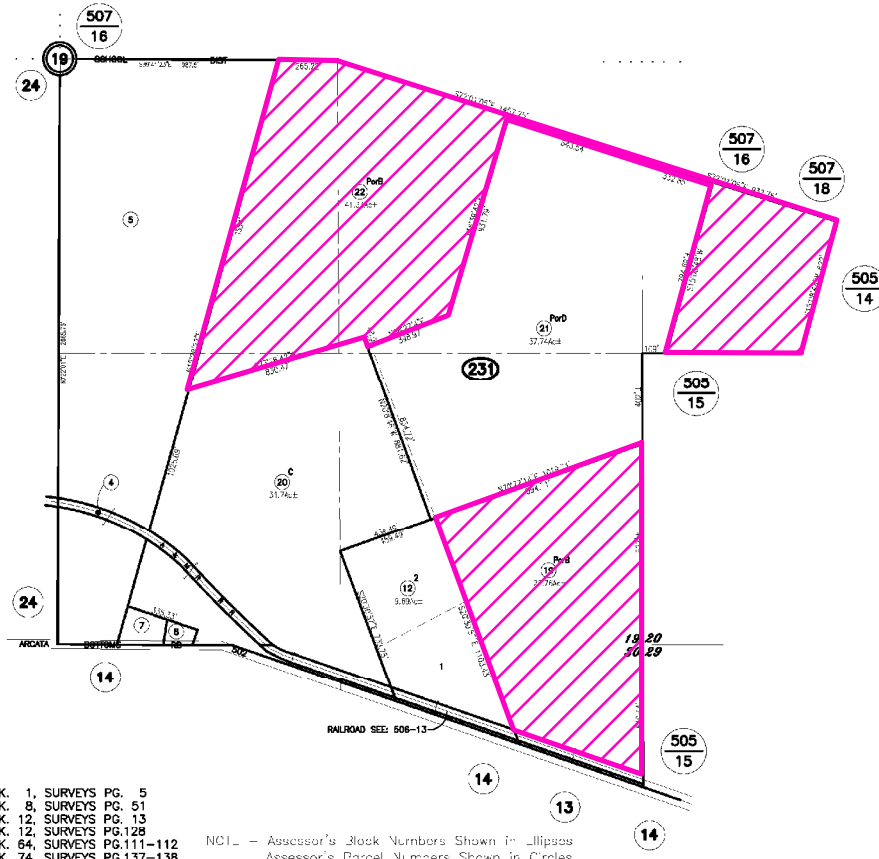


MAP NOT TO SCALE

Assessor's Map Bk.506, Pg.23
County of Humboldt, CA.

PTN SE1/4 SEC 19 T6N, R1E

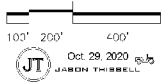
506-23



ASSESSOR'S PARCEL MAP
1. THIS MAP WAS PREPARED FOR:
2. ASSESORIAL PURPOSES ONLY.
3. NO LIABILITY IS ASSUMED FOR THE ACCURACY OF THE DATA SHOWN.
4. ASSESSOR'S PARCELS MAY NOT COMPLY WITH LOCAL LOT SPLIT OR BUILDING SITE ORDINANCES.

RS BK. 1, SURVEYS PG. 5
RS BK. 8, SURVEYS PG. 51
RS BK. 12, SURVEYS PG. 13
RS BK. 12, SURVEYS PG. 128
RS BK. 64, SURVEYS PG. 111-112
RS BK. 74, SURVEYS PG. 137-138

NCI - Assessor's Block Numbers Shown in Ellipses
Assessor's Parcel Numbers Shown in Circles.



ASSESSOR PARCEL MAP

**PROPOSED RENEWABLE AMERICA LLC
CONDITIONAL USE PERMIT**

**ARCATA AREA
PLN-2022-17922**

APN: 505-151-012, 506-231-019, -022

T06N R1E S19-20, 29-30 HB&M (Arcata North)

Project Area = 

This map is intended for display purposes and should not be used for precise measurement or navigation. Data has not been completely checked for accuracy.

MAP NOT TO SCALE

