

**LOWER KLAMATH
PLANNING WATERSHED**

**REDWOOD CREEK
PLANNING WATERSHED**

**LOWER TRINITY
PLANNING WATERSHED**

Planning Commissioner Map

Planning Watersheds

- Planning Watershed
- Pending Projects
- Approved Projects
- CE HEIR Notices

Highways and Roads

Functional Class

- Principal Arterials
- Minor Arterials
- Major Collectors
- Minor Collectors
- Local Roads
- Private Roads

Lower Klamath Planning Watershed

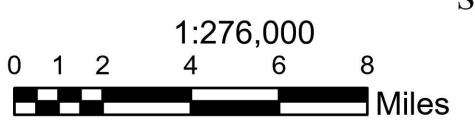
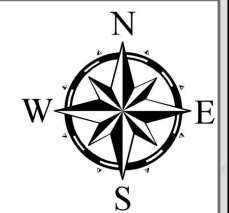
Status	Total	New	Ratio	Existing	Ratio
Approved Projects:	25	5	20%	20	80%
Pending Projects:	37	13	35%	24	65%
C.E. HEIR Cases:	34				

Source:
Humboldt County Planning and Building Department, March 2023.

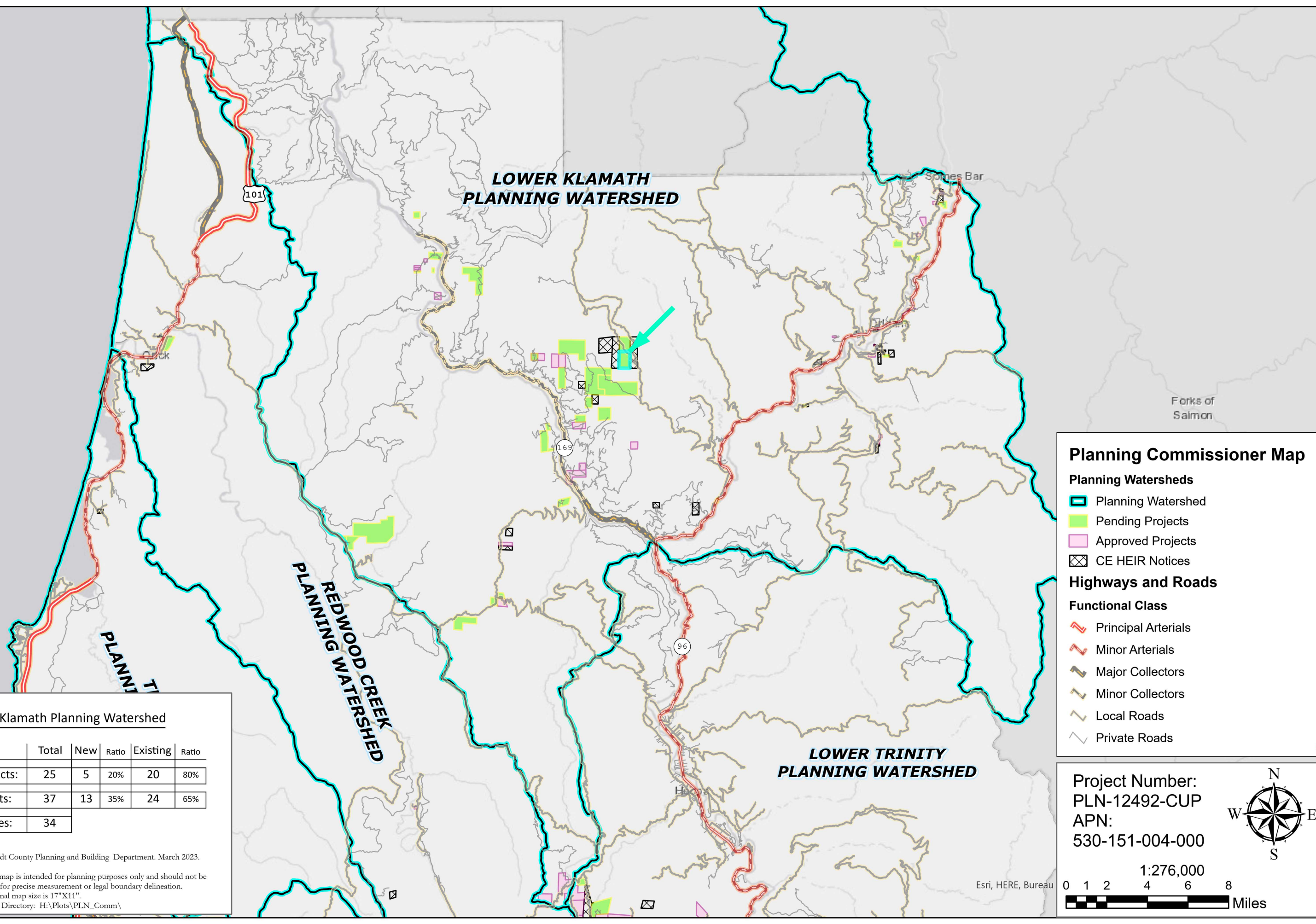


This map is intended for planning purposes only and should not be used for precise measurement or legal boundary delineation.
Original map size is 17"X11".
Plots Directory: H:\Plots\PLN_Comm\

Project Number:
PLN-11544-CUP
APN:
530-151-005-000



Esri, HERE, Bureau



**LOWER KLAMATH
PLANNING WATERSHED**

**REDWOOD CREEK
PLANNING WATERSHED**

**LOWER TRINITY
PLANNING WATERSHED**

Planning Commissioner Map

Planning Watersheds

- Planning Watershed
- Pending Projects
- Approved Projects
- CE HEIR Notices

Highways and Roads

- Functional Class**
- Principal Arterials
 - Minor Arterials
 - Major Collectors
 - Minor Collectors
 - Local Roads
 - Private Roads

Lower Klamath Planning Watershed

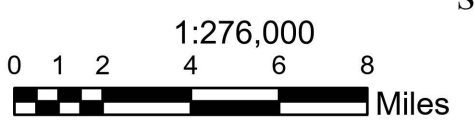
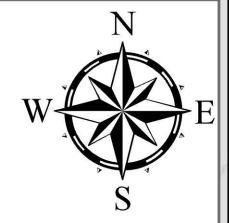
Status	Total	New	Ratio	Existing	Ratio
Approved Projects:	25	5	20%	20	80%
Pending Projects:	37	13	35%	24	65%
C.E. HEIR Cases:	34				

Source:
Humboldt County Planning and Building Department, March 2023.



This map is intended for planning purposes only and should not be used for precise measurement or legal boundary delineation.
Original map size is 17"X11".
Plots Directory: H:\Plots\PLN_Comm\

Project Number:
PLN-12492-CUP
APN:
530-151-004-000



Esri, HERE, Bureau