

Attachment 9

Public Works Diagrams and Photos

Table of Contents

page

2. Diagram showing Fisher Road (north and south of State Hwy 36)
3. Diagram showing Fisher Road near the Van Duzen River
4. Photo showing Fisher Road where it intersects the Van Duzen River
5. Photo showing Fisher Road where it intersects the Van Duzen River (close up)
6. Photo illustration showing Fisher Road being reconstructed to provide access to the Van Duzen River (cut slope option)
7. Photo illustration showing Fisher Road being reconstructed to provide access to the Van Duzen River (cut slope option)

Legend

-  County Maintained Fisher Road North of Hwy 36
-  Non-County Maintained Fisher Road North of Hwy 36
-  County Maintained Fisher Road South of Hwy 36
-  Non-County Maintained Fisher Road South of Hwy 36
-  Portion of County Maintained Fisher Road proposed for vacation
-  North Western Pacific R.R. Carlotta Branch / Great Redwood Trail

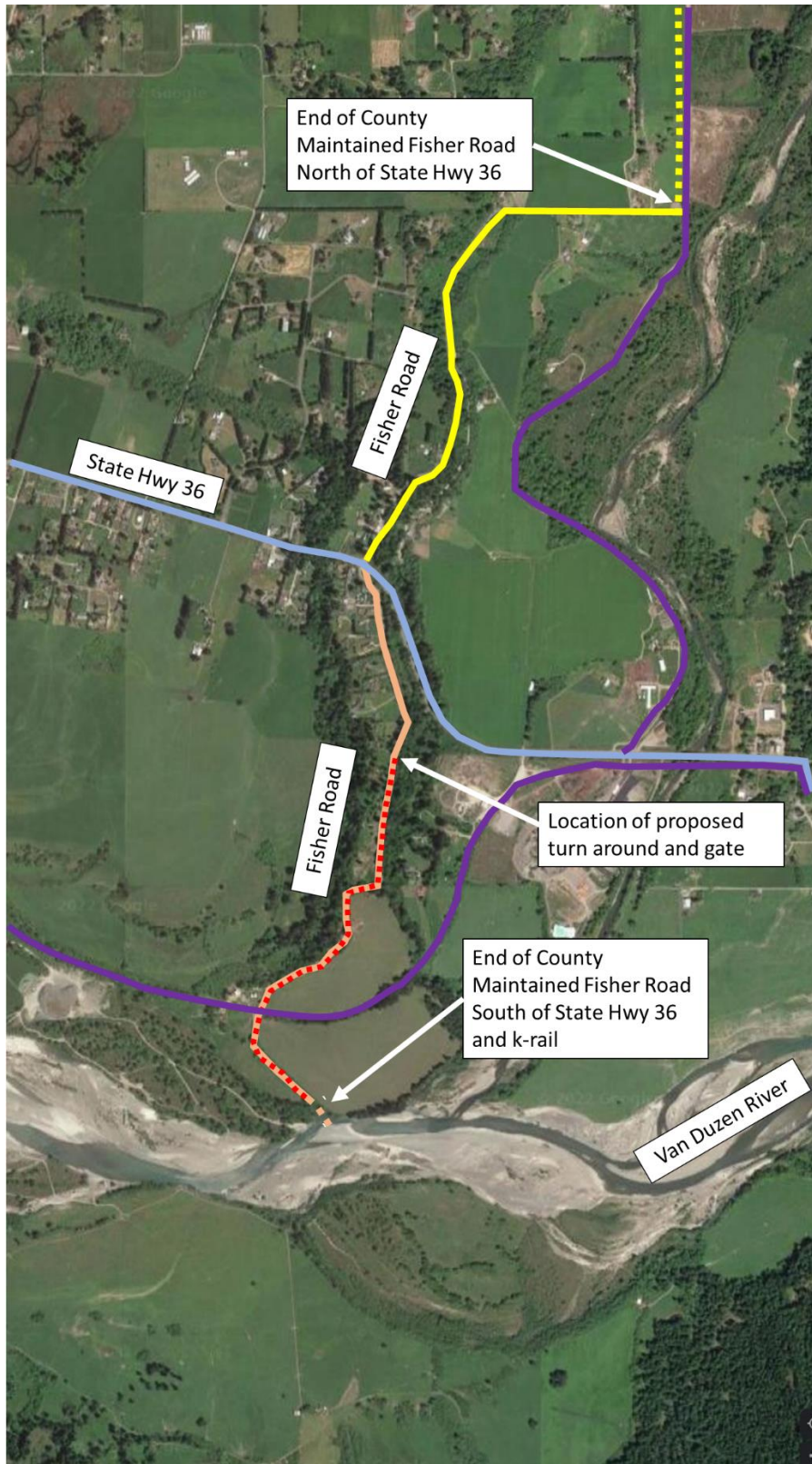


Diagram showing Fisher Road (north and south of State Hwy 36). (See legend on page 1.)

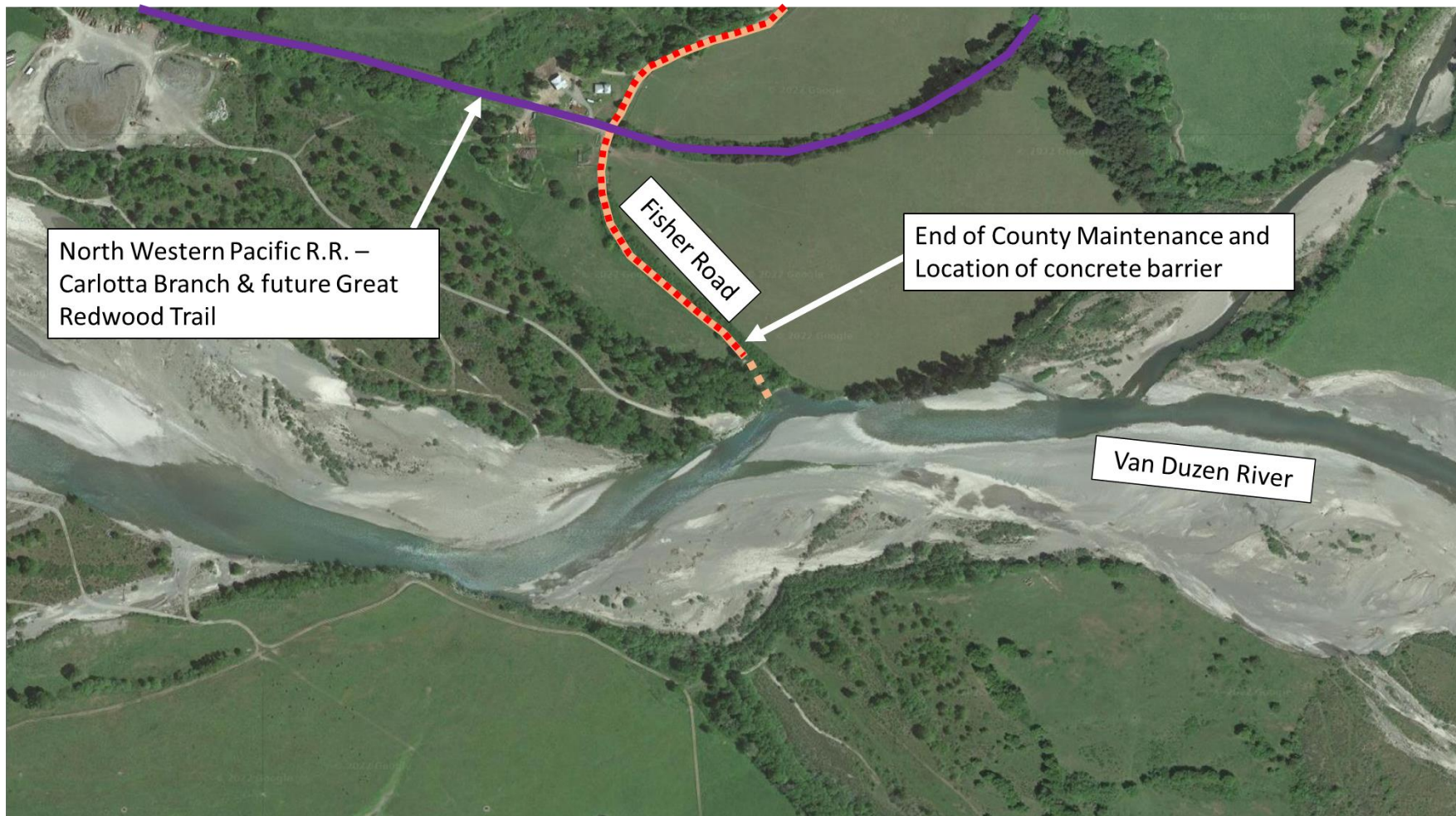


Diagram showing Fisher Road near the Van Duzen River. (See legend on page 1.)



Photo showing Fisher Road where it intersects the Van Duzen River.

Note that this picture was taken after a rain event and the river is up.

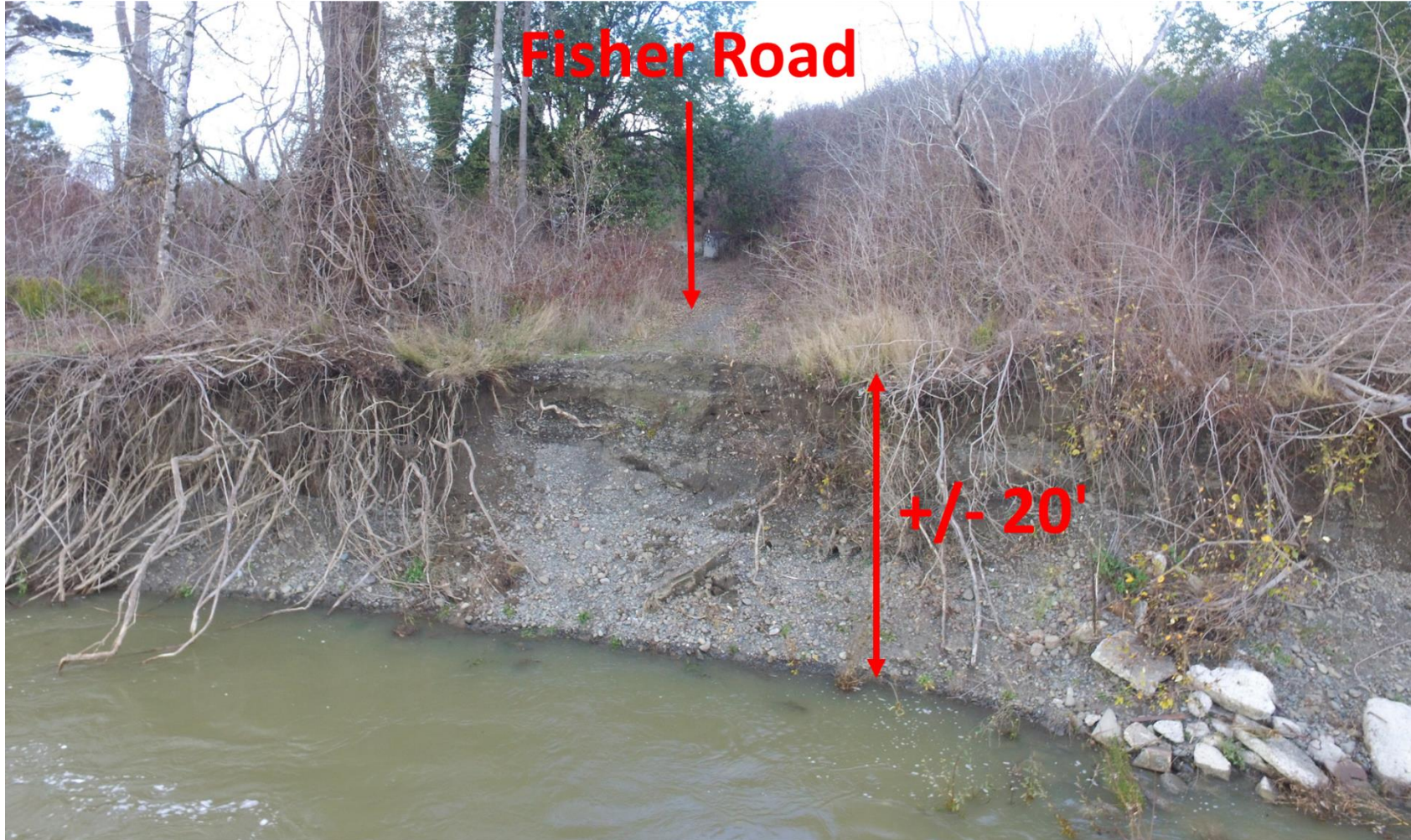


Photo showing Fisher Road where it intersects the Van Duzen River (close up)

Note that this picture was taken after a rain event and the river is up.

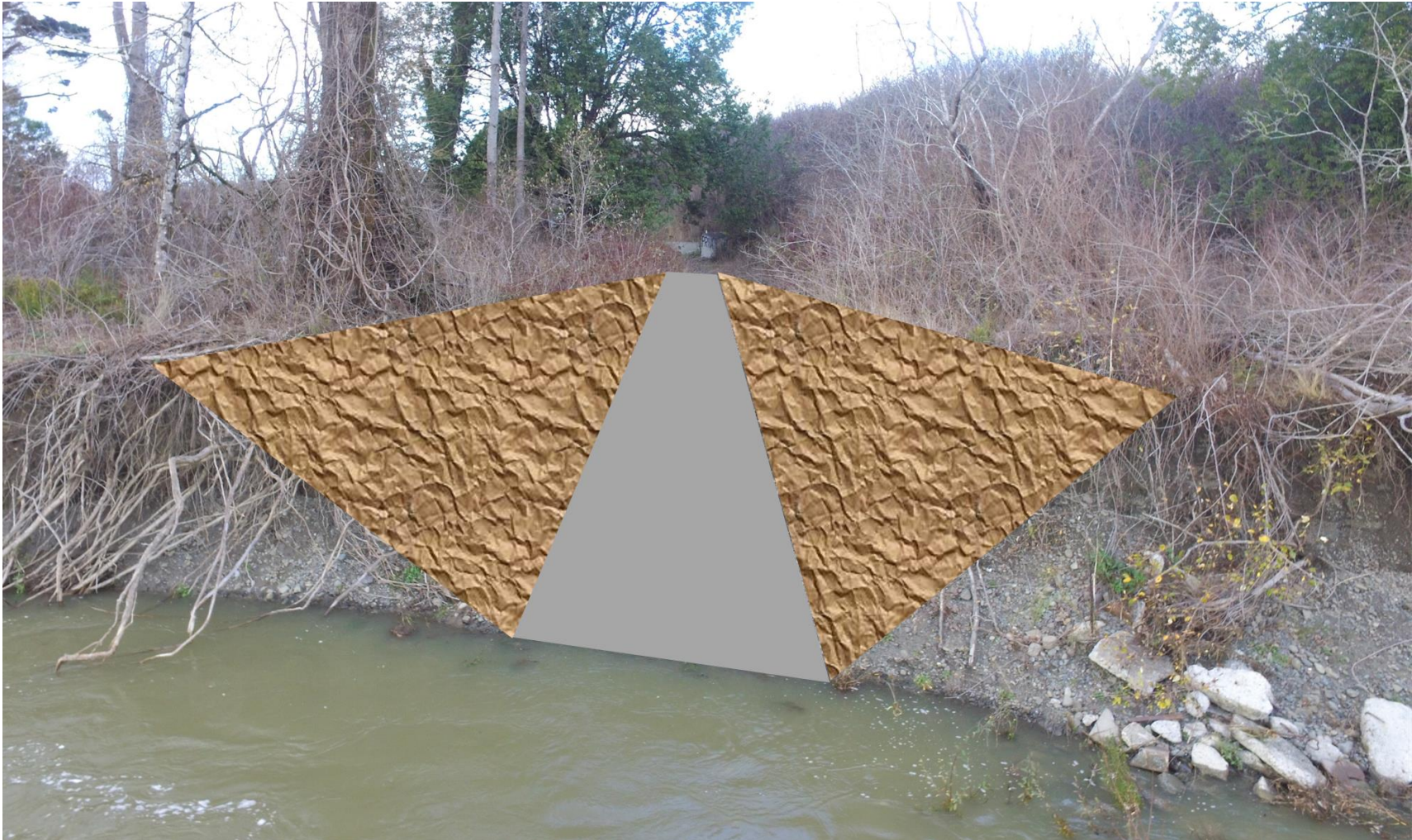


Photo illustration showing Fisher Road being reconstructed to provide access to the Van Duzen River (cut slope option)

Note that this picture was taken after a rain event and the river is up.

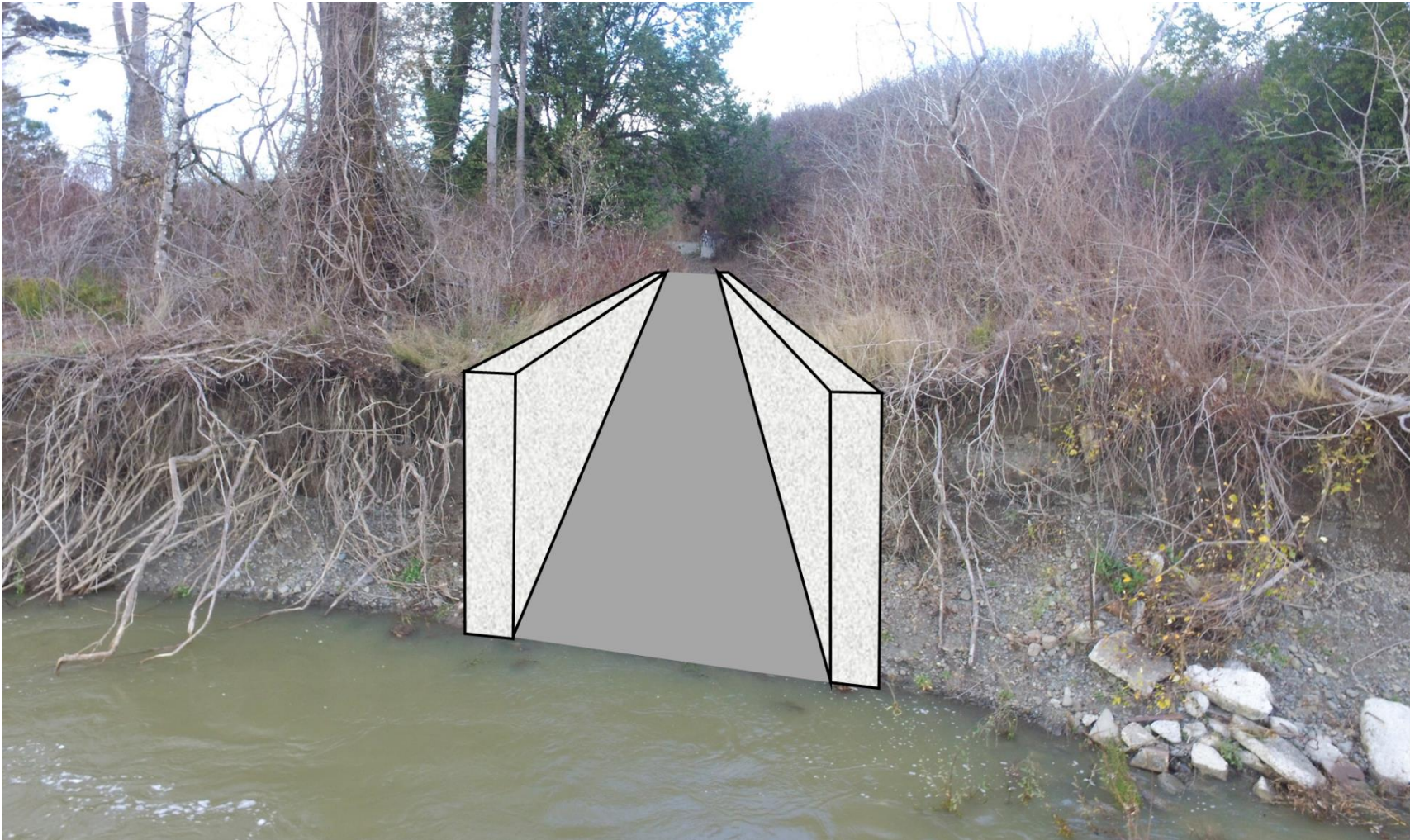


Photo illustration showing Fisher Road being reconstructed to provide access to the Van Duzen River (cut slope option)

Note that this picture was taken after a rain event and the river is up.