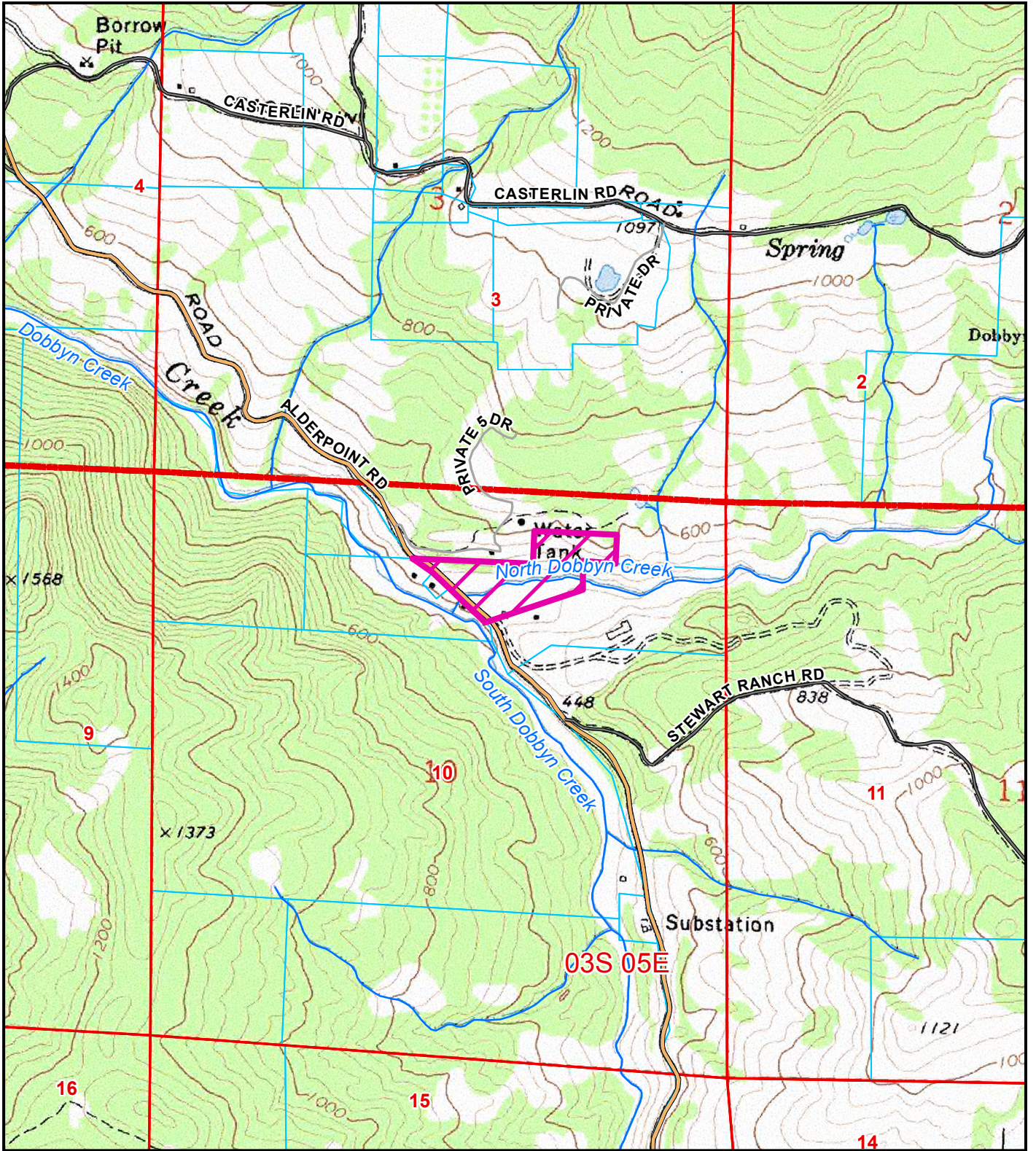


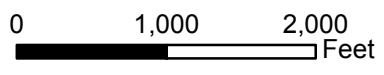
**ATTACHMENT 2**

**Location Maps**

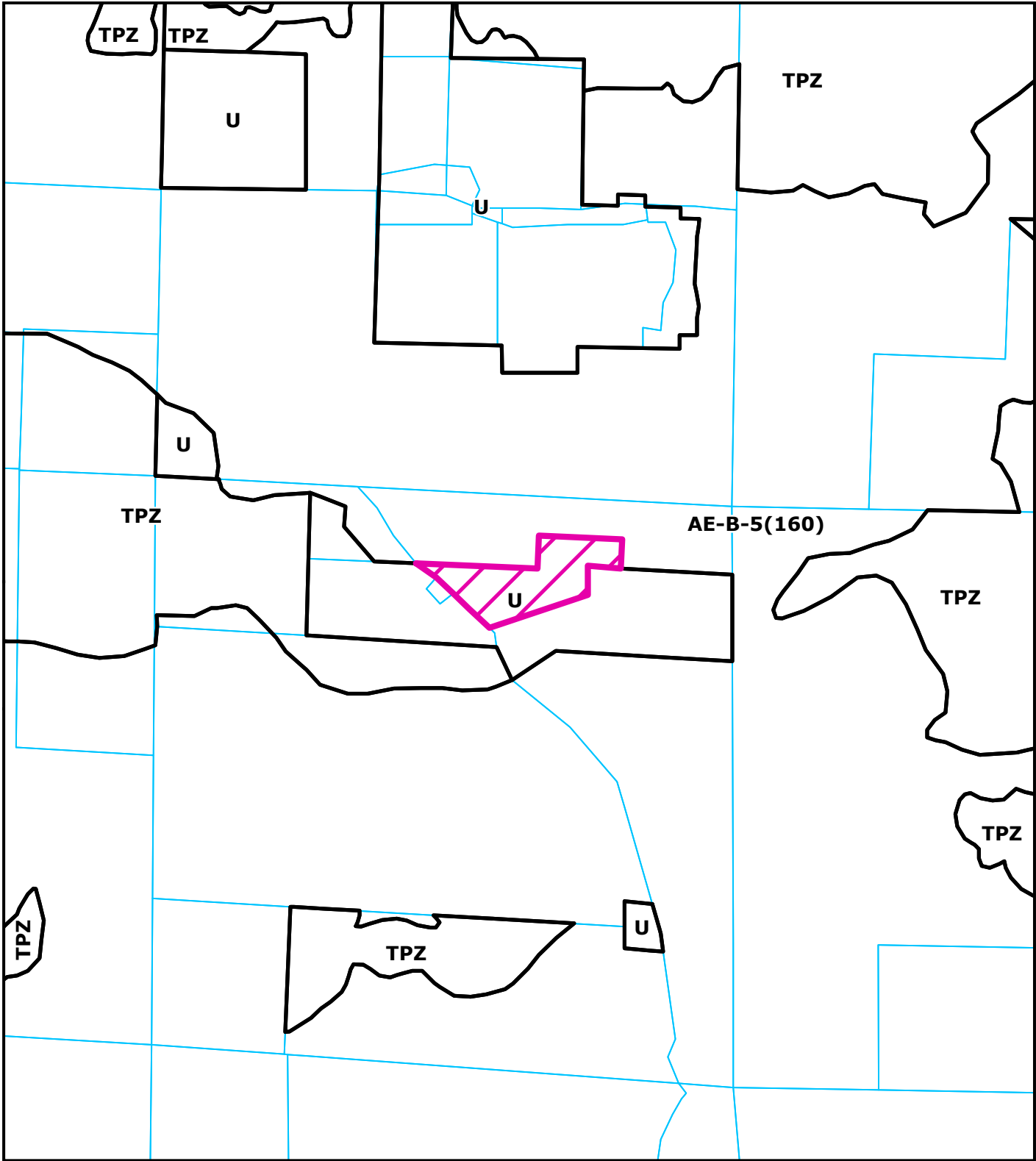


**TOPO MAP**  
**PROPOSED DOBBYN CREEK PHARMS, LLC**  
**ALDERPOINT AREA**  
**CUP-16-446**  
**APN: 216-317-006-000**  
**T03S R05E S10 HB&M (ALDERPOINT)**

Project Area =

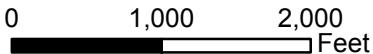


This map is intended for display purposes and should not be used for precise measurement or navigation. Data has not been completely checked for accuracy.

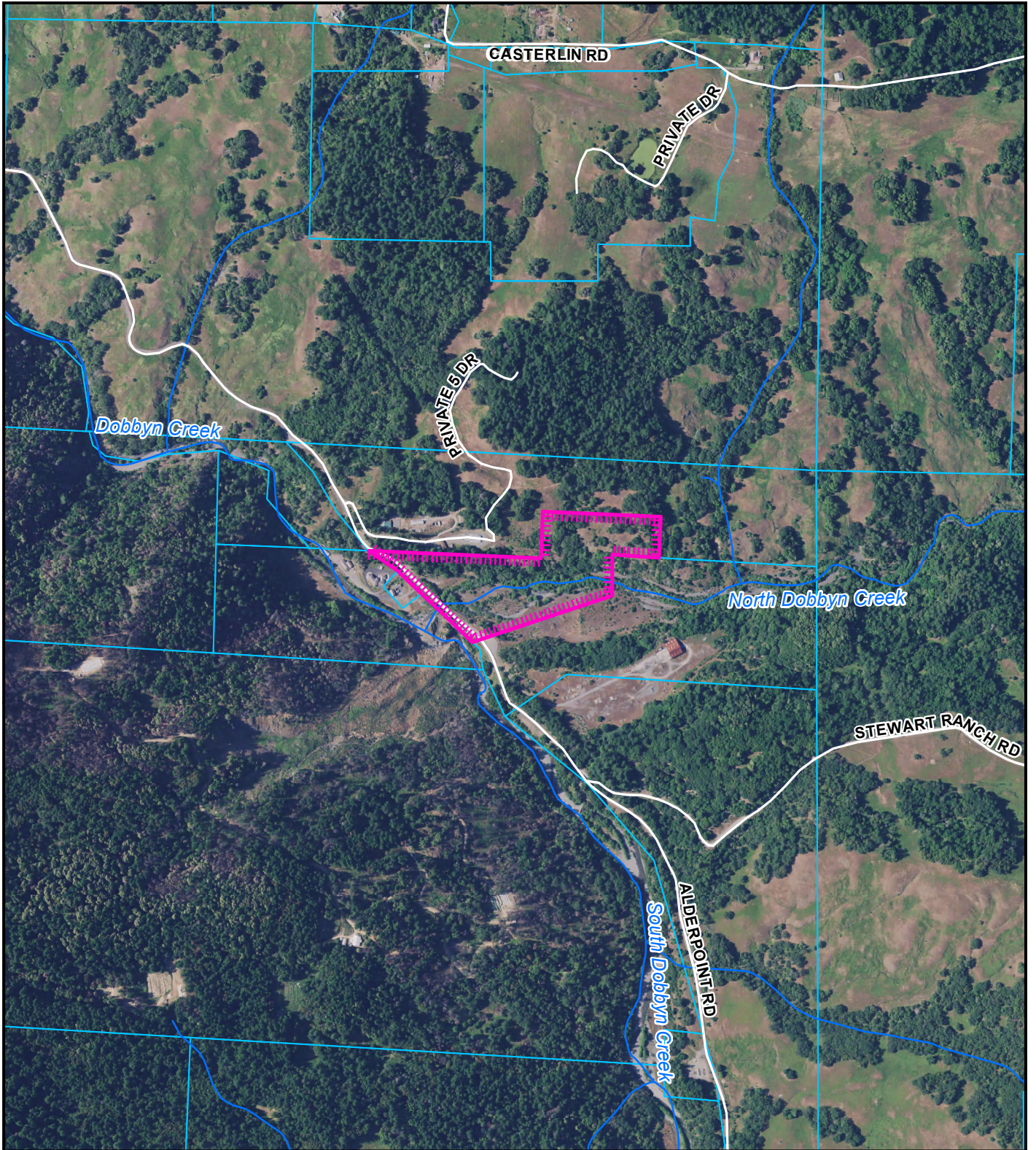


**ZONING MAP**  
**PROPOSED DOBBYN CREEK PHARMS, LLC**  
**ALDERPOINT AREA**  
**CUP-16-446**  
**APN: 216-317-006-000**  
**T03S R05E S10 HB&M (ALDERPOINT)**

Project Area = 

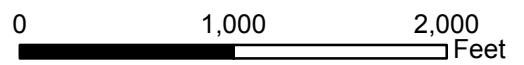


This map is intended for display purposes and should not be used for precise measurement or navigation. Data has not been completely checked for accuracy.



**AERIAL MAP**  
**PROPOSED DOBBYN CREEK PHARMS, LLC**  
**ALDERPOINT AREA**  
**CUP-16-446**  
**APN: 216-317-006-000**  
**T03S R05E S10 HB&M (ALDERPOINT)**

Project Area = 



This map is intended for display purposes and should not be used for precise measurement or navigation. Data has not been completely checked for accuracy.