

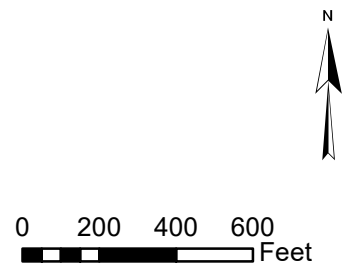
**LOCATION MAP**

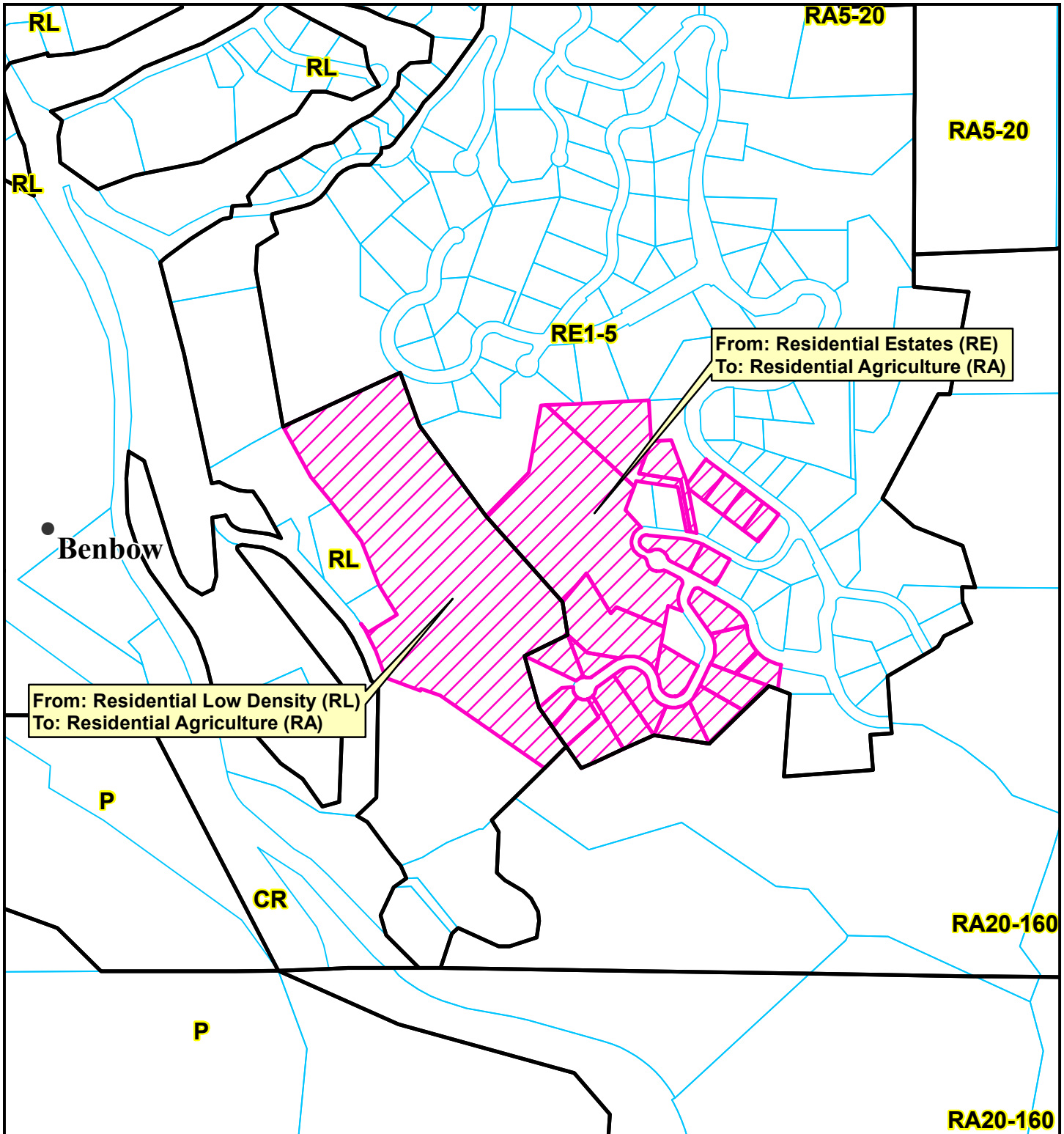
**PROPOSED BENBOW PROPERTIES INC  
GENERAL PLAN AMENDMENT &  
ZONING RECLASSIFICATION  
BENBOW AREA  
PLN-2021-17209**

**APN: 033-101-011 et al  
T04S R04E S31 HB&M (Garberville)**

Project Area = 

This map is intended for display purposes and should not be used for precise measurement or navigation. Data has not been completely checked for accuracy.





**LAND USE MAP DETAIL**

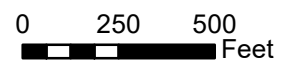
**PROPOSED ROCK & SKY LLC  
GENERAL PLAN AMENDMENT &  
ZONE RECLASSIFICATION**

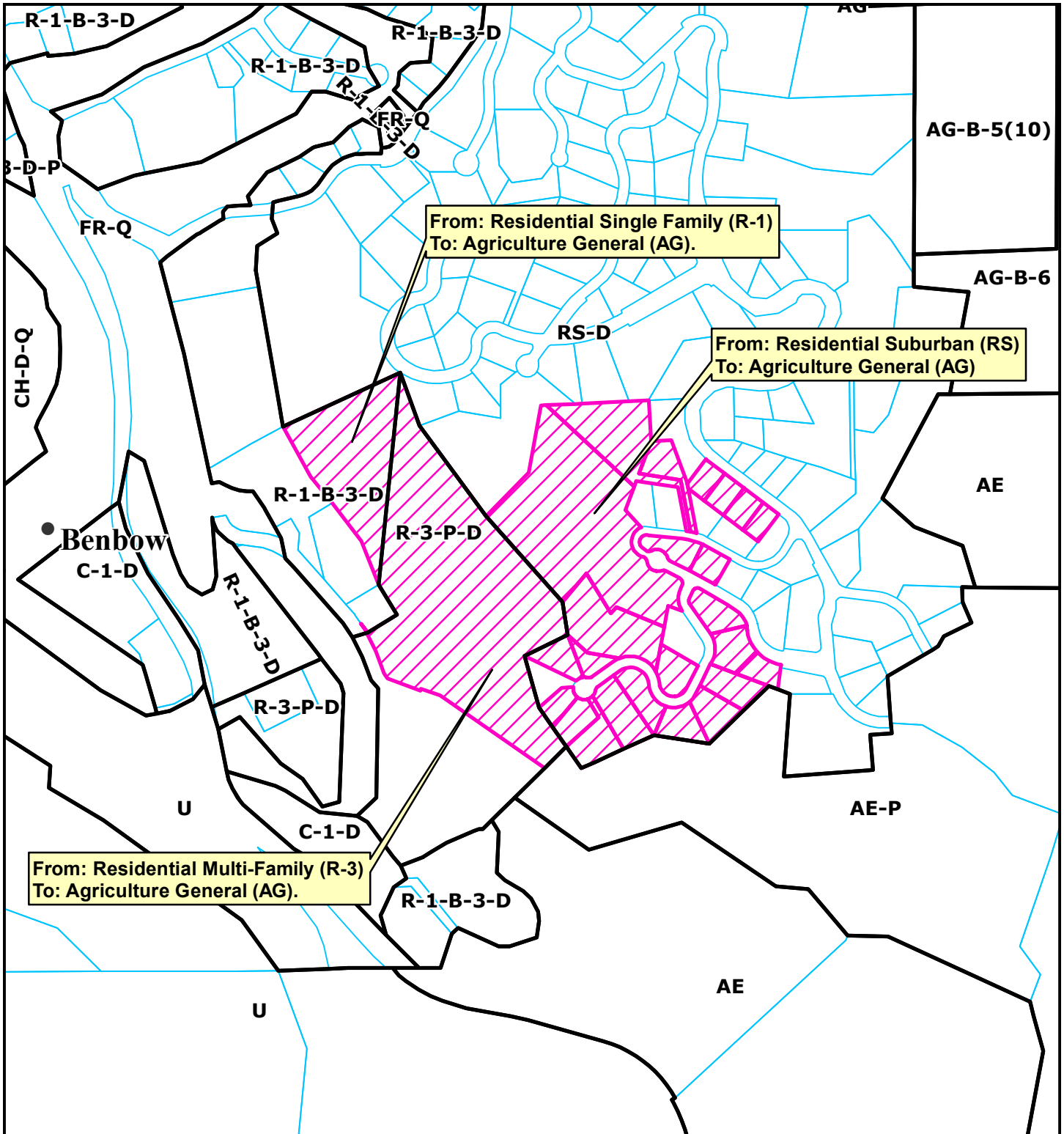
**BENBOW AREA  
PLN-2021-17209  
APN: 033-101-011**

**T04S R04E S31 HB&M (Garberville)**

Project Area = 

This map is intended for display purposes and should not be used for precise measurement or navigation. Data has not been completely checked for accuracy.





**ZONING MAP DETAIL**

**PROPOSED ROCK & SKY LLC  
 GENERAL PLAN AMENDMENT &  
 ZONE RECLASSIFICATION  
 BENBOW AREA  
 PLN-2021-17209  
 APN: 033-101-011  
 T04S R04E S31 HB&M (Garberville)**

Project Area = 

This map is intended for display purposes and should not be used for precise measurement or navigation. Data has not been completely checked for accuracy.

