

ATTACHMENT 5

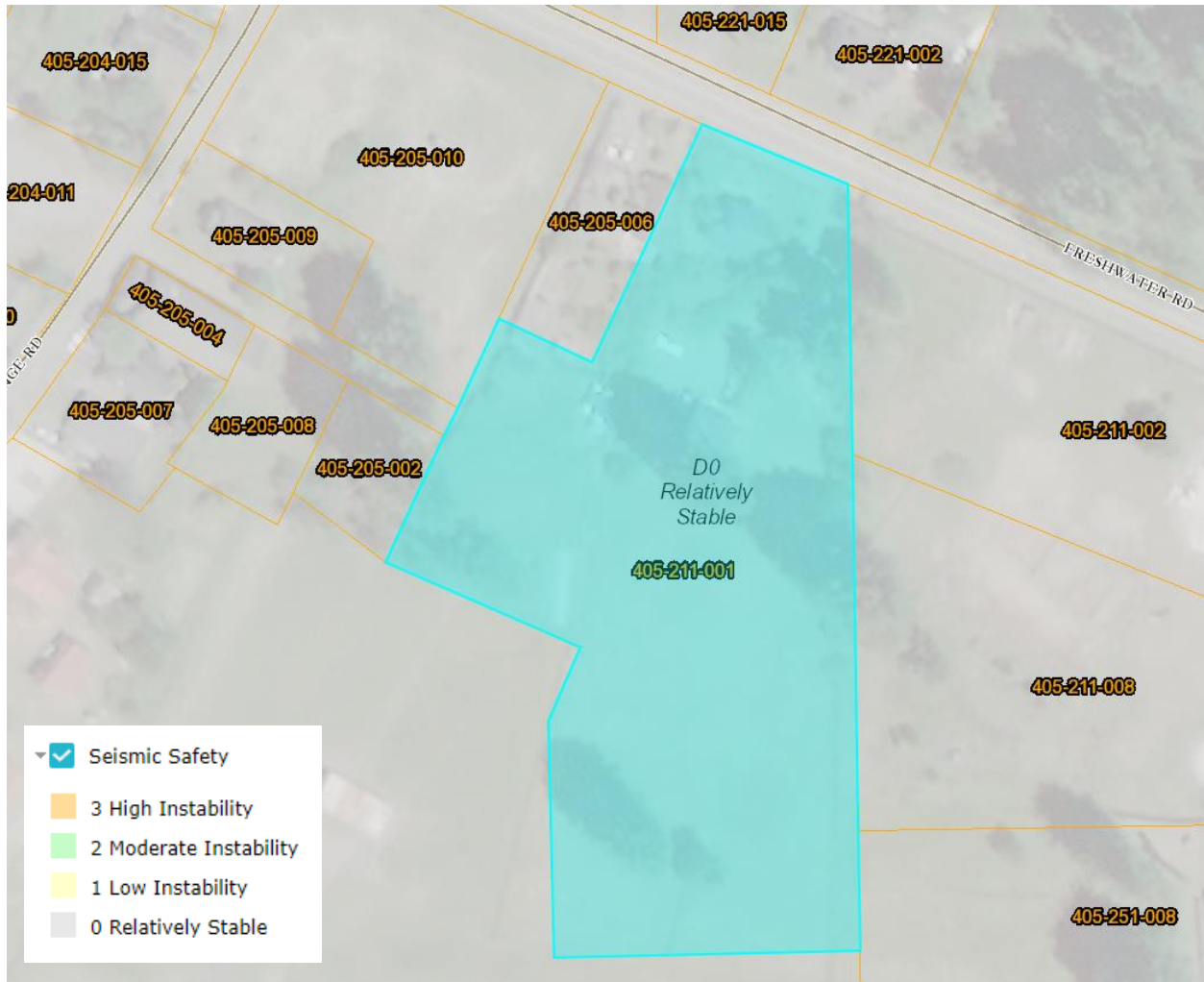
SLOPES, STABILITY, SEISMIC SAFETY, AND HOUSING INVENTORY FIGURES

FIGURE 1 -SLOPE MAP



Note: The entire 2.30 acres of the Project Area contain slopes under 15%

FIGURE 2 - SLOPE INSTABILITY



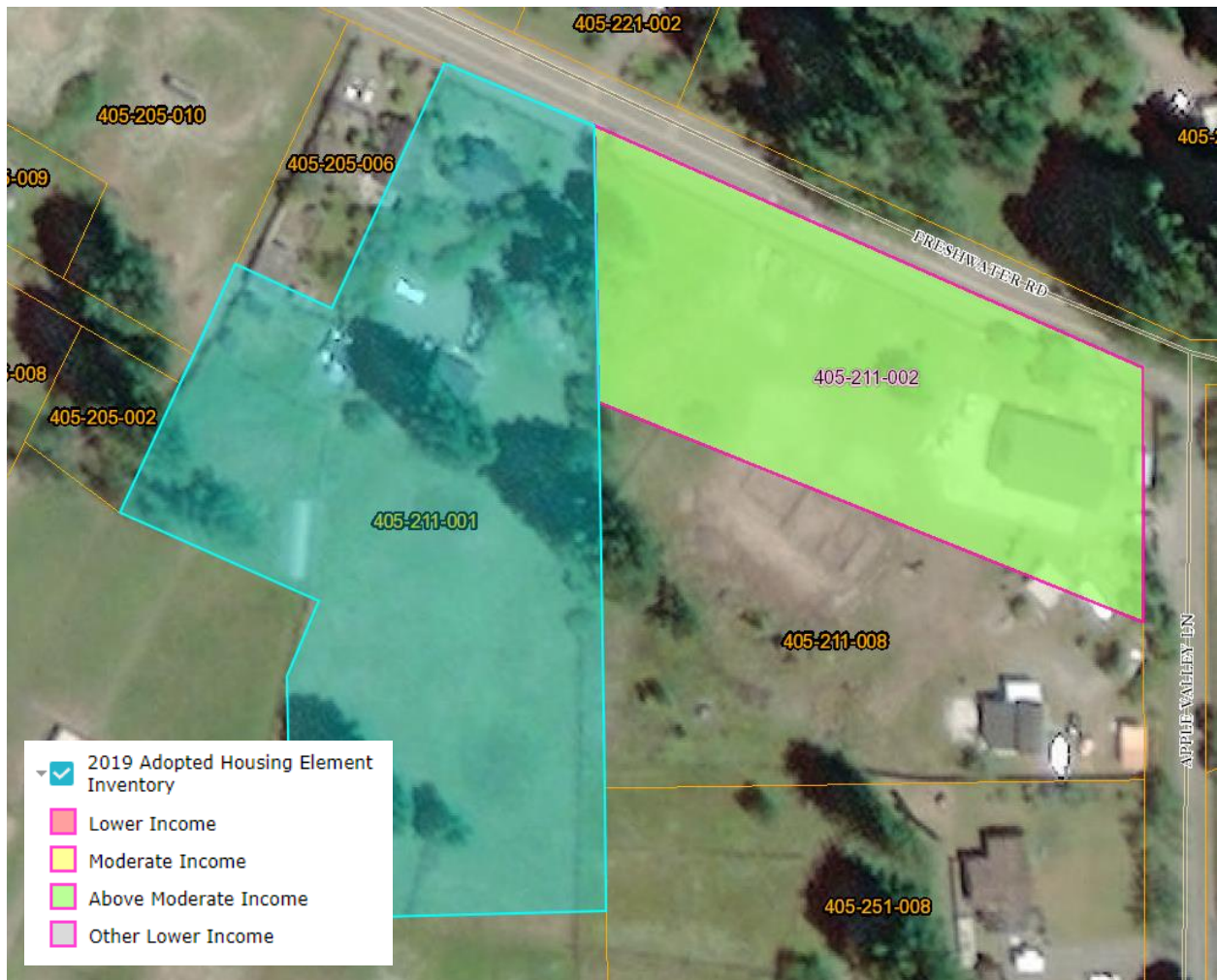
Note: Project area rating is entirely Relatively Stable (0).

FIGURE 3 - HISTORIC LANDSLIDES



Note: The Project Area does not contain historic landslides

FIGURE 4 - 2019 RHNA HOUSING INVENTORY AND LAND USE DESIGNATIONS



Note: No RHNA Land Inventory sites are located within Project Area