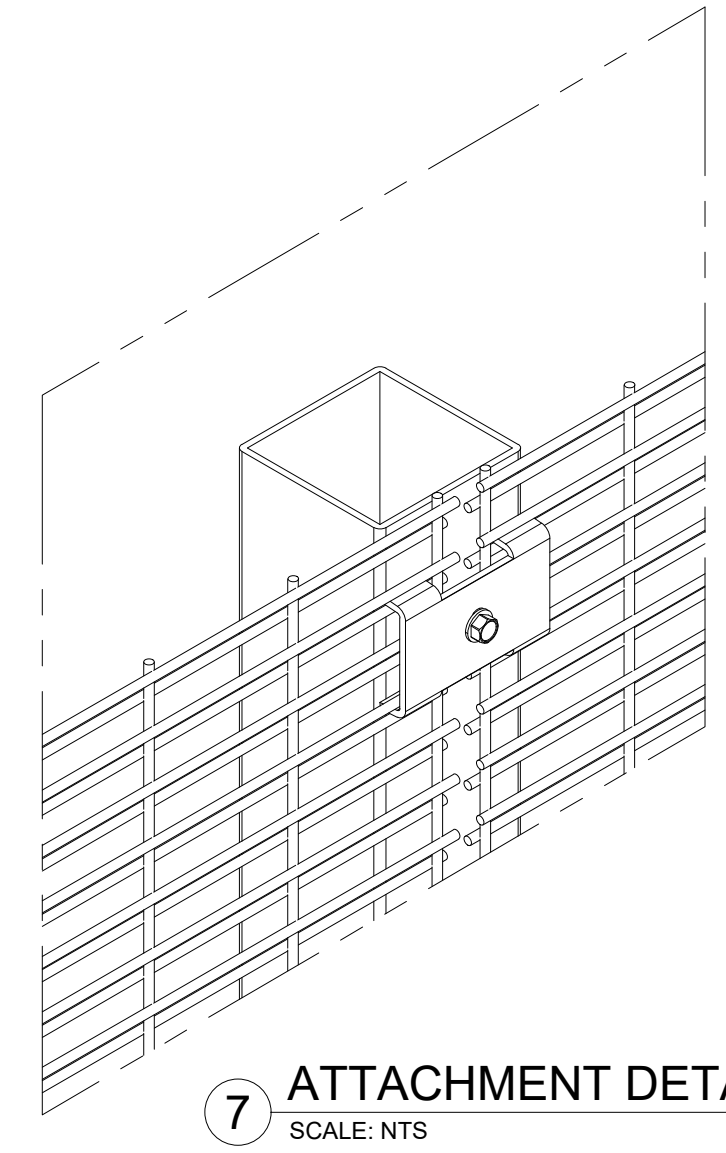
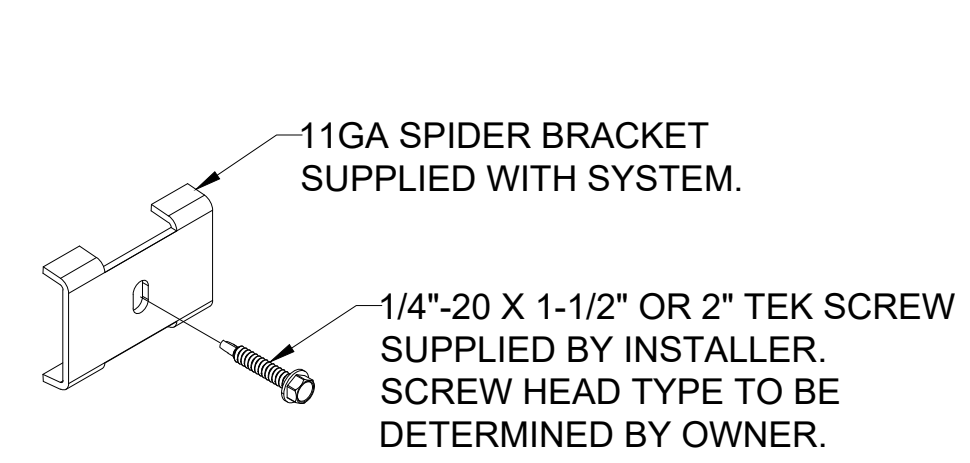


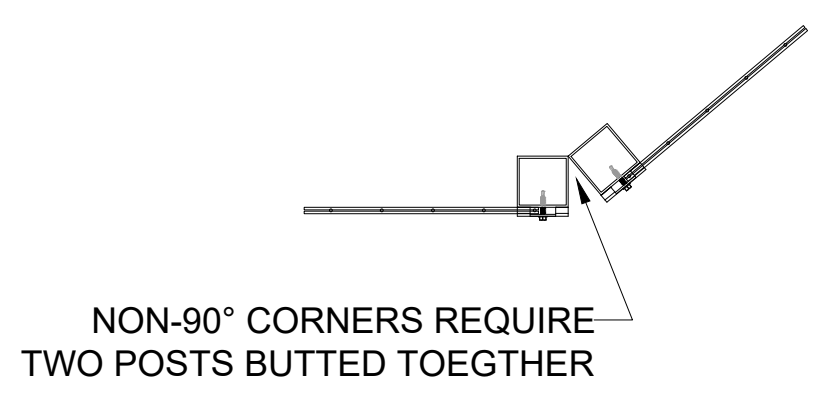
NOTICE: ALL INTELLECTUAL PROPERTY (INCLUDING, WITHOUT LIMITATION, ALL COPYRIGHT AND DESIGN RIGHTS) AND PROPRIETARY RIGHTS TO ALL INFORMATION AND/OR TECHNICAL DATA CONTAINED ON THIS DRAWING BELONGS TO GUARDIAN USA, LLC. THE DRAWING MUST BE MAINTAINED BY YOU, THE RECIPIENT, IN STRICT CONFIDENCE. THIS DRAWING IS NOT TO BE DISCLOSED OR REPRODUCED, IN WHOLE OR IN PART, DIRECTLY OR INDIRECTLY, IN ANY MANNER WHATSOEVER, WITHOUT THE EXPRESS WRITTEN CONSENT OF GUARDIAN USA, LLC AND IT SHALL BE RETURNED UPON REQUEST.



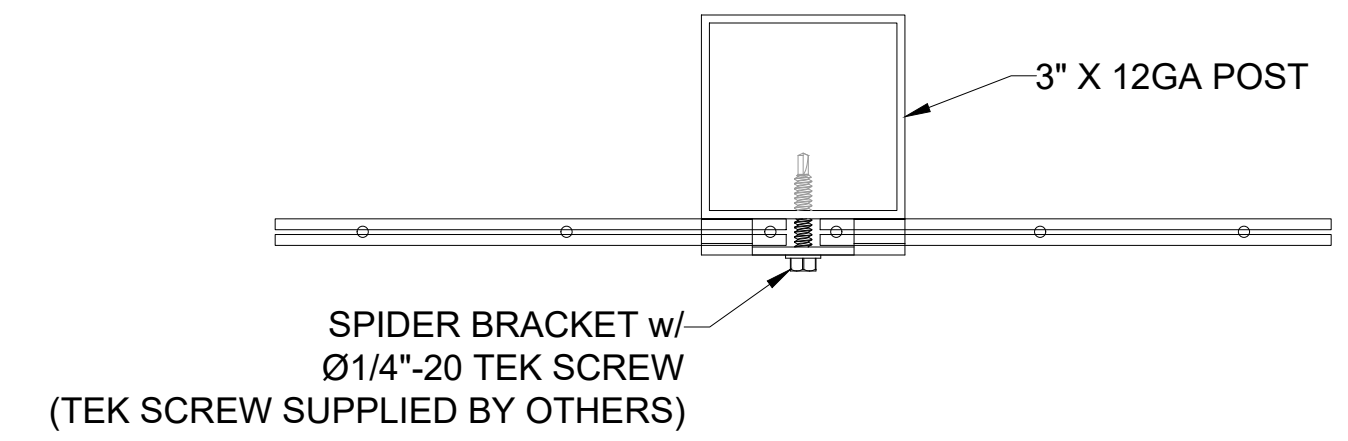
7 ATTACHMENT DETAIL (ISO)  
SCALE: NTS



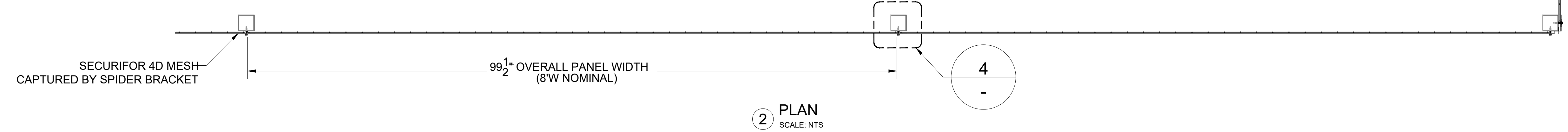
5 SPIDER BRACKET DETAIL  
SCALE: NTS



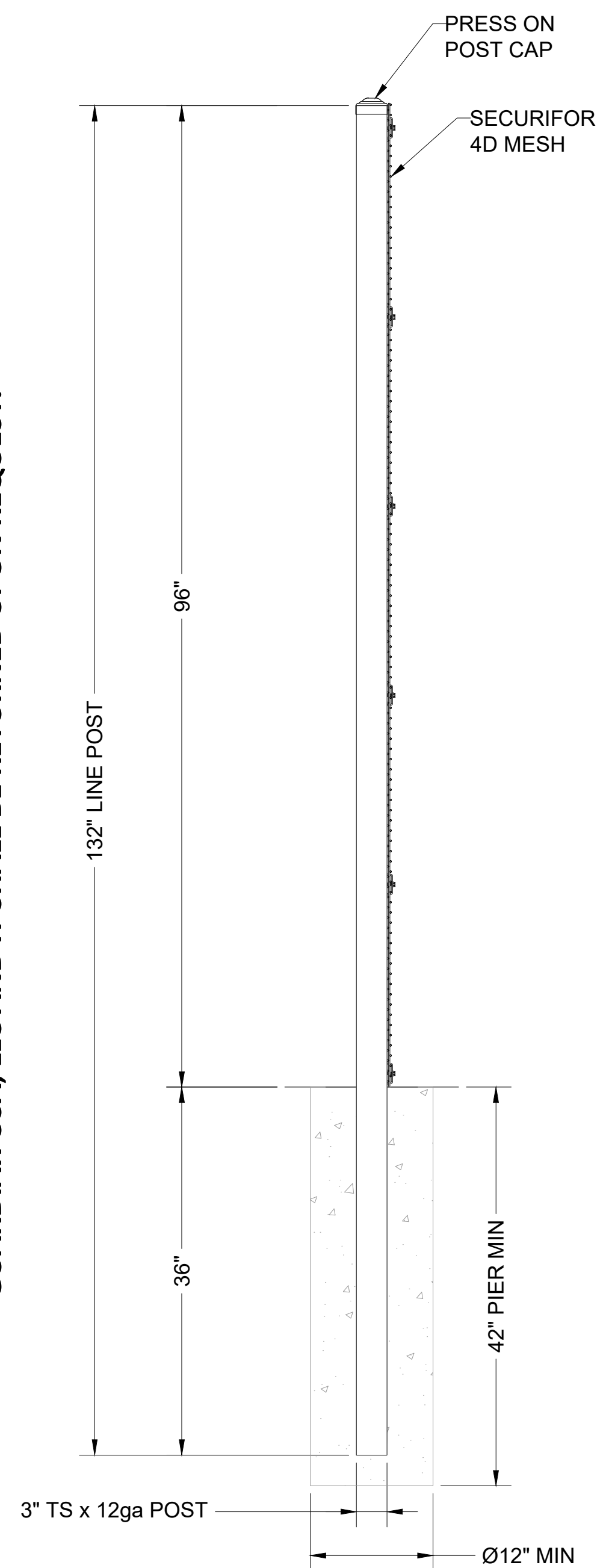
5 NON-90 CORNER DETAIL  
SCALE: NTS



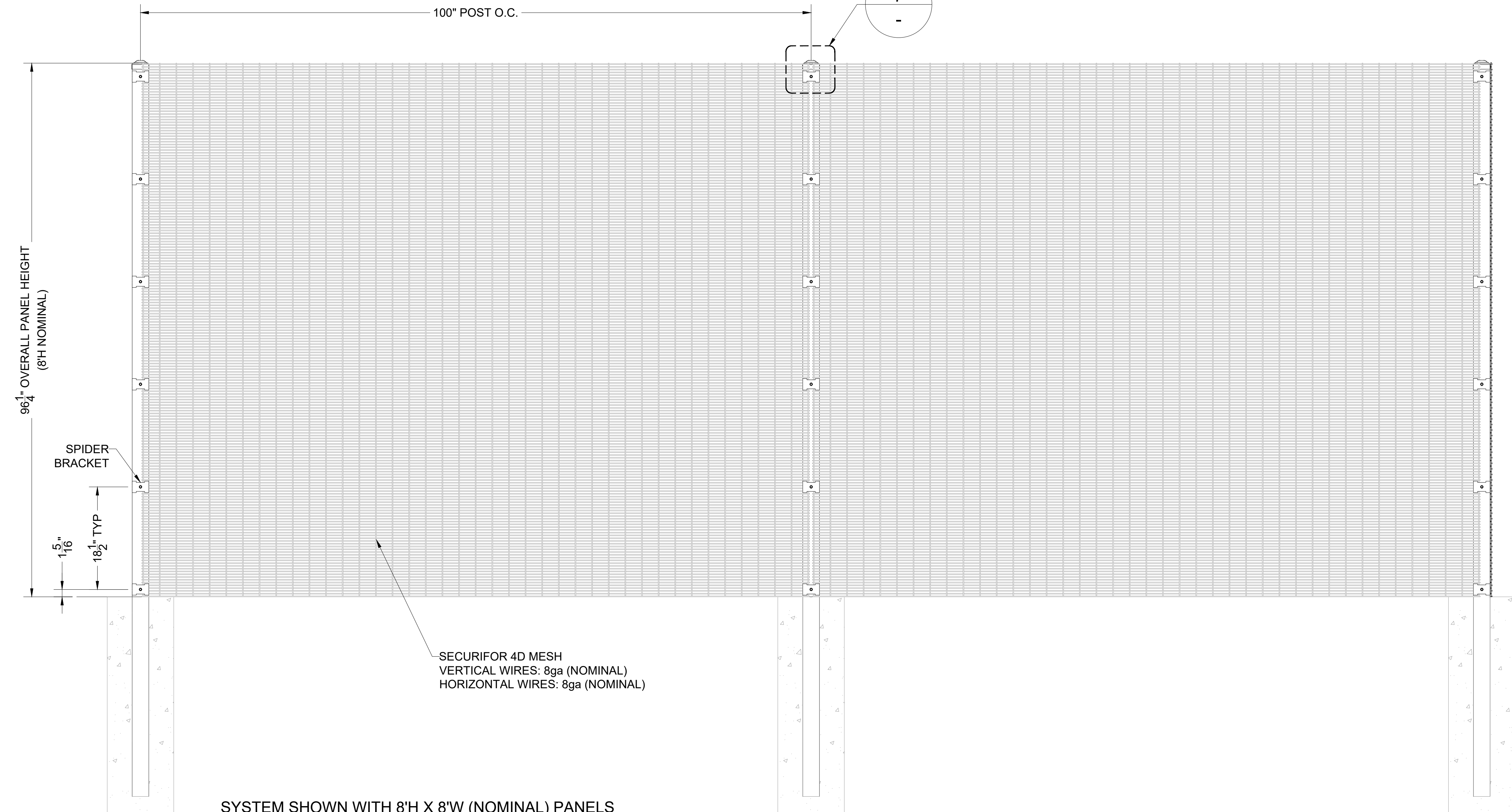
4 DETAIL AT POST  
SCALE: NTS



2 PLAN  
SCALE: NTS



3 SECTION  
SCALE: NTS



1 SECURIFOR 4D TYPICAL ELEVATION  
SCALE: NTS

SYSTEM SHOWN WITH 8' X 8' (NOMINAL) PANELS

TYPICAL PIER SIZES SHOWN. FINAL PIERS TO BE DETERMINED BASED UPON POST SIZE, FENCE HEIGHT, WIND LOAD, AND SOIL CONDITIONS.

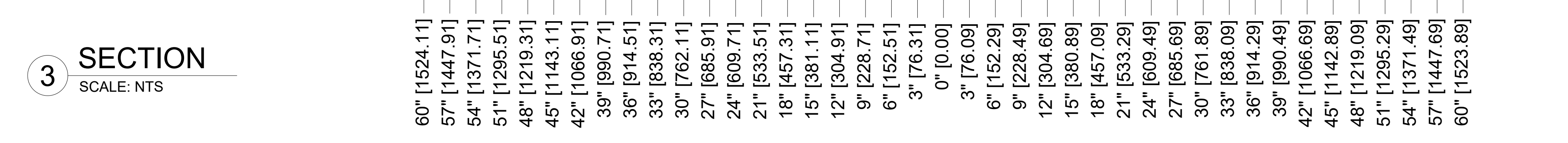
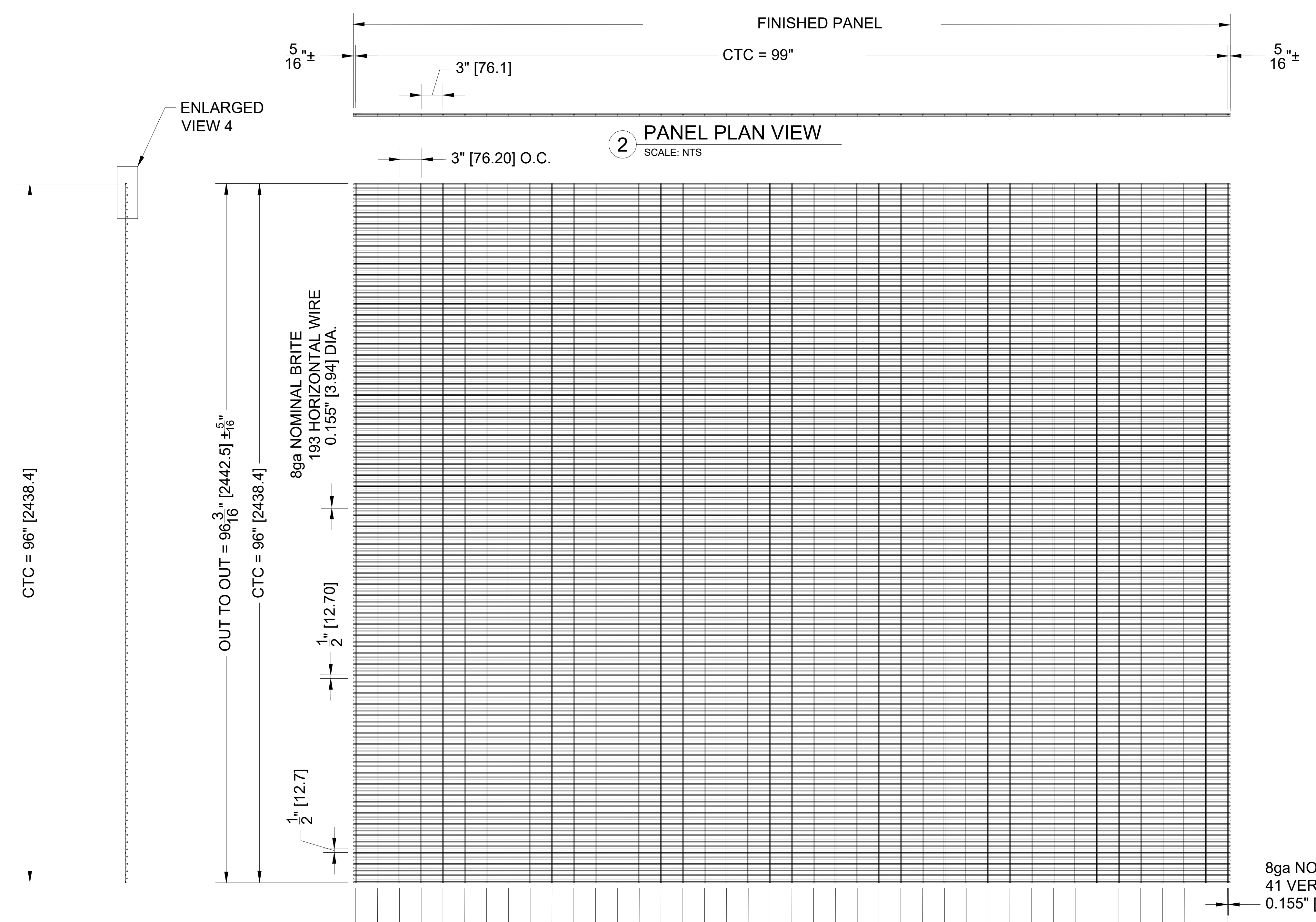
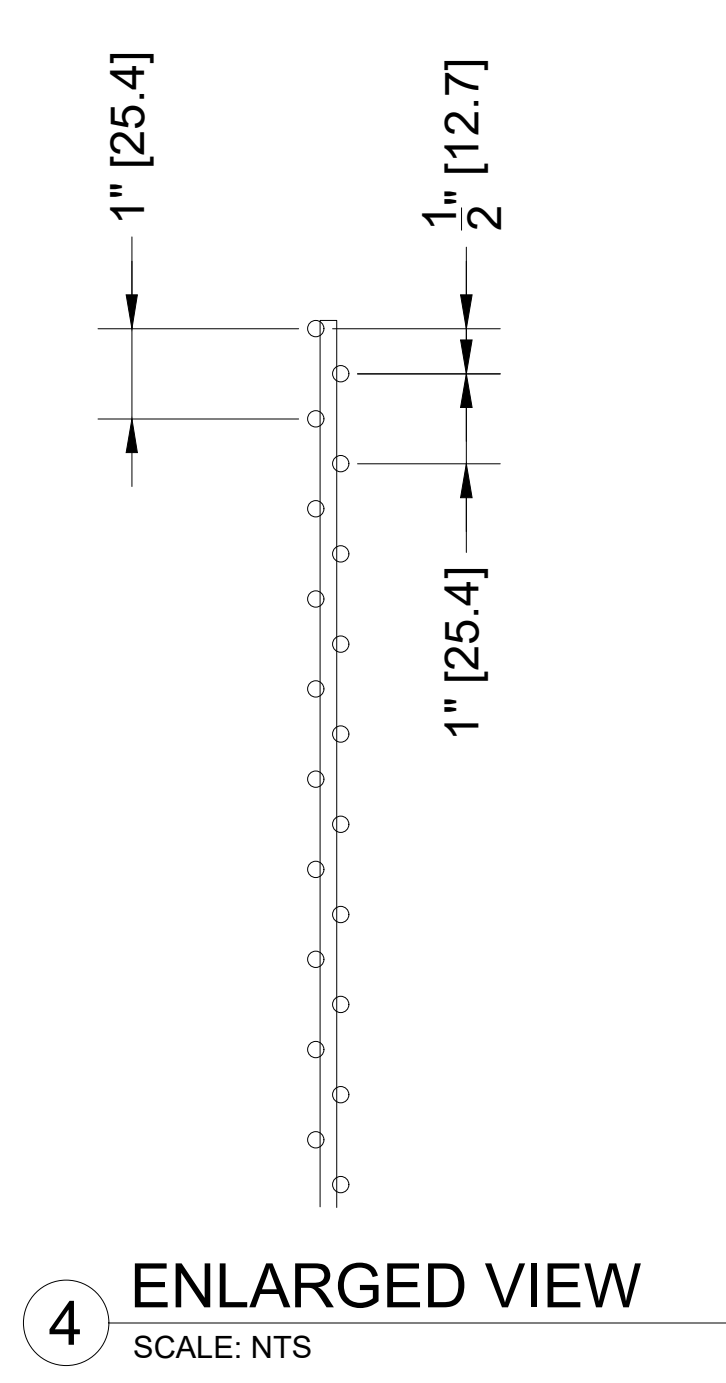
**BETAFENCE**  
a PR/ESTID IAD brand  
Main: 972-878-7000 Fax: 214-887-4652  
3309 S. I-45 ENNIS, TX 75119  
www.Guardian.com

REV	DATE	DESCRIPTION	BY

<b>SECURIFOR 4D 8'H X 10'W TYPICAL ELEVATION</b>		FINISH	
PROJECT	TYPICAL	HDC OR POWDERCOATED	
CUSTOMER	TYPICAL	MATERIAL SPECIFICATIONS	
QUOTE#		A36 STEEL- ALL PLATE, ANGLE & CHANNEL	
DATE		U.S.S. - ALL GALV. FULL STRENGTH	
DRAFTER		U.S.N. - ALL PRE-GALV. MAT'L. A653 W/MIN.	
REVIEWER		ZINC COATINGS WEIGHT 0.80/0.2FT	
TJR			

SHEET NO.  
**SEC4D8X10**

DISCLAIMER: DRAWINGS MAY NOT INCLUDE FULL PRODUCT DETAILS AND CAN CHANGE WITHOUT NOTICE.



- 60" [1524.11]
- 57" [1447.91]
- 54" [1371.71]
- 51" [1295.51]
- 48" [1219.31]
- 45" [1143.11]
- 42" [1066.91]
- 39" [990.71]
- 36" [914.51]
- 33" [838.31]
- 30" [762.11]
- 27" [685.91]
- 24" [609.71]
- 21" [533.51]
- 18" [457.31]
- 15" [381.11]
- 12" [304.91]
- 9" [228.71]
- 6" [152.51]
- 3" [76.31]
- 0" [0.00]
- 3" [76.09]
- 6" [152.29]
- 9" [228.49]
- 12" [304.69]
- 15" [380.89]
- 18" [457.09]
- 21" [533.29]
- 24" [609.49]
- 27" [685.69]
- 30" [761.89]
- 33" [838.09]
- 36" [914.29]
- 39" [990.49]
- 42" [1066.69]
- 45" [1142.89]
- 48" [1219.09]
- 51" [1295.29]
- 54" [1371.49]
- 57" [1447.69]
- 60" [1523.89]

**1 8ga.NOMINAL BRIT WIRE  
96"Wx99"H 4D 1-1 PANEL**  
SCALE: NTS

**PANEL SPECS & TOLERANCES**

- Tolerance of manufacture of cut lengths:**
- Straightness of cross wires fed to welding +2,0 mm max to straight line
- Tolerance of manufacture of Securifor® (358) mesh types:**
- Tolerance of line wire pitch ± 2,0 mm
  - Tolerance of cross wire pitch ± 1,0mm
  - Line wire overhang front 4 ± 1 mm = **max. 5 mm**<sup>6</sup>
  - Line wire overhang back 2m panel 3 ± 2 mm = **max. 5,5 mm**<sup>6</sup>
  - Line wire overhang back 3m panel 3 ± 2,5 mm = **max. 5,5 mm**<sup>6</sup>
  - Line wire overhang back 4m panel 5 ± 4 mm = **max. 9 mm**<sup>6</sup>
  - Line wire overhang back 5m panel 6 ± 5 mm = **max. 11 mm**<sup>6</sup>
  - Line wire overhang back 6m panel 6 ± 6 mm = **max. 11 mm**<sup>6</sup>
  - Securifor® 4D and 2D line wire overhang front Max 20mm<sup>6</sup>
  - Trimmed overhang of cross wires 0 ± 0,1 mm<sup>8</sup>
  - Non-trimmed overhang of cross wires 0 + 2,0 mm
  - No sharp cutting burrs: See sketch below
- Wire straightness line wires (bow) Max 4 mm**<sup>1</sup>
- Cumulative spacing over 1200mm 1 mm**<sup>1</sup>
- Contraction of the first crosswire 1.5mm/m of mesh width**<sup>2</sup>
- Overall panel length (outer wires) ± 3,0 mm**
- Squareness of panel (delta diagonals) Max. 6mm (up to 4m long panel)**<sup>7</sup>
- Weld shear strength 75 %**<sup>5</sup>
- Flatness: Max lift at any point on flat surface 40 mm**<sup>3</sup>
- Deflection of panel when hanging Max 100mm**<sup>4</sup>
- Tolerance of wire diameter + 0.06mm**

SAP Part Numbers		
Procedure	Color	SAP Number
Weld	BR	4047186
HDG	GA	4047187

REVISION	DATE	DESCRIPTION	BY	APPROVED

**MATERIAL SPECIFICATIONS:**  
TUBE STEEL - AS500 Grade B  
PLATE, ANGLE & CHANNEL - A36 Steel  
ALL WIRE - COMMERCIAL GALV.  
TYP. U.N.O.  
**FINISH:**  
SEE CHART

**TOLERANCES**

FRACTIONS	± 1/16"
.XX	.032
.XXX	.016
ANGLE	.6°

UNLESS OTHERWISE NOTED ON DRAWING

**DESCRIPTION:**  
PAN SECURIFOR® 4D 1/1  
96SX121L GA

**PART NUMBER:**  
SEE CHART

**DRAWING NUMBER:**  
SEC33P201001

**SCALE:** N/A  
**DRAWN:** TJR  
**CHECKED:** XX  
**DATE:** 08-NOV-21

**Guardiar**  
Main: 972-878-7000 Fax: 214-887-4552  
3309 S. 145 ENNIS, TX 75119  
www.Guardiar.com

**NOTICE:** GUARDIAR CLAIMS PROPRIETARY RIGHTS TO ALL INFORMATION AND/OR TECHNICAL DATA CONTAINED ON THIS DRAWING WHICH IS TO BE MAINTAINED BY YOU IN STRICT CONFIDENCE. THIS DRAWING IS NOT TO BE DISCLOSED OR REPRODUCED, IN WHOLE OR IN PART, DIRECTLY OR INDIRECTLY, IN ANY MANNER WHATSOEVER, WITHOUT THE EXPRESS WRITTEN CONSENT OF BETAFENCE USA, AND IT SHALL BE RETURNED UPON REQUEST.

DEBURR ALL CUT EDGES UNLESS NOTED OTHERWISE

**PANEL SPECS & TOLERANCES**

**Tolerance of manufacture of cut lengths:**

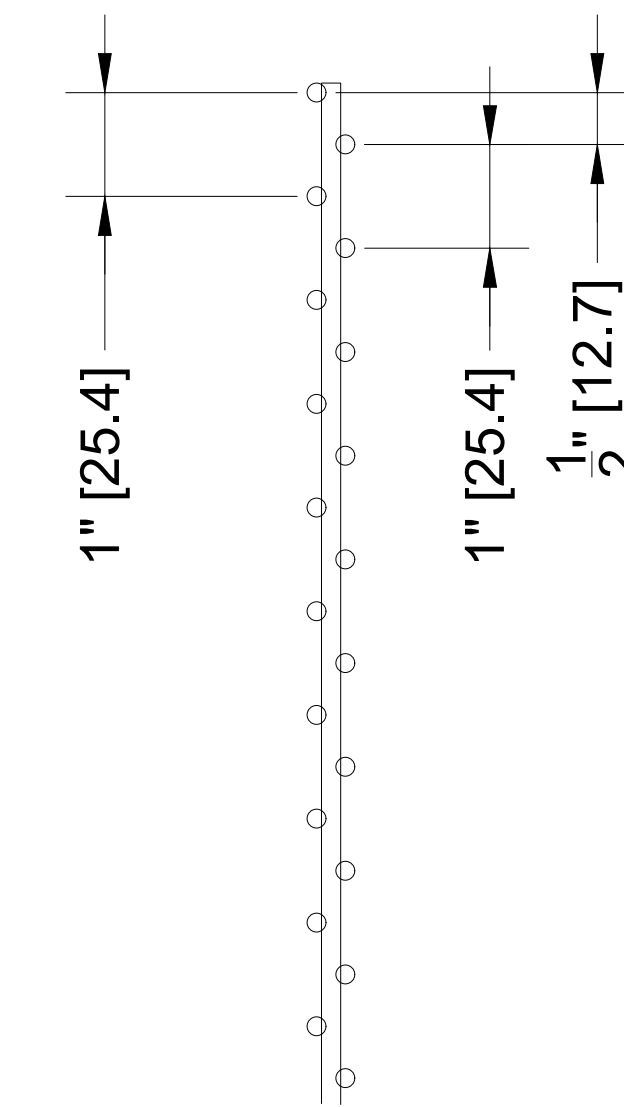
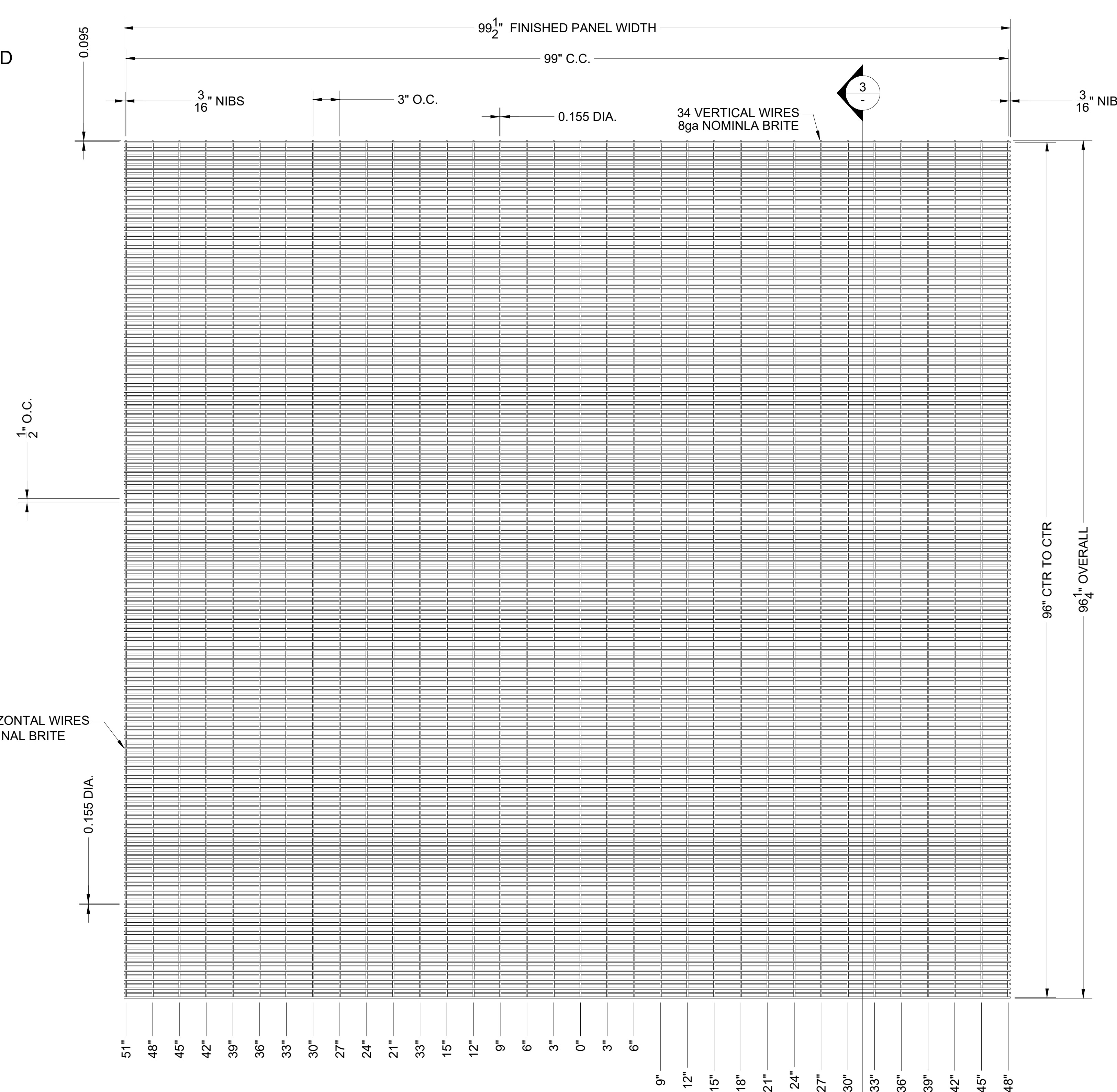
- Straightness of cross wires fed to welding +2,0 mm max to straight line

**Tolerance of manufacture of Securifor® (358) mesh types:**

- Tolerance of line wire pitch ± 2,0 mm
- Tolerance of cross wire pitch ± 1,0mm
- Line wire overhang front 4 ± 1 mm = **max. 5 mm** <sup>6</sup>
- Line wire overhang back 2m panel 3 ± 2 mm = **max. 5 mm** <sup>6</sup>
- Line wire overhang back 3m panel 3 ± 2,5 mm = **max. 5,5 mm** <sup>6</sup>
- Line wire overhang back 4m panel 5 ± 4 mm = **max. 9 mm** <sup>6</sup>
- Line wire overhang back 5m panel 6 ± 5 mm = **max. 11 mm** <sup>6</sup>
- Line wire overhang back 6m panel 6 ± 6 mm = **max. 11 mm** <sup>6</sup>
- Securifor® 4D and 2D line wire overhang front Max 20mm <sup>6</sup>
- Trimmed overhang of cross wires 0 ± 0,1 mm <sup>6</sup>
- Non-trimmed overhang of cross wires 0 + 2,0 mm
- No sharp cutting burrs: See sketch below

- Wire straightness line wires (bow) Max 4 mm <sup>1</sup>
- Cumulative spacing over 1200mm 1 mm <sup>1</sup>
- Contraction of the first crosswire 1.5mm/m of mesh width <sup>2</sup>
- Overall panel length (outer wires) ± 3,0 mm
- Squareness of panel (delta diagonals) Max. 6mm (up to 4m long panel) <sup>7</sup>
- Weld shear strength 75 % <sup>5</sup>
- Flatness: Max lift at any point on flat surface 40 mm <sup>3</sup>
- Deflection of panel when hanging Max 100mm <sup>4</sup>
- Tolerance of wire diameter + 0.06mm

**2 PANEL PLAN VIEW**  
SCALE: NTS



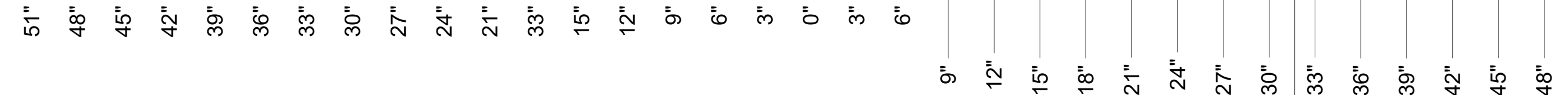
**4 ENLARGED VIEW**  
SCALE: NTS

**3 SECTION VIEW**  
SCALE: NTS

ENLARGED VIEW 4



**1 SECURIFOR 4D PANEL ELEVATION**  
SCALE: NTS



SAP Part Numbers		
Procedure	Color	SAP Number
Weld	BR	4047835
HDG	GA	4047836

REVISION	DATE	DESCRIPTION	BY	APPROVED

**MATERIAL SPECIFICATIONS:**  
TUBE STEEL - AS500 Grade B  
PLATE, ANGLE & CHANNEL - A36 Steel  
ALL WIRE - COMMERCIAL GALV.  
TYP. U.N.O.  
**FINISH:**  
SEE CHART ABOVE

**TOLERANCES**  
FRACTIONS ± 1/16  
.XX .032  
.XXX .016  
ANGLE .6°  
UNLESS OTHERWISE NOTED ON DRAWING

**BETAFENCE USA**  
Main: 972-878-7000 Fax: 214-887-4552  
3309 S. 145 ENNIS, TX 75119  
www.BetafenceUSA.com

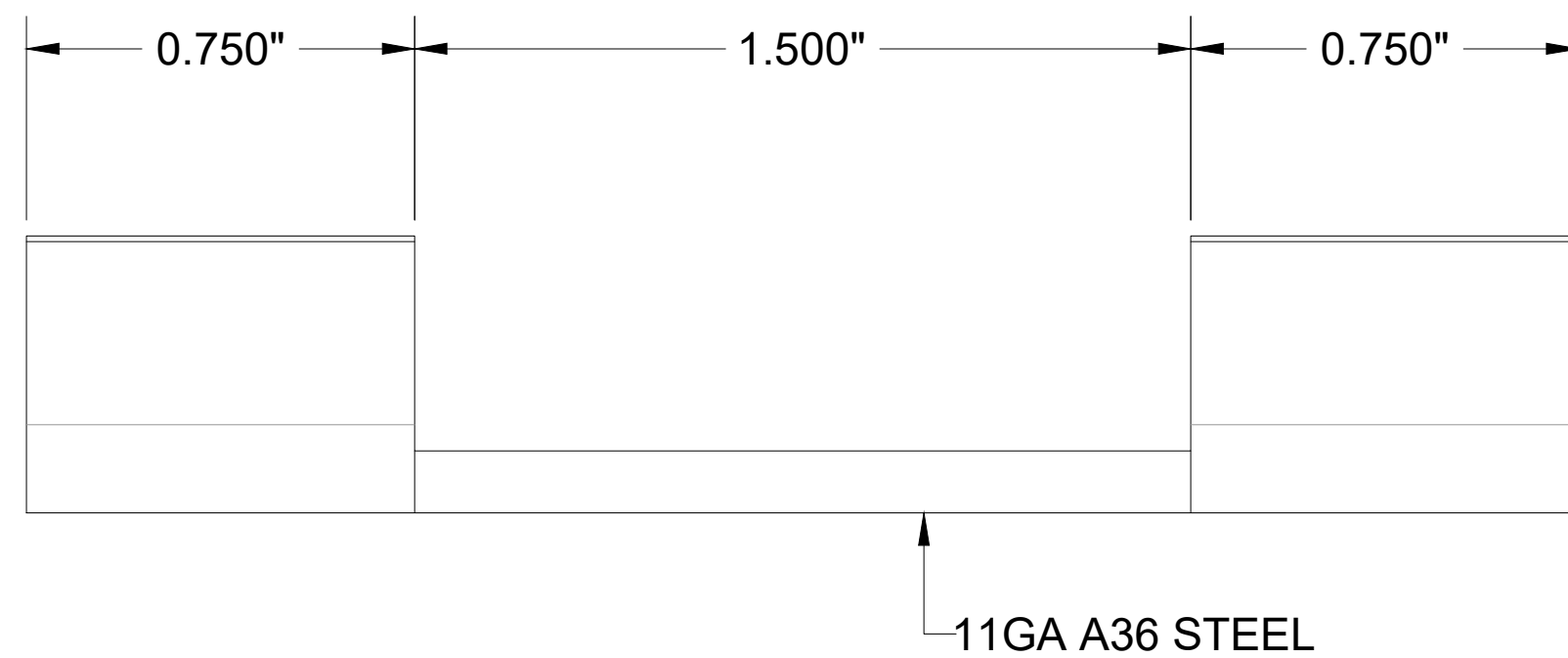
**DESCRIPTION:**  
PAN SECURIFOR® 4D1/1  
96SX99L GA

**SCALE:** N/A  
**DRAWN:** TJR  
**CHECKED:**  
**DATE:** 25-APR-22

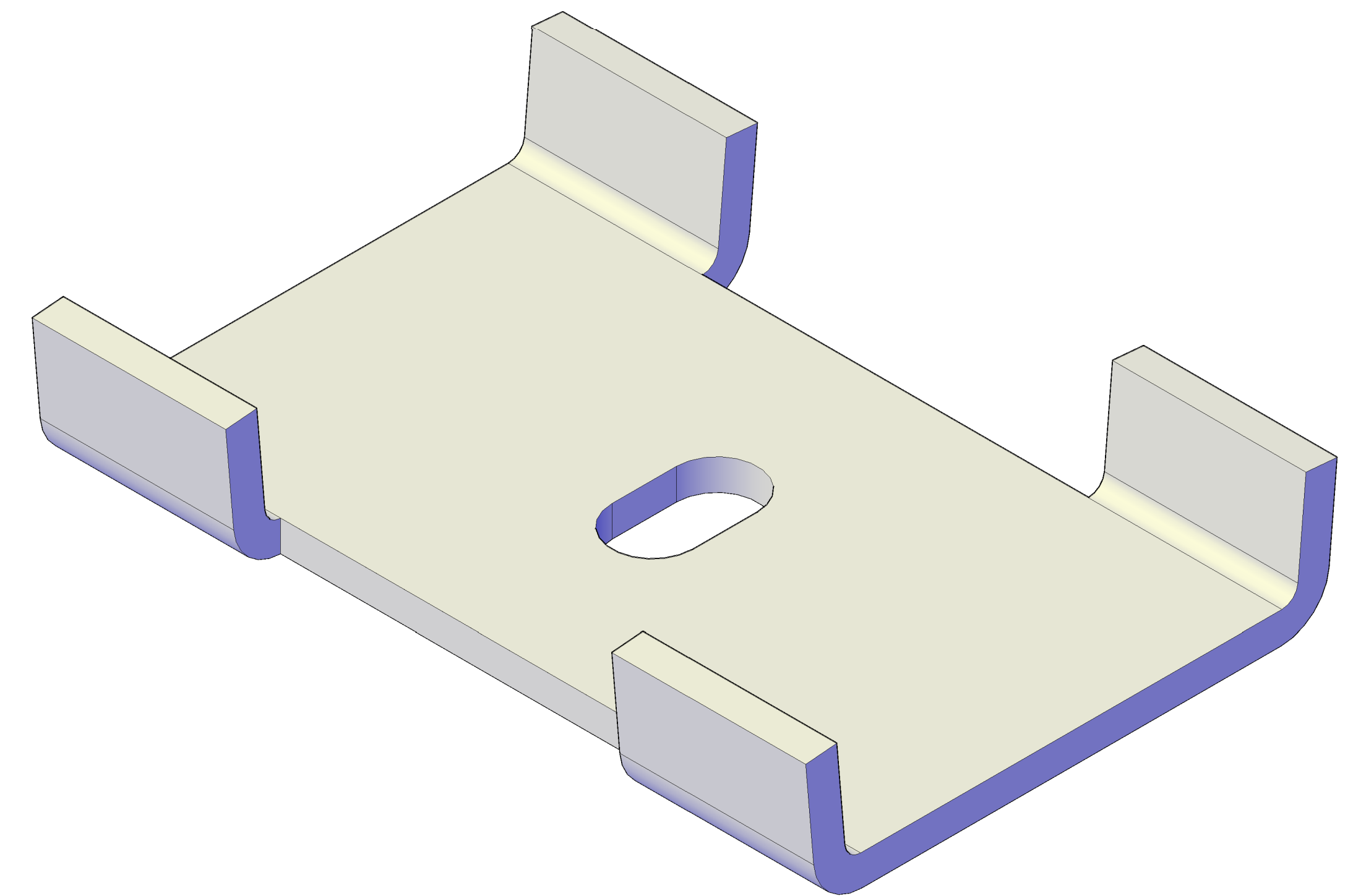
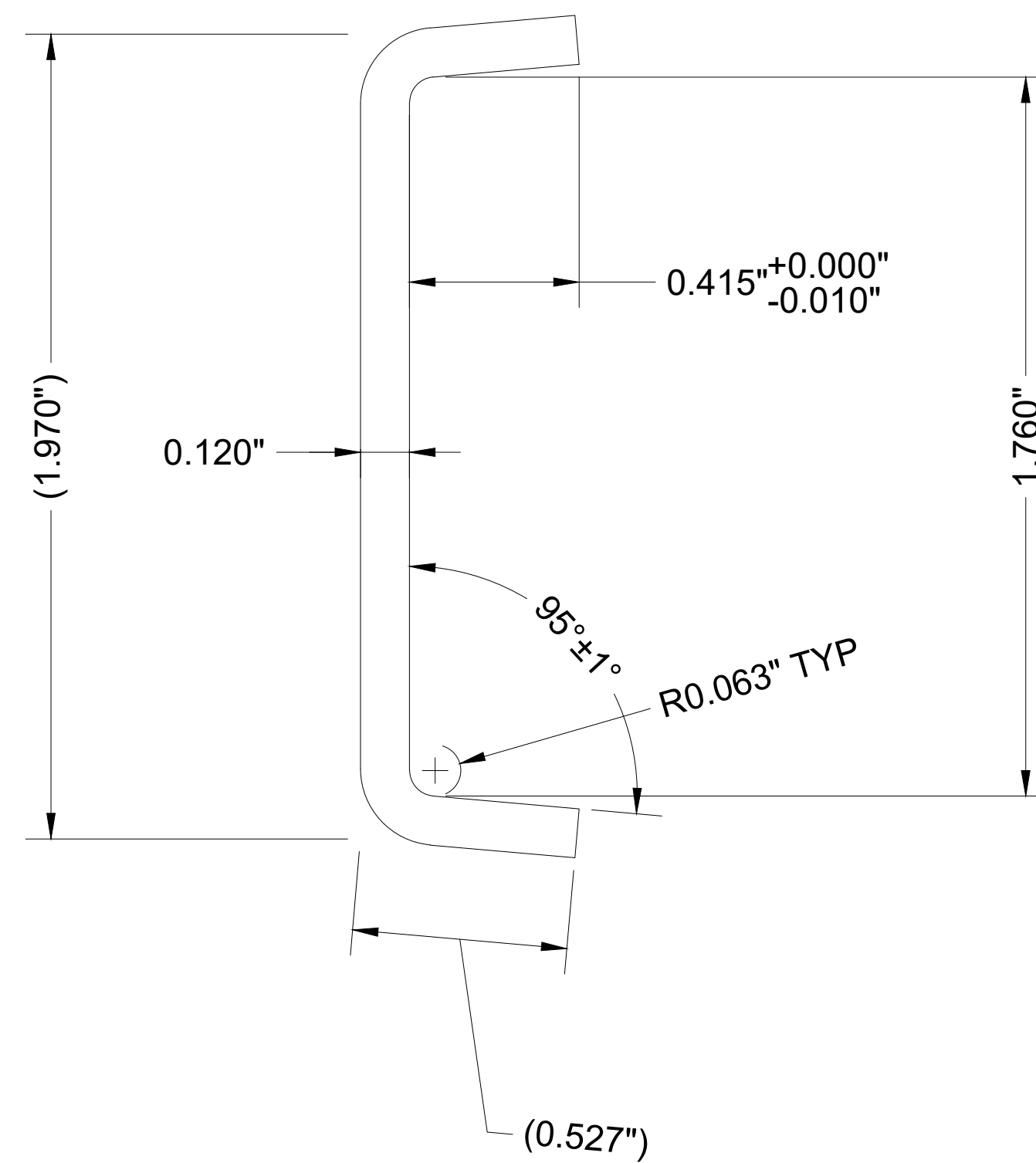
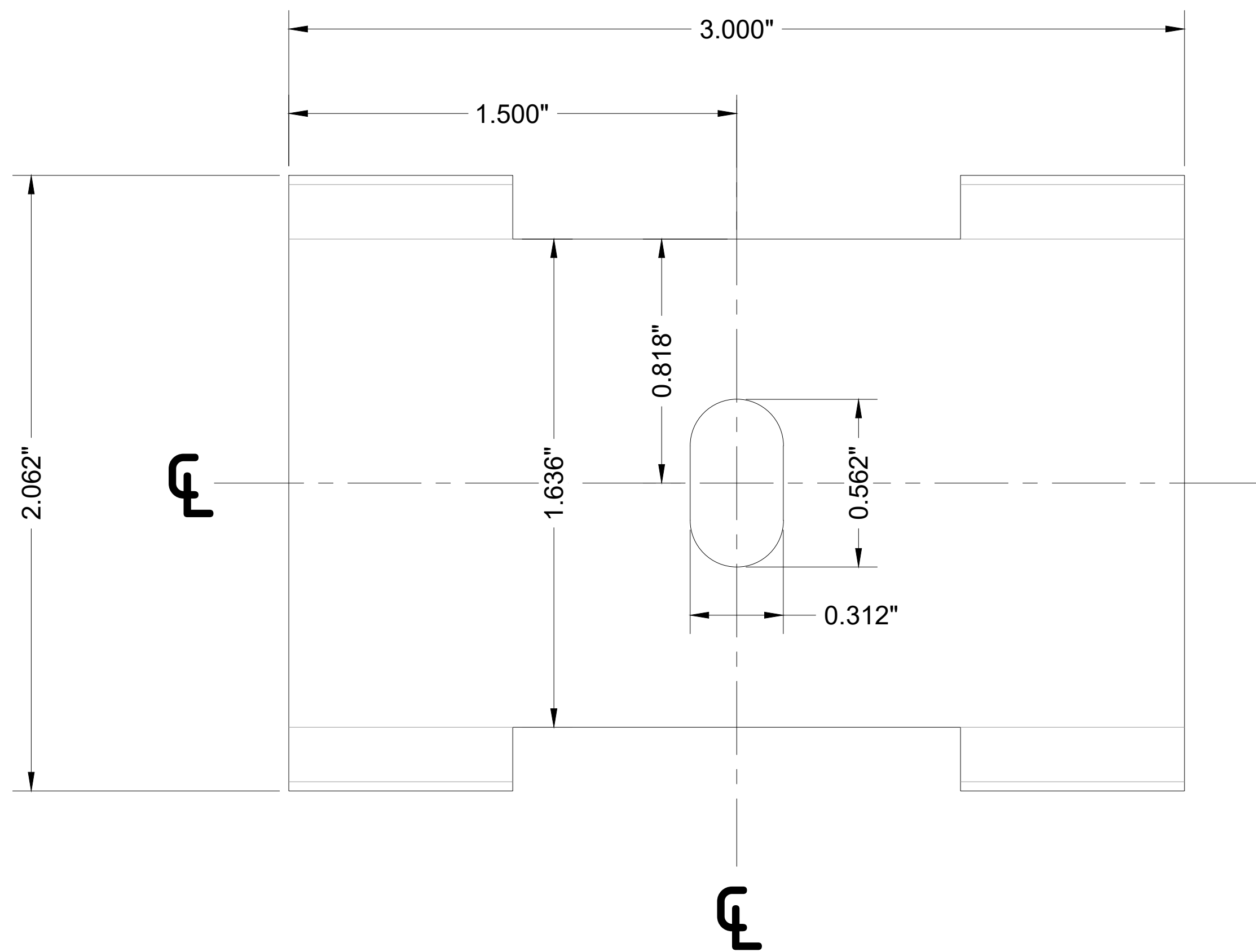
**PART NUMBER:**  
SEE CHART

**DRAWING NUMBER:**  
SEC33P201007

**NOTICE:** BETAFENCE USA CLAIMS PROPRIETARY RIGHTS TO ALL INFORMATION AND/OR TECHNICAL DATA CONTAINED ON THIS DRAWING WHICH IS TO BE MAINTAINED BY YOU IN STRICT CONFIDENCE. THIS DRAWING IS NOT TO BE DISCLOSED OR REPRODUCED, IN WHOLE OR IN PART, DIRECTLY OR INDIRECTLY, IN ANY MANNER WHATSOEVER, WITHOUT THE EXPRESS WRITTEN CONSENT OF BETAFENCE USA, AND IT SHALL BE RETURNED UPON REQUEST.



11GA A36 STEEL



SAP Part Numbers			
Procedure	Color	SINGLE SAP#	BOX OF 100
PURCH	GA	4047905	7088390
PAINT	Black	4047906	7088392

REVISION	DATE	DESCRIPTION	BY	APPROVED

**MATERIAL SPECIFICATIONS:**  
 TUBE STEEL - AS500 Grade B  
 PLATE, ANGLE & CHANNEL - A36 Steel  
 ALL WIRE - COMMERCIAL GALV.  
 TYP. U.N.O.  
**FINISH:**  
 SEE CHART



SCALE: N/A  
 DRAWN: TJR  
 CHECKED: XX  
 DATE: 09-MAY-22

TOLERANCES	
FRACTIONS	± 1/16"
.XX	.032
.XXX	.016
ANGLE	.6°
UNLESS OTHERWISE NOTED ON DRAWING	

DESCRIPTION:  
**BRAK HS FMNT  
 SPIDER SEC4D**

PART NUMBER:  
**SEE CHART**

DRAWING NUMBER:  
**SEC56P201001**

**NOTICE:** GUARDIAR CLAIMS PROPRIETARY RIGHTS TO ALL INFORMATION AND/OR TECHNICAL DATA CONTAINED ON THIS DRAWING WHICH IS TO BE MAINTAINED BY YOU IN STRICT CONFIDENCE. THIS DRAWING IS NOT TO BE DISCLOSED OR REPRODUCED, IN WHOLE OR IN PART, DIRECTLY OR INDIRECTLY, IN ANY MANNER WHATSOEVER, WITHOUT THE EXPRESS WRITTEN CONSENT OF BETAFENCE USA, AND IT SHALL BE RETURNED UPON REQUEST.

DEBURR ALL CUT EDGES UNLESS NOTED OTHERWISE



## Securifor® 4D

## FORCED ENTRY TESTED WELDED MESH PANEL

### Product detail



- ASTM F2781-10 tested for forced entry and ballistic resistance
- Deters and delays attacks
- 750% more rigidity
- 10 year warranty
- Superior anti-corrosion coatings

### BENEFITS

#### Extreme rigidity

Securifor® 4D's alternating wire configuration is tested\* and proven to be over 750% more rigid than traditional flat panels. This reduces engineering requirements or the need for rails to stabilize the panel.

#### Adequate delay time

Forced entry tests conducted to \*ASTM standards produced a Low Threat attack\*\* of nearly 8 minutes before the panel is breached.

#### Superior corrosion resistance

Securifor® 4D can be hot dipped galvanized or coated with a super-durable architectural grade powder coating.

#### Long Service Life

Surveillance systems have unobstructed visibility of activity behind the fence. The added rigidity reduces false alarms and reliability and contributes to a detection system's accuracy and reliability.

\* Panels tested in a horizontal orientation and subjected to a 500N force

\*\* Threat attack levels as defined by ASTM F2781 Standard

### Security level



### Applications



### Functionalities





## Panels

Every horizontal wire alternates between the front and back of the vertical wires delivering increased rigidity. The panels are fixed using specific full length cover plates and security bolts and nuts.

## Posts

The posts are available in a limited range of sizes to accommodate project specifications.

## Gates

The Securifor® 4D Fence System is compatible with a wide range of gate styles such as swing, v-track and cantilever gates.

## Superior Coating

The Securifor® 4D panels are manufactured using galvanized steel wire, coated with Betafence's exclusive Architectural Grade Powder Coat. This coating is super-durable and environmentally sound. Our powder coating provides the industry's highest weatherability and Gloss Retention in UV exposure – up to 5 times longer than competitors' powder coatings.



## Color

Black

## Warranty

The Securifor® 4D Fence System is produced using the highest quality material and equipment – and is backed by our 10-year Manufacturer's Warranty.

### SECURIFOR® 4D SPECIFICATIONS

Panel Width (Nominal)	Wire gauge	Panel height	Post length
8ft or <del>10ft</del>	8	8ft	11ft
8ft	8	10ft	13ft

## Betafence

3309 SW Interstate 45, Ennis, TX 75119 USA

Tel: +1 972 878 7000 | +1 888 650 4766

Betafence is the world market leader in fencing solutions, access control and detection for perimeter protection. All Betafence companies and product names are trademarks owned by PRÆSIDIAD Group Limited. Modification in products and assortment are subject to change without prior notice.

Proud to be a PRÆSIDIAD brand, Betafence is part of a global network, working alongside Guardiar and Hesco as a leader in perimeter security systems and solutions. For more information please visit [praesidiad.com](http://praesidiad.com).

## BETAFENCE

Securing What Matters

[betafence.com/contact](http://betafence.com/contact)