

RECEIVED  
DEC 22 2017  
Humboldt County  
Cannabis Svcs



Existing **CARINA**

- 7700 sq ft Veggie Garden
- 8019 99x81' Mound Garden.
- 2400 24x 100' sq ft Field 1
- 2800 28x 100x sq Ft Field 2
- 3000 sq ft Exist. 60p x 50'x Grape Garden
- 972 12x 81 sq ft. Beach Overlook Garden.
- 3200 50x 64' Pond Garden
- 2000 sq ft Exist. 40x 50'x River Trail Garden.
- 1920 30x 64' Sping Garden Abandoned
- 720 24x 30 Staging and Seasonal Nursery
- 4,050 50x 81' sq ft Exist. Ted's Place Garden.
- 2000 40x 50'x ft Clover Garden.















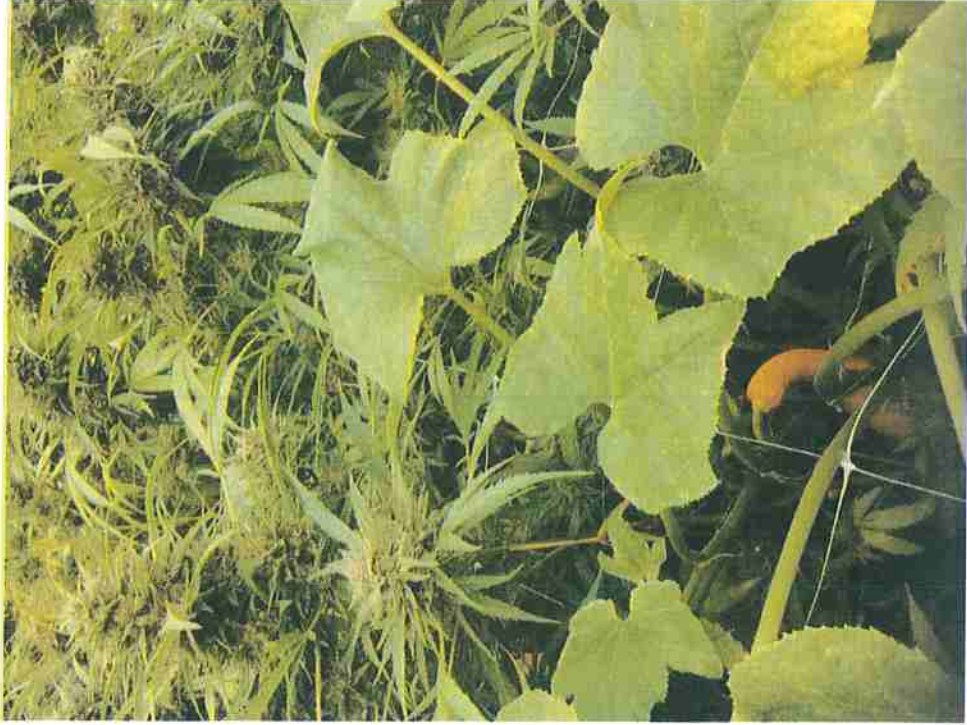
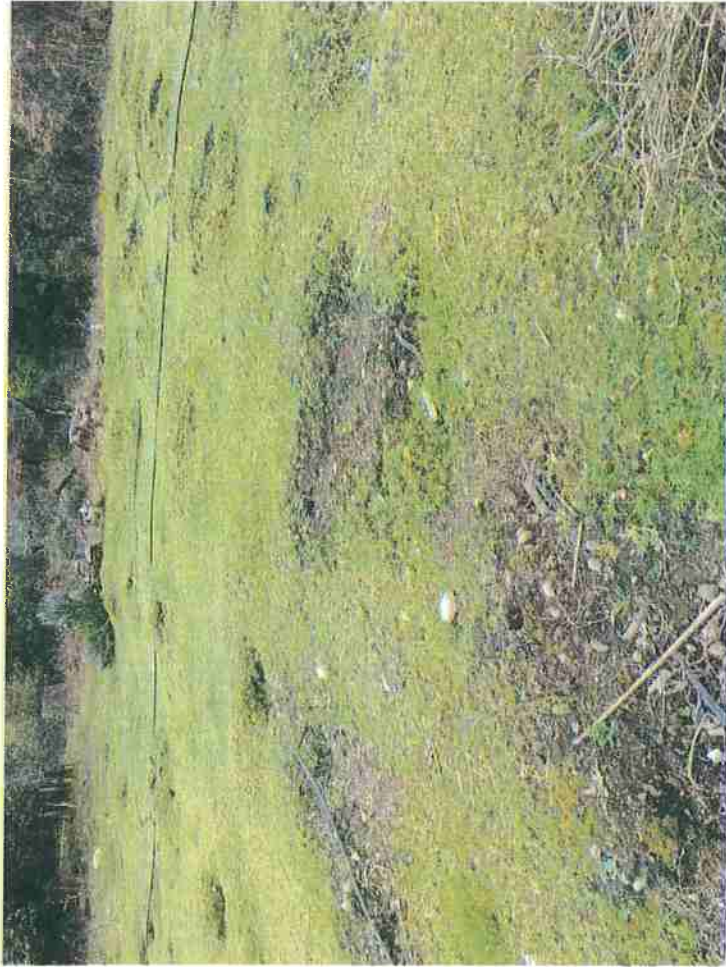


Overview of historical cultivation area located on APN 524-114-011, South Fork Road





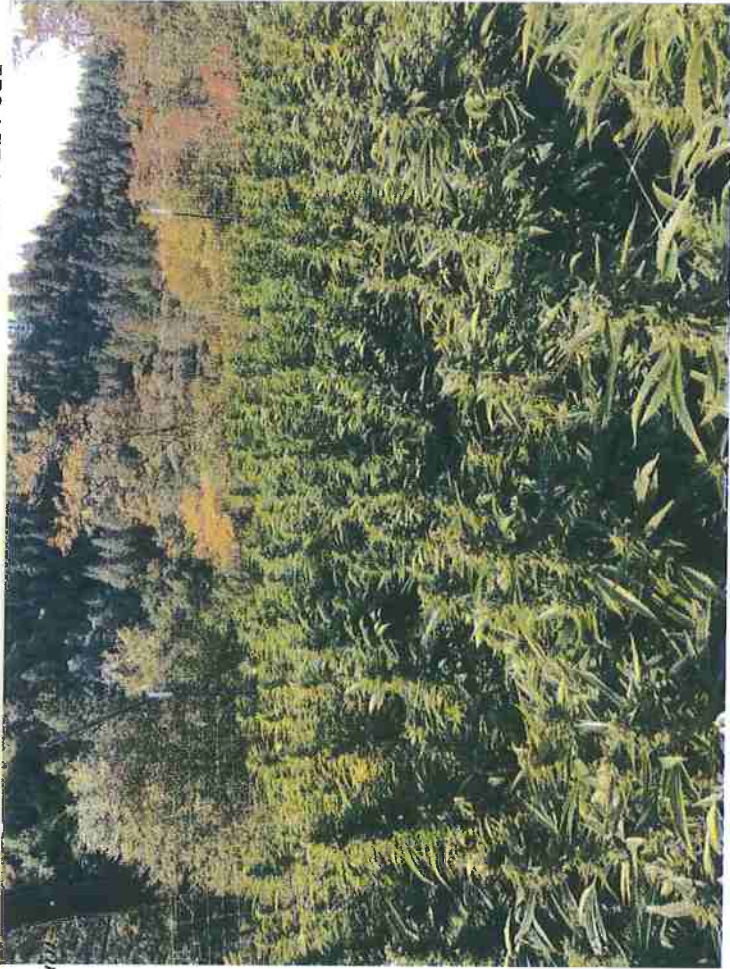
7,500 sq. ft. (50'x150') "Veggie Garden"



"Veggie Garden"



8,019 sq. ft. (99'x81') "Mound Garden"



Mound Garden

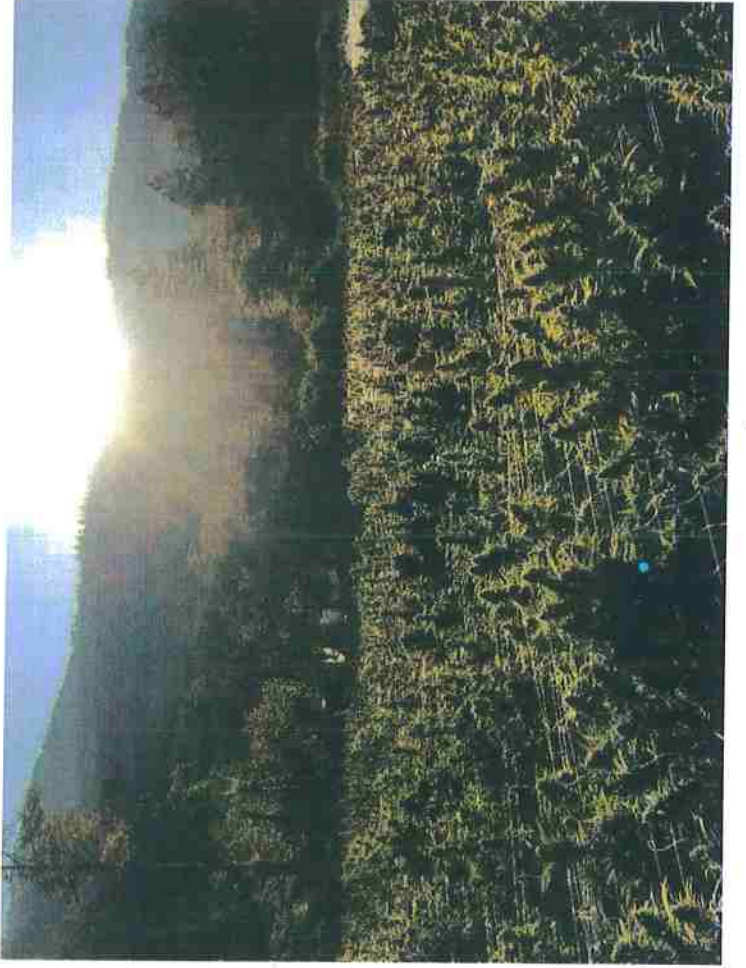


2,400 sq. ft (24'x100') "Field 1 Garden" 2,800 sq. ft. (28'x100') "Field 2 Garden"



“Field 1 Garden”

“Field 2 Garden”





3,000 sq. ft. (60'x50') "Grape Garden"

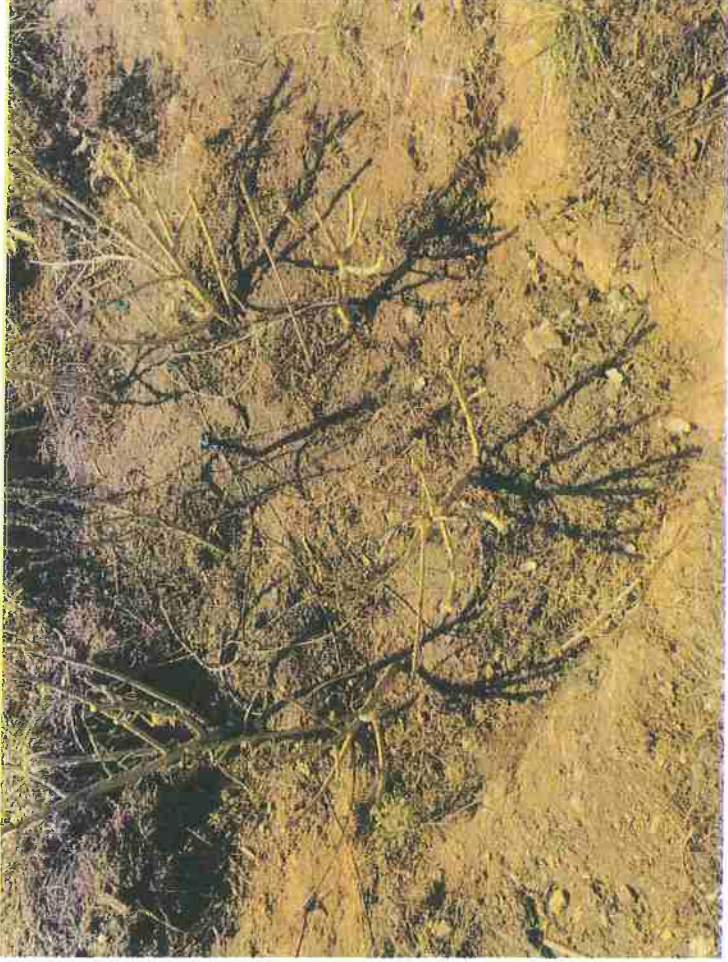




“Grape Garden”



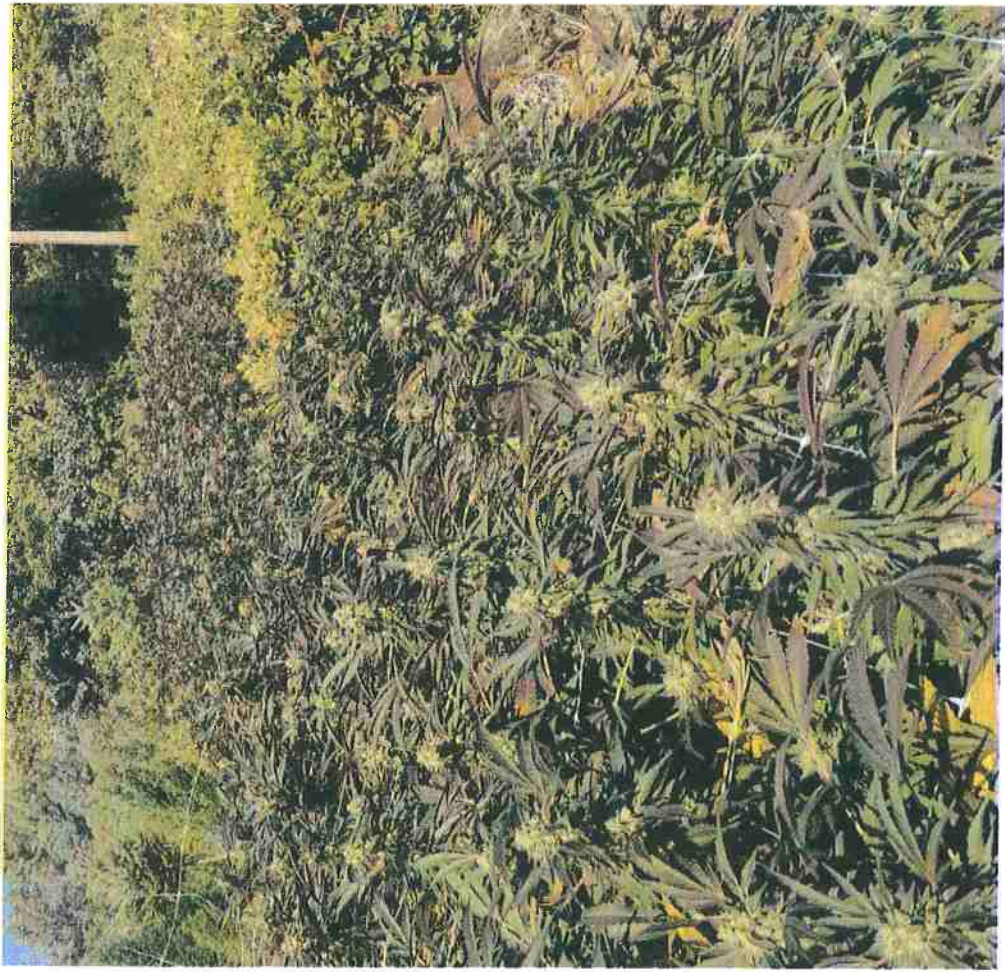
972 sq. ft. (12'x81') "Beach Overlook Garden"



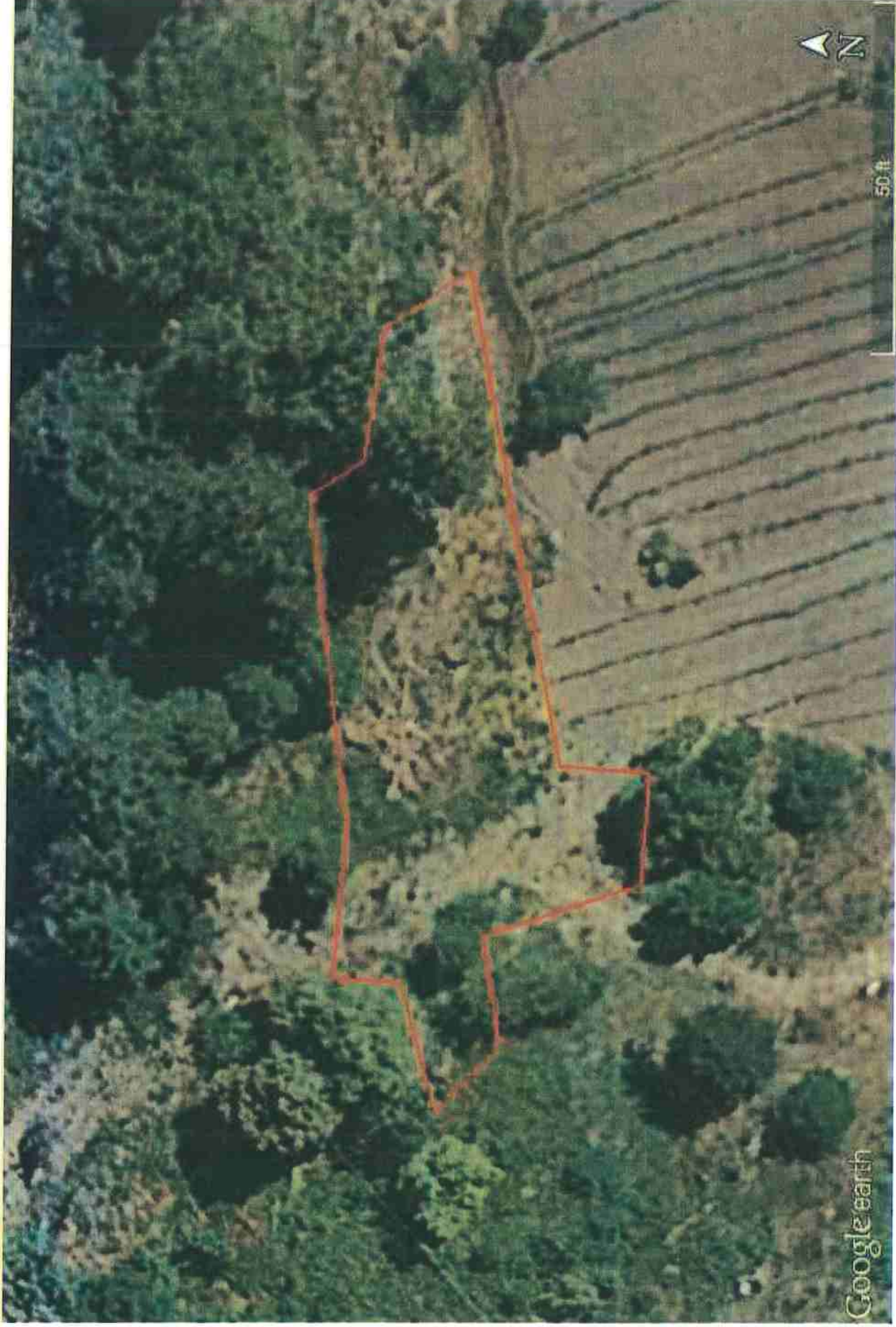
“Beach Overlook Garden”



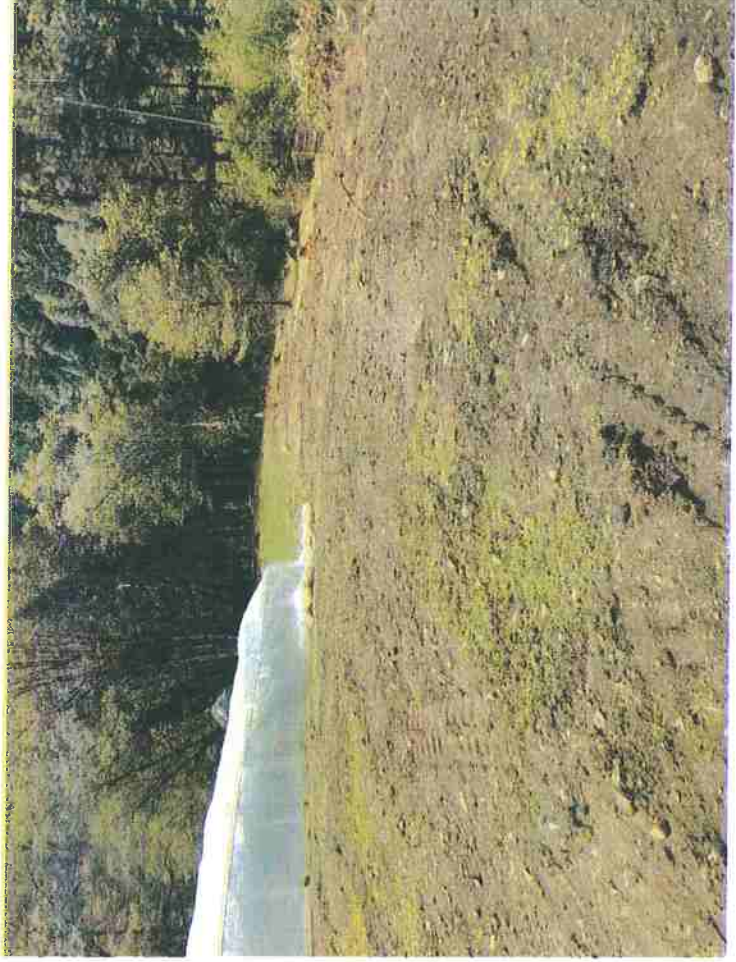
3,200 sq. ft. (50'60') "Pond Garden"



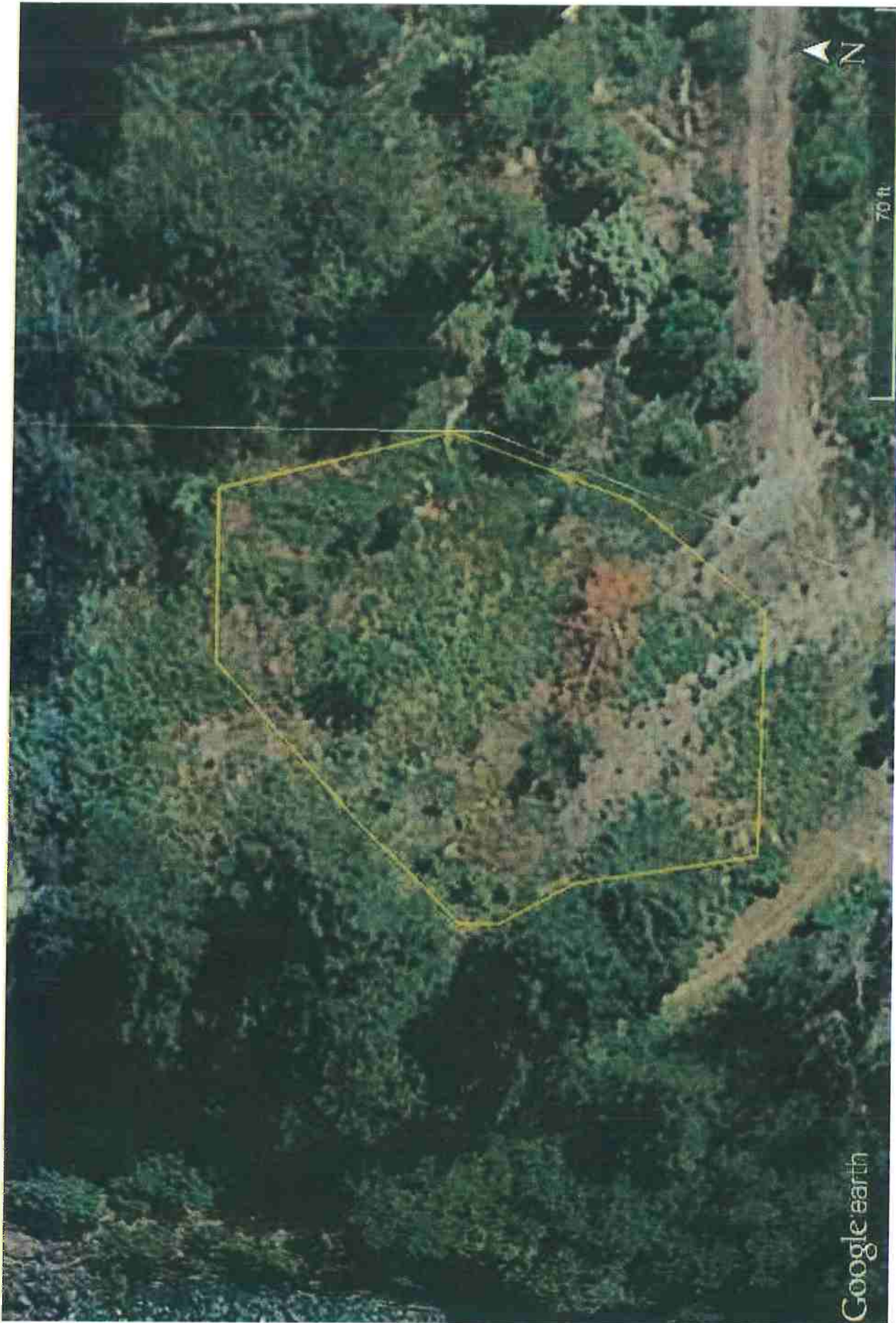
“Pond Garden”



2,000 sq. ft. (40' x 50') "River Trail Garden"

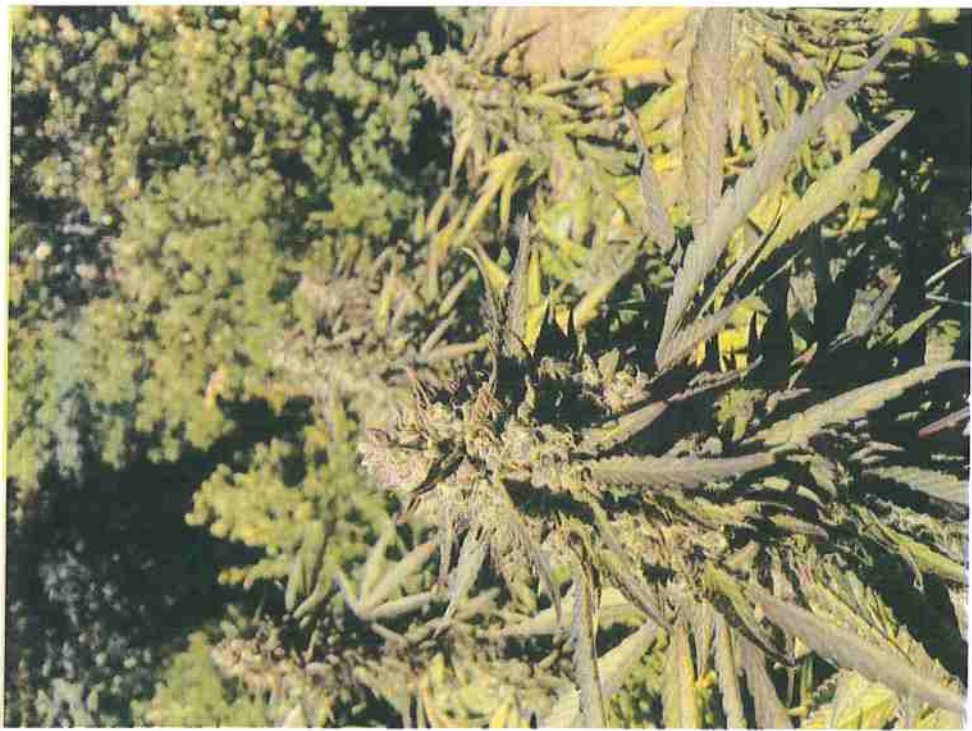


**“River Trail Garden”**

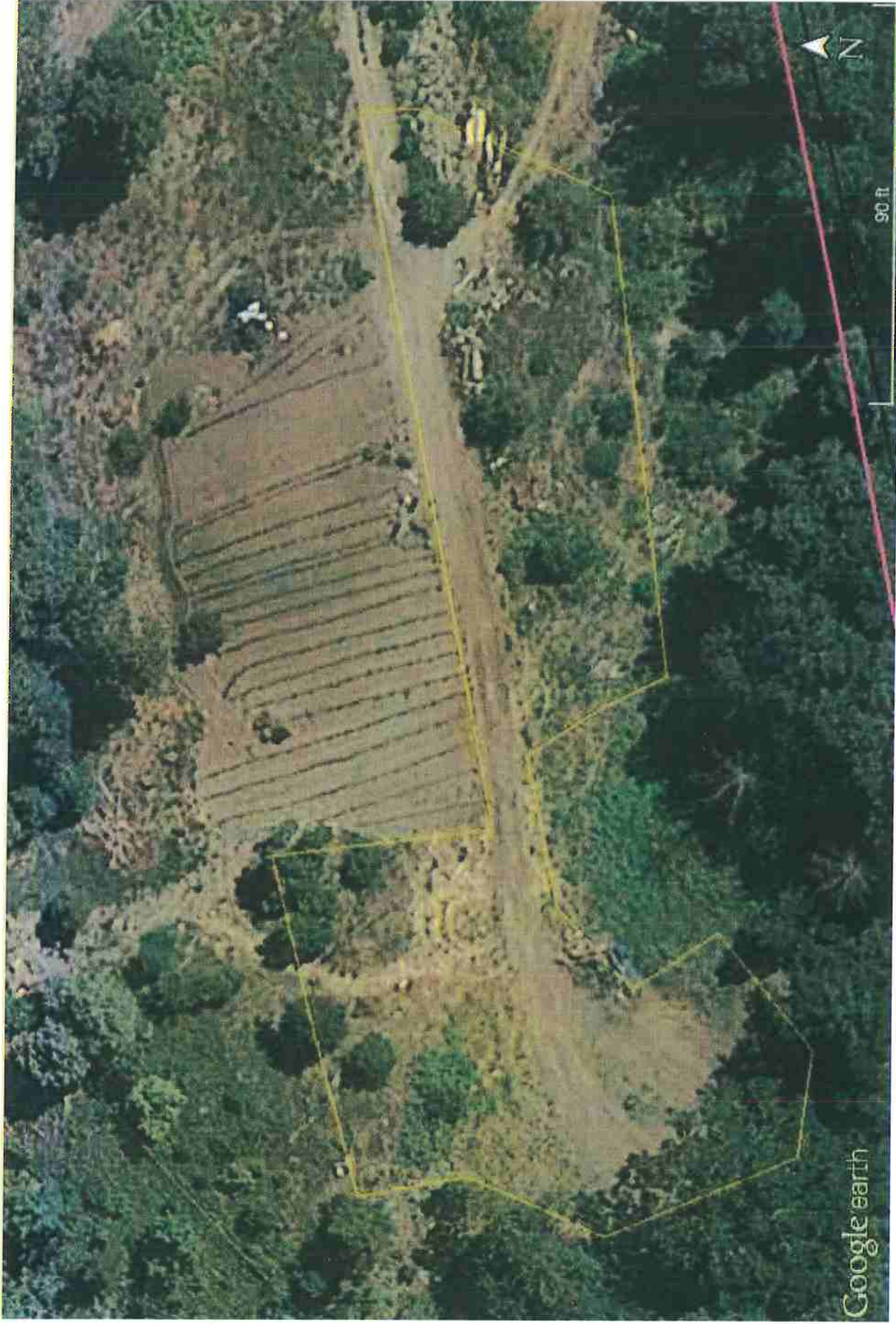


1,920 sq. ft. (30'x64') "Spring Garden"





“Spring Garden”



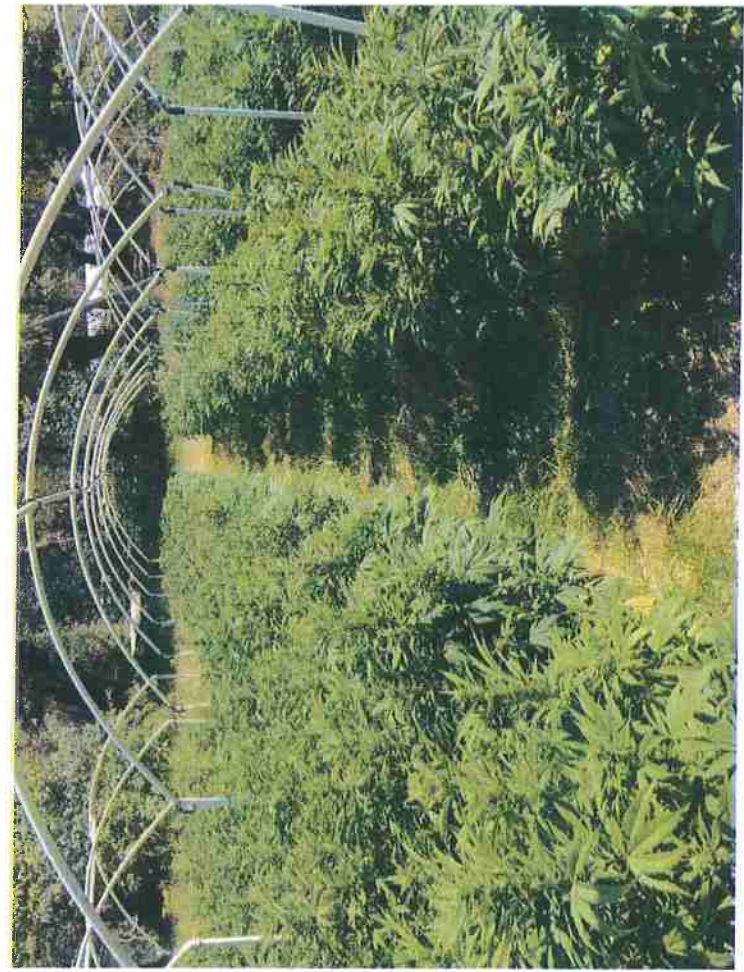
720 sq. ft (24'x30') "Staging and Seasonal Nursery 1"



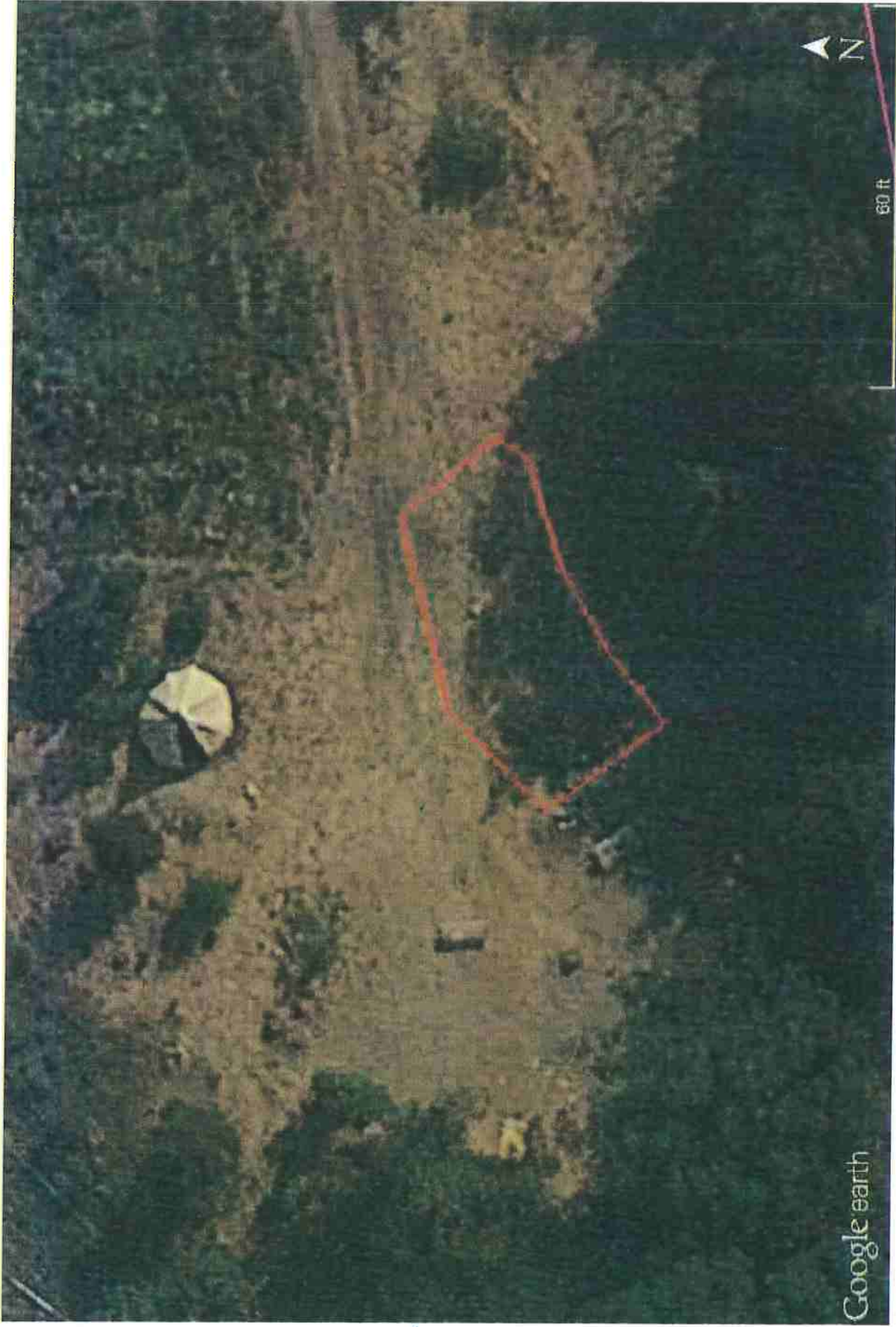
**“Staging and Seasonal Nursery 1”**



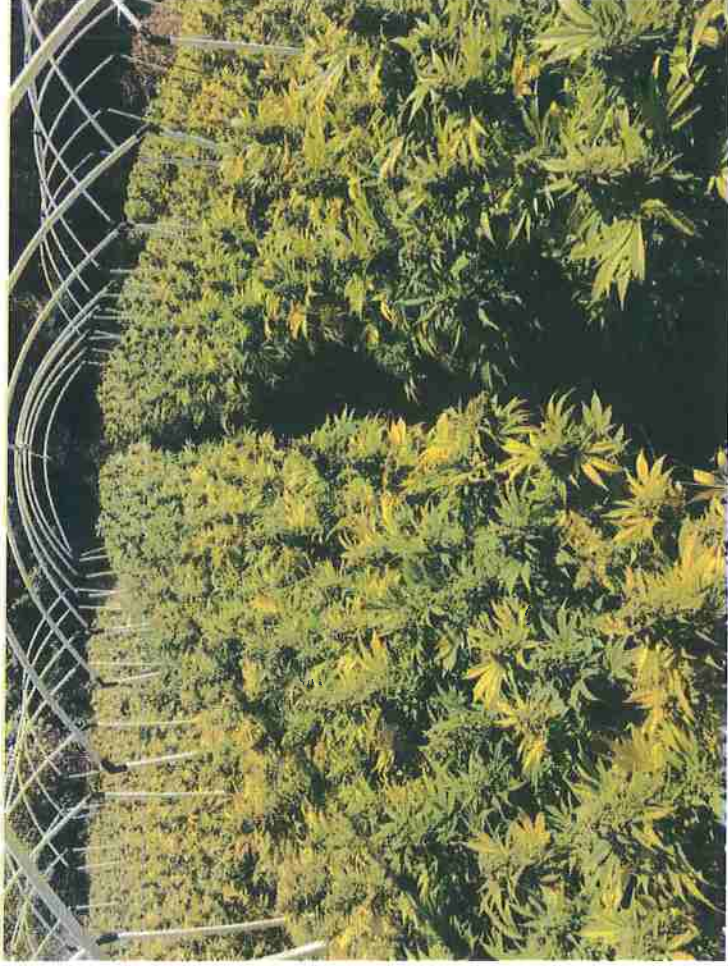
4,050 sq. ft. (50'x81') "Ted's Place Garden"



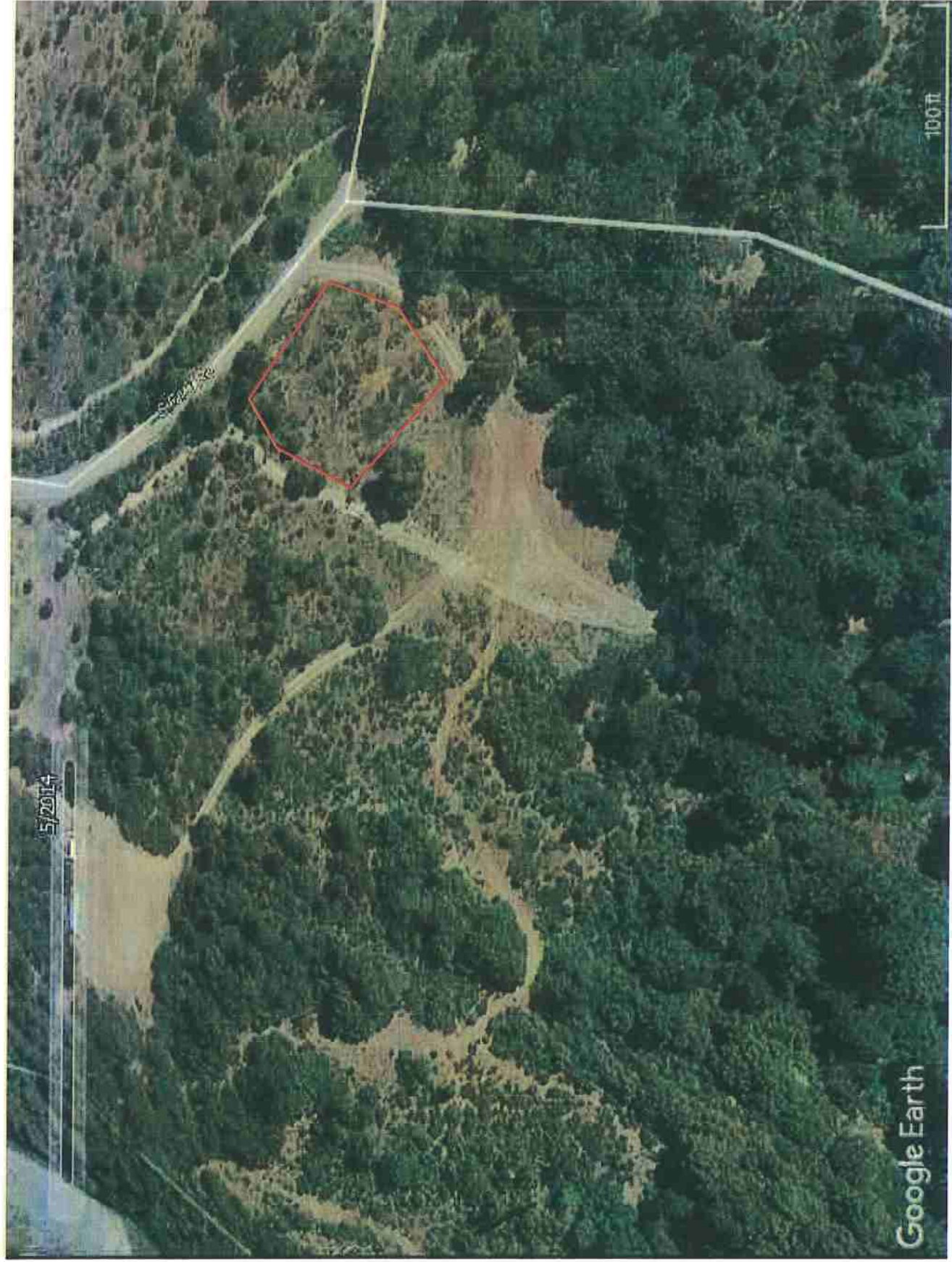
“Ted’s Place Garden”



2,000 sq. ft. (40'x50') "Clover Garden"



“Clover Garden”



3,000 sq. ft. (50'x60') "Staging and Seasonal Nursery 2"





“Staging and Seasonal Nursery 2”