

# BARRETT FARMS

APN: 208-341-034  
PLN-11547

### EXISTING CULTIVATION AREA

GH #3=2,000 FT<sup>2</sup>- 20x100 ft MIXED LIGHT  
 GH #4=2,000 FT<sup>2</sup> - 20x100 ft  
 GH #5=1,600 FT<sup>2</sup> - 20x80 ft  
 GH #6=2,000 FT<sup>2</sup> - 20x100 ft  
 GH #7=2,000 FT<sup>2</sup> - 20x100 ft  
 GH #8=2,000 FT<sup>2</sup> - 20x100 ft  
 GH #9=3,000 FT<sup>2</sup> - 30x100 ft (Not in use)  
 TOTAL CULTIVATION AREA 11,600 FT<sup>2</sup>  
 PROPOGATION AREA = 1,000 FT<sup>2</sup> - 20' x 50'

### CULTIVATION DOMESTIC AND USE

|         | USE               | YEAR | SIZE    |
|---------|-------------------|------|---------|
| SHED #5 | DOMESTIC STORAGE  | 2017 | 10'x12' |
| SHED #6 | PESTICIDE STORAGE | 2017 | 10'x12' |

### DECOMMISSIONED BUILDINGS TO BE REMOVED

|             | SIZE    |
|-------------|---------|
| <D>TRAILER  | 8x25'   |
| <D>BUILDING | 10'x20' |

### WATER STORAGE

| TYPE | NUMBER | YEAR | SIZE          |
|------|--------|------|---------------|
| HDPE | 6      | 2016 | 5,000 GALLONS |
| HDPE | 4      | 2016 | 2,500 GALLONS |
| HDPE | 1      | 2016 | 750 GALLONS   |
| HDPE | 13     | 2023 | 5,000 GALLONS |

TOTAL AMOUNT OF WATER STORAGE = 105,750 GALLONS




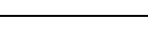


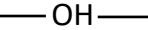


### WATER SOURCE

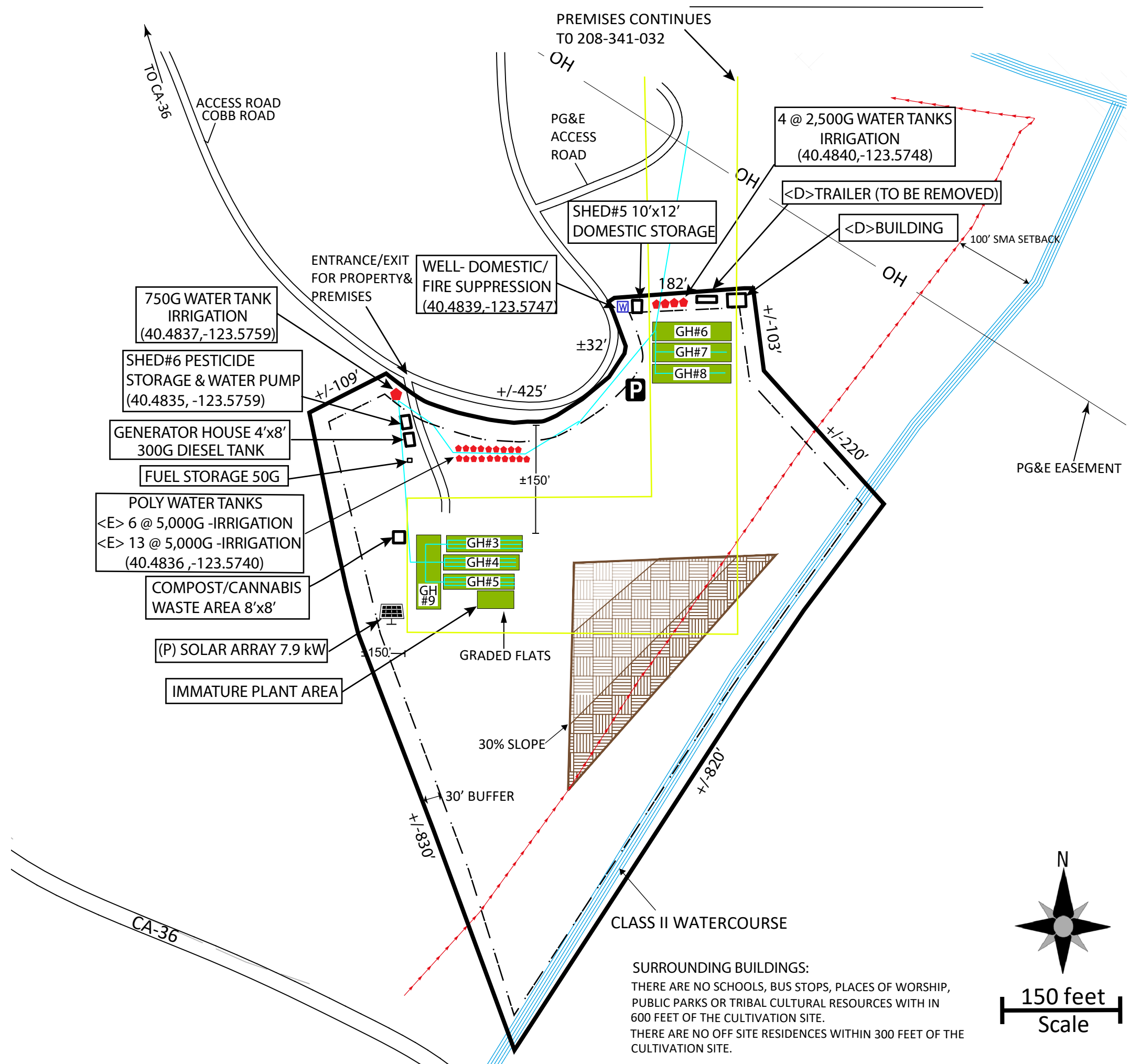
WELL & SOLAR PUMP-  
(40.4839,-123.5747)

### POWER SOURCE

SOLAR  
BACKUP GENERATOR

### LEGEND

|                                                                                       |                         |
|---------------------------------------------------------------------------------------|-------------------------|
|  | PREMISES LINE           |
|  | CLASS II WATERCOURSE    |
|  | 100' SMA SETBACK        |
|  | CULVERT/STREAM CROSSING |
|  | IRRIGATION LINE         |
|  | PROPERTY LINE/SETBACK   |
|  | PG&E EASEMENT           |
|  | WATER TANK              |
|  | TURNAROUND/ PARKING     |



SURROUNDING BUILDINGS:  
 THERE ARE NO SCHOOLS, BUS STOPS, PLACES OF WORSHIP,  
 PUBLIC PARKS OR TRIBAL CULTURAL RESOURCES WITH IN  
 600 FEET OF THE CULTIVATION SITE.  
 THERE ARE NO OFF SITE RESIDENCES WITHIN 300 FEET OF THE  
 CULTIVATION SITE.

