



**REQUEST FOR QUALIFICATIONS:
(RFQ No. DPW2024-002)**

**Professional Architecture and Engineering Services
for the Public Health Laboratory Replacement Project
Project #170256**

Date Released: February 27, 2024

Statements of Qualifications Due: March 29, 2024 (Received by 5 p.m.)

**Humboldt County Public Works Department
1106 Second Street
Eureka, California 95501**

**On behalf of:
Humboldt County Department of Health and Human Services – Public Health Division**

REQUEST FOR QUALIFICATIONS – NO. DPW2024-002
PROFESSIONAL ARCHITECTURE AND ENGINEERING SERVICES
FOR THE PUBLIC HEALTH LABORATORY REPLACEMENT PROJECT

TABLE OF CONTENTS

1.0	<u>DEFINITIONS:</u>	1
1.1	Terms	1
1.2	Abbreviations	1
2.0	<u>INTRODUCTION:</u>	2
2.1	Statement of Purpose	2
2.2	Project Background	2
2.3	Process Overview	3
3.0	<u>PRELIMINARY SCOPE OF SERVICES:</u>	2
3.1	Outline of Anticipated Services	2
3.2	Project Development	4
4.0	<u>REQUIREMENTS STATEMENT:</u>	4
4.1	Eligibility Requirements	4
4.2	Licensure, Certification and Accreditation Requirements	4
5.0	<u>SCHEDULE OF EVENTS:</u>	5
6.0	<u>GENERAL INFORMATION REGARDING STATEMENTS OF QUALIFICATIONS:</u>	5
6.1	Submission of Statements of Qualifications	5
6.2	Withdrawal of Submitted Statements of Qualifications	5
6.3	Modification of Submitted Statements of Qualifications	6
6.4	Consultant Investigations	6
6.5	Conflict of Interest	6
6.6	Public Records and Trade Secrets	6
6.7	Expenses Incurred in Preparing Statements of Qualifications	6
6.8	Right to Reject Statements of Qualifications	6
7.0	<u>REQUIRED FORMAT OF STATEMENTS OF QUALIFICATIONS:</u>	7
7.1	General Instructions and Information	7
7.2	Introductory Letter	8
7.3	Signature Affidavit	8
7.4	Table of Contents	8
7.5	Business Profile	8
7.6	Quality Assurance Capabilities	10
7.7	References	10
7.8	Supplemental Documentation	11
7.9	Evidence of Insurability and Business Licenses	11
7.10	Exceptions, Objections and Requested Changes	11
7.11	Required Attachments	12
8.0	<u>MODIFICATION AND CORRECTION:</u>	12
8.1	Requests for Clarification or Correction	12
8.2	Addenda	12

9.0	<u>EVALUATION CRITERIA AND REVIEW PROCESS:</u>	13
10.0	<u>CONTRACT DEVELOPMENT:</u>	13
10.1	Contract Negotiation Process	13
10.2	Award of Consultant Services Agreement	14
10.3	Contractual Requirements	15
11.0	<u>CANCELLATION OF THE RFQ PROCESS:</u>	17
 <u>ATTACHMENTS:</u>		
Attachment A – Public Health Laboratory Replacement Preliminary Program & Budget		19
Exhibit 1 to Attachment A – Preliminary Programming Schedule		
Exhibit 2 to Attachment A – Preliminary Bubble Diagram		
Exhibit 3 to Attachment A – Predesign Site & Zoning Diagrams		
Attachment B – Signature Affidavit		28
Attachment C – Reference Data Sheet		29
Attachment D – Sample Consultant Services Agreement		30

**REQUEST FOR QUALIFICATIONS – NO. DPW2024-002
PROFESSIONAL ARCHITECTURE AND ENGINEERING SERVICES
FOR THE PUBLIC HEALTH LABORATORY REPLACEMENT PROJECT**

1.0 DEFINITIONS:

1.1 Terms:

- A. **Addenda.** As used herein, the term “Addenda” refers to an amendment or modification to this Request for Qualifications.
- B. **Consultant.** As used herein, the term “Consultant” refers to any individual, firm or company submitting a Statement of Qualifications in response to this Request for Qualifications.
- C. **Consultant Services Agreement.** As used herein, the term “Consultant Services Agreement” refers to the contract between the County and the Successful Consultant regarding the provision of the professional architecture and engineering services.
- D. **County.** As used herein, the term “County” refers to the County of Humboldt, a political subdivision of the State of California, acting through its Department of Public Works – Facilities Management Division.
- E. **Project.** As used herein, the term “Project” refers to the Public Health Laboratory Replacement Project.
- F. **Project Team.** As used herein, the term “Project Team” refers to the members of a Consultant’s staff, and all subconsultants, that will be responsible for providing the professional architecture and engineering services set forth in this Request for Qualifications.
- G. **Statement of Qualifications.** As used herein, the term “Statement of Qualifications” refers to the document submitted by a Consultant in response to this Request for Qualifications.
- H. **Successful Consultant.** As used herein, the term “Successful Consultant” refers to the individual, firm or company that the County chooses to enter into a final Consultant Services Agreement with after the review, evaluation, selection, contract negotiation and approval processes set forth in this Request for Qualifications have been successfully completed.
- I. **Services.** As used herein, the term “Services” refers to specified professional architecture and engineering services that are required to assist the County with the Public Health Laboratory Replacement Project.

1.2 Abbreviations:

- A. **RFQ.** As used herein, the abbreviation “RFQ” refers to this Request for Qualifications seeking consulting firms to provide professional design engineering services to assist the County with the Public Health Laboratory Replacement Project.
- B. **SOQ.** As used herein, the abbreviation “SOQ” refers to a Statement of Qualifications submitted by a Consultant in response to this Request for Qualifications.

2.0 INTRODUCTION:

2.1 Statement of Purpose:

The County of Humboldt (“County”), by and through its Public Works Department – Facilities Management Division, is issuing this request for Qualifications (“RFQ”) to retain an experienced and qualified consulting firm to provide professional architecture and engineering services (“Services”) for the Public Health Laboratory Replacement Project (“Project”) which will include biosafety level 2 (BSL-2) and biosafety level 3 (BSL-3) laboratory spaces. The Successful Consultant must have the ability to provide trained and experienced personnel and staff to perform the Services set forth in this RFQ, which include, without limitation, preparing programming and planning studies, architectural design, construction cost estimating, building systems engineering, construction administration and other miscellaneous support services. It should be noted that this RFQ is a non-binding solicitation for such Services and may be canceled at any time.

2.2 Project Background:

The County desires to design and construct a new stand-alone two-story public health laboratory building of approximately 10,000 s.f., on County-owned land located in Eureka, California. The new facility’s primary purpose will be to house new BSL-2 and BSL-3 laboratory spaces and associated office space with an emphasis on implementing advanced molecular detection (AMD) processes for County Public Health Laboratory staff.

The site will be designed to include hardscape and landscaped exterior areas and site improvements including parking, fencing, stormwater mitigation and flatwork as necessary to construct a new facility for use by Public Health Department laboratory staff.

The project will be a fully sprinklered type-VA building and may include, without limitation, all of the following: concrete; masonry; metals; carpentry; casework; thermal and moisture protection; doors and windows; finishes; specialties; elevator; lab furnishings and equipment (as determined by staff and design team); electrical; plumbing; mechanical; heating, ventilation, and air conditioning; security systems; site improvements; fencing; site utilities; supplemental photovoltaic (solar) power and storage; emergency power; and fire protection systems.

Refer to Attachment A to this RFQ for the preliminary project program and further information.

2.3 Process Overview:

Information received as part of the Statements of Qualification (“SOQ”) submitted in response to this RFQ shall be objectively evaluated to identify the Consultant that is best qualified to provide the Services set forth in this RFQ. At the conclusion of the review, evaluation, selection, contract negotiation and approval processes set forth in this RFQ, a Consultant Services Agreement pertaining to the provision of Services set forth in this RFQ will be awarded to the Successful Consultant. The final Consultant Services Agreement will have a term of thirty-three (33) months unless, prior to its expiration, such term is extended through written amendment to the Consultant Services Agreement. The maximum total amount payable by the County pursuant to the terms and conditions of the Consultant Services Agreement is currently estimated at One Million Five Hundred Thousand Dollars (\$1,500,000.00).

3.0 **PRELIMINARY SCOPE OF SERVICES:**

3.1 **Outline of Anticipated Services:**

The outline of anticipated services presented herein is for the primary purpose of allowing the County to compare SOQs submitted in response to this RFQ. The precise scope of services that will be incorporated into the final Consultant Services Agreement shall be the subject of negotiations between the County and the Successful Consultant.

- A. **Architecture and Engineering Services.** The types of architecture and engineering services that the Successful Consultant may be required to provide pursuant to the terms and conditions of the final Consultant Services Agreement may include, without limitation, all of the following:
1. Providing pre-design services such as programming, code review, zoning code review, site planning, analysis of existing site conditions, identifying site issues requiring further investigation and coordination, and general project budget estimating for planning purposes. Deliverables may include programming documentation, bubble diagrams, planning drawings, code compliance reports.
 2. Providing project planning; architecture, interior design, landscape architecture, and associated engineering for the project. Work will be structured in phases and will include discrete phases of pre-design, schematic design, design development, construction documents, bidding & negotiations, construction administration, and project closeout. Deliverables may include drawings, specifications, engineering calculations, energy calculations, miscellaneous reports, construction cost estimates, construction administration documentation, as-built drawings and letters of conformance.
 3. Providing full consulting engineering services to complete the project, expected to include civil engineering, structural engineering, mechanical engineering, electrical engineering, fire protection and other specialized building systems engineering as needed to support BSL-2 & BSL-3 laboratory design as required by the scope of the project.
 4. Providing wet and dry utility coordination with utility providers including electricity, natural gas, water, sewer and other utility services as may be required for the construction and future operation of the building. This will include expediting a PG&E electrical service application with follow-up support as necessary.
 5. Reviewing and recommending facility resiliency and sustainability measures including emergency power generation, supplemental photovoltaic (solar) power and storage, rainwater and/or gray water harvesting systems, and other applicable technologies or approaches as required by the California Building Code, and warranted by the project site, stakeholder inputs, and budgetary restrictions.
 6. Coordinating and managing the entitlement and permitting process for the project, including planning and zoning reviews, building department submittal of construction documents, and addressing all construction document modifications required to secure agency approvals throughout the process. The Successful Consultant will prepare all applications and attend meetings or hearings as necessary to secure all approvals.

7. Ensuring that all applicable construction plans, specifications and designs for the project comply with the Americans with Disabilities Act Accessibility Design Guidelines and Standards and all applicable accessibility provisions in the California Building Code.

3.2 **Project Development:**

The County expects that the Successful Consultant will maintain timely and regular communication with the County throughout the term of the final Consultant Services Agreement in order to plan and organize information, including, without limitation, participating in regular planning and coordination meetings, providing monthly written updates and providing drafts of work to provide as progress reports to grant funders.

4.0 **REQUIREMENTS STATEMENT:**

4.1 **Eligibility Requirements:**

- A. **Required Qualifications.** In order to be considered for award of a Consultant Services Agreement pursuant to this RFQ process, Consultants must possess, at a minimum, all of the following qualifications:
 1. At least ten (10) years of experience in providing services equivalent to those set forth in this RFQ.
 2. At least five (5) public health / biomedical science laboratory projects constructed within the past ten (10) years.
 3. Familiarity with local, state, and federal laws, regulations, standards and best practices applicable to the Services set forth in this RFQ.
 4. Familiarity and experience designing for BSL-2 & BSL-3 laboratory spaces and all associated mechanical, electrical and plumbing systems using the Biosafety in Microbiological and Biomedical Laboratories (BMBL) guidelines published by the CDC and NIH, the NIH Design Requirements Manual, and the APHL Laboratory Facilities Construction and Major Renovations Guidelines.
 5. Knowledge of current architecture and engineering practices and techniques, including, without limitation, the ability to prepare and review construction plans and specifications.
 6. Knowledge of the standard methods, techniques and practices used in the design and construction of a variety of public works projects in the State of California.
 7. Good verbal and written communication skills.
- B. **Required Personnel.** In order to be considered for award of a Consultant Services Agreement pursuant to this RFQ process, Consultants must have personnel that are capable, competent and experienced in performing the Services set forth herein with minimal instruction. The types of personnel that Consultants must have available shall include, without limitation, appropriately licensed architects, project managers, professional engineers and engineering

staff that are responsible for providing, coordinating and scheduling the Services set forth in this RFQ.

4.2 Licensure, Certification and Accreditation Requirements:

In order to be considered for an award of a Consultant Services Agreement pursuant to this RFQ process, Consultants must be in compliance with any and all applicable local, state and federal licensure, certification and accreditation requirements and standards.

5.0 SCHEDULE OF EVENTS:

The following schedule of events represents the County’s best estimate of the schedule that will be followed with regard to this RFQ process. Unless otherwise specified, the time of day for the following events shall be between 8:00 a.m. and 5:00 p.m. Pacific Standard Time (“PST”). The County hereby reserves the right, at its sole discretion, to modify this tentative schedule as it deems necessary, including, without limitation, extending the deadline for submission of SOQs.

EVENT	DATE
RFQ Issued by the County:	February 27, 2024
Deadline for Submission of Questions:	March 21, 2024
Deadline for Responses to Questions:	March 25, 2024
Deadline for SOQs to be Received:	March 29, 2024, 5:00 p.m. PST
Consultant Interviews (if necessary - virtual):	TBD
Completion of Review and Evaluation Process:	April 15, 2024
Finalization of Consultant Services Agreement:	April 29, 2024 (Tentative)
Recommendation of Award to Board of Supervisors:	May 15, 2024 (Tentative)
Start Date of Consultant Services Agreement:	May 21, 2024 (Tentative)

6.0 GENERAL INFORMATION REGARDING STATEMENTS OF QUALIFICATIONS:

6.1 Submission of Statements of Qualifications:

Consultants shall prepare and submit one (1) original SOQ, and one (1) electronic copy thereof, in PDF format on a CD, DVD or thumb drive, by **5:00 p.m. PST**, on **March 29, 2024**. SOQs shall be signed by an authorized agent of the Consultant, and must be placed in a sealed envelope clearly marked “RFQ No. DPW2024-002” along with the name and address of the Consultant and the closing date and time for submission of SOQs. SOQs that are not signed by an individual authorized to bind the Consultant will be rejected. SOQs shall be personally delivered or mailed to:

COUNTY: Humboldt County Department of Public Works
Attention: Thomas K. Mattson, Director
1106 Second Street
Eureka, California 95501

SOQs submitted to any other County office will be rejected and returned to the Consultant unopened. Time is of the essence, and any SOQs received after the above-referenced date and time for submittal, whether by mail or otherwise, will be rejected and returned to the Consultant unopened. It is the sole responsibility of the Consultant to ensure that its SOQ is received before the submittal

deadline, and postmarks will not be accepted in lieu of this requirement. However, nothing in this RFQ precludes the County from extending the deadline for submission of SOQs or from requesting additional information at any time during the evaluation process.

6.2 Withdrawal of Submitted Statements of Qualifications:

A Consultant may withdraw its SOQ at any time prior to the above-referenced submittal deadline by submitting a written notification of withdrawal signed by the consultant or an authorized representative thereof. Consultants must retrieve the entire sealed SOQ package in person. SOQs will become the County's property after the submission deadline has passed.

6.3 Modification of Submitted Statements of Qualifications:

Any Consultant who wishes to make modifications to a submitted SOQ must withdraw its initial SOQ as required by this RFQ. It is the responsibility of the Consultant to ensure that a modified SOQ is resubmitted before the designated deadline for submission of SOQs in accordance with the terms of this RFQ. SOQs may not be changed or modified after the submission deadline.

6.4 Consultant Investigations:

Before submitting a SOQ, each Consultant shall make all investigations and examinations necessary to ascertain its ability to perform the Services set forth in this RFQ in accordance with the requirements and standards described herein. In addition, each Consultant shall verify any representations made by the County that the Consultant will rely upon. Failure to make such investigations and examinations will not relieve the Consultant from its obligation to comply with all provisions and requirements set forth in this RFQ. In addition, a Consultant's lack of due diligence will not be accepted as a basis for any claim for monetary consideration on the part of the Consultant.

6.5 Conflict of Interest:

By submitting a SOQ in response to this RFQ, Consultant warrants and covenants that no official or employee of the County, nor any business entity in which an official or employee of the County has an interest, has been employed or retained to assist in the preparation or submission of such SOQ.

6.6 Public Records and Trade Secrets:

All SOQs and materials submitted in response to this RFQ shall become the County's property and are subject to disclosure under the Public Records Act, California Government Code Sections 6250, *et seq.* This RFQ, and all SOQs submitted in response hereto, are considered public information, except for specifically identified trade secrets, which will be handled according to any and all applicable local, state and federal laws and regulations. Any portion of a SOQ that is deemed to be a trade secret by the Consultant shall be clearly marked "PROPRIETARY INFORMATION" at the top of the page in at least one-half inch (1/2") letters. Specifically identified proprietary information will not be released, if the Consultant agrees to indemnify and defend the County in any action brought to disclose such information. By submitting a SOQ in response to this RFQ, the Consultant agrees that the County's failure to contact the Consultant prior to the release of any proprietary information contained therein will not be a basis for liability by the County or any employee thereof.

6.7 Expenses Incurred in Preparing Statements of Qualifications:

The County accepts no responsibility for, and shall not pay any costs resulting from, or associated with, a Consultant’s participation in this RFQ process, including, without limitation, the preparation and presentation of a SOQ.

6.8 Right to Reject Statements of Qualifications:

The County reserves the unqualified right to reject any and all SOQs or to waive, at its sole discretion, any irregularity, which the County deems reasonably correctable or otherwise not warranting rejection of a SOQ.

7.0 REQUIRED FORMAT OF STATEMENTS OF QUALIFICATIONS:

7.1 General Instructions and Information:

A. Content Requirements. In order for SOQs to be considered for award of a Consultant Services Agreement pursuant to this RFQ process, the following conditions must be satisfied:

1. SOQs must be submitted in accordance with the standards and specifications set forth in this RFQ and contain all required attachments, including, without limitation, a signed and completed Signature Affidavit.
2. SOQs must be complete and specific unto themselves. For example, “*See Enclosed Brochure*” will not be considered an acceptable response.
3. SOQs must contain information which enables the County to evaluate the Consultant’s ability to provide the Services set forth in this RFQ.
4. All information, statements, letters and other documentation and attachments required by this RFQ must be included with the SOQ.
5. Receipt of all Addenda to this RFQ, if any, must be acknowledged on the bottom of the Signature Affidavit sheet attached to the SOQ.

B. Presentation Requirements. In order for SOQs to be considered for award of a Consultant Services Agreement pursuant to this RFQ process, the following conditions must be satisfied:

1. SOQs must be bound or contained in loose leaf binders. However, costly bindings, color plates, glossy brochures, etc. are not necessary or recommended.
2. SOQs must be uniformly typed in twelve (12) point font on standard eight and one-half (8.5) by eleven (11) inch white paper, single or double sided, with:
 - a. Each section and subsection clearly titled;
 - b. Each page consecutively numbered, including all attachments;
 - c. Each page having one (1) inch margins; and
 - d. Each page being clean and suitable for copying.

3. SOQs must not be any more than seventy-five (75) pages in length inclusive of cover page, table of contents and section separators. SOQs exceeding such maximum page length may be rejected by the County.

C. **Formatting Requirements.** In order to be considered for award of a Consultant Services Agreement pursuant to this RFQ process, SOQs shall include all of the sections set forth below. Failure to follow this format may result in the rejection of the SOQ.

- 1.0 Introductory Letter
- 2.0 Signature Affidavit
- 3.0 Table of Contents
- 4.0 Business Profile
- 5.0 Quality Assurance Capabilities
- 6.0 References
- 7.0 Supplemental Documentation
- 8.0 Evidence of Insurability and Business Licenses
- 9.0 Exceptions, Objections and Requested Changes
- 10.0 Required Attachments

7.2 **Introductory Letter:**

The introductory letter shall, in one (1) page or less, summarize Consultant’s qualifications and experience regarding the provision of the Services set forth in this RFQ. The introductory letter must provide the Consultant’s current contact information, list any subconsultants that may be used to provide the Services set forth in this RFQ and identify where such Services will be performed. The introductory letter shall be signed in blue ink by an authorized representative of the Consultant.

7.3 **Signature Affidavit:**

Each SOQ must contain a signed and completed Signature Affidavit, which is attached to this RFQ as Attachment C – Signature Affidavit and incorporated herein by reference as if set forth in full. The Signature Affidavit must be signed by an authorized representative of the Consultant. Signature authorization on the Signature Affidavit shall constitute a warranty, the falsity of which shall entitle the County to pursue any and all remedies authorized by law. Receipt of all Addenda, if any, must be acknowledged on the bottom of the Signature Affidavit.

7.4 **Table of Contents:**

SOQs shall include a comprehensive table of contents that identifies submitted material by sections 1.0 through 10.0 listed above and any subsections thereof with sequential page numbers.

7.5 **Business Profile:**

SOQs shall include a clear and concise narrative which identifies the ability of the Project Team (led by the Consultant) to provide the Services set forth in this RFQ.

- A. **Company Overview.** The Business Profile must include an overview of the business structure and operation of the Consultant’s firm. The company overview should include, at a minimum, all of the following items:

1. The Consultant’s business name, physical location, mission statement, legal business status and current staffing levels.
 2. A detailed description of the Consultant’s current and previous business activities, including, without limitation:
 - a. The history of the Consultant’s firm, including the date when the firm was founded and how innovation and high-quality performance is fostered thereby.
 - b. The number of years the Consultant has been operating under the present business name and any prior business names under which the Consultant has provided services equivalent to those set forth in this RFQ.
 - c. The number of years the Consultant has been providing services equivalent to those set forth in this RFQ.
 - d. The total number of government agencies for which the Consultant has provided services equivalent to those set forth in this RFQ.
 3. A detailed description of any litigation regarding the provision of services equivalent to those set forth in this RFQ that has been brought by or against the Consultant, including the nature and result of such litigation, if applicable.
 4. A detailed description of any fraud convictions related to public contracts, if applicable.
 5. A detailed description of any current or prior debarments, suspension or other ineligibility to participate in public contracts, if applicable.
 6. A detailed description of any violations of local, state and/or federal industry or regulatory requirements, if applicable.
 7. A detailed description of any controlling or financial interest the Consultant has in any other firms or organizations, or whether the Consultant’s firm is owned or controlled by any other firm or organization. If the Consultant does not hold a controlling or financial interest in any other firms or organizations, that must be stated.
- B. Overview of Qualifications and Experience.** The Business Profile must include an overview of the Project Team’s qualifications and experience regarding the provision of services equivalent to those set forth in this RFQ. The overview of qualifications and experience should include, at a minimum, all of the following items:
1. Identification of the Project Team, including, without limitation, an organizational chart which identifies all key personnel and subconsultants that will be responsible for providing Services set forth in this RFQ.
 2. The number of staff members employed by each subconsultant included in the Project Team that are currently providing services equivalent to those set forth in this RFQ.
 3. A detailed description of the Project Team’s overall experience in providing services equivalent to those set forth in this RFQ.

4. A detailed description of the qualifications and experience of each Project Team member regarding the provision of services equivalent to those set forth in this RFQ, including, without limitation, job titles, responsibilities, special training and licenses.
5. A detailed description of any litigation regarding the provision of services equivalent to those set forth in this RFQ that has been brought by or against any subconsultant, including the nature and result of such litigation, if applicable.
6. A detailed description of any fraud convictions related to public contracts, if applicable.
7. A detailed description of any current or prior debarments, suspension or other ineligibility to participate in public contracts, if applicable.
8. A detailed description of any violations of local, state and/or federal industry or regulatory requirements, if applicable.

7.6 Quality Assurance Capabilities:

- A. **Description of Services.** SOQs shall include an overview of how the Services provided by the Project Team will comply with the requirements set forth in this RFQ and the sample Consultant Services Agreement attached hereto. The description of services portion of the SOQ should include, at a minimum, all of the following items:
 1. A detailed description of each Project Team member's role and responsibilities regarding the provision of the Services set forth in this RFQ.
 2. A detailed description of any Services set forth in this RFQ that will not be included in the Services provided by the Project Team and the reason for the exclusion thereof.
 3. A detailed description of any and all procedural techniques that the Project Team will utilize in order to add value to the Services set forth in this RFQ.
- B. **Project Understanding and Quality Control.** SOQs must include an overview of the Consultant's policies and procedures regarding quality control. The quality control overview should include, at a minimum, all of the following items:
 1. A detailed description of the Consultant's understanding of the requirements, challenges and potential hurdles applicable to the provision of the Services set forth in this RFQ.
 2. A detailed description of the quality control strategies that will be utilized by the Consultant in order to achieve the goals and objectives of the project in an efficient manner.
 3. A detailed description of the Consultant's management expertise and approach, and how such expertise and approach will assure staff and Project Team continuity and timely provision of the Services set forth in this RFQ pursuant to the terms and conditions of a final Consultant Services Agreement.
 4. A detailed description of the expected communication channels between the Consultant's staff and the County to ensure that the Services set forth in this RFQ will be performed to the County's satisfaction, including, without limitation, how potential problems will

be resolved.

7.7 **References:**

- A. **Reference Data Sheet.** SOQs shall include a minimum of three (3) Reference Data Sheets, which is attached hereto as Attachment C – Data Reference Sheet and incorporated herein by reference as if set forth in full, containing present and past performance information from a minimum of three (3) and maximum of five (5) former clients, preferably government agencies, to whom the Consultant has provided services equivalent to those set forth in this RFQ within the past five (5) years.
- B. **Required Information.** The information provided with each reference must be clearly correlated to the Services and responsibilities set forth in this RFQ. Each reference must include, at a minimum, all of the following information:
1. The name, physical address, email address and telephone number for the current contact person of each referenced client.
 2. The dates of project commencement and completion for each referenced client.
 3. A detailed description of the services performed for each referenced client, including, without limitation, the time period in which such services were delivered.
 4. A detailed description of how the services provided by the Consultant led to accomplishment of each referenced client's project objectives.
 5. Project details including the initial construction budget amount and final construction cost (including all change orders) of each referenced client's project.
 6. A detailed description of the project, including building area, construction type, project site & setting (urban, suburban or rural), and any other pertinent details. A separate sheet including this information and images of the work may be included.
 7. A verification that all information provided in the Reference Data Sheet is true and correct to the best of the Consultant's knowledge.

7.8 **Supplemental Documentation:**

SOQs shall include a detailed description of any and all reports, drawings, studies, invoices and any other pertinent documents, that may be prepared and/or used to provide the Services set forth in this RFQ pursuant to the terms and conditions of a final Consultant Services Agreement. Examples of each document described in the documentation section of the SOQ may be attached thereto.

7.9 **Evidence of Insurability and Business Licenses:**

All Consultants shall submit evidence of eligibility for all insurances required by the sample Consultant Services Agreement that is attached hereto as Attachment D – Sample Consultant Services Agreement and incorporated herein by reference as if set forth in full. Upon the award of a final Consultant Services Agreement, the Successful Consultant will have ten (10) calendar days to produce certificates of the required insurance, including a certified endorsement naming the

County as an additional insured. However, Consultants should not purchase additional insurance until a final Consultant Services Agreement has been awarded by the County. In addition, all Consultants shall certify the possession of any and all licenses and/or certifications required for the provision of the Services set forth in this RFQ.

7.10 Exceptions, Objections and Requested Changes:

Consultants should carefully review the terms and conditions of this RFQ. Any exceptions, objections or requested changes to this RFQ, and/or the sample Consultant Services Agreement attached hereto, shall be clearly explained in the SOQ with supporting rationale. Descriptions of any exceptions, objections or requested changes should include the page and paragraph number of the referenced portion of this RFQ and/or the sample Consultant Services Agreement attached hereto. Protests based on any exception, objection or requested change to this RFQ, and/or sample Consultant Services Agreement attached hereto, shall be considered waived and invalid by the County if the exception, objection or requested change is not clearly explained in the SOQ.

7.11 Required Attachments:

SOQs that do not contain each of the following attachments will be considered nonresponsive and rejected by the County:

- **Signature Affidavit** (See Section 7.3)
- **Reference Data Sheets** (See Section 7.7)
- **Supplemental Documentation** (See Section 7.8)

Please format your SOQ according to the sections listed in section 7.1.C. The Signature Affidavit and Reference Data Sheet need to use the forms as provided as attachments to the RFQ. The Supplemental Documentation section needs to be included as stipulated in the RFQ but does not have a preset format. Consultants are encouraged to highlight documents in the Supplemental Documentation section that are unique to their practice or particularly relevant to the completion of the Project.

8.0 MODIFICATION AND CORRECTION:

8.1 Requests for Clarification or Correction:

Consultants shall be responsible for meeting all of the requirements and specifications set forth in this RFQ. If a Consultant discovers any ambiguity, conflict, discrepancy, omission or other error in this RFQ, a written request for clarification or correction should be submitted to the County at the following address:

COUNTY: Humboldt County Department of Public Works – Facilities Management Division
Attention: Jake Johnson, Construction Projects Manager
1106 Second Street
Eureka, California 95501
Email: jbjohnson@co.humboldt.ca.us

Requests for clarification or correction and any other questions pertaining to this RFQ must be received by the County before **5:00 p.m. PST on March 21, 2024**. All responses to such requests for clarification or correction and written questions shall be issued by the County on or before **March 25, 2024**.

8.2 **Addenda:**

Any modifications to this RFQ shall be made by written Addenda. Addenda to this RFQ, if necessary, will be distributed via mail, email or facsimile to all Consultants by the County and will be posted on the County's website. Addenda issued by the County interpreting or modifying any portion of this RFQ shall be incorporated into the Consultant's SOQ, if possible. The Addenda Cover Sheet shall be signed and dated by the Consultant and submitted to the County with the SOQ. Any oral communications concerning this RFQ by County personnel are not binding on the County, and shall in no way modify this RFQ or the obligations of the County or any Consultants.

9.0 **EVALUATION CRITERIA AND REVIEW PROCESS:**

After SOQs are received and opened pursuant to requirements set forth herein, the County will review and evaluate all SOQs for responsiveness to this RFQ, in order to determine whether the Consultant possesses the qualifications necessary for the satisfactory performance of the Services set forth in this RFQ. In evaluating the SOQs, the County will employ a one hundred (100) point competitive evaluation system with consideration given to each of the following categories:

- **Relevant and Comparable Experience – 30 points:** The Consultant's experience in providing services equivalent to those set forth in this RFQ for government agencies of comparable size.
- **Staffing Levels – 30 points:** The Consultant's ability to provide key personnel familiar with providing services equivalent to those set forth in this RFQ.
- **Location – 10 points:** The Consultant's ability to provide capable, competent and experienced staff from offices located in or near Humboldt County.
- **Ability to Provide High-Quality Services – 30 points:** The overall impression of the Consultant's ability to provide the Services set forth in this RFQ.

All SOQs will be evaluated by an RFQ Evaluation Committee made up of County staff members and other parties that have expertise or experience in the types of services set forth in this RFQ. The RFQ Evaluation Committee may directly request clarification of SOQs from, and/or conduct interviews with, one (1) or more Consultants. The purpose of any such requests for clarification or interviews shall be to ensure the RFQ Evaluation Committee's full understanding of the SOQs. If clarifications are made as a result of such discussions, the Consultant shall put such clarifications in writing. Any delay caused by a Consultant's failure to respond to direction from the County may lead to rejection of the SOQ.

The evaluation and selection process is designed to award the procurement to the Consultant with the best combination of attributes based upon the above-referenced evaluation criteria. Accordingly, SOQs will be evaluated against the evaluation criteria set forth in this RFQ and not against other SOQs. The award of a final Consultant Services Agreement, if made by the County, will be based upon a total review and evaluation of each SOQ.

All contacts made with the County during the evaluation and selection process shall be through Humboldt County Public Works Construction Projects Manager, Jake Johnson (see Section 8.1 for contact information). Attempts by a Consultant to contact any other representative of the County during the evaluation and selection process may lead to rejection of the SOQ. Conflict resolution shall be handled

by County staff upon receiving a written statement from the Consultant about this RFQ process.

10.0 CONTRACT DEVELOPMENT:

10.1 Contract Negotiation Process:

Once the evaluation and selection process set forth in this RFQ has been completed, the County will notify the Consultants of the final rankings, and negotiate the terms and conditions of the final Consultant Services Agreement with the highest-ranking Consultant. The highest-ranking Consultant shall participate in the contract negotiation process in accordance with direction from the County. Any delay caused by the Consultant's failure to participate in good faith contract negotiations may lead to rejection of the Proposal. The contract negotiation process shall include, without limitation, all of the following:

- A. **Scope of Services and Project Schedule.** The highest-ranking Consultant will be asked to submit a proposed scope of services and project schedule within five (5) business days after receiving notification of the final rankings. After further discussion with County staff regarding roles, responsibilities, tasks and work products, the final scope of services and project schedule will be incorporated into the final Consultant Services Agreement resulting from this RFQ process.
- B. **Cost Proposal.** The highest-ranking Consultant will also be asked to submit a sealed cost proposal for the provision of Services equivalent to those set forth in this RFQ. In order for a cost proposal to be accepted by the County, all of the following conditions must be satisfied:
 - 1. The cost proposal must include a lump sum fee structure that is organized into clearly defined project phases covering all necessary and anticipated services to be provided by the Project Team.
 - 2. The cost proposal shall include an itemized list of the costs for each project phase set forth in the proposed scope of services, including, without limitation, staffing levels and hourly rates that may be applicable to additional services.
 - 3. The maximum amount payable for the provision of Services equivalent to those set forth in this RFQ is currently estimated to be One Million Five Hundred Thousand Dollars (\$1,500,000.00). The final cost for the provision of Services equivalent to those set forth in this RFQ will be negotiated between the County and the highest-ranking Consultant.
- C. **Scoping Meeting.** The highest-ranking Consultant will be asked to attend a scoping meeting within ten (10) business days after receiving notification of the final rankings to review the proposed scope of services, project schedule and cost proposal to ensure that the Consultant has a full understanding of the terms, conditions and requirements that will be included in the final Consultant Services Agreement resulting from this RFQ process. The Scoping meeting will also provide the highest-ranking Consultant with an opportunity to ask technical questions regarding the Services that it will be required to provide pursuant to the terms and conditions of the final Consultant Services Agreement resulting from this RFQ process.

10.2 Award of Consultant Services Agreement:

If the County determines, after the completion of the contract negotiation process, to award a contract for the provision of the Services equivalent to those set forth in this RFQ, the final

Consultant Services Agreement shall be sent to the Successful Consultant for signature. Once a signed copy has been returned to the County, the final Consultant Services Agreement will be submitted to the Humboldt County Board of Supervisors for review and approval. The County hereby reserves the right to award a Consultant Services Agreement to the Consultant which, in the sole judgment of the County, meets the County’s objective of completing the Project in a timely and effective manner. No Proposal shall be binding upon the County until a final Consultant Services Agreement is signed by duly authorized representatives of both the Successful Consultant and the County.

10.3 **Contractual Requirements:**

- A. **Term.** The final Consultant Services Agreement resulting from this RFQ process is anticipated to begin in April, 2024 and shall remain in full force and effect for a period of 33 months, unless sooner terminated or extended as set forth therein. The County shall have the right to extend the term of, and increase the maximum amount payable under, the final Consultant Services Agreement resulting from this RFQ process, via duly executed amendments thereto, based on the availability of funds.
- B. **Termination for Cause.** If, in the County’s opinion, the Successful Consultant fails to adequately provide the agreed upon Services within the applicable timelines or otherwise fails to comply with the terms and conditions set forth in the final Consultant Services Agreement resulting from this RFQ process, or violates any local, state or federal law, regulation or standard applicable to its performance thereunder, the County may immediately terminate the Consultant Services Agreement or reduce the amount of compensation to be paid to the Successful Consultant pursuant to the terms and conditions thereof.
- C. **Termination without Cause.** The County may terminate the final Consultant Services Agreement resulting from this RFQ process without cause upon thirty (30) days advance written notice.
- D. **Termination due to Insufficient Funding.** The County’s obligations under the final Consultant Services Agreement resulting from this RFQ process shall be contingent upon the availability of local, state and/or federal funds. In the event such funding is reduced or eliminated, the County shall, in its sole discretion, have the right to terminate the final Consultant Services Agreement resulting from this RFQ process upon seven (7) days advance written notice.
- E. **General Reporting Requirements.** In connection with the execution of the final Consultant Services Agreement resulting from this RFQ process, the Successful Consultant will be required to provide the County with any and all reports that may be required by any and all local, state and/or federal agencies. Any and all reports required pursuant to the terms and conditions of the final Consultant Services Agreement resulting from this RFQ process shall be prepared using the format required by the State of California, as appropriate, and be submitted in accordance with any and all applicable local, state and federal timeframes and accessibility requirements.
- F. **Preparation and Maintenance of Performance and Financial Records.** In connection with the execution of the final Consultant Services Agreement resulting from this RFQ process, the Successful Consultant will be required to prepare accurate and complete, performance and financial records, documents and other evidence relating to the provision of Services equivalent to those set forth herein, and to maintain and preserve said records for at least three

(3) years from the date of final payment under the final Consultant Services Agreement, or as otherwise required by any and all applicable local, state and federal laws, regulations, policies, procedures, guidelines and standards, except that if any litigation, claim, negotiation, audit or other action is pending, the records shall be retained until completion and resolution of all issues arising therefrom.

- G. Inspection of Performance and Financial Records.** In connection with the execution of the final Consultant Services Agreement resulting from this RFQ process, the Successful Consultant will be required to make any and all, performance and financial records, documents and other evidence relating to the provision of Services equivalent to those set forth herein available during normal business hours to inspection, audit and reproduction by the County and any other duly authorized local, state and/or federal agencies, including, without limitation, the California Department of Public Health and the California State Auditor's Office. The Successful Consultant will also be required to allow interviews of any of its employees who might reasonably have information related to such records by the County and any other duly authorized local, state and/or federal agencies.
- H. Project Monitoring.** In connection with the execution of the final Consultant Services Agreement resulting from this RFQ process, the County will have the right to monitor any and all activities related to the provision of Services equivalent to those set forth herein, including, without limitation the right to review and monitor the Successful Consultant's records, policies, procedures and overall business operations, at any time, in order to ensure compliance with the terms and conditions of the final Consultant Services Agreement. The Successful Consultant shall be required to cooperate with a corrective action plan, if deficiencies in its records, policies, procedures or business operations are identified by the County. However, the County shall in no way be responsible, or held accountable, for overseeing or evaluating the adequacy of the Successful Consultant's performance.
- I. Disclosure of Confidential Information.** In connection with the execution of the final Consultant Services Agreement resulting from this RFQ process, the Successful Consultant will be required to protect any and all confidential information obtained pursuant to the terms and conditions thereof in accordance with any and all applicable local, state and federal laws, regulations, policies, procedures, guidelines and standards.
- J. Non-Discrimination Compliance.** In connection with the execution of the final Consultant Services Agreement resulting from this RFQ process, the Successful Consultant will be required to comply with any and all applicable provisions of: Title VI and Title VII of the Civil Rights Act of 1964; Section 504 of the Rehabilitation Act of 1973; the Age Discrimination Act of 1975; the Food Stamp Act of 1977; Title II of the Americans with Disabilities Act of 1990; the California Fair Employment and Housing Act; California Civil Code Sections 51, *et seq.*; California Government Code Sections 4450, *et seq.*; California Welfare and Institutions Code Section 10000; United States Executive Order 11246, as amended and supplemented by United States Executive Order 11375 and 41 C.F.R. Part 60; and any other applicable local, state or federal laws, regulations and standards, all as may be amended from time to time.
- K. Nuclear-Free Humboldt County Ordinance Compliance.** In connection with the execution of the final Consultant Services Agreement resulting from this RFQ process, the Successful Consultant will be required to certify that it is not a Nuclear Weapons Contractor, as that term is defined by the Nuclear-Free Humboldt County Ordinance. The County shall have the right to immediately terminate the final Consultant Services Agreement resulting from this RFQ process if it is determined that the Successful Consultant falsified the above-referenced

certification or subsequently becomes a Nuclear Weapons Contractor.

- L. Indemnification Requirements.** In connection with the execution of the final Consultant Services Agreement resulting from this RFQ process, the Successful Consultant will be required to hold harmless, defend and indemnify the County and its agents, officers, officials, employees and volunteers from and against any and all claims, demands, losses, damages, liabilities, expenses and costs of any kind or nature, including, without limitation, attorney fees and other costs of litigation, arising out of, or in connection with, the Successful Consultant's negligence, recklessness or willful misconduct in the performance of the Services required pursuant to the terms and conditions of the final Consultant Services Agreement, except such loss or damage which was caused by the sole negligence or willful misconduct of the County.
- M. Insurance Requirements.** In connection with the execution of the final Consultant Services Agreement resulting from this RFQ process, the Successful Consultant will be required to maintain in full force and effect, at its own expense, any and all appropriate comprehensive general liability insurance, comprehensive automobile insurance, workers' compensation and professional liability policies. The Successful Consultant shall furnish the County with certificates and original endorsements effecting any and all required insurance coverage prior to the County's execution of the final Consultant Services Agreement resulting from this RFQ process.
- N. Compliance with Applicable Laws and Licensure Requirements.** In connection with the execution of the final Consultant Services Agreement resulting from this RFQ process, the Successful Consultant will be required to comply with any and all local, state and federal laws, regulations, policies, procedures, guidelines and standards applicable to the provision of Services equivalent to those set forth herein. In addition, the Successful Consultant will be required to comply with any and all applicable local, state and federal licensure, certification and accreditation requirements.
- O. Prevailing Wage Requirements.** In connection with the execution of the final Consultant Services Agreement resulting from this RFQ process, the Successful Consultant, and its subconsultants, shall be responsible for complying with any and all applicable local, state and federal wage requirements, including, without limitation the prevailing wage requirements set forth in California Labor Code, Sections 1770, *et seq.* California State Prevailing Wage information is available at the following California Department of Industrial Relations websites:
- http://www.dir.ca.gov/OPRL/FAQ_PrevailingWage.html
 - <http://www.dir.ca.gov/oprl/DPreWageDetermination.html>
- P. Jurisdiction and Venue.** The final Consultant Services Agreement resulting from this RFQ process shall be governed in all respects by the laws of the State of California. Any disputes related to the terms and conditions of the final Consultant Services Agreement resulting from this RFQ process shall be litigated in the State of California, and venue shall lie in the County of Humboldt unless transferred by court order pursuant to California Code of Civil Procedure Sections 394 or 395.
- Q. Assignment.** The final Consultant Services Agreement resulting from this RFQ process shall not be assignable by the Successful Consultant without prior approval from the County.

11.0 CANCELLATION OF THE RFQ PROCESS:

The County hereby reserves the right to cancel this RFQ process at any time after the issuance of this RFQ, but prior to the award of a final Consultant Services Agreement, if the County determines, in its sole discretion, that cancellation is in the County’s best interests for reasons, including, but not limited to, the following: the Services set forth in this RFQ are no longer required; the SOQs did not independently arrive in open competition, were collusive or were not submitted in good faith; or the County determines, after review and evaluation of the SOQs, that the County’s needs can be satisfied through an alternative method.

The County reserves the right to amend or modify the preliminary scope of services set forth in this RFQ prior to the award of a final Consultant Services Agreement, as necessity may dictate, and to reject any and all SOQs received in response hereto. This RFQ does not commit the County to award a Consultant Services Agreement for the provision of the Services set forth in this RFQ or to pay any costs incurred in the preparation of any SOQs.

END OF RFQ - ATTACHMENTS TO RFQ BEGIN NEXT PAGE

**REQUEST FOR QUALIFICATIONS – NO. DPW2024-002
PROFESSIONAL ARCHITECTURE AND ENGINEERING SERVICES
FOR THE PUBLIC HEALTH LABORATORY REPLACEMENT PROJECT**

ATTACHMENT A – PRELIMINARY PROGRAM & BUDGET
PROJECT NUMBER 170256

PROJECT NEED

The existing Humboldt County Public Health Laboratory at 529 I Street in Eureka plans to modernize and consolidate into an efficient new single facility at a new location. This new facility will serve the needs of the County into the future by incorporating advanced molecular detection with genomic sequencing testing along with its other testing processes in a cohesive manner. The intent of this document is to describe the proposed project and provide a project brief for the selection of a design team.

The Humboldt County Public Health Laboratory provides laboratory testing services and support for community health providers to aid in the diagnosis and control of communicable diseases and promote a healthy environment. The laboratory also plays a key role in emergency preparedness by providing testing services, training, and support for area laboratories.

The County's existing lab facility is currently distributed in 3 distinct and separate areas of an existing 1938 structure which presents practical and programmatic challenges to adding services and upgrading the lab. The main laboratory is located on the second floor of the existing building and consists of a BSL2 lab and office space. A BSL 3 lab is located in an aging modular building in the parking lot adjacent to the main building. An auxiliary lab space is located on the main floor adjacent to the alleyway and is used for intake, inventory and pre-processing purposes. Additional spaces used in the building include storage, office space, and other common core functions. Efficiency of lab operations due to the distributed nature of the lab areas has made upgrades to the laboratories processes and procedures difficult. Maintenance of these aging facilities has also become a major issue.

The County has undertaken a preliminary programming effort to help define the project needs. The information contained herein incorporates the existing and anticipated future uses, as well as other data and information pertaining to the project and site to assist with project design and completion. The selected design team shall undergo further work based on this preliminary programming to validate the data with lab staff and Public Health leadership and flesh-out the full program prior to proceeding with schematic design.

PROJECT OUTLINE

The County desires to design and construct a new stand-alone two-story public health laboratory building of approximately 10,000 s.f., on County-owned land located in Eureka, California. The new facility's primary purpose will be to house new BSL-2 and BSL-3 laboratory spaces and associated office space with an emphasis on implementing advanced molecular detection (AMD) processes for County Public Health Laboratory staff.

The site will be designed to include hardscape and landscaped exterior areas and site improvements including parking, fencing, stormwater mitigation and flatwork as necessary to construct a new facility for use by Public Health Department laboratory staff.

The project will be a fully sprinklered type-VA building and may include, without limitation, all of the following: concrete; masonry; metals; carpentry; casework; thermal and moisture protection; doors and windows; finishes; specialties; elevator; lab furnishings and equipment (as determined by staff and design

team); electrical; plumbing; mechanical; heating, ventilation, and air conditioning; security systems; site improvements; fencing; site utilities; supplemental photovoltaic (solar) power and storage; emergency power; and fire protection systems.

- Proposed new structure to be approximately 7,000-10,000 square feet, and 28’-36’ high.
- Approximate number of staff: 15-20, including lab staff and administration.
- Design shall conform to applicable standards for BSL-2 & BSL-3 laboratory spaces including all associated mechanical, electrical and plumbing systems using the Biosafety in Microbiological and Biomedical Laboratories (BMBL) guidelines published by the CDC and NIH, the NIH Design Requirements Manual, and the APHL Laboratory Facilities Construction and Major Renovations Guidelines.
- Design shall conform to the setback, height, and size requirements of the City of Eureka Zoning Code.
- Design shall conform to all applicable provisions of the California Code of Regulations, Title 24.
- Design shall conform to all applicable federal ADA standards and guidelines, and State of California accessibility codes and standards.

For additional information, see attached Predesign Space Programming spreadsheet (Exhibit 1 to this Attachment) and Preliminary Bubble Diagram (Exhibit 2 to this Attachment) for additional information.

Preliminary Project Schedule:

The anticipated project schedule is shown below beginning at award of design agreement:

Task	Period	Tentative Date
• Predesign	2 months	June-July 2024
• Schematic Design	3 months	August-October 2024
• Design Development	3 months	November 2024-January 2025
• Construction Documents	4 months	February 2025-May 2025
• Permitting & Approvals	3 months	June-August 2025

Project pause may be necessary if construction funding is required to be secured.

• Bidding & Award	3 months	September-November 2025
• Construction	12 months	December 2025- December 2026
• Closeout	1 month	January 2027

Preliminary Project Construction Budget:

The initial construction budget for this project has been estimated to be approximately \$10.5M based on the likely square footage, initial cost per s.f., other site specific factors, and escalation to bid and to midpoint of construction.

Preliminary Project Budget				
Description	Quantity	Unit	Unit Cost	Notes
Preliminary Construction Cost	1	LS	\$ 9,000,000	(Assume 10,000 s.f @ \$900/s.f.)
2024 Escalation	7.0%	%	\$ 630,000	Estimated escalation. Reality may differ.
2025 Escalation	6.0%	%	\$ 577,800	
2026 (1/2 year) Escalation	2.5%	%	\$ 255,195	
Preliminary Hard Construction Cost TOTAL			\$ 10,462,995	Estimated total. Construction cost estimating to be performed at each design phase.

Due to the current economic climate, this estimated figure may need to be adjusted during the course of design. Cost estimating shall be performed by the Design Team at each phase of the project. Grant funding has been received by the County which is providing the initial funding for design of the project and a portion of construction, while additional funding avenues are being pursued for the remainder of projected construction costs.

The County is proceeding with design of this project in order to have a “shovel-ready” project to enhance funding opportunities. This may require a pause at the completion of the construction documents phase to allow for securing additional funding for construction.

Primary Goal for New Facility:

Modernize and consolidate lab functions into an efficient new facility with an emphasis on incorporating advanced molecular detection with genomic sequencing testing with its other functions in a cohesive manner.

Facility Access and Security:

Access for Public/Staff:

The facility is planned to primarily be used by County Public Health staff. Public access will be limited to drop-offs of materials for testing, and occasional training for partner organizations in a conference room. Access for the public will mainly occur via street/sidewalk access. One designated courier vehicle parking stall and one for client sample drop-off will be provided in the off-street parking area. Vehicular delivery of supplies, equipment and other goods necessary for the functioning of the facility will take place in the parking area and have direct access into the building’s warehouse area.

Facility Security and Access Levels:.

Level 1: Public access through exterior doorways will be granted by staff. Staff security is the main driver of this level of security. **Level 2:** Access into staff office areas off lobby will only be available through swipe card access. HIPPA and staff safety are the main drivers of this level of security. **Level 3:** Access into the main BSL-2 lab space will be available through restricted swipe card access. HIPPA and personnel safety are the main drivers of security in this area of the facility. **Level 4:** Access into the BSL-3 lab space will be available through restricted swipe card access. Materials in this area of the facility require a high level of security that comply with LRN-B security recommendations. **Other:** Rabies Storage area access from exterior for 24/7 drop-off by partner agency of materials for testing will be via key/keypad/etc. (?). Access into main lab area via this space will be equivalent to Level 3 access.

Form:

Goal: To inspire public trust and to project openness without inviting unnecessary public interaction with this important piece of infrastructure while integrating into the urban fabric of the neighborhood. The new facility should fit into the neighborhood in scale, form and finishes while being low maintenance and use building form and siting to maximize sustainability through access to natural light for interior spaces, and solar PV access. The site for the new facility is in a transitional neighborhood area bounded by residential, office and government uses. Effort shall be made to integrate mechanical elements into the design of the building so they are either masked from view, or are part of a cohesive whole and not simply amended to the face or roof of the new structure.

The County wishes to abide by the City of Eureka Zoning Code for design of this new facility. The project will be brought before the City of Eureka’s design review committee for review and input, but approval will not be required as the County (as owner) is a separate governmental entity.

Function:

Goal: Expand use of lab to focus on AMD with genomic sequencing testing. Provide a facility that prioritizes and facilitates teamwork amongst all staff.

Entry: The main public entry will be limited in size and provide secured access into staff areas. A public lobby will be connected to an area for drop-off of samples and a conference room.

Staff offices: Office areas will be arranged around an open office area including several desks/cubicles and a copy/print workstation. Private & shared enclosed offices will open onto and be accessed through this space. Staff restrooms and break room shall be located in an area visually separated from the office areas. Natural light is desired in these spaces.

Lab: In general, the main BSL-2 lab is to be organized around a central flexible open area with multiple benches. The more specialized enclosed lab spaces shall be located around the perimeter of and accessed through the open lab area. The BSL-3 lab will also be accessed through the open lab area, with a secure anteroom providing access to two secure lab spaces.

Service spaces: Aside from circulation (including stairs and elevator), the facility will be provided with restrooms, including a staff restroom with a shower. A lab-utility space for CO2 storage & distribution, DI water generator, a vacuum pump and other lab-specific services will be provided. A small warehouse area will be provided with good access to the exterior to receive and store bulk consumables and accept equipment deliveries. An IT/Communications room will be provided, as well as a lockable file-room for deep storage of mandated paper documentation for a period of 5-years.

Site/Exterior: Provide parking area to meet City of Eureka standards, including bicycle parking requirements. Emergency power systems, recycling & trash and other utilities will be accounted for on the exterior as well. The parking area shall be screened/fenced and gated. Solar access shall be taken advantage of for PV and appropriate natural lighting inside the new facility.

Economy:

Goal: Construct a facility prioritizing quality, adaptability, ease of maintenance and low operating cost over initial cost.

The high humidity marine climate of Eureka makes upkeep of buildings difficult. The installation details and methods for mechanical equipment, ferrous metals and other building elements prone to deterioration as a result of salty moist air should be given special consideration. This includes making replacement of mechanical units, coils, filters, and other lab and utility equipment easily achievable.

Time:

Goal: Construct a facility which will be adaptable to future changes in processes and program.

Program growth is not expected to exceed 10% over the next 30 years with regard to the amount of testing performed, staffing, and associated space needs, however changes to the processes and procedures are likely to occur with new emergent diseases, and technological advancement of the equipment used. Lab spaces shall be designed to account for current processes but make those spaces adaptable to future changes.

SITE & ZONING DATA

Site Information:

The project site is a generally flat corner lot located at 3007 & 3015 I Street in Eureka, California. The two existing properties will be merged into a single parcel. The overall site will be approximately 120'-0" x 122'-6". I Street, to the west of the site, is a busy one-way street and an important connector within the City of Eureka. Wood Street to the north of the property is a smaller two-way side street. There is street parking at both streets adjacent to the site. A 15-foot-wide ingress, egress and access road easement is recorded along the eastern property line for the purpose of servicing cell towers on the adjacent property. Two small medical offices occupy the lots to the south of the site. Across I Street to the west is another County-owned property, known as the "Clark Complex." This facility contains a number of County programs including the Coroner, Planning & Building and Mental Health facilities and offices.

There is an existing dilapidated single-family residence on the site which the County is in the process of demolishing. Once complete, the County will provide a survey of the site, and a geotechnical study for the use of the design team.

See attached Pre-design Site drawings PD-1 through PD-4 for site and zoning data (Exhibit 3 to this Attachment).

Entitlements, Permitting, and Outside Agency Coordination:

CEQA: Notice of Exemption for site/project has been filed and processed by Humboldt County Public Works.

Planning & Design Review: The County has had a pre-development conference with the City of Eureka. Following the conference, the City's Planning Commission passed a resolution determining that the proposed project is in conformance with the City's General Plan. Although not bound by the City of Eureka's zoning code, the County desires to abide by the City's applicable zoning regulations and standards for this project. An informational design review presentation through the City's Design Review Committee to solicit feedback on the application of the standards will be conducted.

Building Code Review: Plan review/permitting will be provided through the Humboldt County Building Department and their outside plan review consultants. The County will arrange for outside plan review firm to provide preliminary "over-the-counter" review services at early stages of design.

ADA & Accessibility Review: Review of project accessibility will be an important part of the design process. In addition to regular plan review, accessibility review will be provided through a County-provided CASp reviewer/inspector. Preliminary "over-the-counter" review and consulting will be available to be provided at early stages of design. This reviewer will also provide on-site inspection during construction to confirm accessibility of the built project.

Utility and site design coordination: Coordination with the following agencies and utility providers will be required by the design team as a part of the project: City of Eureka, Humboldt Bay Fire District, Pacific Gas & Electric, Optimum (Cable & internet), AT&T.

[CONTINUES NEXT PAGE]

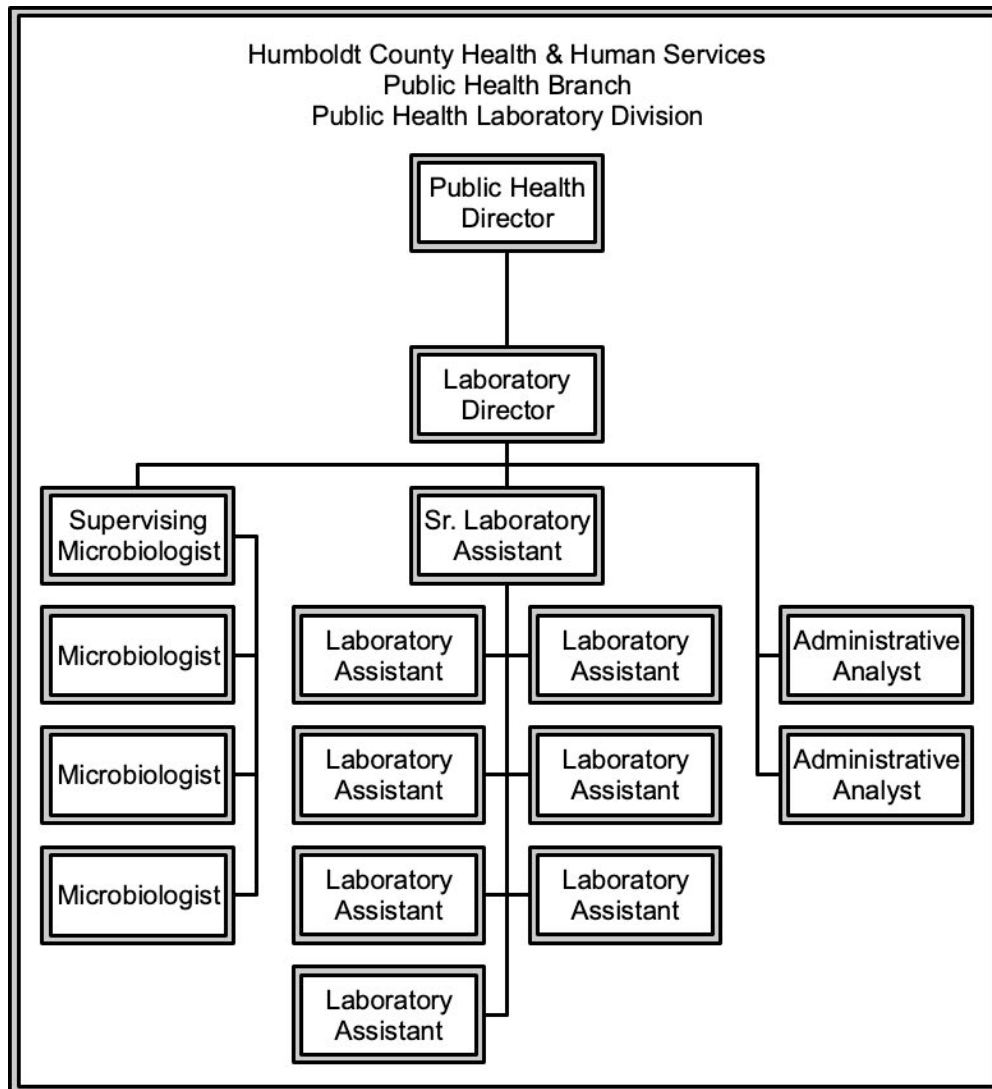
LABORATORY DATA

Staffing levels for new facility:

Laboratory Staff Title:	# of Positions	Administrative Staff Title:	# of Positions
Lab Director	1	Administrative Analyst	1-2
Supervising Microbiologist	1	-	-
Microbiologist	3	-	-
Sr. Lab Assistant	1	-	-
Lab Assistant	7	-	-
Total Lab Staff:	13	Total Administrative Staff:	1-2

Total Building Staff: 14-15

Laboratory Staff Organizational Chart:



Lab Testing & Throughput Data:

The Humboldt County Public Health Laboratory is one of 38 local city and county microbiology laboratories in California. Operating under the laws and regulations of California's Health and Safety Code and Title 17

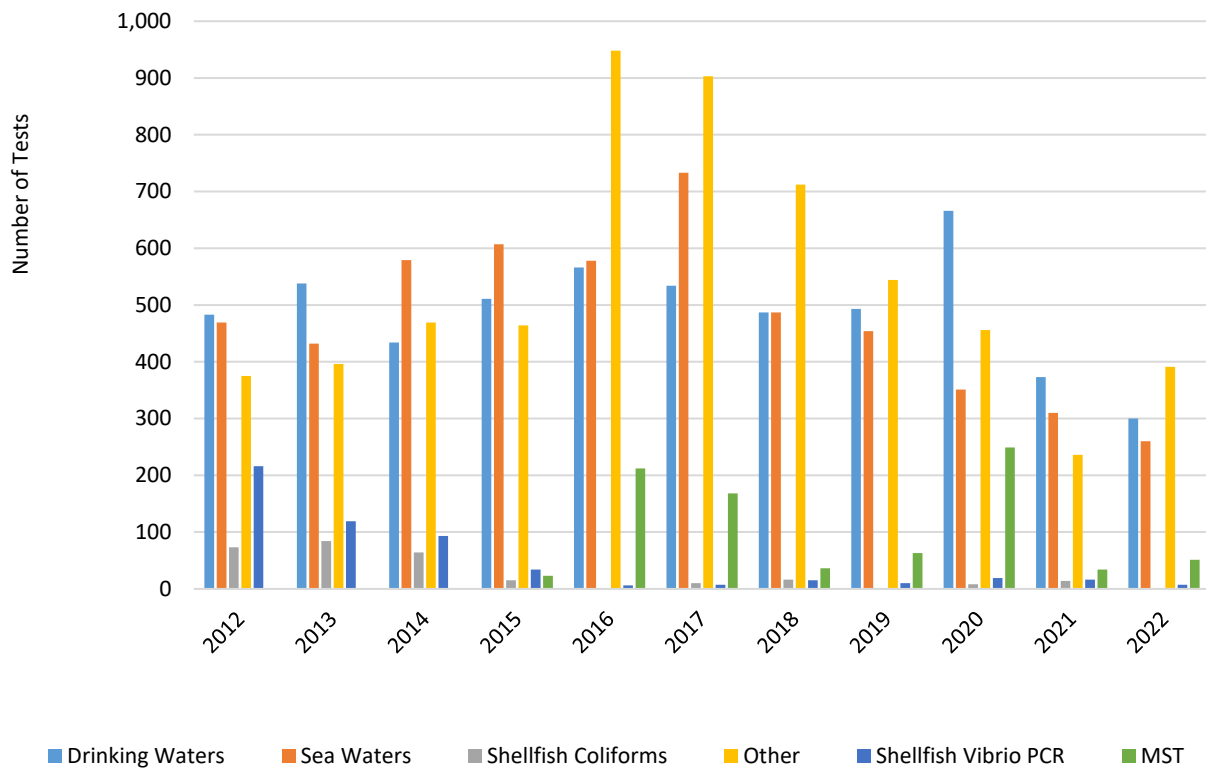
of the California Administrative Code, each local Public Health Laboratory provides diagnostic testing services in support of its local health department's programs. In addition, many also provide testing services to non-governmental entities to address disease issues of importance to their respective communities. Such services may include the analysis of various environmental samples or specimens aimed at assessing and/or mitigating local community health hazards.

Like many smaller public health laboratories, the throughput is normally relatively low, but needs to be able to expand when needing to respond to outbreak or pandemic situations. Below are descriptions of testing and historical test throughput data.

Environmental Laboratory Accreditation Program Testing:

The DHHS-Public Health Laboratory does Environmental Laboratory Accreditation Program (ELAP) testing as well as Clinical testing. Please reference the chart below for testing numbers from 2012 through 2022.

ELAP Testing Comparison 2012 to 2022



Source: Public Health Laboratory (January 2023)

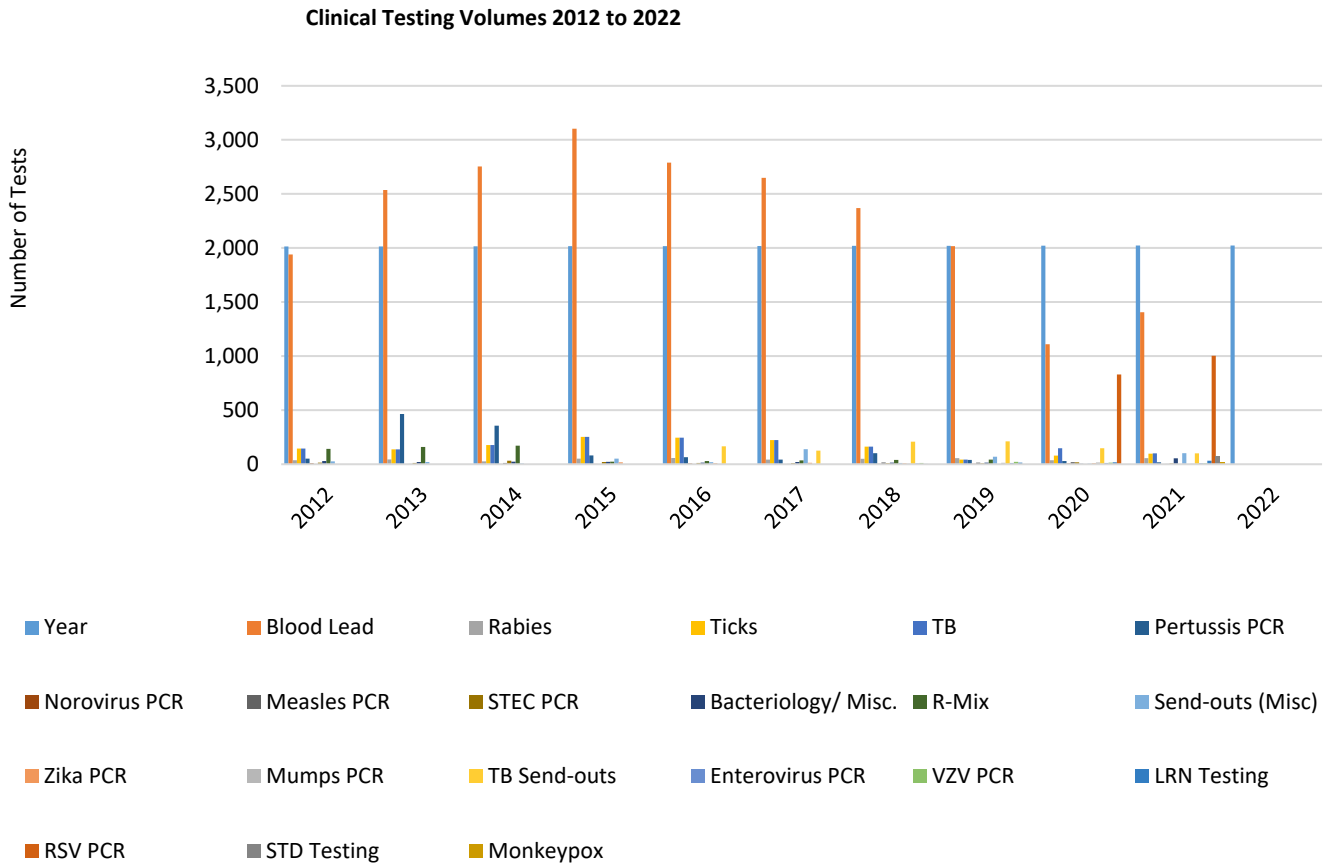
Shellfish testing resumed in Spring of 2010. Shellfish are tested for the presence of *Vibrio*, a genus of bacteria that in certain forms can be harmful to humans when consumed. This testing monitors and regulates our local shellfish industry and ensures public safety. *Vibrio* Polymerase Chain Reaction (PCR) testing, a more complete, quicker method to test shellfish, was added in 2012. *Vibrio* PCR testing reduces turnaround time by three days and also provides more detailed results to identify pathogenic *Vibrio* bacteria that are harmful to humans when consumed.

In early 2018 the microbial source tracking (MST) project was completed and only local submissions from the Division of Environmental Health were tested, explaining the decrease of bacteroides (MST) testing. In 2019, MST testing increased due to a new project that attempts to identify the source of fecal contamination at Clam Beach, which is on the state’s top 10 “Beach Bummers” list. State Parks surface water testing volume

went down due to a change in the submitter interpretation of regulations. In 2020, an increase in MST testing was a result of continuation of the project to identify the source of fecal contamination at Clam Beach. The "Other" category includes Bathing Beaches, Recreational Waters, and Surface Waters.

Clinical Testing Volume Chart:

Types of clinical testing change as different community needs arise. Please reference the chart below for clinical testing volumes between 2012 through 2022.

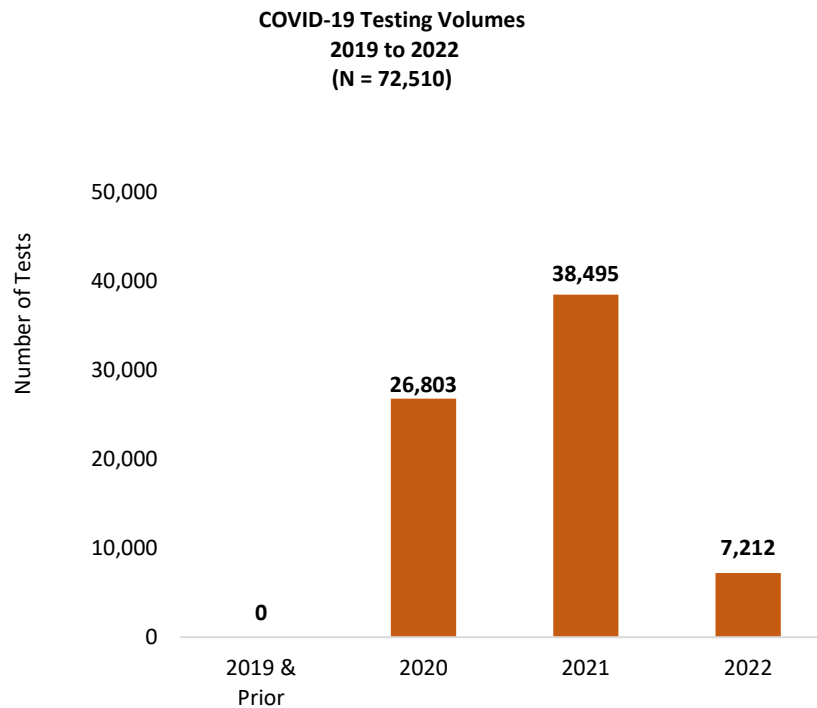


Source: Public Health Laboratory (January 2023)

In 2010 PCR testing for pertussis, norovirus, and influenza were added as well as a viral respiratory panel (R-Mix). In 2012, PCR testing for measles was added. Shiga toxin-producing Escherichia coli (STEC) PCR was added in 2013 and has enhanced the laboratory's ability to detect Shiga toxin-producing bacteria and decreased diagnostic turn-around time. R-Mix testing was discontinued in 2021 and Zika PCR testing was discontinued in 2022. RSV PCR testing was first offered in 2021 and uses the GeneXpert 4-plex test with SARS-CoV-2 and Influenza. Note that Influenza testing was removed from the Clinical Testing Volumes Chart due to a significantly higher level of testing skewing the chart; 7,212 Influenza PCR tests were performed in 2022.

The Public Health Laboratory implemented new testing in 2022. Sexually transmitted disease (STD) testing was implemented in partnership with the Public Health Clinic, and 72 Syphilis, Gonorrhea, and/or Chlamydia tests were performed. Monkeypox testing was implemented in response to the epidemic and 16 tests were performed with two positive cases.

The Public Health Laboratory's focus in 2020 was quickly diverted to response to the novel coronavirus, or COVID-19 pandemic. Response to the pandemic required additional testing equipment and extra laboratory staffing, as well as limiting the clinical testing the Laboratory could conduct. As a result, the number of send-outs increased in 2020 and a slight reduction of clinical testing, however the Laboratory maintained most testing levels compared to previous years. The Public Health Laboratory ran 26,803 tests for SARS-CoV2 from March through December 2020, 38,495 tests in 2021, and 7,212 tests in 2022. As a comparison, the Laboratory conducted a total of 3,070 clinical tests in 2019 and conducted a total of 16,193 tests in 2022. The Public Health Laboratory switched to the CDC Multiplex assay in 2021 that tests for both SARS-CoV-2 and Influenza A and B, which accounts for the large increase in Influenza tests for 2021. COVID-19 testing volumes are shown in the chart below.



Source: Public Health Laboratory (January 2023).

END OF ATTACHMENT A

HUMBOLDT COUNTY PUBLIC HEALTH LABORATORY EXPANSION PROJECT
 BASED ON PRELIMINARY PROGRAMMING WITH DHHS-PHB-LAB STAFF
PRELIMINARY SPACE PROGRAM SCHEDULE

Project Number 170256 12/20/23

BASED ON PRELIMINARY PROGRAMMING WITH DHHS-PHB-LAB STAFF

Floor	Number	Room Name	Preliminary Net Program Area	Clean / Dirty Area	Occupancy	Notes	Net Program Area (SF)	Gross Program Area (SF) 35% fact.	
<i>Program Spaces</i>							Total Program Area:	4995	6743
1		LOBBY / RECEPTION	200 sq ft	C	Public / Staff	Main entryway for public. Adjacent to lab receiving. Nearby admin & conference room.	200	270	
		ADMINISTRATIVE OFFICES	180 sq ft	C	Staff	Office to include desks for 2 staff. Operable window desired.	180	243	
		REPORTING OFFICE / COPY / WORK ROOM	400 sq ft	C	Staff	Shared/open office with 3-4 stations for lab staff reporting in clean area of building. Includes space/power/data connections for copier/fax/printer, countertop space for document collation, paper/office supply storage.	400	540	
		CONFERENCE ROOM	300 sq ft	C	Public / Staff	Large enough for 15 attendees, and AV ready. Possible training use.	300	405	
		RESTROOM	80 sq ft	C	Public/Staff	Single accessible bathroom for public/admin staff located near entry. Additional fixtures may be required depending on occ load & # of floors	80	108	
		RESTROOM	80 sq ft	C	Public/Staff	Single accessible bathroom for public/admin staff located near entry. Additional fixtures may be required depending on occ load & # of floors	80	108	
		OFFICE - LAB MANAGER / DIRECTOR	180 sq ft	C	Staff	Adjacent / near lab. Office space only	180	243	
		OFFICE - SUPERVISING MICROBIOLOGIST	120 sq ft	C	Staff	Adjacent / near lab. Office space only	120	162	
		OFFICE - SENIOR LAB ASSISTANT	120 sq ft	C	Staff	Adjacent / near lab. Office space only	120	162	
		OFFICE - STAFF MICROBIOLOGISTS	180 sq ft	C	Staff	Office to include desks for 2 staff. Operable window desired.	180	243	
		STAFF BREAK ROOM	120 sq ft	C	Staff	Clean area to sit and consume food/water with small table, small refrigerator & microwave. Locate Staff lockers here for lockable storage of personal items. Provide accessible locker and bench as required by code.	120	162	
		STAFF RESTROOM W/SHOWER	80 sq ft	C	Staff	Single accessible bathroom with shower for lab staff located near/adjacent to lab space.	80	108	
		LABORATORY SPACE (SEE SEPARATE SHEET-PG.2)	2255 sq ft	D	Staff	Shell/container for the program areas on separate sheet. Lab area to include appropriate number of eyewash stations and emergency showers.	2255	3044	
1		STORAGE - FILE STORAGE	100 sq ft	C	Staff	Lockable room. 5-7 File Cabinets, must keep 5 years of records on-site. Deep file storage- an be accessed via Warehousing space for only occasional access.	100	135	
		WAREHOUSING/ STORAGE AREA	600 sq ft	C	Staff	Area for deliveries and storage of larger items/pallets of materials. Adjacent to parking/delivery area. Overhead door to exterior for deliveries. Loading dock may be needed.	600	810	
<i>Related Program Spaces</i>							Total Related Program Area:	780	1053
1		ELECTRICAL ROOM	100 sq ft	C	Maint.	Main service, ATS and distribution panel in locked electrical room accessible from exterior	100	135	
		JANITOR ROOM	50 sq ft	C	Maint.	Includes: janitor's sink, storage racks for supplies, small workspace, storage for mops/trash can/vacuum.	50	68	
1		LAB UTILITIES	150 sq ft	C	Staff	On-demand HW heater, DI Water equipment, etc. co2 ports/ exterior tank. Vacuum pump.	150	203	
		IT / SERVER ROOM	80 sq ft	C	Staff	2 racks including UPS systems. MPOE for comm / data in room. Provide underground conduit to connection location at pole.	80	108	
		MECHANICAL ROOM	400 sq ft	C	Maint.	Mechanical room to serve entire building (heating/cooling/water heater) size/location may vary or be split to different areas.	400	540	
							TOTAL GROSS BUILDING AREA IN SQ. FT.:	7796	
<i>Site / Parking Area</i>									
Site	In general, meet City/County standards for parking (1per 500sf of building area) Ability for loading/unloading large trucks is desired. Include 20-minute space for sample drop-off may be needed (Lab has courier driver who needs ability for quick drop-offs & pickups). Bicycle parking per City standards / Code standards, whichever is more stringent. Provide screened trash / recycling area per City standards								
Site	EMERGENCY POWER		0 sq ft	C	Maint.	Generator for full-building emergency power. Site inside vault or at exterior of building near electrical room. (?) Or large battery system with generator dock?	0	0	

HUMBOLDT COUNTY PUBLIC HEALTH LABORATORY EXPANSION PROJECT
 BASED ON PRELIMINARY PROGRAMMING WITH DHHS-PHB-LAB STAFF
PRELIMINARY SPACE PROGRAM SCHEDULE

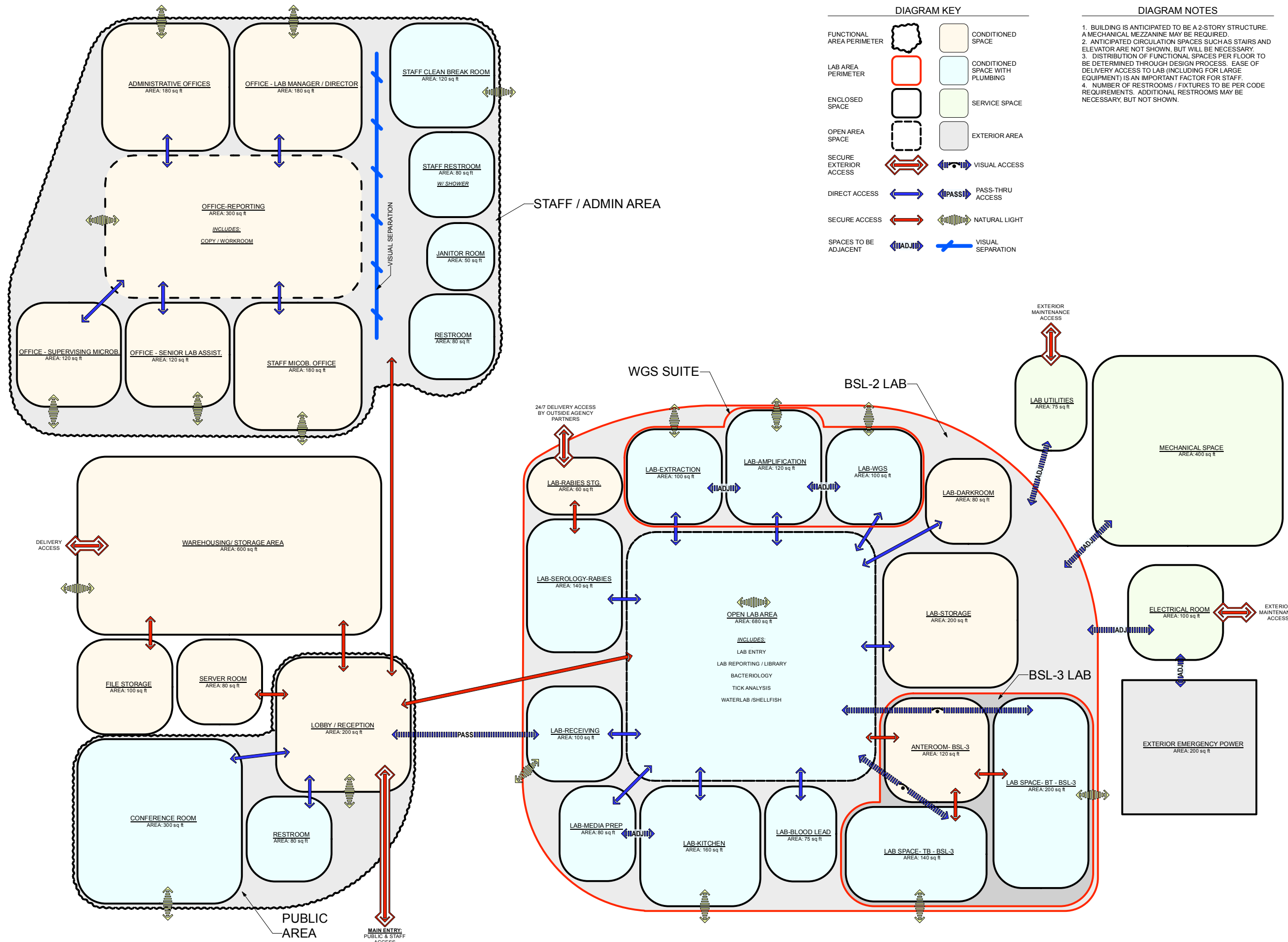
Project Number 170256 12/20/23

BASED ON PRELIMINARY PROGRAMMING WITH DHHS-PHB-LAB STAFF

Net Program Area (SF) Gross Program Area (SF) 35% fact.

Floor	Rm #	Room Name	Prelim. Net Program Area	Clean / Dirty Area	Occupancy	Notes	Program Area This Sheet:	2255	3044.25
Lab Program Spaces									
LABORATORY - BSL-2			1795 sq ft	D	Staff	Shell/container for the below program areas. Lab area to include appropriate number of eyewash stations and emergency showers.			0
SHARED SPACES / USES IN MAIN LAB									
		LAB ENTRY / LABCOAT STORAGE	120 sq ft	D	Staff	Located just inside entry to Lab area- space for labcoat storage, accessible bench for changing into garmets, handsink with foot controls, eyewash and other safety equipment	120		162
		WATERLAB / SHELLFISH	225 sq ft	D	Staff	High water usage- needs multiple sinks	225		303.75
		BACTERIOLOGY - SYPHILLIS	75 sq ft	D	Staff	ISOLATED FROM OTHER WORKSTATIONS	75		101.25
		TICK ANALYSIS WORKSTATION	75 sq ft	D	Staff	Bench space for countertop equipment and work area.	75		101.25
		BLOOD LEAD TESTING	75 sq ft	D	Staff	Humidity controlled space/workstation for blood lead testing. May be similar workstation if all of lab is kept in acceptable humidity level of <???, or a separate controlled room.	75		101.25
		REPORTING / LIBRARY	100 sq ft	D	Staff	Dirty area reporting workstation within BSL-2 lab space. Includes area for storage of professional library materials by staff - areas for individual staff shelving/storage inside lab ar	100		135
SPACES IN INDIVIDUAL ROOMS AT MAIN LAB									
		WGS / MOLECULAR TESTING SUITE			Staff	Area with 3 clearly separated discrete spaces for implementing proper WGS workflow as shown below			
		EXTRACTION	100 sq ft	D	Staff	Area with 3 clearly separated discrete spaces for implementing proper WGS workflow - Extraction(100sf)>Amplification(120sf)>Whole Genome Sequencing(100sf)	100		135
		AMPLIFICATION	120 sq ft	D	Staff	Area with 3 clearly separated discrete spaces for implementing proper WGS workflow - Extraction(100sf)>Amplification(120sf)>Whole Genome Sequencing(100sf)	120		162
		WGS	100 sq ft	D	Staff	Area with 3 clearly separated discrete spaces for implementing proper WGS workflow - Extraction(100sf)>Amplification(120sf)>Whole Genome Sequencing(100sf)	100		135
		RECEIVING	100 sq ft	D	Staff	Adjacent to or easily accessible to Lobby/Reception through pass-through window	100		135
		SEROLOGY- RABIES	125 sq ft	D	Staff	Include 1 biosafety cabinet and sink with fume hood.	125		168.75
		RABIES STORAGE	60 sq ft	D	Staff	Secure with access from exterior for partner agency drop-off. Provide direct access into Serology/Rabies lab space.	60		81
		LAB KITCHEN	160 sq ft	D	Staff	Autoclave, warewashing machine, deep sinks, dring racks, storage cabinets, DI water, floor drains, etc. - Central to all lab spaces	160		216
		STORAGE - LAB SUPPLIES	200 sq ft	D	Staff	Accessible from lab space - general storage for all types of lab consumables and supplies.	200		270
		MEDIA PREP ROOM	80 sq ft	D	Staff	Isolated, closeable, special ventillation system	80		108
		DARK ROOM	80 sq ft	D	Staff	Larger space with two microscopes/stations - Near Rabies workstation. Include worksurfaces for water sampling prep, reading, etc.	80		108
		BSL-3 LABORATORY - ACCESSED THROUGH MAIN LAB	460 sq ft	DD	Staff	To fit / be contained within larger lab area. To be further defined through BSL-3 requirements and guidelines. - Include 2 biosafety cabinets, anteroom with workstation, dark room, eyewash, emergency shower, ...SF area includes items listed below.			
		BSL-3 ANTEROOM	120 sq ft	D	Staff	Entry sallyport area for BSL3 lab spaces - Possibly adjacent to kitchen for pass-through autoclave access:	120		162
		BT LABORATORY - (In BSL-3 Lab)	200 sq ft	D	Staff	Bioterrorism Lab - area may need to be adjusted depending on equipment requirements	200		270
		TB LABORATORY - (in BSL-3 Lab)	140 sq ft	D	Staff	Tuberculosis Lab - area may be able to be adjusted depending on equipment requirements.	140		189

END OF PRELIMINARY SPACE PROGRAM



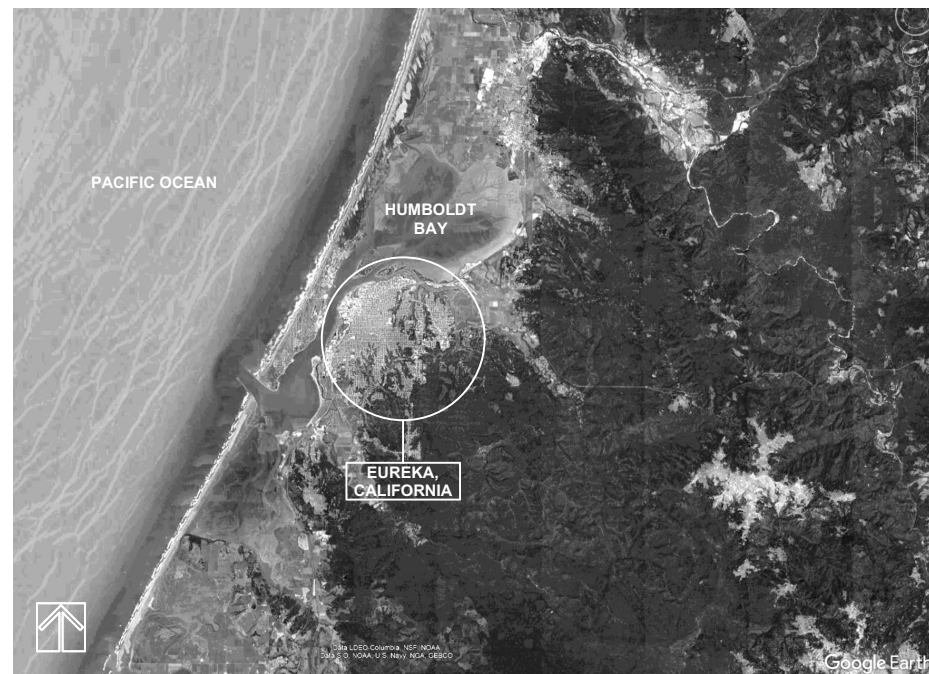
Design Firm
COUNTY OF HUMBOLDT DEPARTMENT OF PUBLIC WORKS
 1106 2ND ST. EUREKA, CA 95501

Project Title
HUMBOLDT COUNTY PUBLIC HEALTH LABORATORY REPLACEMENT PROJECT -
 3007 / 3015 I ST. | EUREKA, CA | 95501
 APN: 011 - 063 - 001 / 006
 Project ID
170256

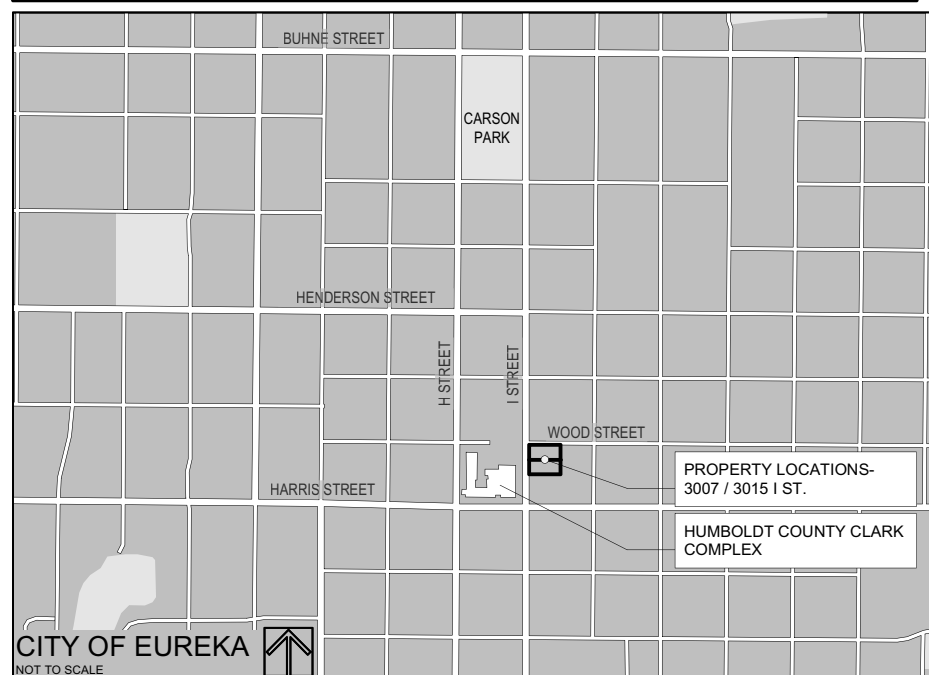
Sheet Title
PRELIMINARY BUBBLE DIAGRAM

Drawn: JBJ | Reviewed: -
 Date: 12.20.2023
 Scale: N.T.S.
 Sheet No.
BD-1.0

VICINITY MAP



PROJECT LOCATION



PROPOSED PROJECT OUTLINE:

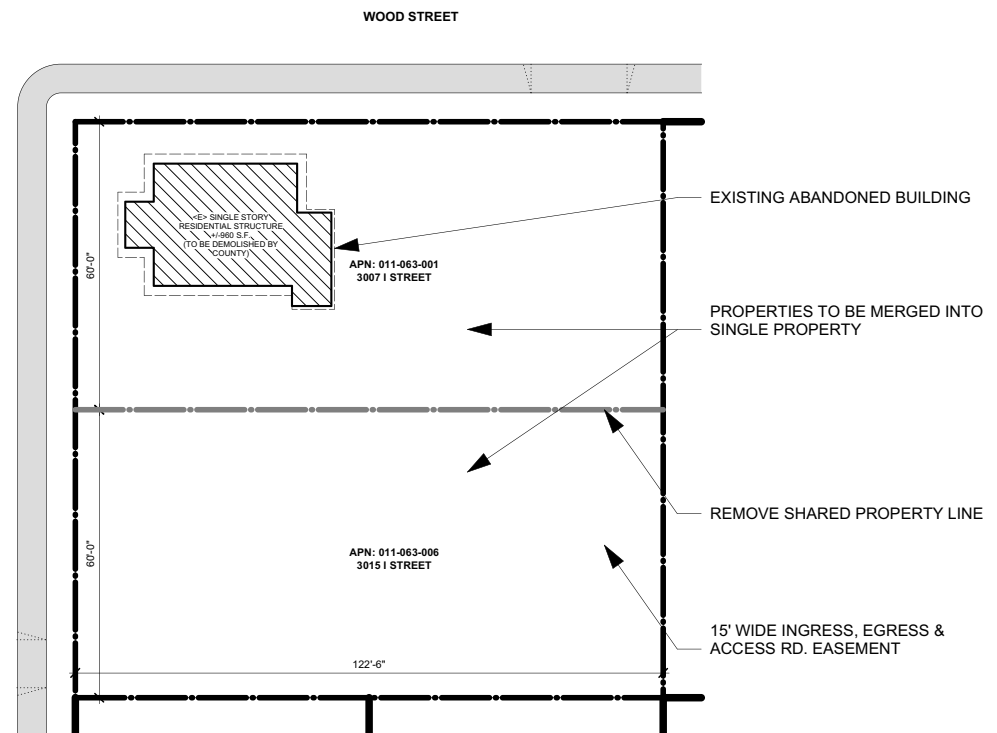
New Humboldt County Public Health Laboratory

The Humboldt County Public Health Laboratory provides laboratory testing services and support for community health providers to aid in the diagnosis and control of communicable diseases and promote a healthy environment. The laboratory also plays a key role in emergency preparedness by providing testing services, training, and support for area laboratories.

The existing Public Health Laboratory at 529 I Street in Eureka plans to modernize and consolidate into a single efficient facility at a new location adjacent to existing County facilities in Eureka, California. The new facility will serve the needs of the County into the future by incorporating genomic testing and its other processes in a cohesive manner.

Project Outline:

- Develop a new County facility consisting of a new 2 story government office facility to house the Humboldt County Public Health Laboratory.
- Proposed new structure to be approximately 7,000-10,000 square feet, and 28'-36' high.
- Design shall conform to the setback, height and size requirements of the City of Eureka Zoning Code.
- Approximate number of occupants: 15-20, including lab staff and administration.
- Approximate number of required parking stalls based on 1/500sf gross building area: 14-20
- Hours of operation: In general, the building will be operating during standard business hours of 8am-5pm, with occasional after-hours use.
- Public use of building: The building will likely be used in a very limited capacity for serving the public, primarily drop-off of samples and occasional meetings with outside groups and vendors.
- Use will necessitate occasional deliveries to and from local partner organizations in small vehicles, and occasional deliveries of materials and equipment for use in the building.
- The existing vacant single-family structure on the property is in poor condition and is planned to be demolished by the County. Hazardous materials including asbestos and lead are likely to be found in the structure and will be abated and removed appropriately.
- The existing structure has been evaluated by a qualified historical evaluation professional. This evaluation determined that the structure does not meet the criteria for being considered a historical resource.
- The County anticipates additional foot traffic between the existing County facilities in the area around the Clark Complex, which will inform planning and design of the new facility.



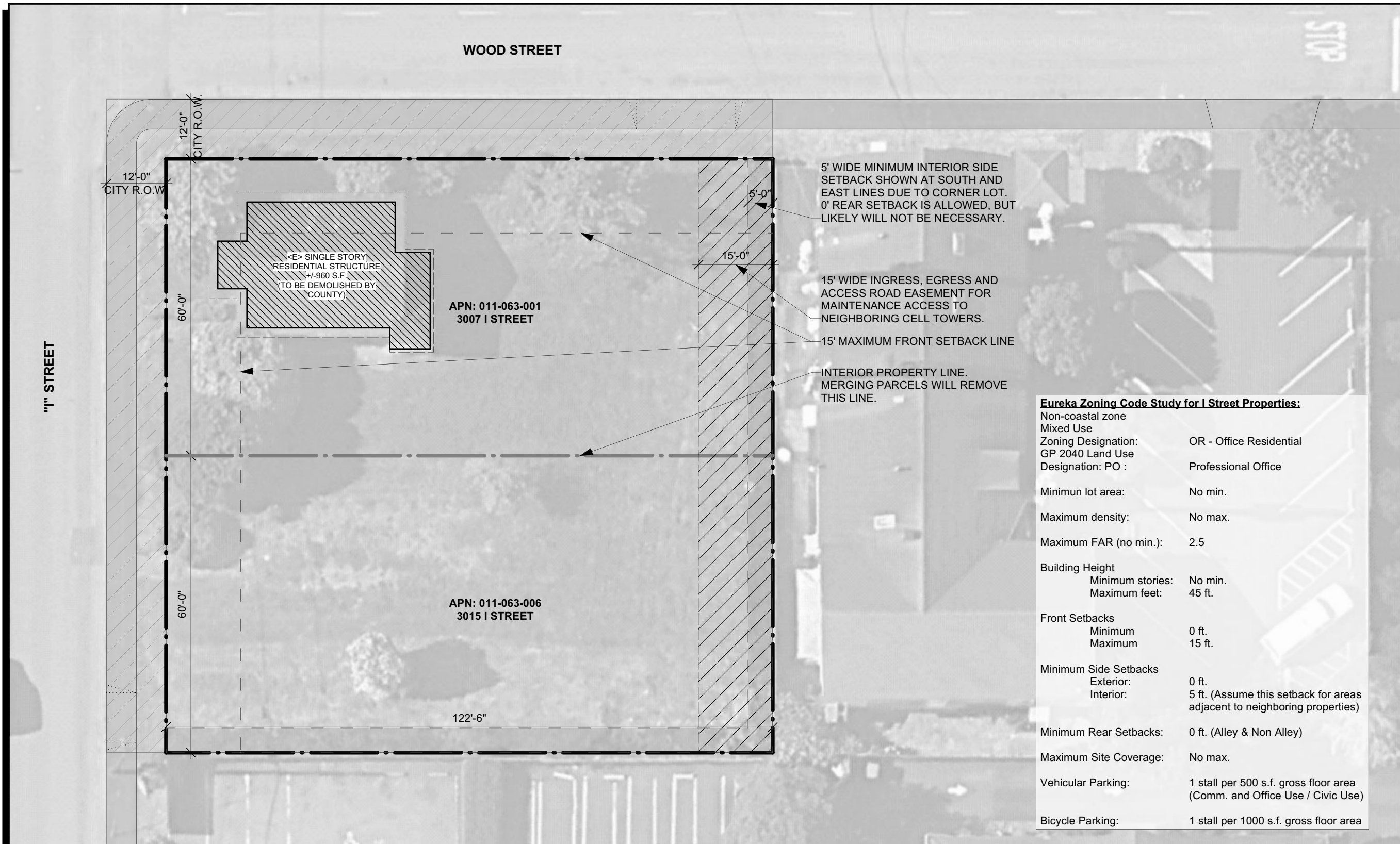
01 EXISTING PROPERTY MAP
Scale: 1" = 40'-0"

Design Firm
COUNTY OF HUMBOLDT DEPARTMENT OF PUBLIC WORKS
1106 2ND ST.
EUREKA, CA 95501

Project Title
HUMBOLDT COUNTY PUBLIC HEALTH LABORATORY REPLACEMENT PROJECT
3007 / 3015 I ST. | EUREKA, CA | 95501
APN: 011 - 063 - 001 / 006
Project ID
1 7 0 2 5 6

Sheet Title
PROJECT OUTLINE VICINITY AND PROPERTY MAP

Drawn JBJ Reviewed -
Date 12.20.2023
Scale AS SHOWN
Sheet No.
PD-1



5' WIDE MINIMUM INTERIOR SIDE SETBACK SHOWN AT SOUTH AND EAST LINES DUE TO CORNER LOT. 0' REAR SETBACK IS ALLOWED, BUT LIKELY WILL NOT BE NECESSARY.

15' WIDE INGRESS, EGRESS AND ACCESS ROAD EASEMENT FOR MAINTENANCE ACCESS TO NEIGHBORING CELL TOWERS.

15' MAXIMUM FRONT SETBACK LINE

INTERIOR PROPERTY LINE. MERGING PARCELS WILL REMOVE THIS LINE.

Eureka Zoning Code Study for I Street Properties:

Non-coastal zone	
Mixed Use	
Zoning Designation:	OR - Office Residential
GP 2040 Land Use	
Designation: PO :	Professional Office
Minimum lot area:	No min.
Maximum density:	No max.
Maximum FAR (no min.):	2.5
Building Height	
Minimum stories:	No min.
Maximum feet:	45 ft.
Front Setbacks	
Minimum	0 ft.
Maximum	15 ft.
Minimum Side Setbacks	
Exterior:	0 ft.
Interior:	5 ft. (Assume this setback for areas adjacent to neighboring properties)
Minimum Rear Setbacks:	0 ft. (Alley & Non Alley)
Maximum Site Coverage:	No max.
Vehicular Parking:	1 stall per 500 s.f. gross floor area (Comm. and Office Use / Civic Use)
Bicycle Parking:	1 stall per 1000 s.f. gross floor area

Design Firm
COUNTY OF HUMBOLDT DEPARTMENT OF PUBLIC WORKS

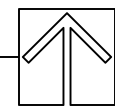
 1106 2ND ST.
 EUREKA, CA 95501

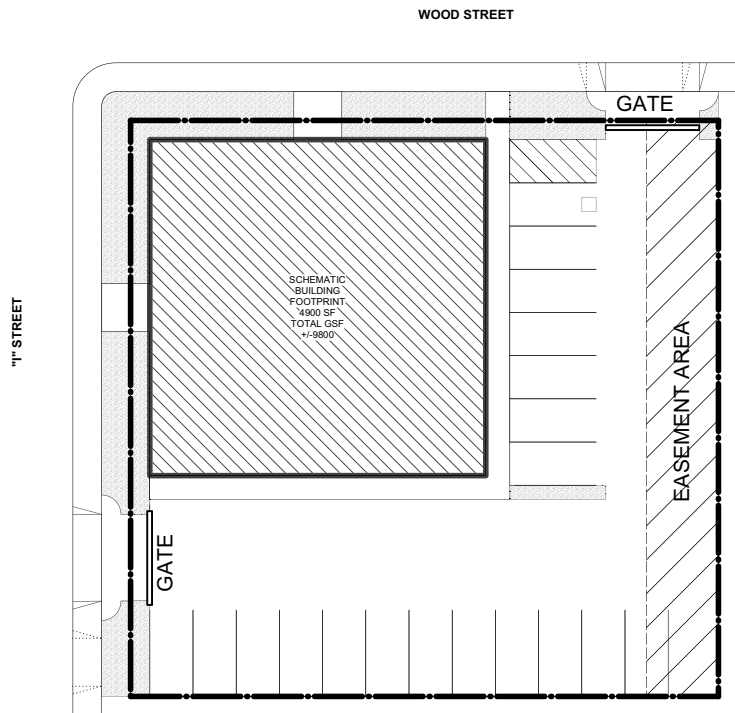
Project Title
HUMBOLDT COUNTY PUBLIC HEALTH LABORATORY REPLACEMENT PROJECT
 3007/3015 I ST. | EUREKA, CA | 95501
 APN: 011 - 063 - 001 / 006
 Project ID
1 7 0 2 5 6

Sheet Title
PRE-DESIGN STUDY: ZONING & SETBACKS

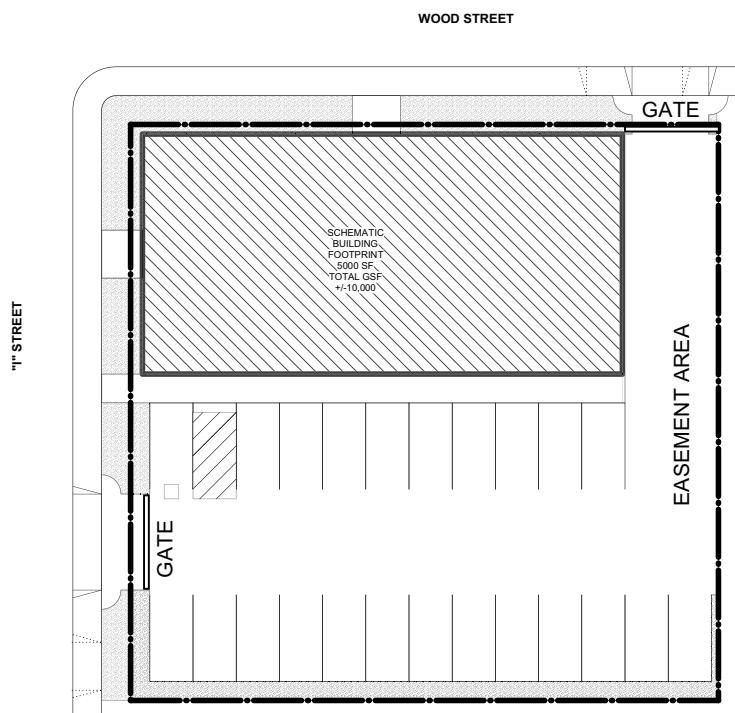
Drawn	JB	Reviewed	-
Date	12.20.2023		
Scale	AS SHOWN		
Sheet No.	PD-2		

01 SITE STUDY: ZONING, SETBACKS AND EASEMENTS
 Scale: 1" = 20'-0"





01 CONCEPTUAL PREDESIGN SITE PLAN A
 Scale: 1" = 40'-0"
 NOTE: CONCEPTUAL LAYOUT ONLY;
 DESIGN PROCESS TO PROCEED FOLLOWING
 PURCHASE OF PROPERTY.



02 CONCEPTUAL PREDESIGN SITE PLAN B
 Scale: 1" = 40'-0"
 NOTE: CONCEPTUAL LAYOUT ONLY;
 DESIGN PROCESS TO PROCEED FOLLOWING
 PURCHASE OF PROPERTY.

PROPERTY DEVELOPMENT NOTES:

Property Merger: (County to perform this work) Submit a Planning Application and Merger Supplemental to Development Services – Planning (planning@ci.eureka.ca.gov). The required materials for the merger process include a merger plan, preliminary title report that is less than six months old for both properties, and a legal description for the resulting parcel.

CEQA: (County is performing this work) The project qualifies for an infill development project exemption. The project proposes to demolish a structure that appears to be constructed in 1930, which has been determined not to have historical significance as defined under CEQA guidelines 15604.5. A historical survey report has been prepared by a qualified historian and is available for review if needed.

Design Review: The County has received a resolution of the Planning Commission of the City of Eureka determining general plan conformance for the proposed Public Helath Laboratory Replacement Project. Although the County is exempt from the City's zoning code standards and design review process, the County has submitted preliminary development plans for the proposed facility, which indicate the County intends to comply with applicable zoning regulations, including standards for size, height, setbacks, and vehicular and bicycle parking. The County (through their design team) shall provide an informational presentation to the Design Review Committee to solicit feedback on the physical appearance of the proposed building, landscaping and parking.

CITY OF EUREKA APPLICABLE DEVELOPMENT STANDARDS (following County/City Development Review meeting of 6/23/2022)

Link to City of Eureka's Inland Zoning Code: <https://www.eurekaca.gov/DocumentCenter/View/3079/Inland-zoning-adopted-120222>

Proposed Use: The proposed public health laboratory and offices falls under the definition of 'Medical Offices and Clinics' under the Eureka Municipal Code (EMC). Per EMC §155.208.020 (A) Table 208-1 [Allowed Land Uses], Medical Offices are a permitted use in the OR zone district.

The OR zone district's development standards can be found in EMC §155.208.030 (A) Table 208-2.

Design Standards: The project will need to conform with the Design Standards as shown in EMC §155.312. Under the Design Standards, all street-facing facades are required to comply with specific Exterior Material standards [EMC §155.312.030], primary entrances face the street must incorporate a certain design feature [EMC §155.312.040], and two architectural features listed under EMC §155.312.050 must be incorporated into the overall design of the street facing structure. Separately, EMC §155.312.060 [Blank Walls] limits the maximum width and height of blank wall areas along a street facing façade.

Parking Standards: Since there are no applicable exemptions under EMC §155.324.020.C [Non-Residential Use Exemptions], the project will need to provide onsite parking. According to EMC §155.324.030.A Table 324-1, Commercial and Office uses are required to provide a minimum of 1 parking space per 500-sf, which would require the project to provide the already indicated 14-20 parking spaces. EMC §155.324.060.B (3) states that while within a OR zone district, parking may only be located to the rear or side of a building. Furthermore, I Street is a major arterial road which requires the parking area to provide sufficient maneuvering area to allow vehicles to enter and access I Street in a forward motion. For additional parking design and development standards, please refer to EMC §155.324.060.

Bicycle Parking: Per EMC §155.324.070.C Table 324-3 [Required Bicycle Parking Spaces], 1 short-term space is required per 1,000 square feet and 1 long-term space is required per 20 required parking spaces. For specific standards on placement and design, please refer to EMC §155.324.070 (D-F).

Landscaping and Parking Lot Landscaping: Pursuant to EMC §155.324.080, parking lot landscaping is required for all new parking lots with four or more spaces. Figure 324-7 provides an excellent example of the landscaping required for parking lots. Furthermore, general landscaping is required in all areas between a building and a front or exterior side lot line, excluding areas used for access to the property. All new landscaping needs to comply with EMC §155.328.050 [General Landscape Requirements]. Specifically, at least 75%, by count, of all new in-ground shrubs, groundcover, and trees are required to be species native to Eureka as listed by the California Native Plant Society, with the remainder being noncompeting, non-invasive exotic species [EMC §155.328.050(D)(E)]. A landscape plan incorporating the above requirements and meeting required contents of EMC §155.328.030 [Required Contents] must be provided with the design review application.

Additional Standards: The project site must meet the standards for outdoor lighting (EMC § 155.308.050), solid waste and recyclable material storage (EMC § 155.308.070), and fences and walls (EMC §155.320), if applicable.

Design Firm
COUNTY OF HUMBOLDT DEPARTMENT OF PUBLIC WORKS
 1106 2ND ST.
 EUREKA, CA 95501

Project Title
HUMBOLDT COUNTY PUBLIC HEALTH LABORATORY REPLACEMENT PROJECT
 3007/3015 | ST. | EUREKA, CA | 95501
 APN: 011 - 063 -001 / 006
 Project ID
1 7 0 2 5 6

Sheet Title
CONCEPTUAL SITE PLANS, PROPERTY DEVELOPMENT NOTES & STANDARDS

Drawn	JB	Reviewed	-
Date	12.20.2023		
Scale	AS SHOWN		
Sheet No.			

PD-4

**REQUEST FOR QUALIFICATIONS – NO. DPW2024-002
PROFESSIONAL ARCHITECTURE AND ENGINEERING SERVICES
FOR THE PUBLIC HEALTH LABORATORY REPLACEMENT PROJECT**

**ATTACHMENT B – SIGNATURE AFFIDAVIT
(Submit with Proposal)**

SIGNATURE AFFIDAVIT	
NAME OF FIRM:	
STREET ADDRESS:	
CITY, STATE, ZIP	
CONTACT PERSON:	
PHONE #:	
FAX #:	
EMAIL:	

Government Code Sections 6250, et seq., the “Public Records Act,” define a public record as any writing containing information relating to the conduct of public business. The Public Records Act provides that public records shall be disclosed upon written request, and that any citizen has a right to inspect any public record, unless the document is exempted from disclosure.

In signing this Proposal, I certify that this firm has not, either directly or indirectly, entered into any agreement or participated in any collusion or otherwise taken any action in restraint of free competition; that no attempt has been made to induce any other person or firm to submit or not to submit a Proposal; that this Proposal has been independently arrived at without collusion with any other Consultant, competitor or potential competitor; that this Proposal has not been knowingly disclosed prior to the opening of Proposals to any other Consultant or competitor; and that the above statement is accurate under penalty of perjury.

The undersigned is an authorized representative of the above named firm and hereby agrees to all the terms, conditions and specifications required by the County in this Request for Proposals and declares that the attached Proposal is in conformity therewith.

Signature

Title

Name

Date

This firm hereby acknowledges receipt / review of the following Addenda, if any
Addendum # [] Addendum # [] Addendum # [] Addendum # []

**REQUEST FOR QUALIFICATIONS – NO. DPW2024-002
PROFESSIONAL ARCHITECTURE AND ENGINEERING SERVICES
FOR THE PUBLIC HEALTH LABORATORY REPLACEMENT PROJECT**

ATTACHMENT C – REFERENCE DATA SHEET
(Submit 3-5 copies with SOQ)

REFERENCE DATA SHEET	
Using multiple copies of this form, provide a minimum of three (3), maximum of five (5) references with name, address, contact person, and telephone number whose scope services is similar to those requested by Humboldt County (preferably in California). Previous business with the County of Humboldt does not qualify. This form must be filled out and submitted, but supplemental information sheets with additional project information may be included with this form.	
NAME OF REFERENCE:	
BUSINESS STREET ADDRESS:	
CITY, STATE, ZIP:	
AGENCY AFFILIATION:	TITLE:
PHONE #:	EMAIL:
PROJECT NAME:	
CONSTRUCTION COMMENCEMENT DATE:	CONSTRUCTION COMPLETION DATE:
INITIAL CONSTRUCTION BUDGET:	FINAL CONSTRUCTION COST:
DETAILED DESCRIPTION OF SERVICES PERFORMED INCLUDING:	
DETAILED DESCRIPTION OF HOW THE PROVIDED SERVICES LED TO ACCOMPLISHMENT OF CLIENT'S OBJECTIVES:	
DETAILED DESCRIPTION OF PROJECT:	
BUILDING AREA:	CONSTRUCTION TYPE:
SITE ADDRESS:	
I certify that all information provided on this Reference Data Sheet is true and correct to the best of my knowledge.	
SIGNATURE:	DATE:
NAME (PRINT):	
LIST ATTACHMENT(S) FOR THIS REFERENCE:	

**REQUEST FOR QUALIFICATIONS – NO. DPW2024-002
PROFESSIONAL ARCHITECTURE AND ENGINEERING SERVICES
FOR THE PUBLIC HEALTH LABORATORY REPLACEMENT PROJECT**

ATTACHMENT D – SAMPLE CONSULTANT SERVICES AGREEMENT

**CONSULTANT SERVICES AGREEMENT
BY AND BETWEEN
COUNTY OF HUMBOLDT
AND**

**[NAME OF CONSULTANT]
FOR FISCAL YEARS 20[]-20[] THROUGH 20[]-20[]**

This Agreement, entered into this ____ day of _____, 20[], by and between the County of Humboldt, a political subdivision of the State of California, hereinafter referred to as “COUNTY,” and [Name of Consultant], a [Name of State] [type of business], hereinafter referred to as “CONSULTANT,” is made upon the following considerations:

WHEREAS, COUNTY, by and through its Department of Public Works – Facilities Management Division, desires to retain a qualified professional organization to provide certain specified on-call engineering and project management services that are designed to assist COUNTY with the Public Health Laboratory Replacement Project; and

WHEREAS, such work involves the performance of professional, expert and technical services of a temporary and occasional character; and

WHEREAS, COUNTY has no employees available to perform such services and is unable to hire employees for the performance thereof for the temporary period; and

WHEREAS, CONSULTANT represents that it is adequately trained, skilled, experienced and qualified to perform the professional consulting services required by COUNTY.

NOW THEREFORE, the parties hereto mutually agree as follows:

1. OBLIGATIONS OF CONSULTANT:

- A. Professional Services. CONSULTANT hereby agrees to provide professional consulting services in accordance with the criteria, schedule and fiscal requirements set forth in Exhibit A – Scope of Services, Exhibit B – Project Schedule, Exhibit C – Project Budget and Exhibit D – Billing Rate Schedule, which are attached hereto and incorporated herein by reference as if set forth in full. In providing such services CONSULTANT agrees to fully cooperate with the Humboldt County Department of Public Works Director, or a designee thereof, hereinafter referred to as “Director.”
- B. Internal Controls. CONSULTANT shall maintain any and all appropriate internal financial controls over the funds received and disbursed pursuant to the terms and conditions of this Agreement, including, without limitation, procedures for tracking expenditures of such funds.
- C. Provision of Relevant Information. CONSULTANT shall cooperate with COUNTY in completing progress reports and other documents pertaining to the performance of CONSULTANT’s obligations hereunder, including, without limitation, providing, in a timely manner, any and all requested information regarding the services provided pursuant to the terms and conditions of this

Agreement.

- D. Project Access. In order to enable COUNTY to confirm CONSULTANT's compliance with the terms and conditions of this Agreement, CONSULTANT shall provide COUNTY, and any and all duly authorized representatives thereof, access to all work sites and any other areas associated with the services provided hereunder.

2. OBLIGATIONS OF COUNTY:

- A. Provision of Necessary Data and Materials. COUNTY shall provide CONSULTANT with any and all background data necessary for CONSULTANT to complete the services required pursuant to the terms and conditions of this Agreement.
- B. COUNTY Representative. COUNTY shall designate a representative with complete authority to transmit instructions and information, receive correspondence, interpret policy and define decisions related to the services provided pursuant to the terms and conditions of this Agreement. COUNTY's representative shall have overall charge and responsibility of COUNTY's duties and obligations required hereunder. Any and all correspondence pertaining to the performance of CONSULTANT's duties and obligations required hereunder shall be submitted to COUNTY's representative in accordance with the notice requirements set forth herein.
- C. Review of Submitted Materials. COUNTY shall thoroughly review any and all reports, proposals and other documents prepared and submitted pursuant to the terms and conditions of this Agreement. COUNTY shall provide CONSULTANT with a written response pertaining to the review of documents submitted by CONSULTANT within [REDACTED] () calendar days from the receipt thereof.

3. TERM:

This Agreement shall begin on [REDACTED] [REDACTED], 2022 and shall remain in full force and effect until [REDACTED] [REDACTED], 20[REDACTED], unless sooner terminated as provided herein.

4. TERMINATION:

- A. Termination for Cause. COUNTY may, in its sole discretion, immediately terminate this Agreement, if CONSULTANT fails to adequately perform the services required hereunder, fails to comply with the terms or conditions set forth herein, or violates any local, state or federal law, regulation or standard applicable to its performance hereunder.
- B. Termination without Cause. COUNTY may terminate this Agreement without cause upon thirty (30) days advance written notice which states the effective date of the termination.
- C. Termination due to Insufficient Funding. COUNTY's obligations under this Agreement are contingent upon the availability of local, state and/or federal funds. In the event such funding is reduced or eliminated, COUNTY shall, at its sole discretion, determine whether this Agreement shall be terminated. COUNTY shall provide CONSULTANT seven (7) days advance written notice of its intent to terminate this Agreement due to insufficient funding.
- D. Compensation upon Termination. In the event this Agreement is terminated, CONSULTANT shall be entitled to compensation for uncompensated services satisfactorily provided hereunder through and including the effective date of such termination. However, this provision shall not limit or

reduce any damages owed to COUNTY due to a breach of this Agreement by CONSULTANT.

5. COMPENSATION:

- A. Maximum Amount Payable. The maximum amount payable by COUNTY for any and all services provided, and costs and expenses incurred, pursuant to the terms and conditions of this Agreement is [REDACTED] Dollars (\$ [REDACTED], [REDACTED]. [REDACTED]). In no event shall the maximum amount paid under this Agreement exceed [REDACTED] Dollars (\$ [REDACTED], [REDACTED]. [REDACTED]) for fiscal year 20[REDACTED]-20[REDACTED] and [REDACTED] Dollars (\$ [REDACTED], [REDACTED]. [REDACTED]) for fiscal year 20[REDACTED]-20[REDACTED]. CONSULTANT hereby agrees to perform any and all services required by this Agreement for an amount not to exceed such maximum dollar amount. However, if local, state or federal funding or allowance rates are reduced or eliminated, COUNTY may, by amendment, reduce the maximum amount payable hereunder or terminate this Agreement as provided herein.
- B. Schedule of Rates. The specific rates and costs applicable to this Agreement are set forth in Exhibit C – Project Budget.
- C. Additional Services. Any additional services not otherwise set forth herein shall not be provided by CONSULTANT, or compensated by COUNTY, without COUNTY’s prior written authorization. Any and all unauthorized costs and expenses incurred above the maximum payable amount set forth herein shall be the responsibility of CONSULTANT. CONSULTANT shall notify COUNTY, in writing, at least six (6) weeks prior to the date upon which CONSULTANT estimates that the maximum payable amount will be reached.

6. PAYMENT:

CONSULTANT shall submit to COUNTY monthly invoices substantiating the costs and expenses incurred pursuant to the terms and conditions of this Agreement no later than thirty (30) days after the end of each month. CONSULTANT shall submit a final invoice for payment within thirty (30) days following the expiration or termination of this Agreement. Invoices shall be prepared using a format that is substantially similar to the format set forth in Exhibit E – Sample Invoice Form, which is attached hereto and incorporated herein by reference as if set forth in full. Payment for any and all costs and expenses incurred pursuant to the terms and conditions of this Agreement shall be made within thirty (30) days after the receipt of approved invoices. Any and all invoices submitted pursuant to the terms and conditions of this Agreement shall be sent to COUNTY at the following address:

COUNTY: Humboldt County Department of Public Works – Facilities Management Division
Attention: Jake Johnson, Construction Projects Manager
1106 Second Street
Eureka, California 95501

7. NOTICES:

Any and all notices required to be given pursuant to the terms and conditions of this Agreement shall be in writing and either served personally or sent by certified mail, return receipt requested, to the respective addresses set forth below. Notice shall be effective upon actual receipt or refusal as shown on the receipt obtained pursuant to the foregoing.

COUNTY: Humboldt County Department of Public Works
Attention: Thomas K. Mattson, Director

1106 Second Street
Eureka, California 95501

CONSULTANT: [Name of Consultant]
Attention: [Name of Contact Person], [Job Title]
[Street Address]
[City], [State] [Zip Code]

8. REPORTS:

CONSULTANT hereby agrees to provide COUNTY with any and all reports that may be required by any local, state and/or federal agencies for compliance with this Agreement. CONSULTANT shall submit one (1) hard copy and one (1) electronic copy of any and all reports required hereunder in a format that complies with the Americans with Disabilities Act and any other applicable local, state and federal accessibility laws, regulations and standards. Any and all reports required hereunder shall be submitted in accordance with any and all applicable timeframes using the format required by the State of California as appropriate.

9. RECORD RETENTION AND INSPECTION:

- A. Maintenance and Preservation of Records. CONSULTANT hereby agrees to timely prepare accurate and complete financial, performance and payroll records, documents and other evidence relating to the services provided pursuant to the terms and conditions of this Agreement, and to maintain and preserve said records for at least three (3) years from the date of final payment hereunder, or as otherwise required by any and all applicable local, state and federal laws, regulations and standards, except that if any litigation, claim, negotiation, audit or other action is pending, the records shall be retained until completion and resolution of all issues arising therefrom. Such records shall be original entry books with a general ledger itemizing all debits and credits for the services provided pursuant to the terms and conditions of this Agreement.
- B. Inspection of Records. Pursuant to California Government Code Section 8546.7, all records, documents, conditions and activities of CONSULTANT, and its subcontractors, related to the services provided pursuant to the terms and conditions of this Agreement, shall be subject to the examination and audit of the California State Auditor and any other duly authorized agents of the State of California for a period of three (3) years after the date of final payment hereunder, or as otherwise required by any and all applicable local, state and federal laws, regulations and standards. CONSULTANT hereby agrees to make all such records available during normal business hours to inspection, audit and reproduction by COUNTY and any other duly authorized local, state and/or federal agencies. CONSULTANT further agrees to allow interviews of any of its employees who might reasonably have information related to such records by COUNTY and any other duly authorized local, state and/or federal agencies. Any and all examinations and audits conducted hereunder shall be strictly confined to those matters connected with the performance of this Agreement, including, without limitation, the costs associated with the administration of this Agreement.
- C. Audit Costs. In the event of an audit exception or exceptions related to the services provided pursuant to the terms and conditions of this Agreement, the party responsible for not meeting the requirements set forth herein shall be responsible for the deficiency and for the cost of the audit. If the allowable expenditures cannot be determined because CONSULTANT's documentation is nonexistent or inadequate, according to generally accepted accounting practices, the questionable cost shall be disallowed by COUNTY.

10. MONITORING:

CONSULTANT hereby agrees that COUNTY has the right to monitor any and all activities related to this Agreement, including, without limitation, the right to review and monitor CONSULTANT's records, policies, procedures and overall business operations, at any time, in order to ensure compliance with the terms and conditions of this Agreement. CONSULTANT shall cooperate with a corrective action plan, if deficiencies in CONSULTANT's records, policies, procedures or business operations are identified by COUNTY. However, COUNTY is not responsible, and shall not be held accountable, for overseeing or evaluating the adequacy of CONSULTANT's performance hereunder.

11. CONFIDENTIAL INFORMATION:

- A. Disclosure of Confidential Information. CONSULTANT hereby agrees to protect all confidential information obtained pursuant to the terms and conditions of this Agreement in accordance with any and all applicable local, state and federal laws, regulations and standards.
- B. Continuing Compliance with Confidentiality Requirements. Each party hereby acknowledges that local, state and federal laws, regulations and standards pertaining to confidentiality, electronic data security and privacy are rapidly evolving and that amendment of this Agreement may be required to ensure compliance therewith. Each party agrees to enter into negotiations concerning an amendment to this Agreement embodying written assurances consistent with the requirements of any and all applicable local, state and federal laws, regulations or standards.

12. NON-DISCRIMINATION COMPLIANCE:

- A. Professional Services and Employment. In connection with the execution of this Agreement, CONSULTANT, and its subcontractors, shall not unlawfully discriminate in the provision of professional services or against any employee or applicant for employment because of: race; religion or religious creed; color; age, over forty (40) years of age; sex, including, without limitation, gender identity and expression, pregnancy, childbirth and related medical conditions; sexual orientation, including, without limitation, heterosexuality, homosexuality and bisexuality; national origin; ancestry; marital status; medical condition, including, without limitation, cancer and genetic characteristics; mental or physical disability, including, without limitation, HIV status and AIDS; political affiliation; military service; denial of family care leave; or any other classifications protected by any and all applicable local, state or federal laws, regulations or standards, all as may be amended from time to time. Nothing herein shall be construed to require the employment of unqualified persons.
- B. Compliance with Anti-Discrimination Laws. CONSULTANT further assures that it, and its subcontractors, will abide by the applicable provisions of: Title VI and Title VII of the Civil Rights Act of 1964; Section 504 of the Rehabilitation Act of 1973; the Age Discrimination Act of 1975; the Food Stamp Act of 1977; Title II of the Americans with Disabilities Act of 1990; the California Fair Employment and Housing Act; California Civil Code Sections 51, *et seq.*; California Government Code Sections 4450, *et seq.*; California Welfare and Institutions Code Section 10000; Division 21 of the California Department of Social Services Manual of Policies and Procedures; United States Executive Order 11246, as amended and supplemented by United States Executive Order 11375 and Part 60 of Title 41 of the Code of Federal Regulations ("C.F.R."); and any other applicable local, state or federal laws, regulations and standards, all as may be amended from time to time. The applicable regulations of the California Fair Employment and Housing Commission implementing California Government Code Section 12990, set forth in Sections 8101, *et seq.* of

Title 2 of the California Code of Regulations are incorporated herein by reference as if set forth in full.

13. NUCLEAR-FREE HUMBOLDT COUNTY ORDINANCE COMPLIANCE:

By executing this Agreement, CONSULTANT certifies that it is not a Nuclear Weapons Contractor, in that CONSULTANT is not knowingly or intentionally engaged in the research, development, production or testing of nuclear warheads, nuclear weapons systems or nuclear weapons components as defined by the Nuclear-Free Humboldt County Ordinance. CONSULTANT agrees to notify COUNTY immediately if it becomes a Nuclear Weapons Contractor as defined above. COUNTY may immediately terminate this Agreement if it determines that the foregoing certification is false or if CONSULTANT subsequently becomes a Nuclear Weapons Contractor.

14. DRUG-FREE WORKPLACE CERTIFICATION:

By executing this Agreement, CONSULTANT certifies that it will provide a drug-free workplace in accordance with the requirements of the Drug-Free Workplace Act of 1990 (California Government Code Sections 8350, *et seq.*), by doing all of the following:

- A. Drug-Free Policy Statement. Publish, as required by California Government Code Section 8355(a)(1), a Drug-Free Policy Statement which notifies employees that the unlawful manufacture, distribution, dispensation, possession or use of a controlled substance is prohibited, and specifies the actions to be taken against employees for violations.
- B. Drug-Free Awareness Program. Establish, as required by California Government Code Section 8355(a)(2), a Drug-Free Awareness Program which informs employees about:
 - 1. The dangers of drug abuse in the workplace;
 - 2. CONSULTANT's policy of maintaining a drug-free workplace;
 - 3. Any available counseling, rehabilitation and employee assistance programs; and
 - 4. Penalties that may be imposed upon employees for drug abuse violations.
- C. Drug-Free Employment Agreement. Ensure, as required by California Government Code Section 8355(a)(3), that every employee who provides services hereunder will:
 - 1. Receive a copy of CONSULTANT's Drug-Free Policy Statement; and
 - 2. Agree to abide by CONSULTANT's Drug-Free Policy as a condition of employment.
- D. Effect of Non-Compliance. Failure to comply with the requirements set forth herein may result in termination of this Agreement and/or ineligibility for award of future contracts.

15. INDEMNIFICATION:

- A. Hold Harmless, Defense and Indemnification. To the fullest extent permitted by law, and in accordance with California Civil Code Section 2782.8, CONSULTANT shall hold harmless, defend and indemnify COUNTY and its agents, officers, officials, employees and volunteers from and against any and all claims, demands, losses, damages, liabilities, expenses and costs of any kind or

nature, including, without limitation, attorney's fees and other costs of litigation, arising out of, or in connection with, CONSULTANT's negligence, recklessness or willful misconduct in the performance of the services required pursuant to the terms and conditions of this Agreement, except such loss or damage which was caused by the sole negligence or willful misconduct of COUNTY or its agents, officers, officials, employees and volunteers.

- B. Effect of Insurance. Acceptance of the insurance required by this Agreement shall not relieve CONSULTANT from liability under this provision. This provision shall apply to all claims for damages related to CONSULTANT's performance hereunder regardless of whether any insurance is applicable or not. The insurance policy limits set forth herein shall not act as a limitation upon the amount of indemnification or defense to be provided hereunder.

16. INSURANCE REQUIREMENTS:

This Agreement shall not be executed by COUNTY, and CONSULTANT is not entitled to any rights hereunder, unless certificates of insurance, or other proof that the following provisions have been complied with, are filed with the Clerk of the Humboldt County Board of Supervisors.

- A. General Insurance Requirements. Without limiting CONSULTANT's indemnification obligations set forth herein, CONSULTANT, and its subcontractors hereunder, shall take out and maintain, throughout the entire term of this Agreement, and any extensions thereof, the following policies of insurance, placed with insurers authorized to do business in the State of California with a current A.M. Bests rating of no less than A: VII or its equivalent against personal injury, death and property damage which may arise from, or in connection with, the activities of CONSULTANT and its agents, officers, directors, employees, licensees, invitees, assignees or subcontractors:
1. Comprehensive or Commercial General Liability Insurance at least as broad as Insurance Services Office Commercial General Liability Coverage (occurrence form CG 0001), in an amount of Two Million Dollars (\$2,000,000.00) per occurrence for any one (1) incident, including, without limitation, personal injury, death and property damage. If a general aggregate limit is used, such limit shall apply separately hereto or shall be twice the required occurrence limit.
 2. Automobile/Motor Liability Insurance with a limit of liability not less than One Million Dollars (\$1,000,000.00) combined single limit coverage. Such insurance shall include coverage of all owned, hired and non-owned vehicles, and be at least as broad as Insurance Service Offices Form Code 1 (any auto).
 3. Workers' Compensation Insurance, as required by the California Labor Code, with statutory limits, and Employers Liability Insurance with a limit of no less than One Million Dollars (\$1,000,000.00) per accident for bodily injury or disease. Said policy shall contain, or be endorsed to contain, a waiver of subrogation against COUNTY and its agents, officers, officials, employees and volunteers.
 4. Professional Liability Insurance – Error and Omission Coverage including coverage in an amount no less than Two Million Dollars (\$2,000,000.00) for each occurrence (Four Million Dollars (\$4,000,000.00) general aggregate). Said insurance shall be maintained for the statutory period during which CONSULTANT may be exposed to liability regarding the services provided pursuant to the terms and conditions of this Agreement. CONSULTANT shall require that such coverage be incorporated into its professional services agreements with any other entities.

- B. Special Insurance Requirements. Said policies shall, unless otherwise specified herein, be endorsed with the following provisions:
1. The Comprehensive or Commercial General Liability Policy shall provide that COUNTY, and its agents, officers, officials, employees and volunteers, are covered as additional insured for liability arising out of the operations performed by, or on behalf of, CONSULTANT. Such coverage shall contain no special limitations on the scope of protection afforded to COUNTY or its agents, officers, officials, employees and volunteers. Said policy shall also contain a provision stating that such coverage:
 - a. Includes contractual liability.
 - b. Does not contain exclusions as to property damage caused by explosion or collapse of structures or underground damage, commonly referred to as “XCU Hazards.”
 - c. Is the primary insurance with regard to COUNTY.
 - d. Does not contain a pro-rata, excess only and/or escape clause.
 - e. Contains a cross liability, severability of interest or separation of insureds clause.
 2. The above-referenced policies shall not be canceled, non-renewed or materially reduced in coverage without thirty (30) days prior written notice being provided to COUNTY in accordance with the notice requirements set forth herein. It is further understood that CONSULTANT shall not terminate such coverage until COUNTY receives adequate proof that equal or better insurance has been secured.
 3. The inclusion of more than one (1) insured shall not operate to impair the rights of one (1) insured against another insured, and the coverage afforded shall apply as though separate policies had been issued to each insured, but the inclusion of more than one (1) insured shall not operate to increase the limits of the insurer’s liability.
 4. For claims related to this Agreement, CONSULTANT’s insurance is the primary coverage to COUNTY, and any insurance or self-insurance programs maintained thereby are excess to CONSULTANT’s insurance and will not be used to contribute therewith.
 5. Any failure to comply with the terms and conditions of this Agreement shall not affect the coverage provided to COUNTY or its agents, officers, officials, employees and volunteers.
 6. CONSULTANT shall furnish COUNTY with certificates and original endorsements effecting the required coverage prior to execution of this Agreement. The endorsements shall be on forms approved by the Humboldt County Risk Manager. Any deductible or self-insured retention over One Hundred Thousand Dollars (\$100,000.00) shall be disclosed to, and approved by, COUNTY. If CONSULTANT does not keep all required policies in full force and effect, COUNTY may, in addition to any other available remedies, take out the necessary insurance and deduct the cost of said insurance from the monies owed to CONSULTANT under this Agreement.
 7. COUNTY is to be notified immediately if twenty-five percent (25%) or more of any required insurance aggregate limit is encumbered, and CONSULTANT shall be required to purchase

additional coverage to meet the above-referenced aggregate limits.

- C. Insurance Notices. Any and all insurance notices required to be given hereunder shall be sent to the addresses set forth below in accordance with the notice requirements contained herein.

COUNTY: County of Humboldt
Attention: Risk Management
825 Fifth Street, Room 131
Eureka, California 95501

CONSULTANT: [Name of Consultant]
Attention: [Name of Contact Person], [Job Title]
[Street Address]
[City], [State] [Zip Code]

17. RELATIONSHIP OF PARTIES:

It is understood that this Agreement is by and between two (2) independent entities and is not intended to, and shall not be construed to, create the relationship of agent, servant, employee, partnership, joint venture or any other similar association. Both parties further agree that CONSULTANT shall not be entitled to any benefits to which COUNTY employees are entitled, including, without limitation, overtime, retirement, leave or workers' compensation benefits. CONSULTANT shall be solely responsible for the acts and omissions of its agents, officers, employees, assignees and subcontractors.

18. COMPLIANCE WITH APPLICABLE LAWS, REGULATIONS AND STANDARDS:

- A. General Legal Requirements. CONSULTANT hereby agrees to comply with any and all local, state and federal laws, regulations, policies, procedures and standards applicable to the services provided pursuant to the terms and conditions of this Agreement.
- B. Licensure Requirements. CONSULTANT hereby agrees to comply with any and all local, state and federal licensure, certification and accreditation requirements and standards applicable to the services provided pursuant to the terms and conditions of this Agreement.
- C. Accessibility Requirements. CONSULTANT hereby agrees to comply with any and all applicable accessibility requirements set forth in the Americans with Disabilities Act, Section 508 of the Rehabilitation Act of 1973, as amended, California Government Code Section 11135 and any current and future implementing regulations, policies, procedures and standards promulgated thereunder, including, without limitation, the federal accessibility standards set forth in 36 C.F.R. Section 1194.1, all as may be amended from time to time.
- D. Conflict of Interest Requirements. CONSULTANT hereby agrees to comply with any and all applicable conflict of interest requirements set forth in the California Political Reform Act and any implementing regulations, policies, procedures and standards promulgated thereunder, including, without limitation, the Humboldt County Conflict of Interest Code, all as may be amended from time to time.
- E. Prevailing Wage Requirements. CONSULTANT hereby agrees to comply with any and all applicable prevailing wage requirements set forth in California Labor Code Sections 1770, *et seq.* and any current and future implementing regulations, policies, procedures and standards promulgated thereunder, all as may be amended from time to time.

19. PROVISIONS REQUIRED BY LAW:

This Agreement is subject to any additional local, state and federal restrictions, limitations or conditions that may affect the terms, conditions or funding of this Agreement. This Agreement shall be read and enforced as though all legally required provisions are included herein, and if for any reason any such provision is not included, or incorrectly stated, the parties agree to amend the pertinent section to make such insertion or correction.

20. REFERENCE TO LAWS, REGULATIONS AND STANDARDS:

In the event any law, regulation or standard referred to herein is amended during the term of this Agreement, the parties agree to comply with the amended provision as of the effective date thereof.

21. REFERENCE TO LAWS, REGULATIONS AND STANDARDS:

Each party hereby agrees that the inclusion of additional protocols may be required to make this Agreement specific. All such protocols shall be negotiated, determined and agreed upon by both parties hereto.

22. SEVERABILITY:

If any provision of this Agreement, or any portion thereof, is found by any court of competent jurisdiction to be unenforceable or invalid for any reason, such provision shall be severable and shall not in any way impair the enforceability of any other provision of this Agreement.

23. ASSIGNMENT:

Neither party shall delegate its duties or assign its rights hereunder, either in whole or in part, without the other party's prior written consent. Any assignment by CONSULTANT in violation of this provision shall be void, and shall be cause for immediate termination of this Agreement. This provision shall not be applicable to service agreements or other arrangements usually or customarily entered into by either party to obtain supplies, technical support or professional services.

24. AGREEMENT SHALL BIND SUCCESSORS:

All provisions of this Agreement shall be fully binding upon, and inure to the benefit of, the parties and to each of their heirs, executors, administrators, successors and permitted assigns.

25. WAIVER OF DEFAULT:

The waiver by either party of any breach of this Agreement shall not be deemed to be a waiver of any such breach in the future, or of the breach of any other requirement of this Agreement. In no event shall any payment by COUNTY constitute a waiver of any breach of this Agreement which may then exist on the part of CONSULTANT. Nor shall such payment impair or prejudice any remedy available to COUNTY with respect to the breach or default. COUNTY shall have the right to demand repayment of, and CONSULTANT shall promptly refund, any funds which COUNTY determines were not expended in accordance with the terms and conditions of this Agreement.

26. AMENDMENT:

This Agreement may be amended at any time during the term hereof upon the mutual consent of both parties. No addition to, or alteration of, the terms of this Agreement shall be valid unless made in writing and signed by the parties hereto.

27. NON-LIABILITY OF COUNTY OFFICIALS AND EMPLOYEES:

No official or employee of COUNTY shall be personally liable for any default or liability under this Agreement.

28. STANDARD OF PRACTICE:

CONSULTANT warrants that it has the degree of learning and skill ordinarily possessed by reputable professionals practicing in similar localities in the same profession and under similar circumstances. CONSULTANT's duty is to exercise such care, skill and diligence as professionals engaged in the same profession ordinarily exercise under like circumstances.

29. TITLE TO INFORMATION AND DOCUMENTS:

It is understood that any and all documents, information and reports concerning the subject matter of this Agreement prepared and/or submitted by CONSULTANT shall become the property of COUNTY. However, CONSULTANT may retain copies of such documents, information and reports for its records. In the event this Agreement is terminated, CONSULTANT shall promptly turn over all such documents, information and reports to COUNTY without exception or reservation.

30. JURISDICTION AND VENUE:

This Agreement shall be construed in accordance with the laws of the State of California. Any dispute arising hereunder, or relating hereto, shall be litigated in the State of California and venue shall lie in the County of Humboldt unless transferred by court order pursuant to California Code of Civil Procedure Sections 394 or 395.

31. ADVERTISING AND MEDIA RELEASE:

Any and all informational material related to this Agreement shall receive approval from COUNTY prior to being used as advertising or released to the media, including, without limitation, television, radio, newspapers and internet. CONSULTANT shall inform COUNTY of any and all requests for interviews by the media related to this Agreement before such interviews take place. COUNTY shall be entitled to have a representative present at any and all interviews concerning the subject matter of this Agreement. Any and all notices required by this provision shall be given to Director in accordance with the notice requirements set forth herein.

32. SUBCONTRACTS:

CONSULTANT shall obtain prior written approval from COUNTY before subcontracting any of the services to be provided pursuant to the terms and conditions of this Agreement. Any and all subcontracts shall be subject to all applicable terms and conditions of this Agreement; however, nothing set forth herein shall operate to confer any rights, remedies, obligations or liabilities upon any third parties. CONSULTANT shall remain legally responsible for the performance of all terms and conditions of this Agreement, including, without limitation, any and all services provided by third parties under subcontracts, whether approved by COUNTY or not.

33. ATTORNEYS' FEES:

If either party shall commence any legal action, including, without limitation, an action for declaratory relief, against the other by reason of the alleged failure of the other to perform any of its obligations hereunder, the party prevailing in said action shall be entitled to recover court costs and reasonable attorneys' fees, including, but not limited to, the reasonable value of services rendered by the Humboldt County Counsel's Office, to be fixed by the court, and such recovery shall include court costs and attorneys' fees on appeal, if applicable. As used herein, the term "prevailing party" means the party who dismisses an action in exchange for payment of substantially all sums allegedly due, performance of provisions allegedly breached or other considerations substantially equal to the relief sought by said party, as well as the party in whose favor final judgment is rendered.

34. SURVIVAL OF PROVISIONS:

The duties and obligations of the parties set forth in Section [](1) – Compensation upon Termination, Section [] – Record Retention and Inspection, Section [] – Confidential Information and Section [] – Indemnification shall survive the expiration or termination of this Agreement.

35. CONFLICTING TERMS OR CONDITIONS:

In the event of any conflict in the terms or conditions set forth in any other agreements in place between the parties hereto and the terms and conditions set forth in this Agreement, the terms and conditions set forth herein shall have priority.

36. INTERPRETATION:

This Agreement, as well as its individual provisions, shall be deemed to have been prepared equally by both of the parties hereto, and shall not be construed or interpreted more favorably for one (1) party on the basis that the other party prepared it.

37. INDEPENDENT CONSTRUCTION:

The titles of the sections and subsections set forth herein are inserted for convenience of reference only and shall be disregarded in construing or interpreting any of the provisions of this Agreement.

38. FORCE MAJEURE:

Neither party hereto shall be liable or responsible for delays or failures in performance resulting from events beyond the reasonable control, and without the fault or negligence, of such party. Such events shall include, without limitation, acts of God, strikes, lockouts, riots, acts of war, epidemics, pandemics, acts of government, fire, power failures, nuclear accidents, earthquakes, unusually severe weather, acts of terrorism or other disasters, whether or not similar to the foregoing.

39. ENTIRE AGREEMENT:

This Agreement contains all of the terms and conditions agreed upon by the parties hereto and no other agreements, oral or otherwise, regarding the subject matter of this Agreement shall be deemed to exist or to bind either of the parties hereto. In addition, this Agreement shall supersede in their entirety any and all prior agreements, promises, representations, understandings and negotiations of the parties, whether oral or written, concerning the same subject matter. Any and all acts which may have already been consummated pursuant to the terms and conditions of this Agreement are hereby ratified.

40. COUNTERPART EXECUTION:

This Agreement, and any amendments hereto, may be executed in one (1) or more counterparts, each of which shall be deemed to be an original and all of which, when taken together, shall be deemed to be one (1) and the same agreement. This Agreement, and any amendments hereto, may be signed by manual or electronic signatures in accordance with any and all applicable local, state and federal laws, regulations and standards, and such signatures shall constitute original signatures for all purposes. A signed copy of this Agreement, and any amendments hereto, transmitted by email or by other means of electronic transmission shall be deemed to have the same legal effect as delivery of an original executed copy of this Agreement and any amendments hereto.

41. AUTHORITY TO EXECUTE:

Each person executing this Agreement warrants that he or she is duly authorized and has legal authority to execute this Agreement. Each party represents and warrants to the other that the execution and delivery of this Agreement and the performance of such party's obligations hereunder have been duly authorized.

IN WITNESS WHEREOF, the parties have entered into this Agreement as of the first date written above.

TWO SIGNATURES ARE REQUIRED FOR CORPORATIONS:

- (1) CHAIRPERSON OF THE BOARD, PRESIDENT, OR VICE PRESIDENT; AND
- (2) SECRETARY, CHIEF FINANCIAL OFFICER OR TREASURER.

NAME OF CONSULTANT:

By: _____

Date:

Name: _____

Title: _____

By: _____

Date:

Name: _____

Title: _____

COUNTY OF HUMBOLDT:

By: _____

Date:

Rex Bohn, Chair
Humboldt County Board of Supervisors

INSURANCE AND INDEMNIFICATION REQUIREMENTS APPROVED:

By: _____

Date:

Risk Management

LIST OF EXHIBITS:

- Exhibit A – Scope of Services
- Exhibit B – Project Schedule
- Exhibit C – Project Budget
- Exhibit D – Billing Rate Schedule
- Exhibit E – Sample Invoice

SAMPLE