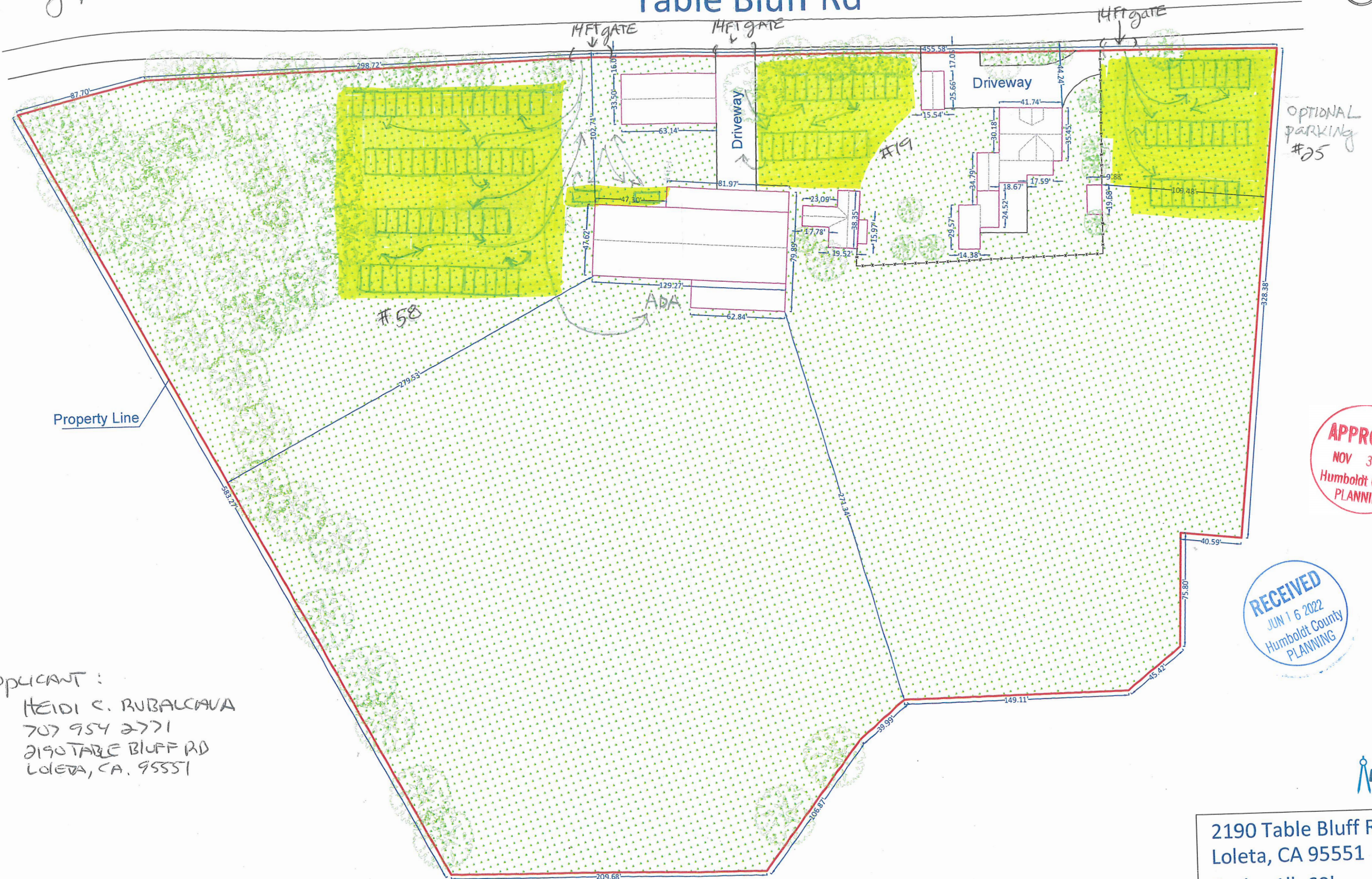
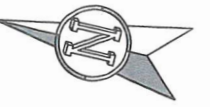


PARKING PLAN ADV # 308-131-033-000

# 2190 Table Bluff Rd



Property Line

#58

#19

OPTIONAL  
PARKING  
#25

**APPROVED**  
 NOV 3 2022  
 Humboldt County  
 PLANNING

**RECEIVED**  
 JUN 16 2022  
 Humboldt County  
 PLANNING

Applicant:  
 HEIDI C. RUBALCAVA  
 707 954 2771  
 2190 TABLE BLUFF RD  
 LOLETA, CA. 95551



2190 Table Bluff Rd  
 Loleta, CA 95551  
 Scale: 1"=60'