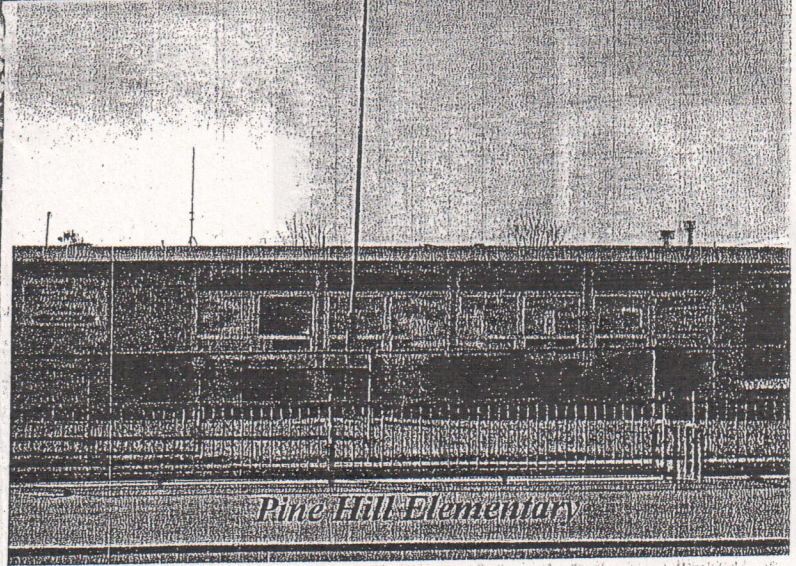


Supervisors Jimmy Smith, Mark Lovelace & Cliff Clendenen voted for a new Housing Plan in Our Neighborhood!!!



Ridgewood Elementary



Pine Hill Elementary

ATTEND THE PLANNING COMMISSION MEETING ON FEB. 17TH and STOP THIS FROM HAPPENING IN OUR NEIGHBORHOOD!

Thurs, Feb. 17th @ 6 PM
Supervisor's Chambers
825 5th Street
Eureka

Jimmy Smith
707-476-2391

jrsmith@co.humboldt.ca.us

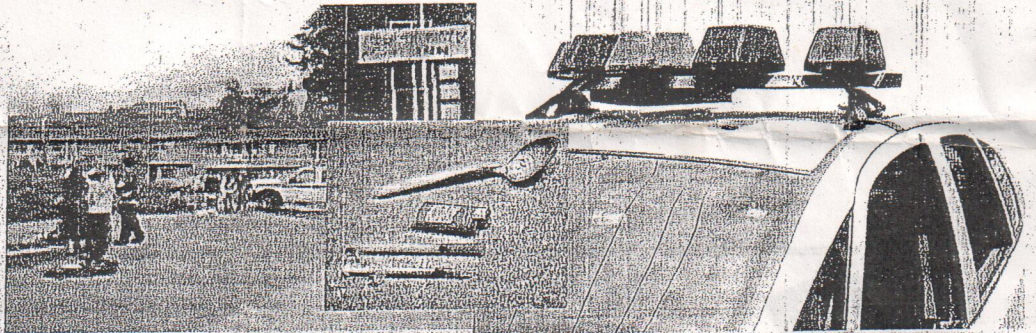
Cliff Clendenen
707-476-2392

cclendenen@co.humboldt.ca.us

Mark Lovelace
707-476-2393

mlovelace@co.humboldt.ca.us

• Halfway Houses proposed w/in 2 blocks of Elementary Schools like Ridgewood, Cutten, Pine Hill & Washington.



• Development of over 1,400 housing units & 300,000 sq. ft. of Commercial Buildings on our already congested Walnut Drive! That's 24,992 new car trips A DAY!!!



....A housing element that will significantly change our neighborhood as we know it by Supervisors who don't live anywhere near here. Of course they voted for it; it won't affect their children or quality of life.

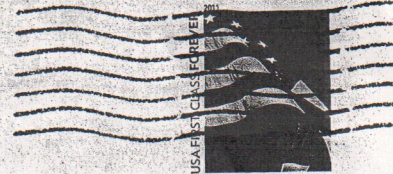
It WILL affect OURS.

Paid for by
Concerned Cutten Parents



Supervisors Jimmy Smith, Mark Lovelace & Cliff Glendon

*have a NEW PLAN
for your neighborhood...*

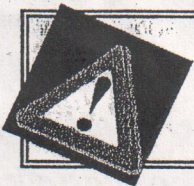


825 ~~FIFTH~~ ST # 111

EKA 95501

Davis, Judith
2250 Primrose Ave
Eureka CA 95503

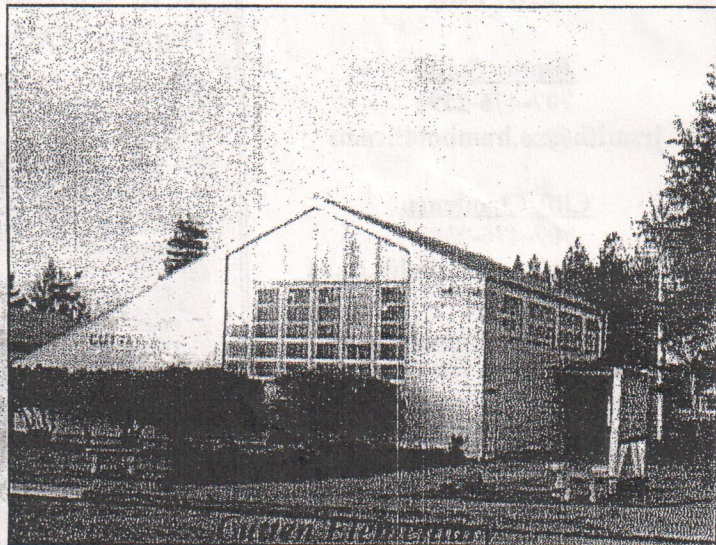
RECEIVED
BOARD OF SUPERVISOR
FEB 23 2011



IMPORTANT INFORMATION ABOUT YOUR CHILD'S SAFETY!



Washington Elementary



Washington Elementary