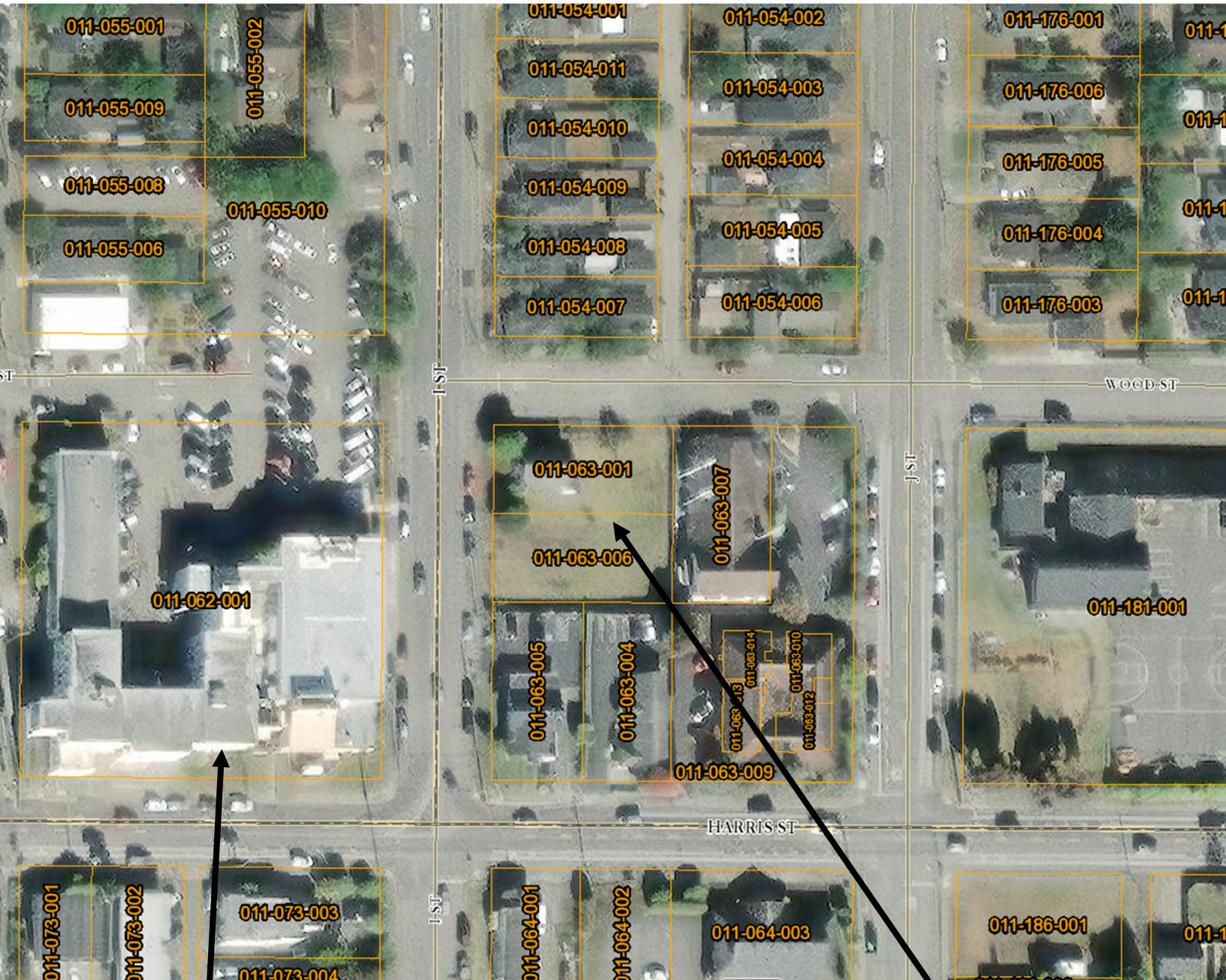


# 3007 & 3015 I Street/APN: 011-063-001 & 011-063-006 Maps and Photographs



Clark Complex  
County Owned

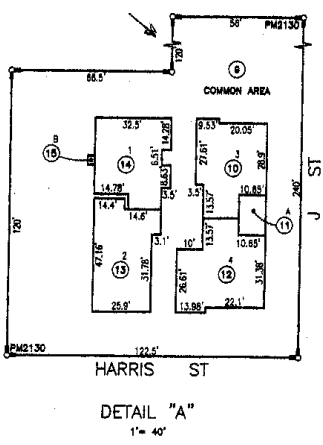
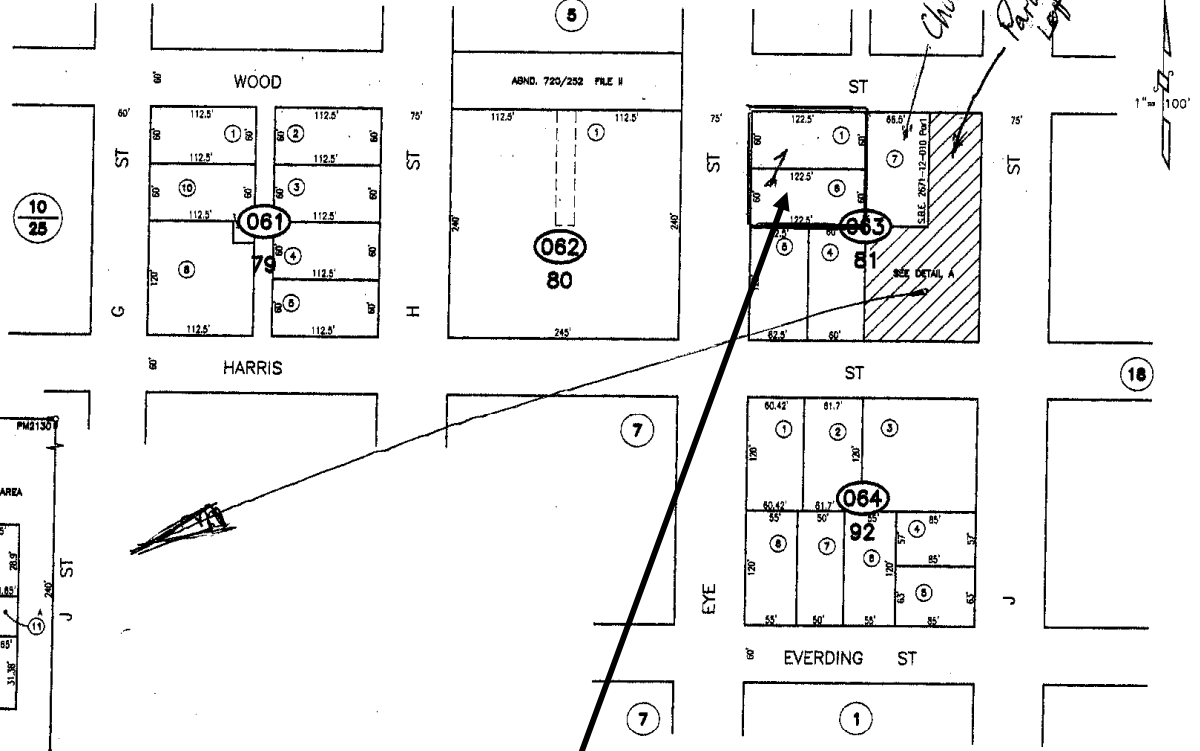
3007 & 3015 I St

Aerial View

**ASSESSOR'S PARCEL MAP**  
 1. THIS MAP WAS PREPARED FOR ASSESSMENT PURPOSES ONLY.  
 2. NO LIABILITY IS ASSUMED FOR THE ACCURACY OF THE DATA SHOWN.  
 3. ASSESSOR'S PARCELS MAY NOT COMPLY WITH LOCAL LOT-SPLIT OR BUILDING SITE ORDINANCES.

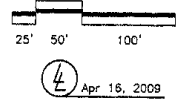
**CITY OF EUREKA**

11-06



RM, Bk 5 of MAPS, Pg 62  
 "Pralie Add'n, Amended"  
 PM2130 of PM Bk 18, Pgs 134-135

NOTE - Assessor's Block Numbers Shown in Ellipses  
 Assessor's Parcel Numbers Shown in Circles.  
 Assessor's Map Bk. 11, Pg.06  
 County of Humboldt, CA.



**Assessor Parcel Map**  
**APNs: 011-063-001 & 011-063-006**