



**WILDFLOWER PLANTING**  
**OPTIONAL GATEWAY**  
**MONUMENT INSTALLATION**





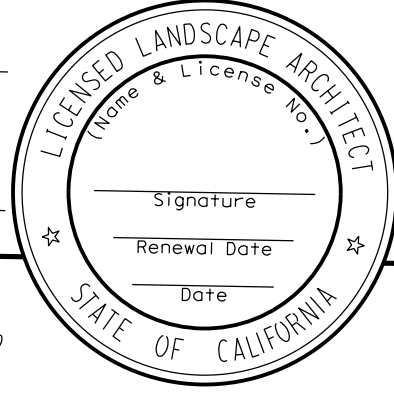
**HERRICK AVENUE  
WILDFLOWER PLANTING &  
GATEWAY MONUMENT CONCEPT**



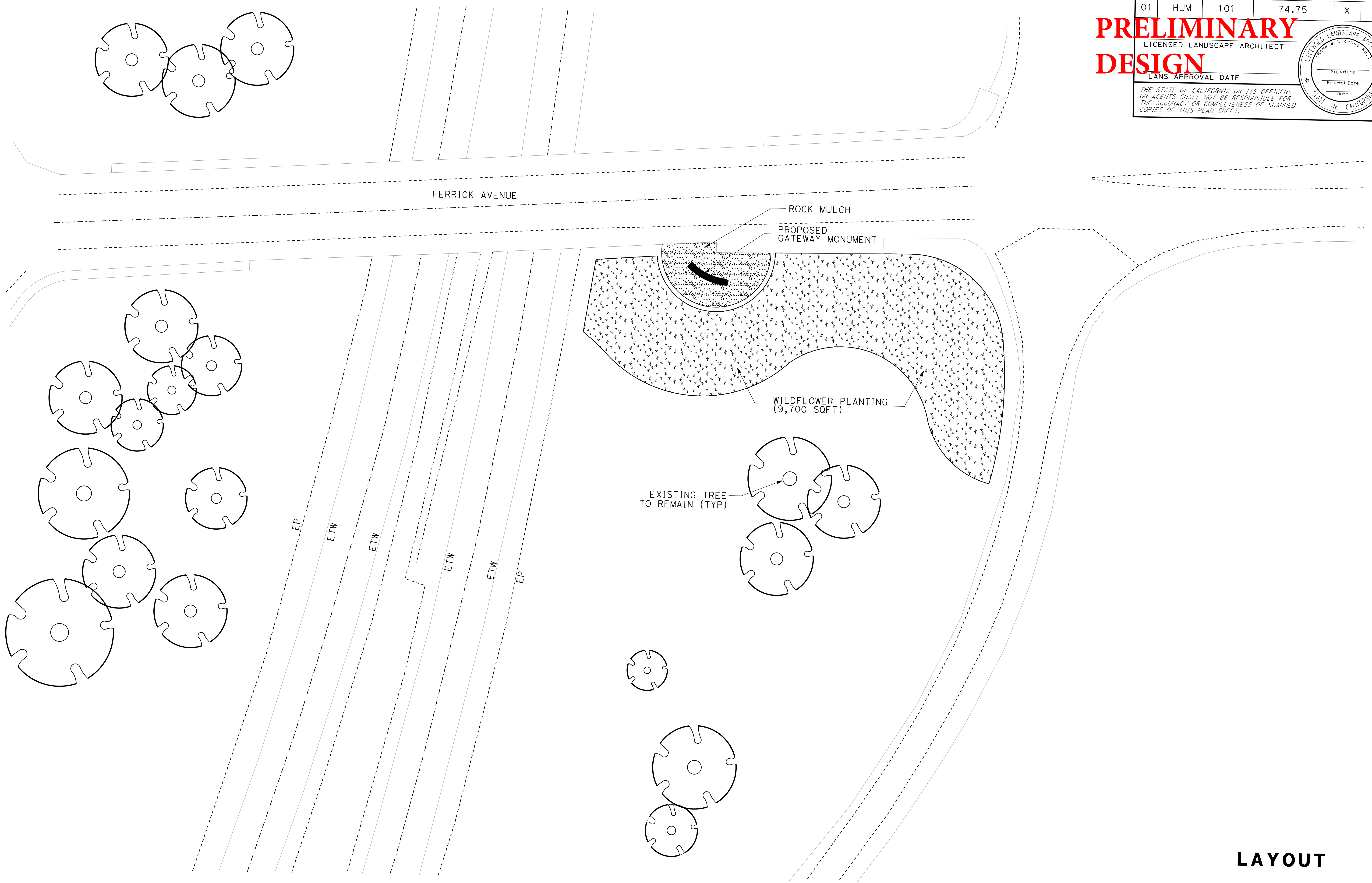
Dist	COUNTY	ROUTE	POST MILES TOTAL PROJECT	SHEET No.	TOTAL SHEETS
01	HUM	101	74.75	X	XX

**PRELIMINARY DESIGN**

LICENSED LANDSCAPE ARCHITECT  
 PLANS APPROVAL DATE  
 THE STATE OF CALIFORNIA OR ITS OFFICERS OR AGENTS SHALL NOT BE RESPONSIBLE FOR THE ACCURACY OR COMPLETENESS OF SCANNED COPIES OF THIS PLAN SHEET.



STATE OF CALIFORNIA - DEPARTMENT OF TRANSPORTATION	SENIOR LANDSCAPE ARCHITECT	CALCULATED-DESIGNED BY	REVISOR BY
<b>Caltrans</b>	CHECKED BY	DATE REVISOR	



**LAYOUT**

SCALE: 1" = 20' **L-1**

PRODUCT: Q-9S

WEIGHT: 2,689 lbs.  
(CUSTOMER TO OFFLOAD IF OVER 6000 Lbs.)

Authorized Signature

Date

By signing above or stamping this drawing "approved" or "no exception taken" authorization is given to QCP to produce this drawing as shown within a 1/4" tolerance.

CONCRETE COLOR:

- NATURAL
- MISSION WHITE
- CUSTOM
- FRENCH GREY
- LATTE

CONCRETE TEXTURE:

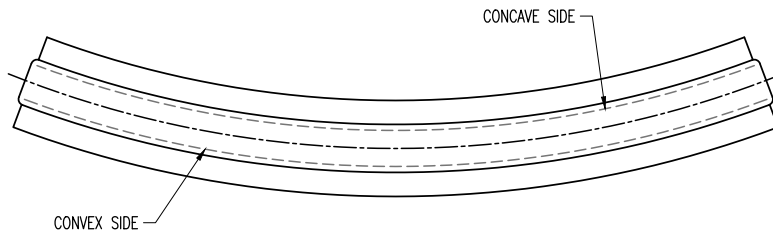
- CRAFTSMANS ETCH
- STRATA
- HONED

QUANTITY: \_\_\_\_\_

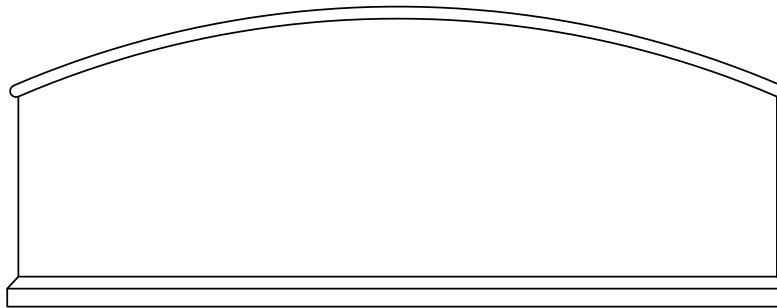
SEALER: PERMASHIELD 4200 SEALER

GENERAL PRODUCT NOTES:

- E = EXPOSED FINISHED SURFACE
- INSTALLATION IS REQUIRED BY OTHERS.
- ALL EDGES TO BE EASED.
- MANUFACTURING TOLERANCE ±1/4".
- ANCHORING METHOD BY OTHERS



PLAN VIEW



UNFOLDED ELEVATION VIEW



www.qcp-corp.com

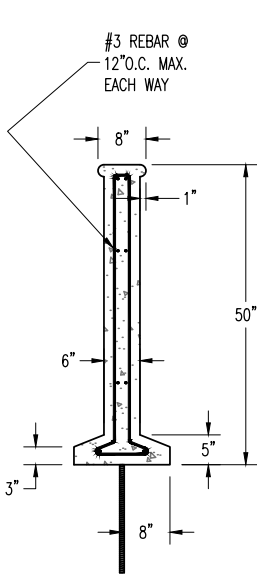
PLAN TYPE	GRAPHIC PLAN	DATE	6/19/23	FILE NO.	Q-9S-1	SHEET	1
	PRODUCT	Q-9S   MONUMENT SIGN   SIGNAL LARGE	SCALE	3/8" = 1'	DRAWN BY:	----	OF
	PROJECT NAME		PC. NO.		QC ITEM NO.		3

QTY: \_\_\_\_

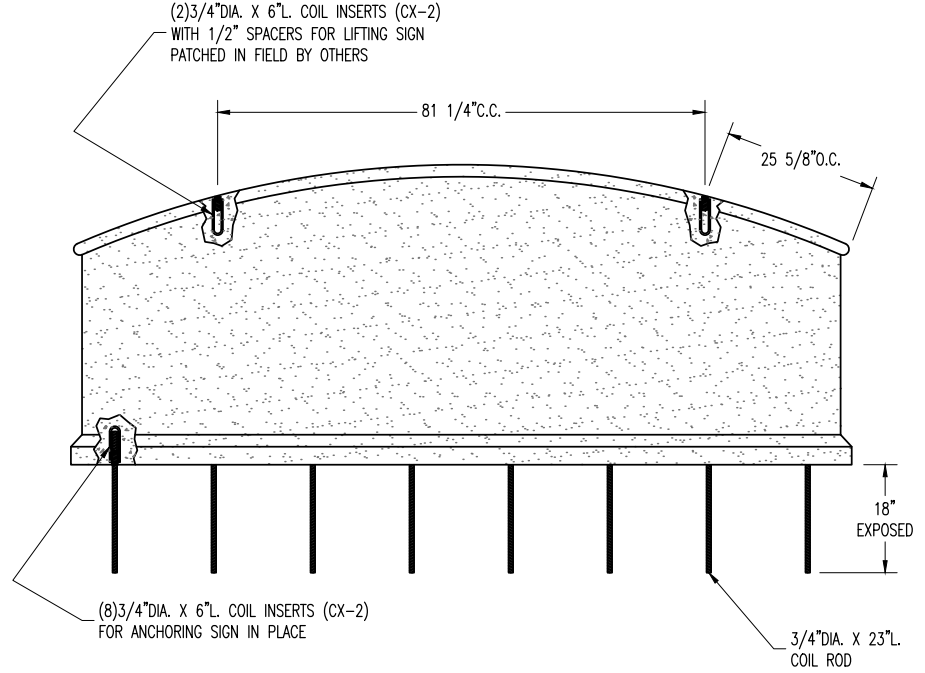
Authorized Signature \_\_\_\_\_

Date \_\_\_\_\_

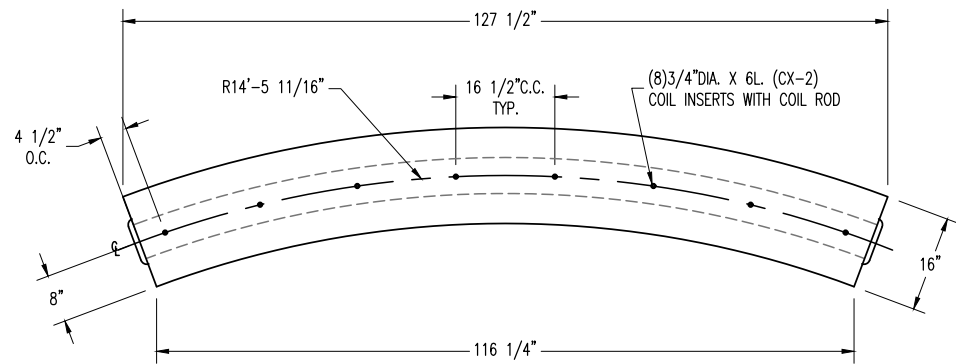
By signing above or stamping this drawing "approved" or "no exception taken" authorization is given to QCP to produce this drawing as shown within a 1/4" tolerance.



SECTION VIEW



UNFOLDED ELEVATION VIEW



BOTTOM VIEW



PLAN TYPE	CONSTRUCTION PLAN	DATE	FILE NO.	SHEET
	Q-9S   MONUMENT SIGN   SIGNAL LARGE	6/19/23	Q-9S-2	2
	PROJECT NAME	SCALE	DRAWN BY:	OF
		3/8" = 1'	----	3
		PC. NO.	QC ITEM NO.	

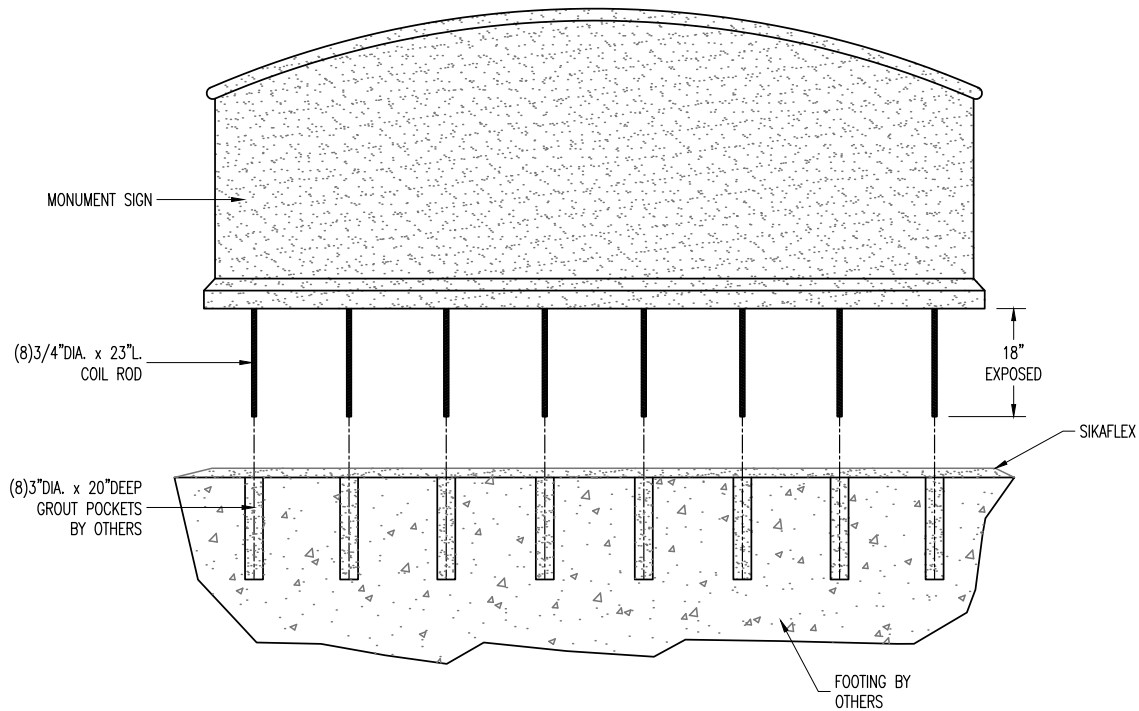
### INSTALLATION NOTES:

1. CAST-IN OR CORE DRILL (8) 3/4" DIA. x 22" DEEP GROUT POCKETS INTO FOOTING PER ANCHOR BOLT PATTERN. (SEE PLAN BELOW)
2. TAKE (8) 3/4" DIA. x 23" L. LONG COIL RODS AND THREAD 5" INTO (8) 3/4" DIA. COIL INSERTS, LEAVING 18" OF THE COIL ROD EXPOSED.
3. FILL ALL GROUT POCKETS W/ NON-SHRINK GROUT AND POUR EPOXY ON THE FOOTING WHERE SIGN WILL BE PLACED. INSERT SIGN W/ COIL RODS INTO GROUT POCKETS.
4. SUGGESTED ANCHORING METHOD NOT CALCULATED. PLEASE CONSULT STRUCTURAL ENGINEER.
5. FOOTING & INSTALLATION BY OTHERS.

Authorized Signature \_\_\_\_\_

Date \_\_\_\_\_

By signing above or stamping this drawing "approved" or "no exception taken" authorization is given to QCP to produce this drawing as shown within a 1/4" tolerance.



ELEVATION VIEW/INSTALLATION VIEW

HARDWARE LIST	
QTY	TYPE
8	3/4" DIA. X 23" L. COIL ROD
1	SIKAFLEX
1	PATCH KIT

 www.qcp-corp.com	PLAN TYPE	INSTALLATION PLAN	DATE	FILE NO.	SHEET
	PRODUCT	Q9-S   MONUMENT SIGN   SIGNAL LARGE	6/19/23	Q-9S-3	3
	PROJECT NAME		SCALE	DRAWN BY:	OF
			3/8" = 1'	----	3
			PC. NO.	QC ITEM NO.	