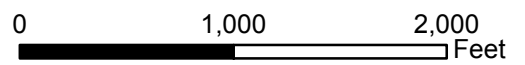
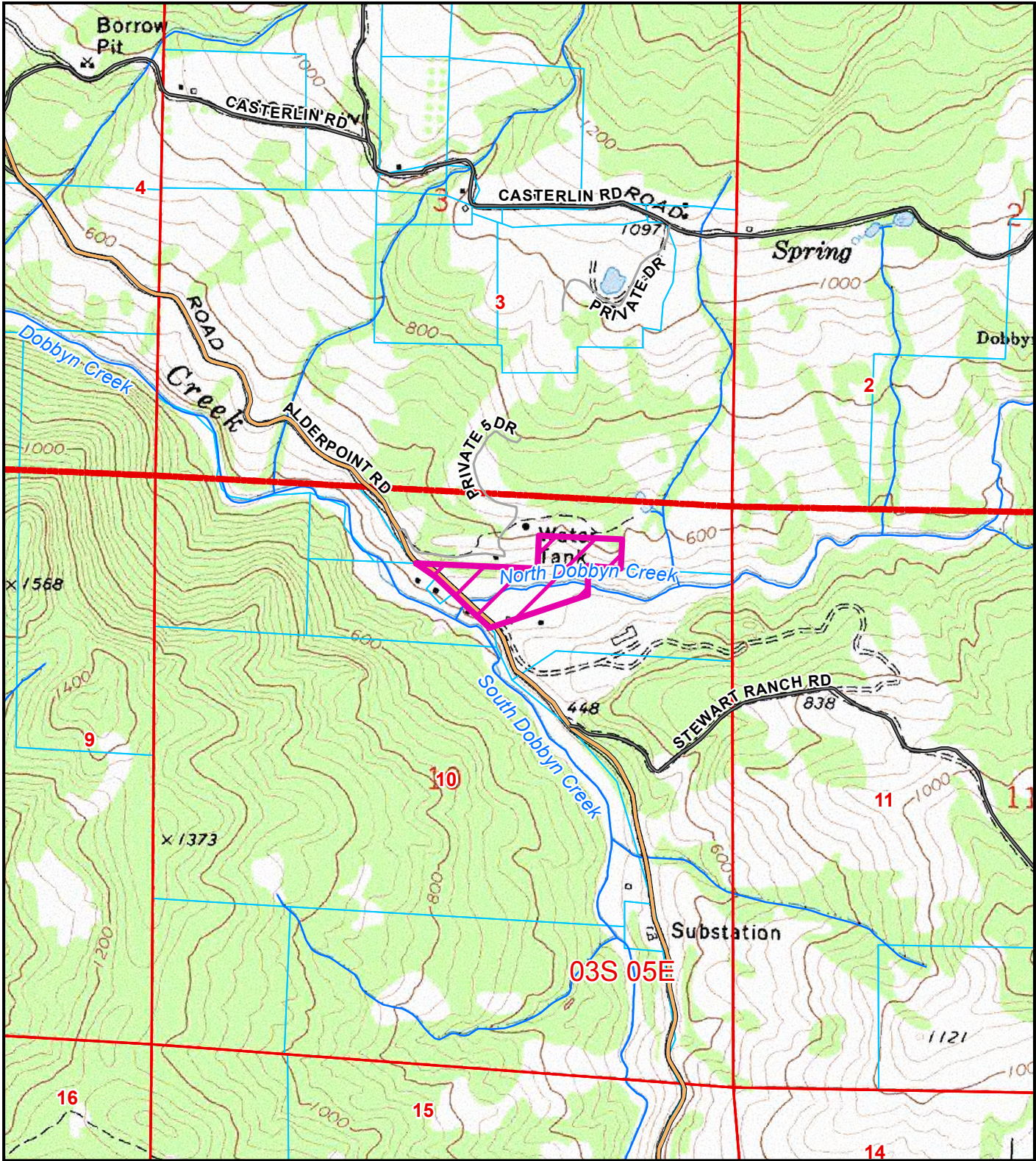


AERIAL MAP
PROPOSED DOBBYN CREEK PHARMS, LLC
ALDERPOINT AREA
CUP-16-446
APN: 216-317-006-000
T03S R05E S10 HB&M (ALDERPOINT)

Project Area = 

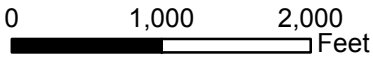


This map is intended for display purposes and should not be used for precise measurement or navigation. Data has not been completely checked for accuracy.

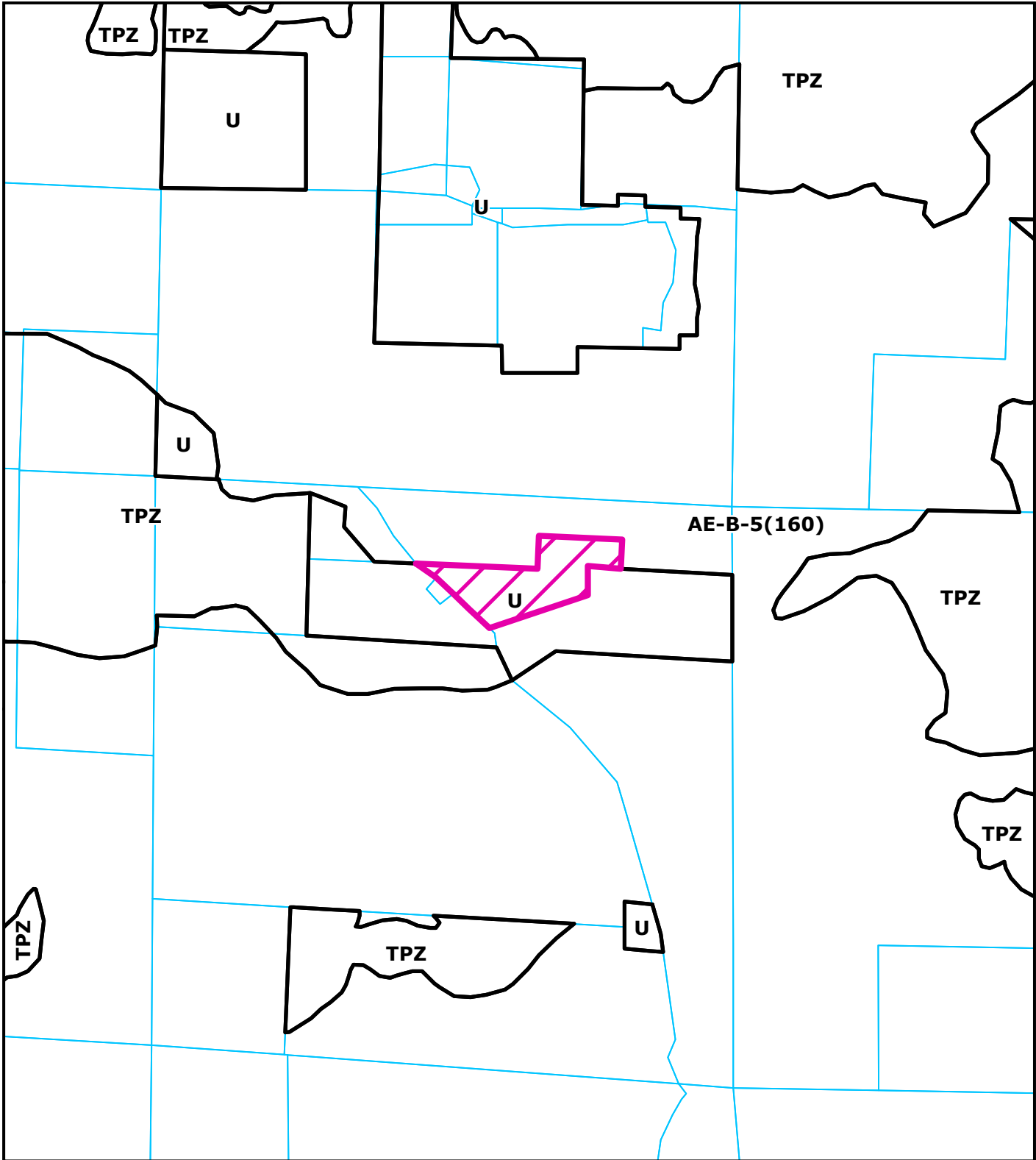


TOPO MAP
PROPOSED DOBBYN CREEK PHARMS, LLC
ALDERPOINT AREA
CUP-16-446
APN: 216-317-006-000
T03S R05E S10 HB&M (ALDERPOINT)

Project Area =

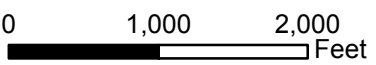


This map is intended for display purposes and should not be used for precise measurement or navigation. Data has not been completely checked for accuracy.



Project Area = 

ZONING MAP
PROPOSED DOBBYN CREEK PHARMS, LLC
ALDERPOINT AREA
CUP-16-446
APN: 216-317-006-000
T03S R05E S10 HB&M (ALDERPOINT)



This map is intended for display purposes and should not be used for precise measurement or navigation. Data has not been completely checked for accuracy.