



**PROJECT DATA**

CLIENT: COSTCO WHOLESALE  
999 LAKE DRIVE  
ISSAQUAH, WA 98027

PROJECT ADDRESS: 1006 W. WABASH AVE.  
EUREKA, CA 95501

ZONING: M.G. GENERAL INDUSTRIAL

SITE AREA: 9.53 ACRES (415,126 S.F.)

JURISDICTION: CITY OF EUREKA, CA  
HUMBOLDT COUNTY

SETBACKS: FRONT: 10FT. ON WABASH

**BUILDING DATA:**

EXISTING BUILDING AREA	116,018 S.F.
EXISTING TIRE CENTER	5,184 S.F.
TOTAL EXISTING BUILDING	121,202 S.F.

**NEW BUILDING DATA:**

NEW BUILDING AREA	3,102 S.F.
TOTAL EXISTING BUILDING AREA	121,202 S.F.
TOTAL NEW BUILDING AREA	124,304 S.F.

**PARKING DATA:**

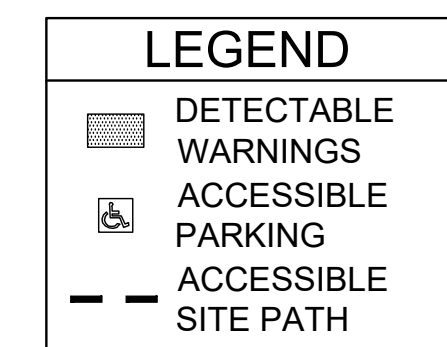
PARKING PROVIDED:

10' WIDE STALLS	288 STALLS
9' WIDE STALLS	175 STALLS
HANDICAP STALLS	12 (3 VAN) STALLS
TOTAL PARKING	475 STALLS

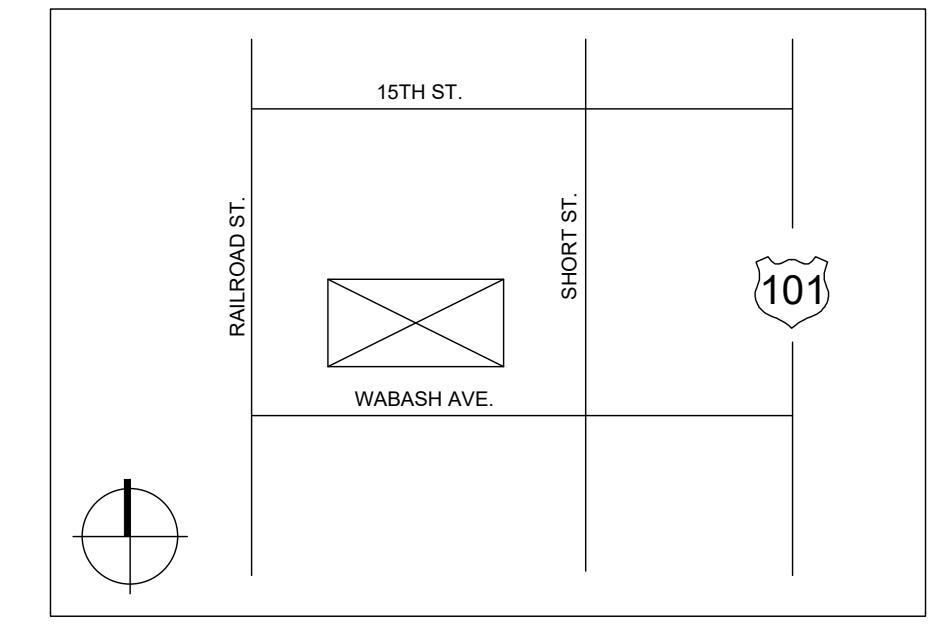
**NEW PARKING DATA:**

10' WIDE STALLS	288 STALLS
9' WIDE STALLS	166 STALLS
HANDICAP STALLS	12 (3 VAN) STALLS
TOTAL PARKING	466 STALLS

NOTES:  
EXISTING CONDITIONS TO BE FIELD VERIFIED.



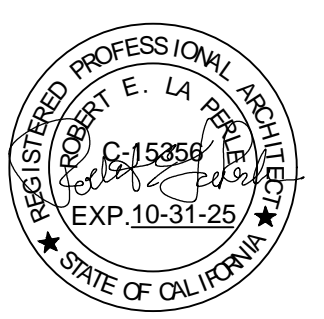
**VICINITY MAP**



**SITE ACCESSIBILITY NOTES**

- THE CONTRACTOR IS REQUIRED TO SURVEY AND VERIFY THE FOLLOWING REQUIREMENTS ARE EXISTING AND NOTIFY THE OWNER AND PROVIDE A COST TO INCLUDE WORK TO MAKE NEEDED REPAIRS TO COMPLY FOR THE COSTCO SITE AREA ONLY.
- THE WORDS "NO PARKING" SHALL BE PAINTED ON THE GROUND WITHIN EACH LOADING AND UNLOADING ACCESS AISLE IN WHITE LETTER NO LESS THAN 12" HIGH AND LOCATED SO THAT IT IS VISIBLE TO TRAFFIC ENFORCEMENT OFFICIALS.
  - CONFIRM MAXIMUM SLOPE OF THE PARKING SURFACE AT ACCESSIBLE SPACE AND ADJACENT AISLE. IN ANY DIRECTION, IS ≤ 1:48
  - ACCESSIBLE PARKING SPACES ARE TO BE IDENTIFIED BY A REFLECTORIZED SIGN, PERMANENTLY POSTED IMMEDIATELY ADJACENT TO AND VISIBLE FROM EACH SPACE, CONSISTING OF:
    - A PROFILE VIEW OF A WHEELCHAIR WITH OCCUPANT IN WHITE ON DARK BLUE BACKGROUND
    - THE SIGN SHALL BE MINIMUM 70" SQUARE INCHES IN AREA
    - ADDITIONAL LANGUAGE OR SIGN BELOW THE SYMBOL OF ACCESSIBILITY STATING "MINIMUM FINE \$250
    - WHEN IN THE PATH OF TRAVEL, THEY SHALL BE POSTED 80" MINIMUM FROM THE BOTTOM OF THE SIGN TO PARKING SPACE FINISHED GRADE
    - SIGNS MAY ALSO BE CENTERED ON THE WALL OF THE INTERIOR END OF THE PARKING SPACE
    - VAN-ACCESSIBLE SPACES SHALL HAVE AN ADDITIONAL SIGN "VAN-ACCESSIBLE" MOUNTED BELOW THE SYMBOL OF ACCESSIBILITY
    - THE SURFACE OF EACH ACCESSIBLE SPACE IS REQUIRED TO BE MARKED WITH THE INTERNATIONAL SYMBOL OF ACCESSIBILITY
  - AN ADDITIONAL SIGN SHALL ALSO BE POSTED IN A CONSPICUOUS PLACE AT EACH ENTRANCE TO OFF STREET PARKING FACILITIES, OR IMMEDIATELY ADJACENT TO AND VISIBLE FROM EACH STALL OR SPACE. THE SIGN SHALL BE MINIMUM 17"x22" WITH LETTERING NOT LESS THAN 1" IN HEIGHT. THE REQUIRED WORDING IS AS FOLLOWS  
*"UNAUTHORIZED VEHICLES PARKED IN DESIGNATED ACCESSIBLE SPACES NOT DISPLAYING DISTINGUISHED PLACECARDS OR SPECIAL LICENSE PLATES ISSUED FOR PERSONS WITH DISABILITIES WILL BE TOWED AWAY AT OWNER'S EXPENSE. TOWED VEHICLES MAY BE RECLAIMED AT \_\_\_\_\_ OR BY TELEPHONING \_\_\_\_\_"*
- \*BLANK SPACES SHALL BE FILLED WITH APPROPRIATE INFORMATION AS A PERMANENT PART OF THE SIGN
- VERIFY ALL CURB RAMPS ARE CONSTRUCTED WHERE PEDESTRIAN WAY CROSSES A CURB
  - VERIFY CURB RAMPS AND MINIMUM 48" WIDE WITH A SLOPE OF MAXIMUM 1:12 (8.33%)
  - VERIFY LANDINGS AT THE TOP OF THE CURB SHALL BE LEVEL AND MINIMUM 48" DEPTH FOR THE ENTIRE WIDTH OF THE CURB RAMP.
  - THE SLOPE OF THE FANNED OR FLARED SIDES OF CURB RAMPS SHALL NOT EXCEED 1:10
  - DETECTABLE WARNINGS, 36" DEEP AND EXTENDING THE FULL WIDTH OF THE CURB RAMP, ARE TO BE INSTALLED FOR ALL CURB RAMPS (REGARDLESS OF SLOPE). ONLY APPROVED DSA/AC DETECTABLE WARNING PRODUCTS AND DIRECTIONAL SURFACES SHALL BE INSTALLED.
  - WALKS ALONG AN ACCESSIBLE ROUTE OF TRAVEL ARE REQUIRED TO BE 48" MINIMUM IN WIDTH AND HAVE SLIP RESISTANT SURFACES.
  - THE MAXIMUM PERMITTED CROSS SLOPE FOR WALKWAYS SHALL BE 1:48
  - VERIFY THAT ALL ABRUPT LEVEL CHANGES WILL BE 1/2" MAXIMUM ALONG ANY ACCESSIBLE ROUTE OF TRAVEL. WHEN CHANGES DO OCCUR THEY SHALL BE BEVELED WITH A SLOPE OF 1:2 MAXIMUM. LEVEL CHANGES OF 1/4" MAXIMUM MAY BE VERTICAL. IF LEVEL CHANGES OF 1/2" OR MORE, THEY MUST COMPLY WITH THE REQUIREMENTS OF RAMPS.
  - VERIFY THAT A 60"x60" LEVEL AREA IS PROVIDED AT AREAS WHERE A DOOR (OR GATE) SWINGS TOWARD THE WALK IN THE ACCESSIBLE ROUTE OF TRAVEL. THE WALK MUST EXTEND 24" MINIMUM BEYOND THE STRIKE EDGE OF ANY DOOR (OR GATE) THAT SWINGS TOWARD THE WALK
  - DETECTABLE WARNING SURFACES SHALL BE YELLOW CONFORMING TO F3 33538 OF FEDERAL STANDARD 595C.
  - DETECTABLE WARNING SURFACES SHALL CONTRAST VISUALLY WITH ADJACENT WALKING SURFACES EITHER LIGHT-ON-DARK OR DARK-ON-LIGHT. THE MATERIAL USED TO PROVIDE CONTRAST SHALL BE AN INTEGRAL PART OF THE SURFACE.
  - ONLY APPROVED DSA-AC DETECTABLE WARNING PRODUCTS AND DIRECTIONAL SURFACES SHALL BE INSTALLED AS PROVIDED IN THE CALIFORNIA CODE OF REGULATIONS TITLE 24, PART 1, CHAPTER 5, ARTICLE 2, 3, AND 4.
  - IF THE CITY BUILDING INSPECTOR DETERMINES NON-COMPLIANCE WITH ANY ACCESSIBILITY PROVISIONS, A COMPLETE AND DETAILED REVISED PLANS CLEARLY SHOWING ALL EXISTING NON-COMPLYING CONDITIONS AND THE PROPOSED MODIFICATIONS TO MEET CURRENT ACCESSIBILITY REQUIREMENTS (INCLUDING SITE PLAN, FLOOR PLANS, DETAILS, ETC.) WILL BE SUBMITTED TO THE DEPARTMENT FOR REVIEW AND APPROVAL.

COSTCO #125  
1006 W WABASH AVE, EUREKA, CA 95501  
**FRESHLINE REMODEL AND COOLERS ADDITION**



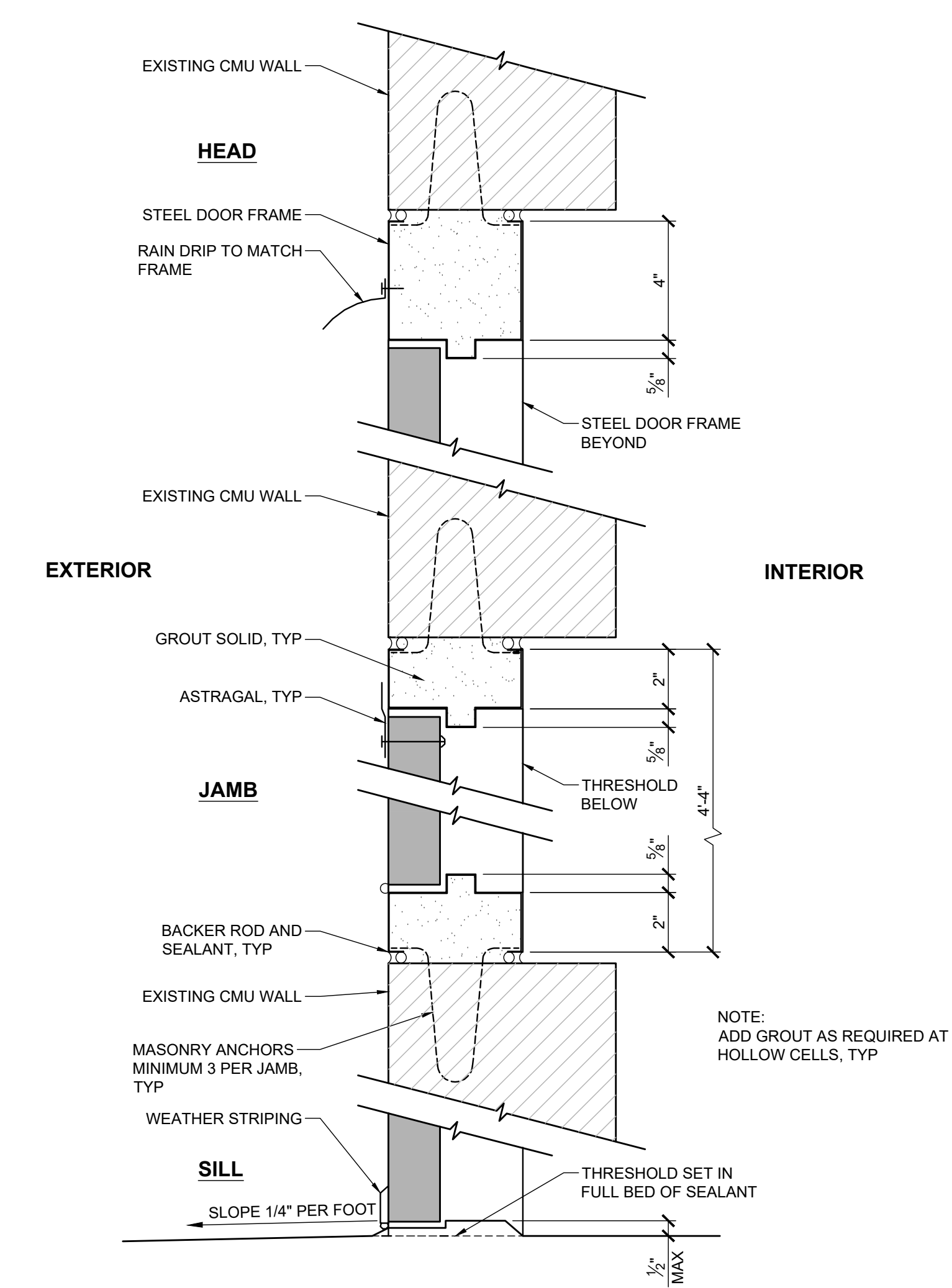
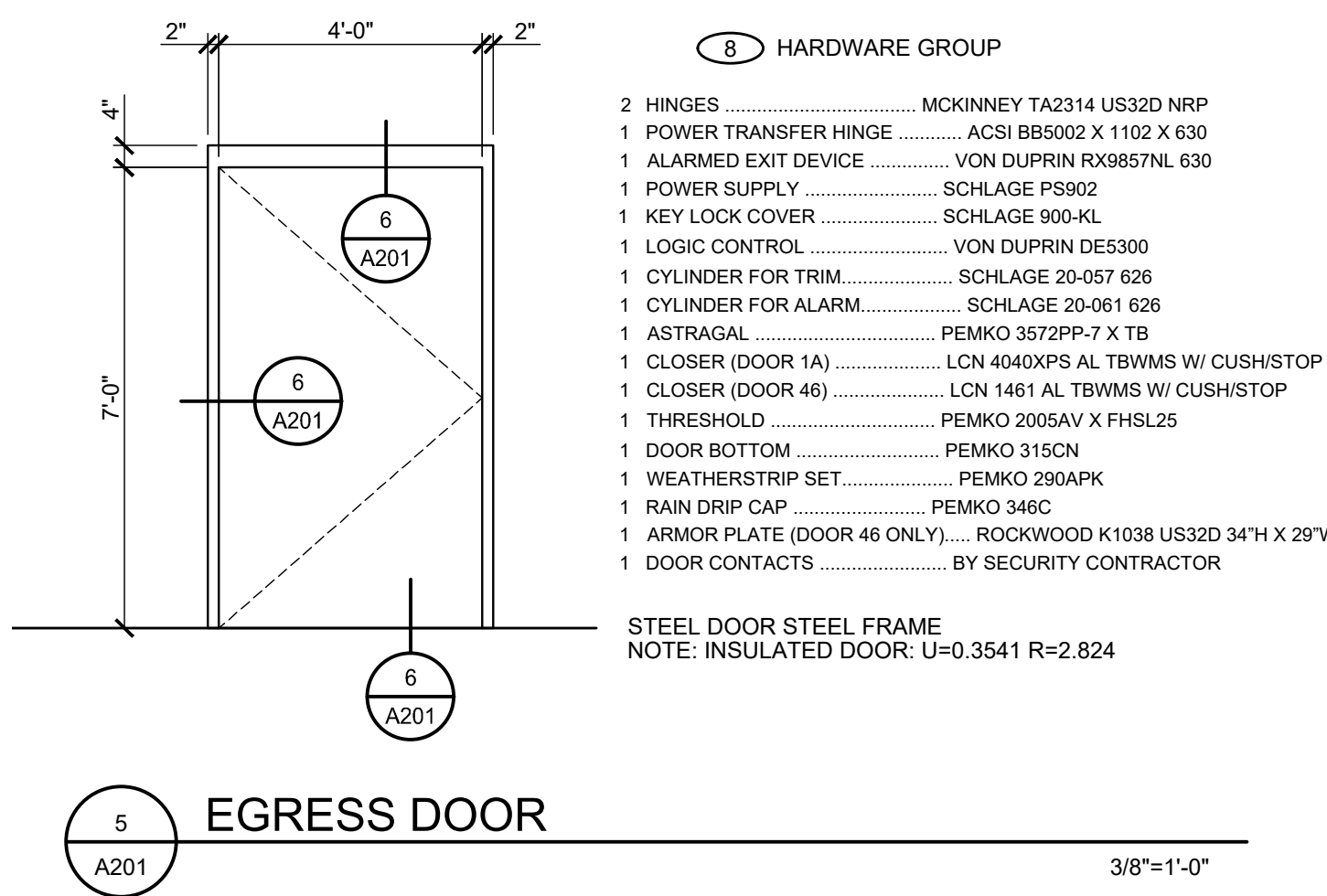
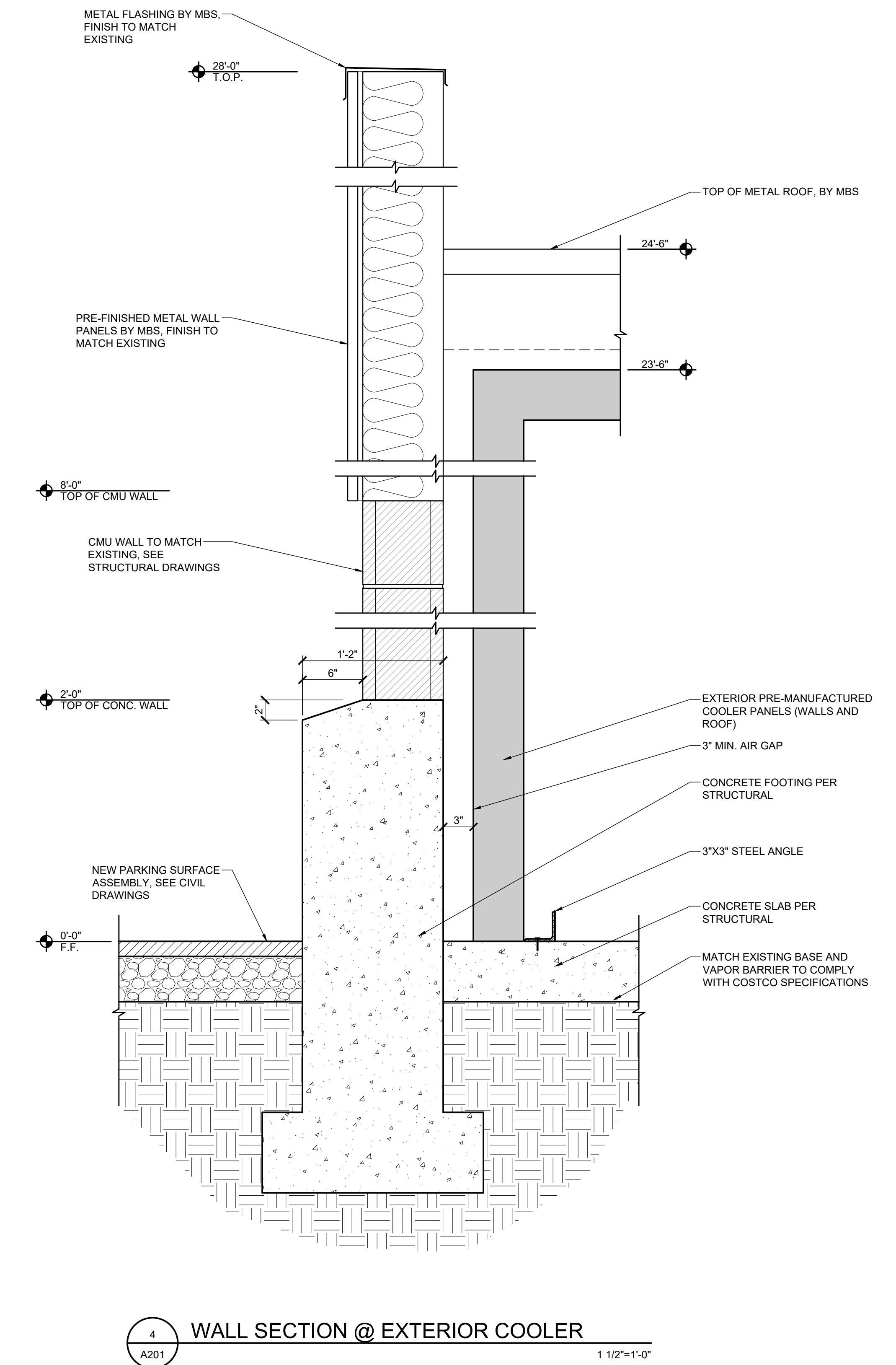
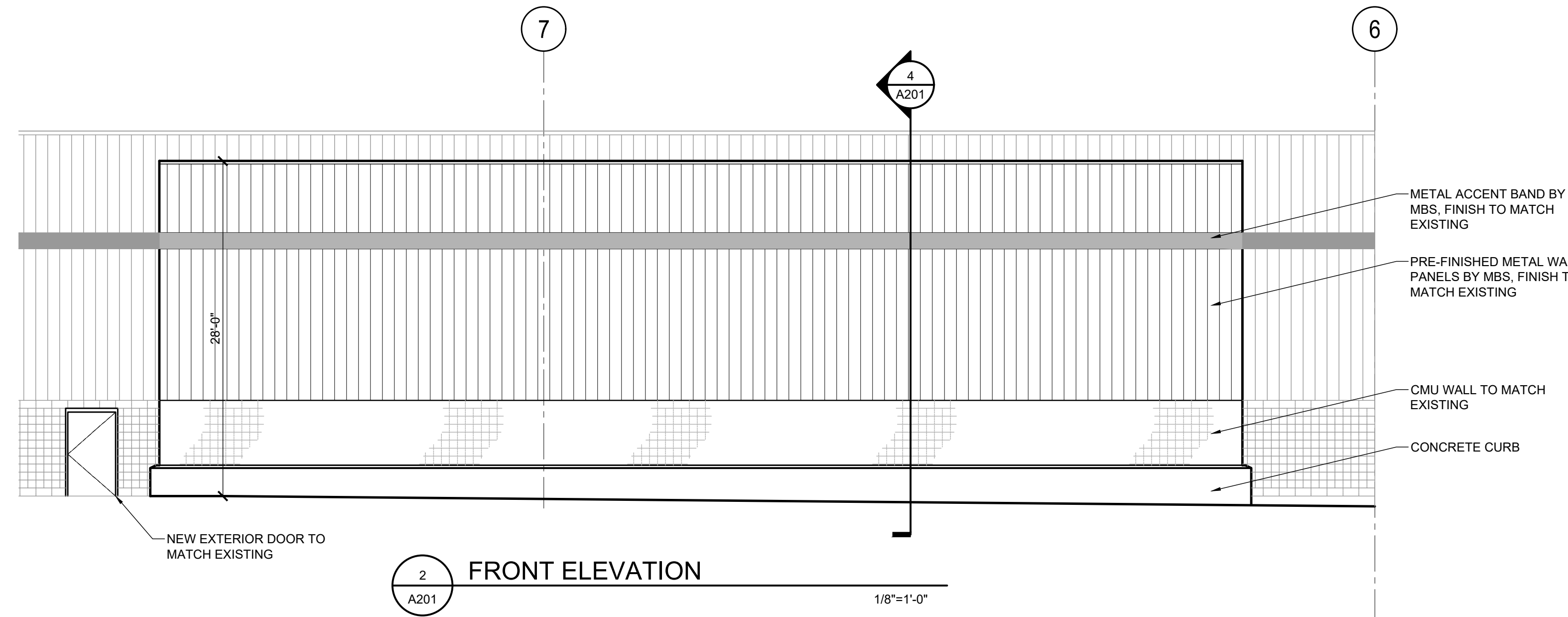
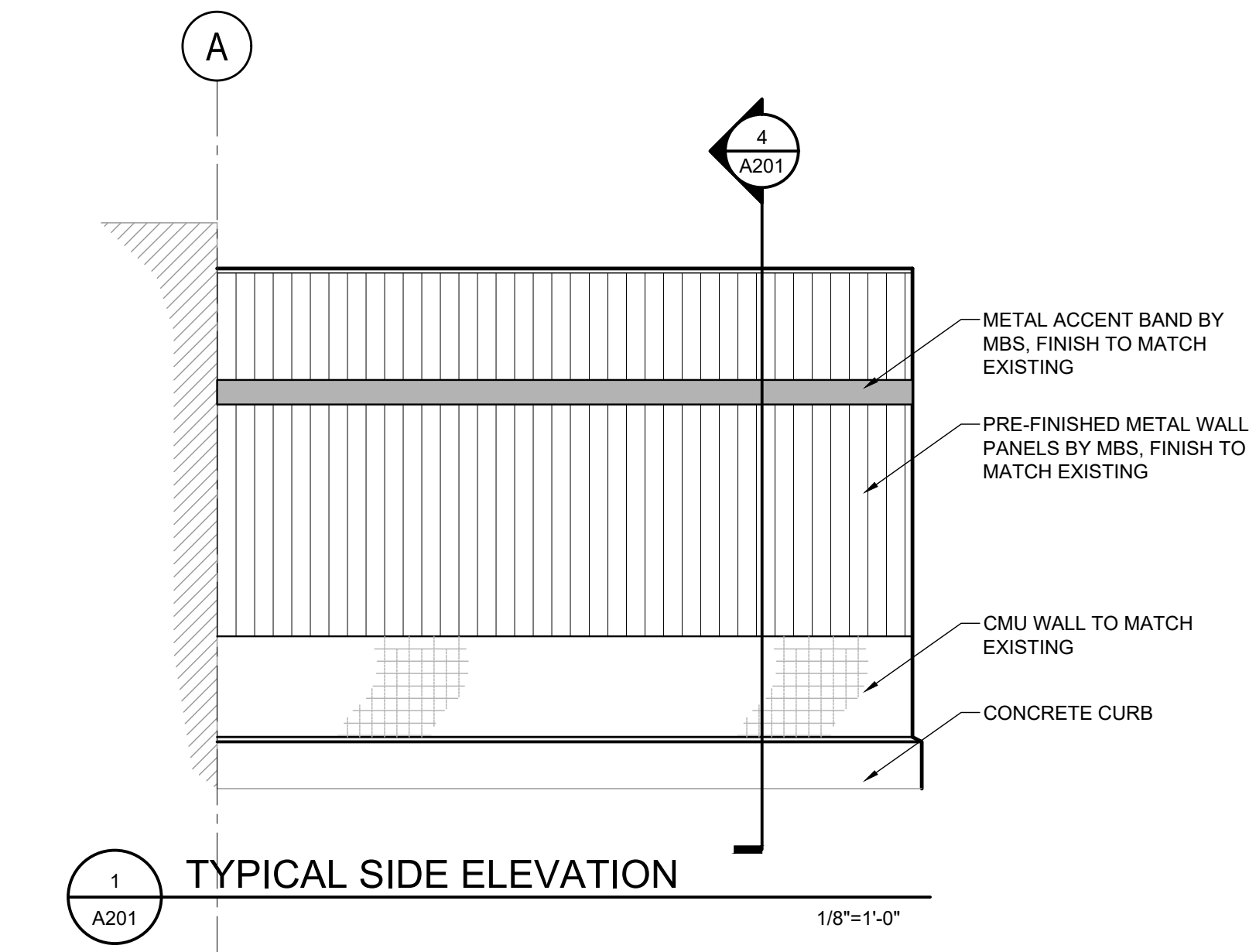
© 2024 | ALL RIGHTS RESERVED

CONSTRUCTION DOCUMENTS

10.25.2024  
PROJECT # | COSTCO0125-03  
DRAWN BY | WOLFDIVED  
CHECKED BY | SANCHEZ  
REVISIONS

SITE PLAN

**G3**



COSTCO #125  
1006 W WABASH AVE, EUREKA, CA 95501  
**FRESHLINE REMODEL AND COOLERS ADDITION**



© 2024 | ALL RIGHTS RESERVED

CONSTRUCTION DOCUMENTS

10.25.2024  
PROJECT # | COSTCO0125-03  
DRAWN BY | WOLDTIVED  
CHECKED BY | SANCHEZ  
REVISIONS

EXTERIOR ELEVATION & DETAILS

**A201**

EQUIPMENT LIST					
EQ. #	DESCRIPTION	MAKE/MODEL	MODEL #	SUPPLY/INSTALL	REMARKS
001	DETERGENT PACKAGES	KAY	EXACTA SYSTEM	SIV	
002	2-COMPARTMENT SINK	SPG	2SL243015-2D24PC	SOIC	WALL FLASHING (SIZED TO SINK)
004	HAND WASH SINK	SPG	WMHS-1412-ES-PC	SOIC	WI KNEE VALVE
005	SOAP DISPENSER	PER OWNER	PER OWNER	SIO	
006	WALL FLASHING (SIZED TO SINK)	SPG	WF-(SEE UNIT SIZE)	SOIC	GC TO ADHERE TO WALL
008	HOSE REEL	COXREELS	P-LP-3XX	SOIC	MODEL PER LOCATION
012	PAPER TOWEL DISPENSER	GP - MARATHON	7808018	SOIC	WALL MOUNTED
016	INSECT LIGHT	ECOLAB	STEALTH MAXIMA	SIV	MGR COORD INSTALL
018	FOAM HOSE REEL	COXREELS	P-LP-3XX	SIO	MODEL PER LOCATION
019	FOAMER	KAY	CHEMICAL FOAMER	SOIC	
300	MIXER/GRINDER	BIRO	AFMG-52	SIV	(1) FUTURE
301	CUTTING TABLES	SPG	8MCT-30-PC	SIO	
302	MEAT TENDERIZER	ROSS	TC700NCC-CA	SOIC	
303	MEAT SAW	BIRO	3334SS-4003FH	SIV	
304	MEAT SLICER	PUMA	F/FB - E/EB	SOIC	OPTIONAL
308	FAT TESTER	DATA SUPPORT	HFT-3000F	SIO	LOCATE IN STEEL
310	WRAP STATION - PRINTER, LABELER	DIGI	AW-5600AT	SIV	
311	HAND WRAP	DIGI	DIGI HAND WRAP STATION	SIV	
312	DELI SCALES AND PRINTERS	DIGI	SM5500A	SIV	LOCATE IN STEEL
318	150" POWER SOAK SINK	BH-LINE CONVEYOR	VORTEX WASH	SOIC	WALL FLASHING (SIZED TO SINK)
319	1-COMPARTMENT SINK	SPG	PC-SKU1-003104-01	SOIC	WALL FLASHING (SIZED TO SINK)
403	166" POWER SOAK SINK	BH-LINE CONVEYOR	VORTEX WASH	SOIC	WALL FLASHING (SIZED TO SINK)
406	SKEWER CLEANING SINK	POWERSOAK	PS6526	SOIC	(POWER SOAK)
411	PREP TABLE / SINK	SPG	PC-1N181815-LRU	SOIC	WALL FLASHING (SIZED TO SINK)
413	DISPLAY CASE (3-TIER)	HARDT	3-TIER ZONE 8	SOIC	
415	COMBI OVEN	ELOMA	GENIUS T 6-11	SOIC	STACK UNITS
417	ROTISSERIE OVENS	HARDT	INF-4500	SOIC	STACK UNITS
418	VENT HOODS	CAPTIVEAIRE		SOIC	FIRE SUPPRESSION SYSTEM BY GC
426	BLAST CHILLER	HURRICHELL	AP20BCF200-3	SOIC	
427	SHELVING UNIT	METRO	METRO MAX I	SIO	
429	SCALES / PRINTERS	HOBART	HTI SERIES	SIV	
430	FOOD PROCESSOR	HOBART	FP250	SIO	
435	ENCLOSED BASE PRINTER TABLE - 2'	LEGGETT & PLATT	PC-2CBT-30BDC	SIO	
436	ENCLOSED BASE PRINTER TABLE - 4'	SPG	4CBT-30B-C	SIO	
438	TABLE - 6"	SPG	PC-6SLB-30	SIO	
439	TABLE - 8"	SPG	PC-8SLB-36-C-01	SIO	
440	WORK TABLE	SPG	PC-8SLC-30-PB	SIO	
445	GREASE TRANSFER CART	MARENGO	175# GREASE CADDY	SIO	
446	SKEWER HANGING RACK	HARDT	1436	SOIC	WALL MOUNTED

SUPPLY/INSTALL ABBREVIATIONS

SIO SUPPLIED AND INSTALLED BY OWNER  
SIV SUPPLIED AND INSTALLED BY VENDOR  
SOIC SUPPLIED BY OWNER INSTALLED BY CONTRACTOR  
SOIV SUPPLIED BY OWNER INSTALLED BY VENDOR

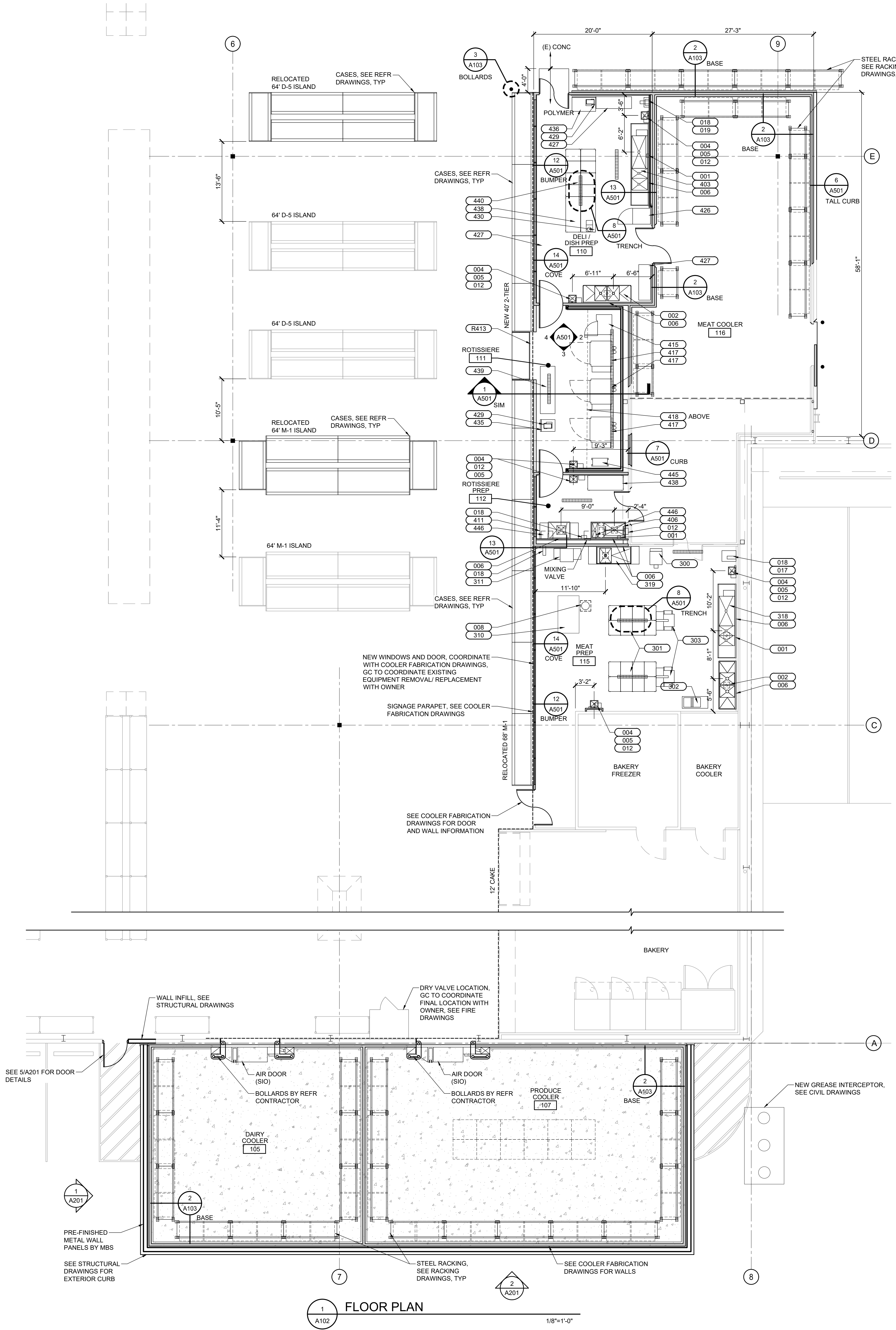
NOTE:

- EQUIPMENT STARTING WITH R WILL BE RELOCATED
- EQUIPMENT STARTING WITH F WILL BE FUTURE
- EQUIPMENT SHOWN WITHOUT NUMBER OR DESCRIPTION IS EXISTING
- RELOCATED EQUIPMENT MAY NOT MATCH THE MAKE AND MODEL LISTED

ROOM FINISH SCHEDULE										
RM #	ROOM NAME	FLOOR		BASE		WALL		CEILING		HEIGHT
		MATERIAL	FINISH	MATERIAL	FINISH	MATERIAL	FINISH	MATERIAL	FINISH	
105	DAIRY COOLER	CONC	SEAL	STEEL ANGLE	SSTC / SST	MIP	ALZN	MIP	ALZN	25'-0"
107	PRODUCE COOLER	CONC	SEAL	STEEL ANGLE	SSTC / SST	MIP	ALZN	MIP	ALZN	25'-0"
110	DELI PREP	(E) CONC	PF-A	COVE	SSTC / SEALANT	MIP	ALZN	MIP	ALZN	10'-0"
111	ROTISSERIE	(E) CONC	PF-A	COVE	SSTC / SEALANT	MIP/CBD	ALZN / SST	MIP	SST	10'-0"
112	ROTISSERIE PREP	(E) CONC	PF-A	COVE	SSTC / SEALANT	MIP	ALZN	MIP	ALZN	10'-0"
115	MEAT PREP	(E) CONC	PF-A	(E) / COVE	(E) / SSTC / SEALANT	MIP	ALZN	MIP	ALZN	10'-0"
116	MEAT COOLER	(E) CONC	SEAL	(E) / STEEL ANGLE	(E) / SSTC / SST	(E) / MIP	(E) / ALZN	(E) / MIP	(E) / ALZN	21'-6" / 10'-0"

FINISH NOTE ABBREVIATION KEY

(E) EXISTING TO REMAIN  
ALZN ALUMINUM ZINC  
CONC CONCRETE  
MIP METAL INSULATED PANELS (SIO)  
PF-A POLYMER FLOORING  
PB POLYMER BASE - COVED  
SEAL SEALER  
SST STAINLESS STEEL  
SSTC STAINLESS STEEL COVED BASE



**PLAN LEGEND**

- EXISTING TO REMAIN
- DEMOLISH OR REMOVE
- CONCRETE CURB
- BUMPER RAIL
- STEEL ANGLE
- MIP PANEL WALLS AND CEILINGS SEE COOLER BOX DRAWINGS FOR MORE INFORMATION
- DETAIL OR SECTION SHEET WHERE DRAWN
- ROOM NUMBER
- EQUIPMENT NUMBER
- INTERIOR ELEVATION
- NEW CONCRETE SLAB WITH SMOOTH TROWEL FINISH

**FLOOR PLAN**

**AREA OF WORK**

COSTCO #125  
 1006 W WABASH AVE, EUREKA, CA 95501  
**FRESHLINE REMODEL AND COOLERS ADDITION**



© 2024 | ALL RIGHTS RESERVED

CONSTRUCTION DOCUMENTS

10.25.2024  
PROJECT # | COSTCO125-03  
DRAWN BY | WOLDVIEDT  
CHECKED BY | SANCHEZ  
REVISIONS

REMODEL PLANS & DETAILS

**A102**