

ATTACHMENT 1C

Site Plan

HighGrade 007

Parcel/ Property Boundary

Cobb Rd

Site Address to be posted

USGS Topographic Maps (Caltopo)

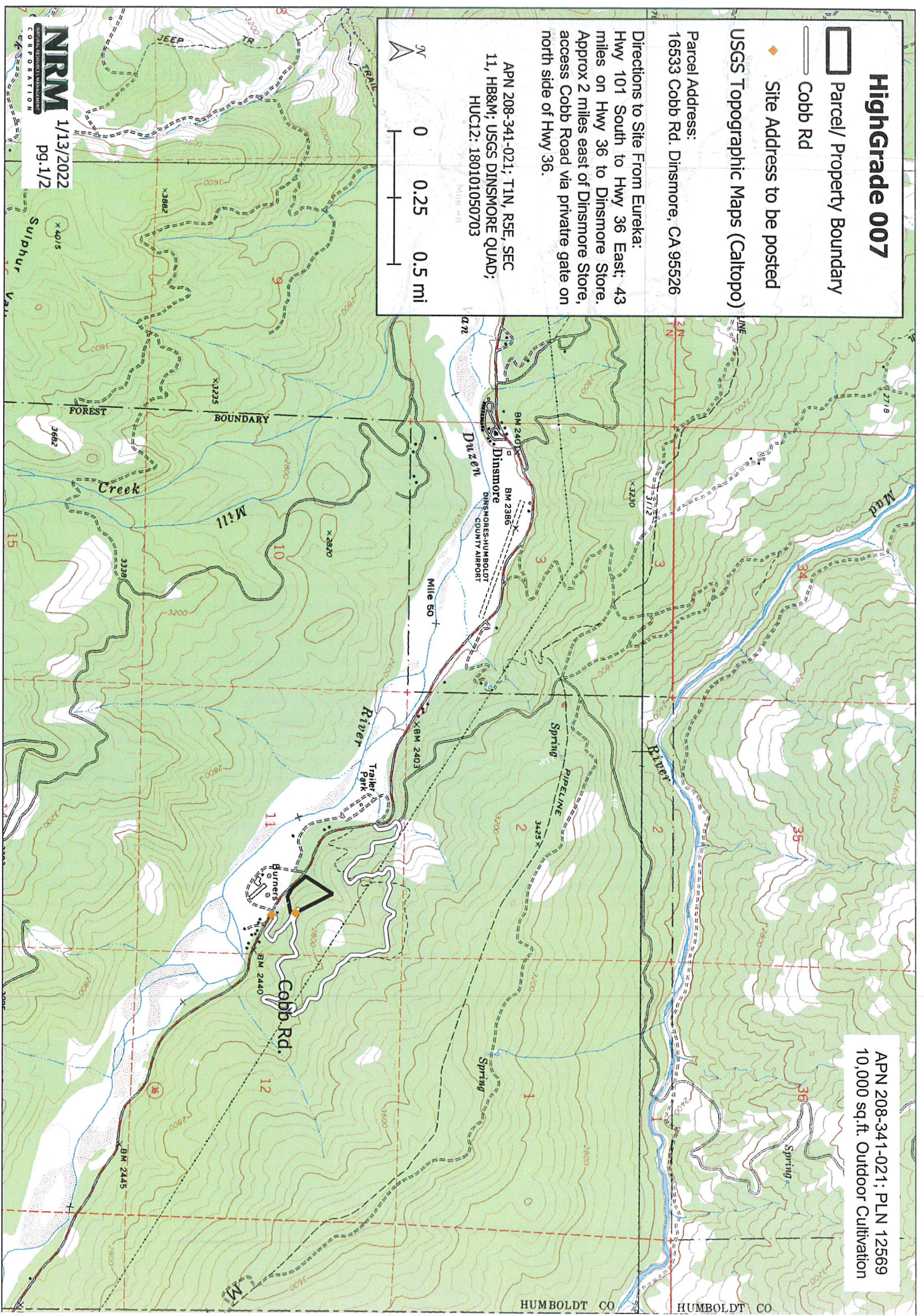
Parcel Address:
16533 Cobb Rd. Dinsmore, CA 95526

Directions to Site From Eureka:
Hwy 101 South to Hwy 36 East; 43 miles on Hwy 36 to Dinsmore Store. Approx 2 miles east of Dinsmore Store, access Cobb Road via private gate on north side of Hwy 36.

APN 208-341-021; TIN, R5E, SEC 11, HB&M; USGS DINSMORE QUAD; HUC12: 180101050703



APN 208-341-021; PLN 12569
10,000 sq.ft. Outdoor Cultivation



NRM 1/13/2022
PG. 1/2

HighGrade 007

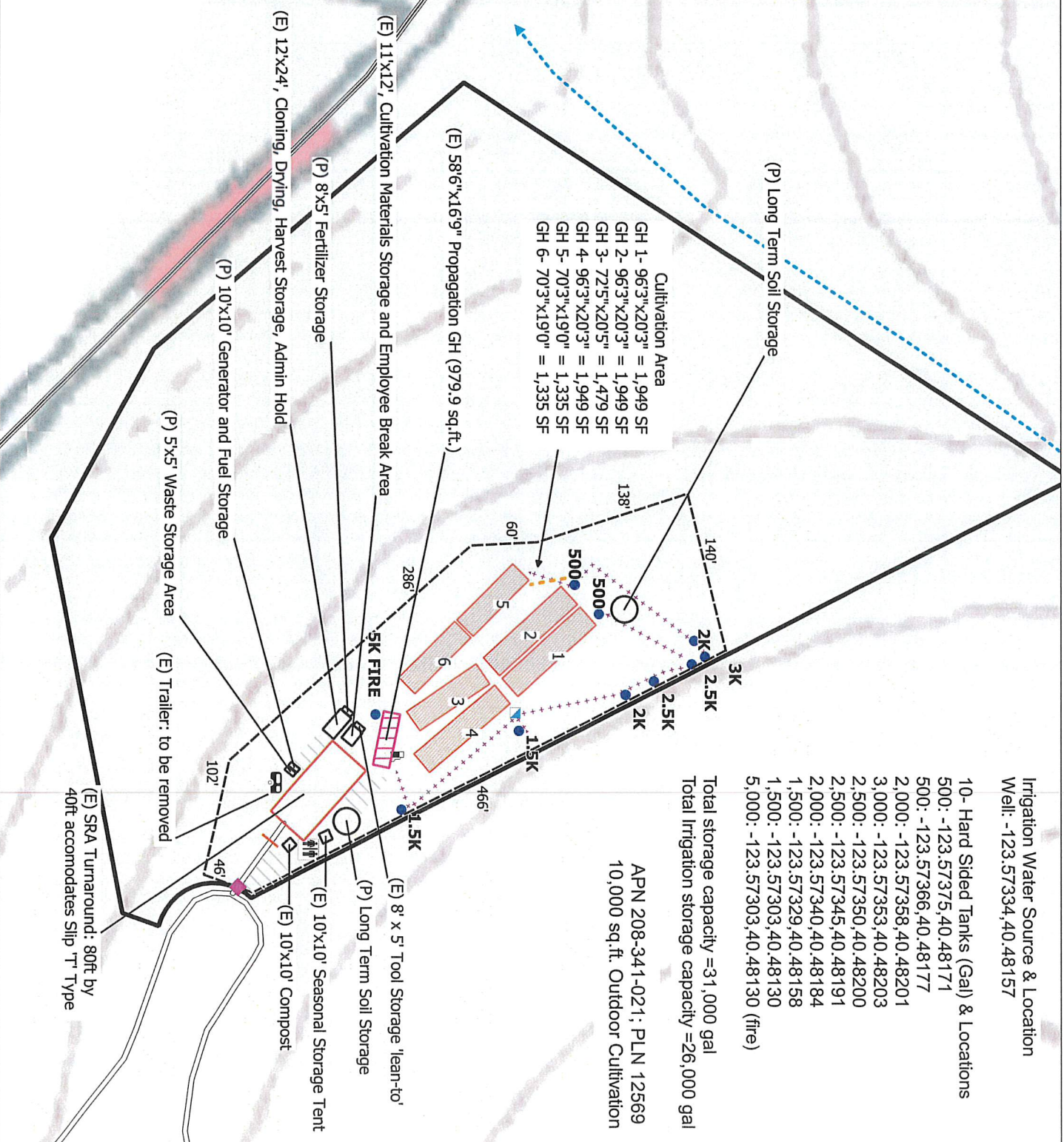
Legend:

- Parcel/ Property Boundary
- Premises Boundary
- Class III
- Water lines
- Gravel road (Cobb Rd)
- Paved Road (Hwy 36)
- Gate
- Foot Path
- Greenhouse
- Propagation GH
- Storage
- Trailer
- Water Storage Tank (gal)
- (P) Portable Restroom
- Generator
- (E) Well
- Premises/Property Entrance & Exit
- SRA Turnaround
- (E) Parking

USGS Topographic Maps (Caltopo)

APN 208-341-021; TIN, R5E, SEC 11, HB&M; USGS DINSMORE QUAD; HUC12: 180101050703

Scale: 0, 100, 200 ft



Irrigation Water Source & Location
Well: -123.57334, 40.48157

- 10- Hard Sided Tanks (Gal) & Locations
- 500: -123.57375, 40.48171
 - 500: -123.57366, 40.48177
 - 2,000: -123.57358, 40.48201
 - 3,000: -123.57353, 40.48203
 - 2,500: -123.57350, 40.48200
 - 2,500: -123.57345, 40.48191
 - 2,000: -123.57340, 40.48184
 - 1,500: -123.57329, 40.48158
 - 1,500: -123.57303, 40.48130
 - 5,000: -123.57303, 40.48130 (fire)

Total storage capacity = 31,000 gal
Total Irrigation storage capacity = 26,000 gal

APN 208-341-021; PLN 12569
10,000 sq. ft. Outdoor Cultivation