

REDWOOD PARK

ARCATA, CA

Prepared for: City of Arcata





NORTH



Scale: 1/16" = 1'-0"

Redwood Park

Arcata, CA

LINEAR FEET:	AS SHOWN	SITE AREA:	As Shown
CRITICAL FALL HEIGHT:	10'-0" CFH	SCALE:	1/16"=1'-0"
22_1108_Redwod Park_002		DATE:	3/27/2023
		DRAWN BY:	CG



ALL DRAWINGS ARE SUBJECT TO CHANGE AND SHOULD BE REVIEWED BEFORE FINAL SALE. ALL SITE DIMENSIONS WILL NEED TO BE VERIFIED PRIOR TO SALE AND INSTALLATION.



2-5 Play Yard

*Colors shown in rendering are for illustrative purposes only. Actual color and pattern may vary slightly.

Colors Used In Rendering:





2-5 Play Yard

*Colors shown in rendering are for illustrative purposes only. Actual color and pattern may vary slightly.



2-5 Play Yard

*Colors shown in rendering are for illustrative purposes only. Actual color and pattern may vary slightly.



2-5 Play Yard

*Colors shown in rendering are for illustrative purposes only. Actual color and pattern may vary slightly.



2-5 Play Yard

*Colors shown in rendering are for illustrative purposes only. Actual color and pattern may vary slightly.



5-12 Play Yard

*Colors shown in rendering are for illustrative purposes only. Actual color and pattern may vary slightly.

Colors Used In Rendering:



Green



Beige



5-12 Play Yard

*Colors shown in rendering are for illustrative purposes only. Actual color and pattern may vary slightly.



5-12 Play Yard

*Colors shown in rendering are for illustrative purposes only. Actual color and pattern may vary slightly.



5-12 Play Yard

*Colors shown in rendering are for illustrative purposes only. Actual color and pattern may vary slightly.



5-12 Play Yard

*Colors shown in rendering are for illustrative purposes only. Actual color and pattern may vary slightly.



5-12 Play Yard

*Colors shown in rendering are for illustrative purposes only. Actual color and pattern may vary slightly.

ADA COMPONENTS COUNTS

PLAY AREA - AGE APPROPRIATE 2-5 YEARS:

CAPACITY: 64-74 CHILDREN

ELEVATED PLAY ACTIVITIES (TOTAL)

10

- Telescope
- Net Bridge
- Rope Ladder
- 270° Typhoon Slide
- Lizzard Log
- Ships Wheel
- Pairs Game
- Car Console
- L Slide
- Ball Post Climber

ELEVATED PLAY ACTIVITIES ACCESSIBLE BY TRANSFER:

10

REQ'D: 5

ELEVATED PLAY ACTIVITIES ACCESSIBLE BY RAMP:

0

REQ'D: 0

GROUND LEVEL ACTIVITY TYPE:

8

REQ'D: 3

- Manipulative
- Imaginative
- Balancing
- Swinging
- Music
- Spinning
- Climbing
- Sliding

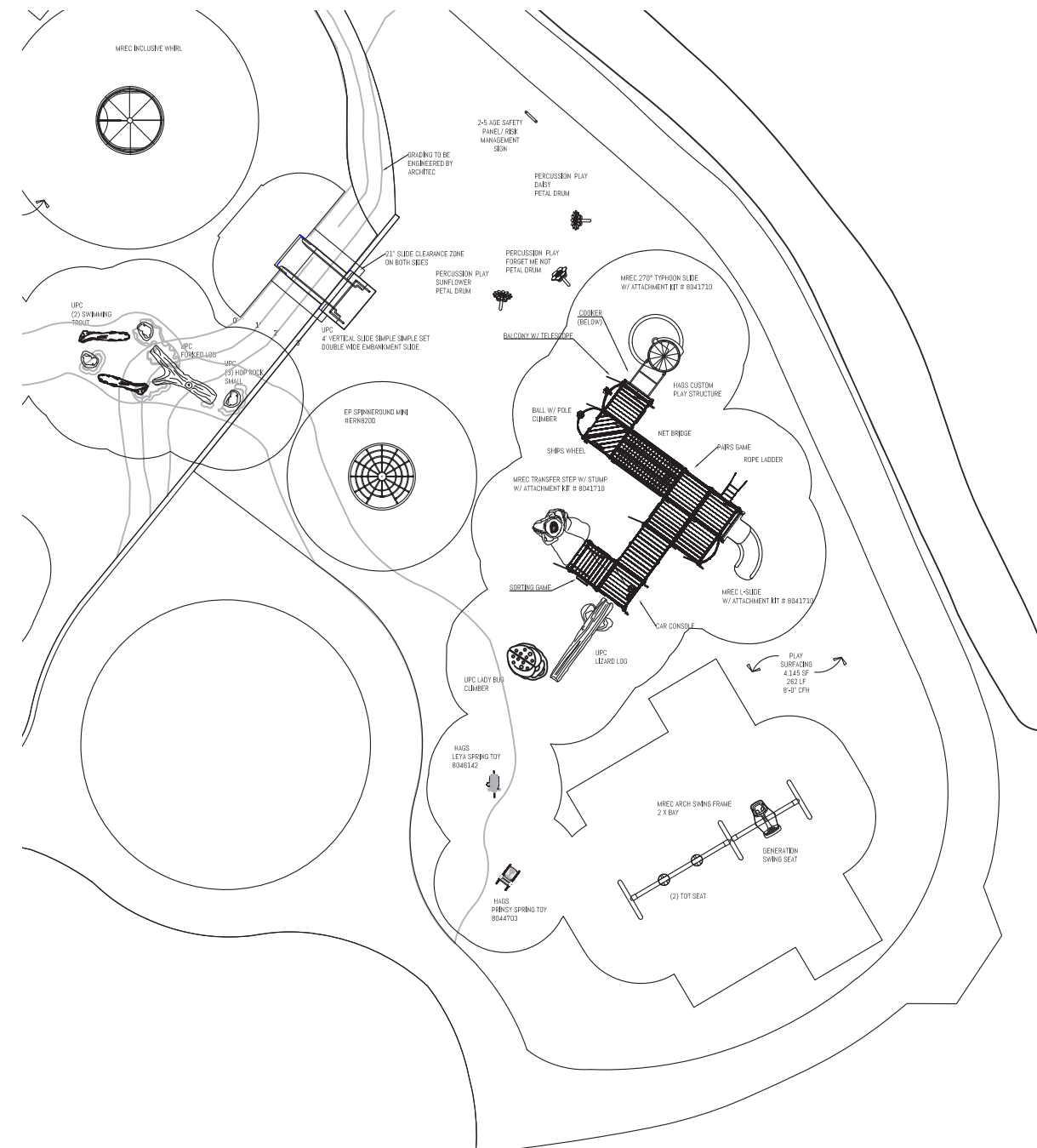
GROUND LEVEL ACTIVITY QUANTITY:

19

REQ'D 3

- Sorting Game
- Leya Spring Toy
- 360° Tot Swing (2)
- Forget-Me-Not Petal Drum
- Spinneround Mini
- Small Hop Rock (3)
- Forked Log
- Swimming Trout (2)
- Prinsy Spring Toy
- Generation Swing
- Sunflower Petal Drum
- Daisy Petal Drum
- Ladybug
- Cooker
- 4' Tall Embankment Slide

Compliance Review



ADA NOTES:

1. TRANSFER STEPS TO BE STRIPED PER 11B-5044.12.
2. USE ZONES FINISH SURFACE OF PLAYGROUND COMPLIES WITH ASTM F1292-99.3.
3. GROUND SURFACING COMPLIES WITH ASTM 1951-99.4.
4. PLAYGROUND EQUIPMENT SHALL COMPLY WITH ASTM F1487-98.5.
5. THIS PLAY AREA MEETS CBC SECTION 11B-1008.



1 Multi-Sensory Play Elements

- Vestibular (movement and balance)
- Proprioceptive (body position)
- Tactile (touch)
- Auditory (hearing)
- Visual
- Olfactory

2 All Children Encouraged to Play

- Providing a graduated range of challenge
- Grouping similar equipment together
- Offering equipment for multiple age groups
- Providing real choices of play for each child

3 Accessibility

- Protective, shock-absorbing unitary surfacing
- Wide movement routes
- Smooth, even transitions on and off equipment

4 Opportunity for Calm

- Offering cozy, quiet spaces
- Establishing perimeter paths and fences
- Providing a wayfinding system that includes an orientation path

5 Social Environments

- S** Solitary play - Children play alone
- O** Onlooker play - Children watch others play but do not engage in play
- P** Parallel play - Children play next to each other but are engaged in their own activities
- A** Associative play - Children are still playing independently but often do the same thing as others
- C** Cooperative play - Children interact together for the purpose of play

Elements of Play



ADA COMPONENTS COUNTS

PLAY AREA - AGE APPROPRIATE 5-12 YEARS: CAPACITY: 85-98 CHILDREN

ELEVATED PLAY ACTIVITIES (TOTAL)	19		
- Net Tunnel			
- Rope Ladder (2)			
- Spiderwalk Clmber			
- Triple Rail			
- Four In A Row			
- Climbing Wall (4)			
- 30" Funnel Tunnel Slide			
- Needle Point Rock			
- Periscope			
- Picture Puzzle			
- Ships Wheel			
- Telescope			
- Single Rail			
- Groove II Slide			
- Snaky			
ELEVATED PLAY ACTIVITIES ACCESSIBLE BY TRANSFER:	19	REQ'D: 10	
ELEVATED PLAY ACTIVITIES ACCESSIBLE BY RAMP:	0	REQ'D: 0	
GROUND LEVEL ACTIVITY TYPE:	4	REQ'D: 3	
- Climbing			
- Balancing			
- Spinning			
- Swinging			
GROUND LEVEL ACTIVITY QUANTITY:	15	REQ'D 6	
- Triangular Net			
- Amble Ladder (2)			
- Rope Ladder			
- Inclusive Whirl			
- Small Hop Rock (4)			
- Sequoia Net 2-With Ropes			
- Slashproof Belt Seat (2)			
- Therapeutic Swing			
- Accelerator Birds Nest Swing			
- Angle Log			

Compliance Review



- ADA NOTES:
1. TRANSFER STEPS TO BE STRIPED PER 11B-5044.12.
 2. USE ZONES FINISH SURFACE OF PLAYGROUND COMPLIES WITH ASTM F1292-99.3.
 3. GROUND SURFACING COMPLIES WITH ASTM 1951-994.
 4. PLAYGROUND EQUIPMENT SHALL COMPLY WITH ASTM F1487-98.5.
 5. THIS PLAY AREA MEETS CBC SECTION 11B-1008.



Presented by your Miracle Team

Shana Friesen
Client Services Manager
Miracle Playsystems Inc
shana@miracleplaygroup.com
(510) 514-5212



Stephanie Rodriguez
Inside Account Manager
Miracle Playsystems Inc
stepanie@miracleplaygroup.com
(510) 306-8756



Claudia Gutierrez
Designer
Miracle Playsystems Inc
claudia@miracleplaygroup.com
(510) 775-4476



Thank you for your consideration!

