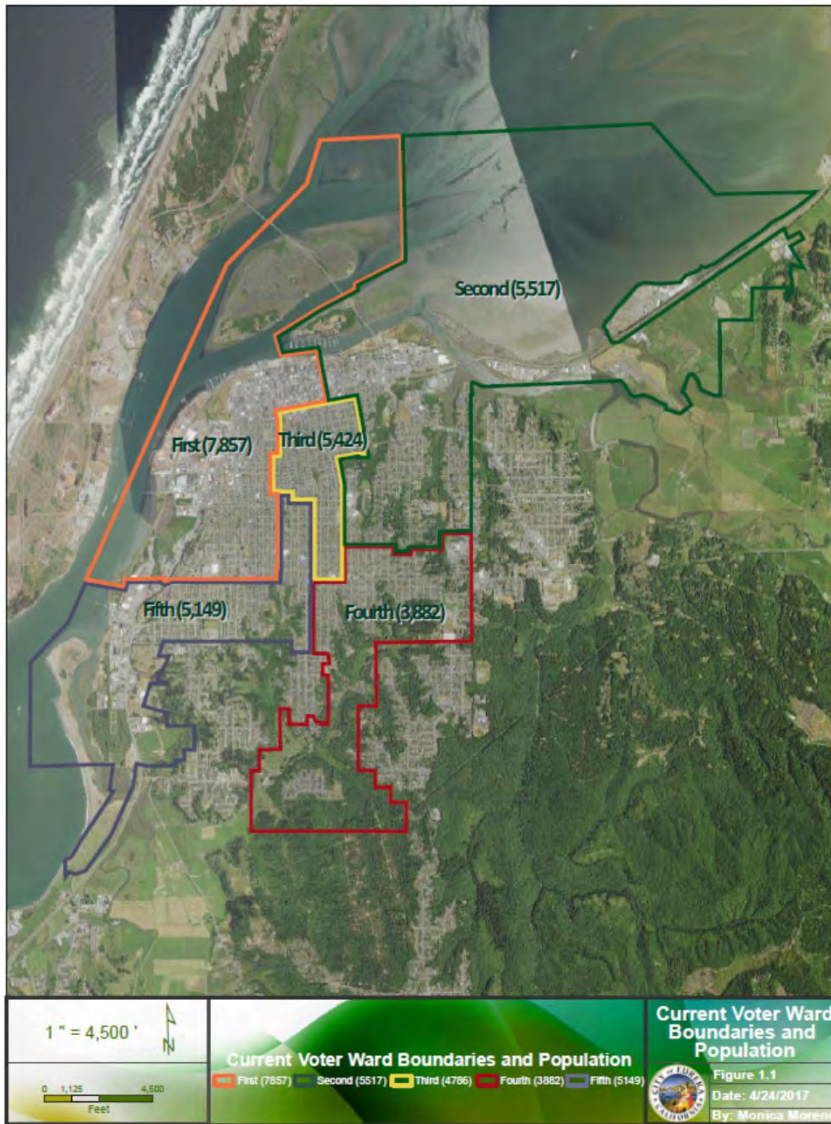
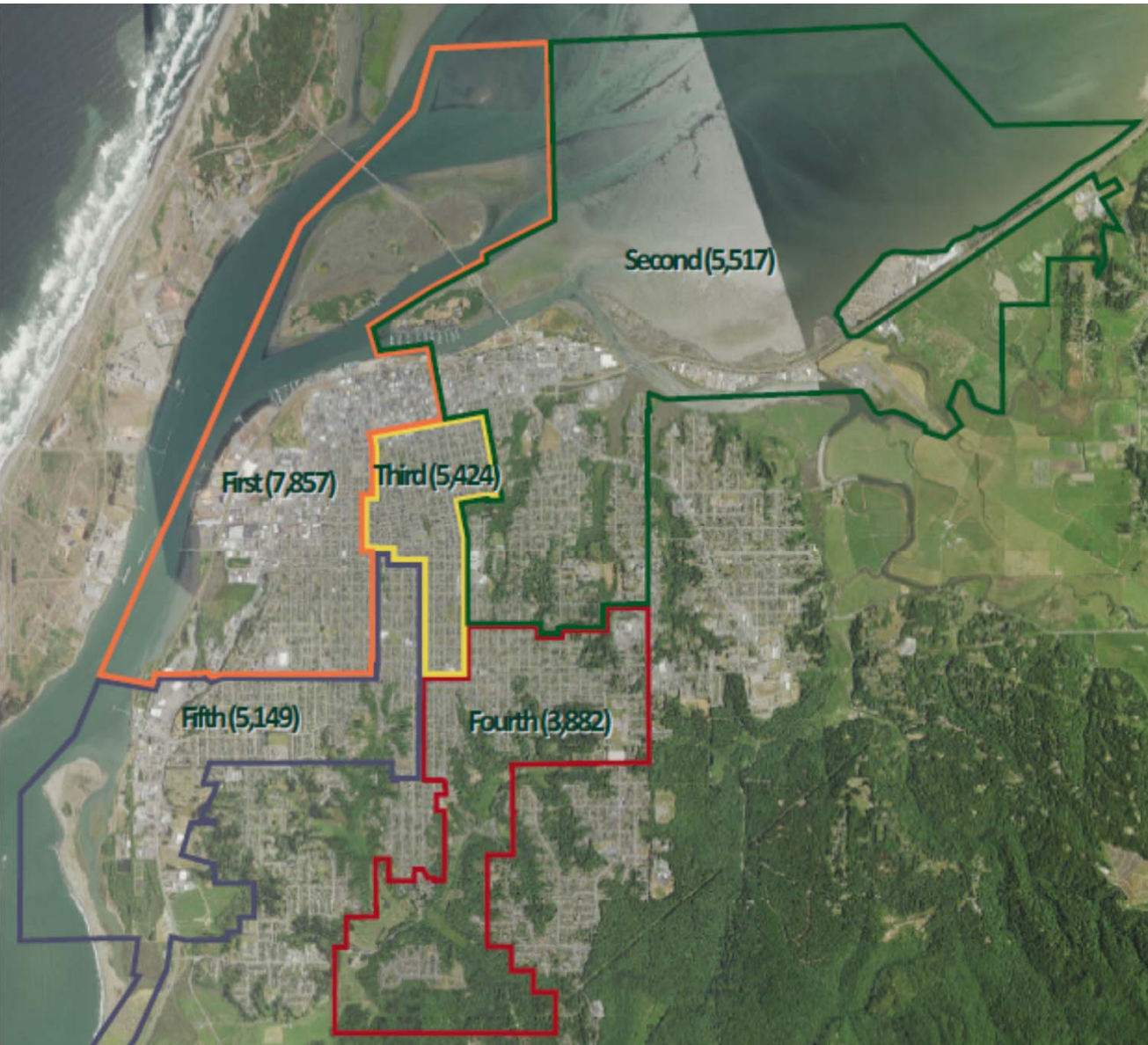


Ward Discussion



EXISTING

Population

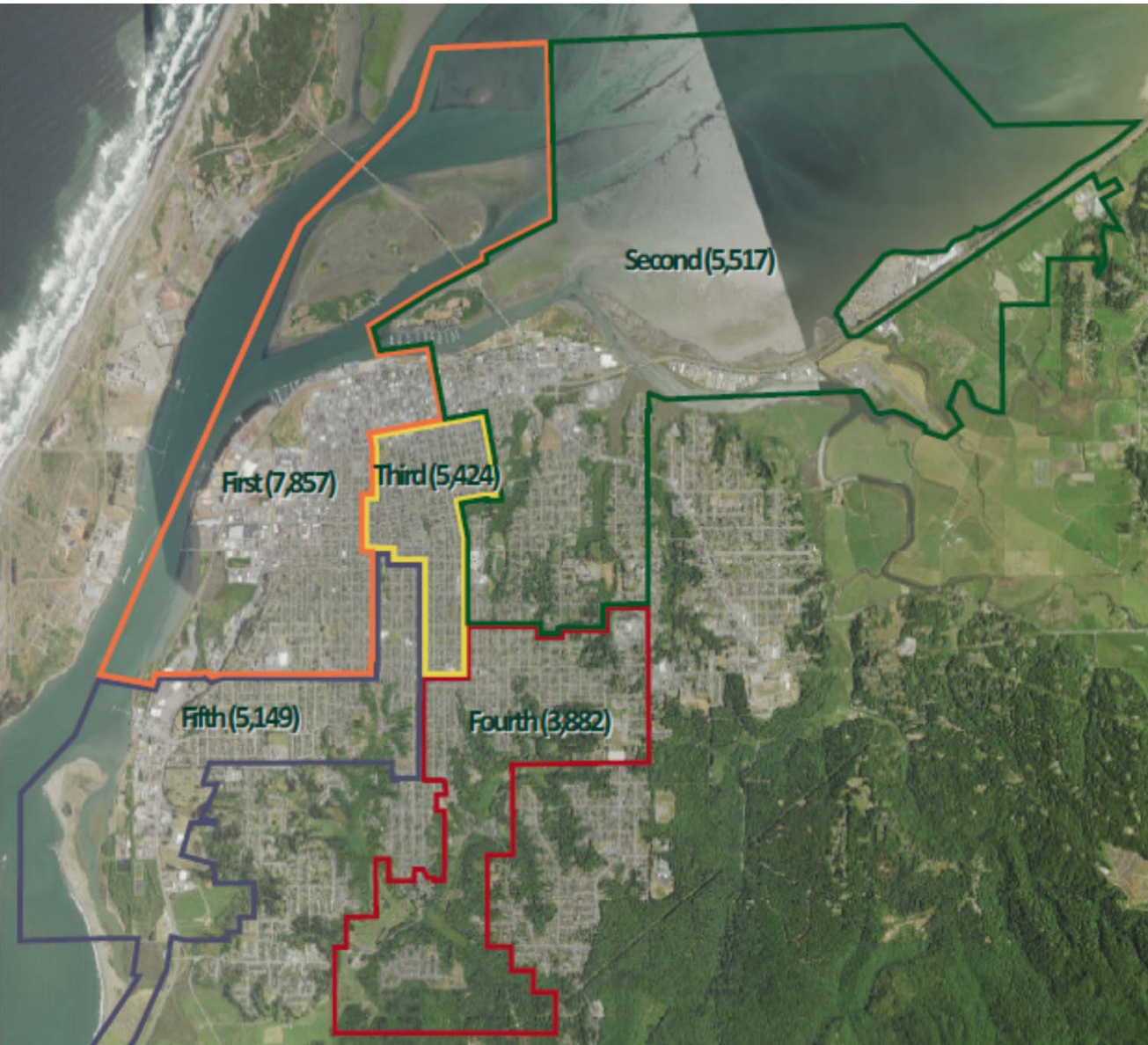


- First – 7,857
- Second – 5,517
- Third – 5,424
- Fourth – 3,882
- Fifth – 5,149

- Avg – 5,438

EXISTING

Population

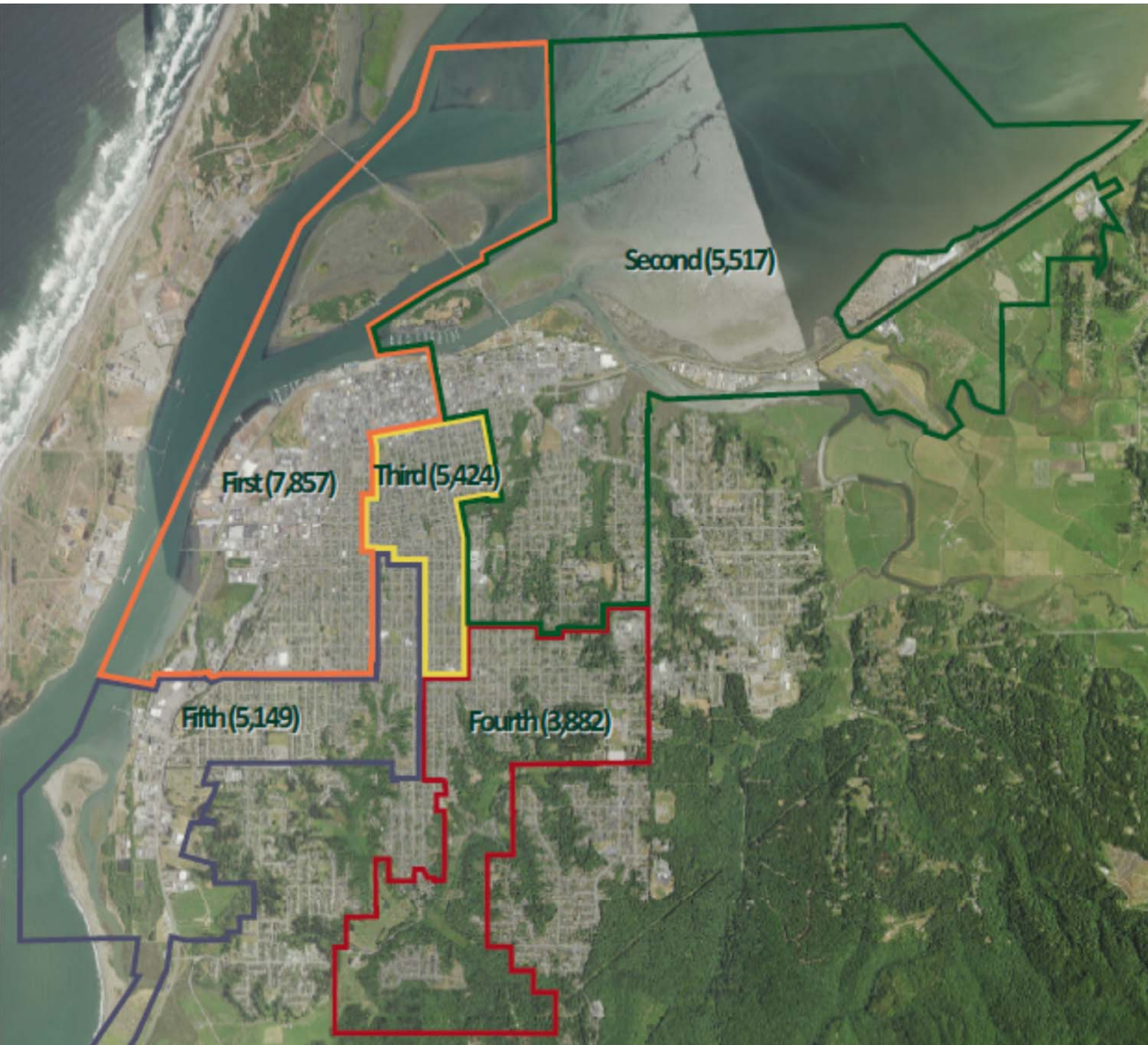


- **First – 7,857 (over)**
- **Second – 5,517 (over)**
- Third – 5,424
- Fourth – 3,882
- Fifth – 5,149

- Avg – 5,438

EXISTING

Population

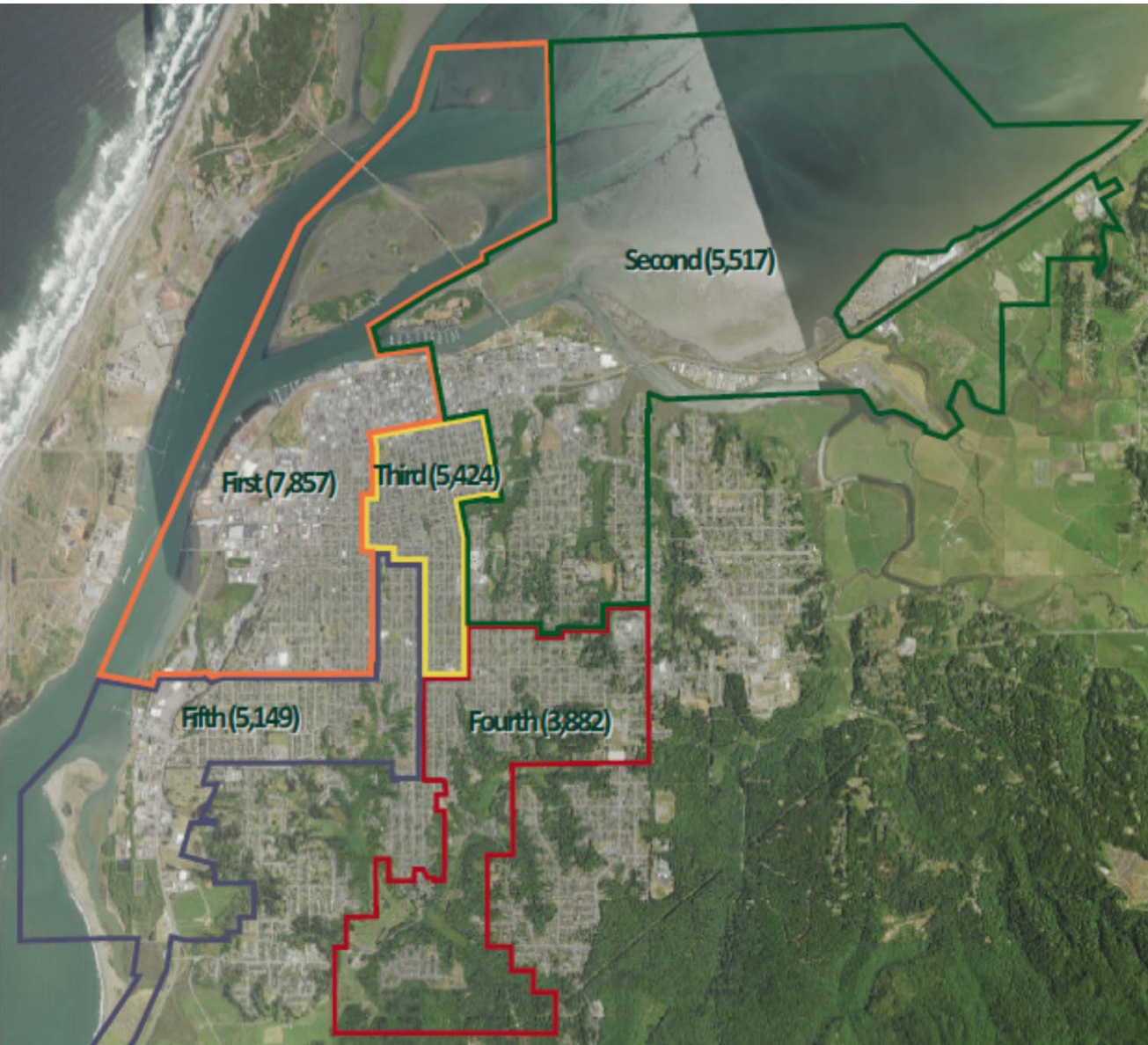


- **First – 7,857 (over)**
- **Second – 5,517 (over)**
- **Third – 5,424 (okay)**
- Fourth – 3,882
- Fifth – 5,149

- Avg – 5,438

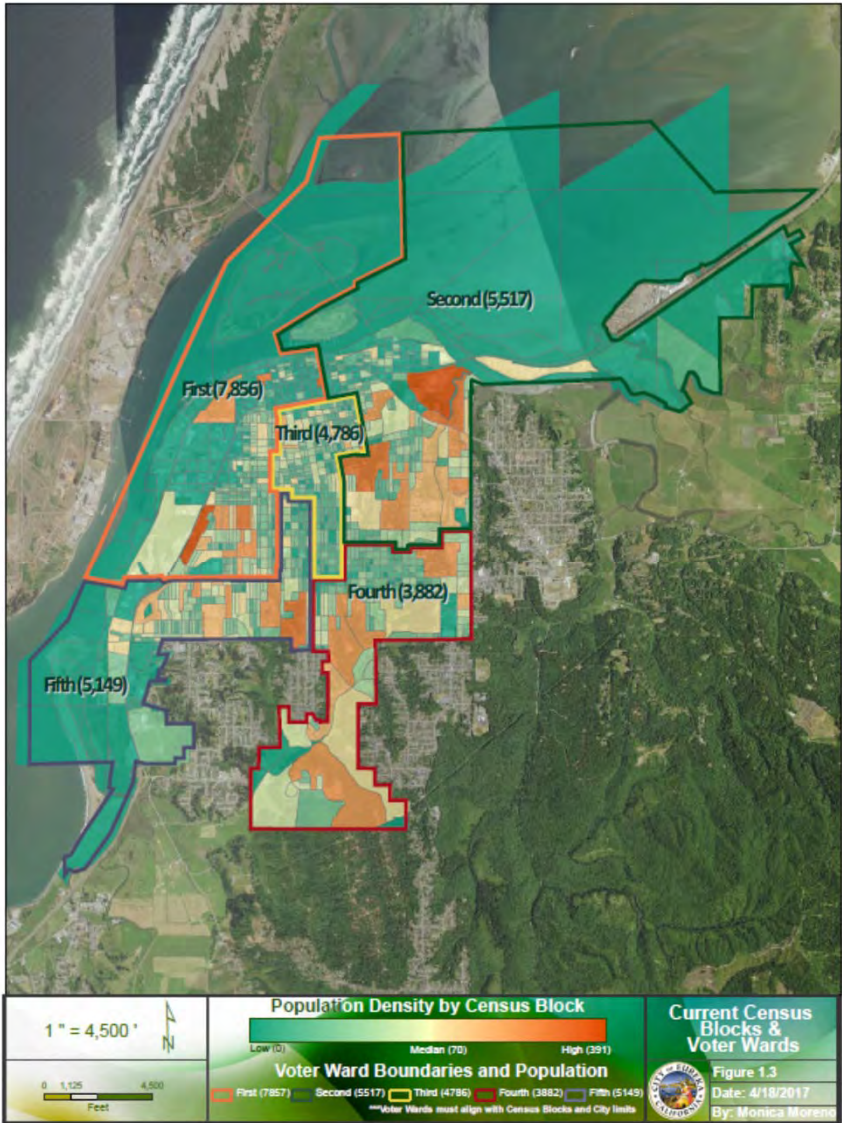
EXISTING

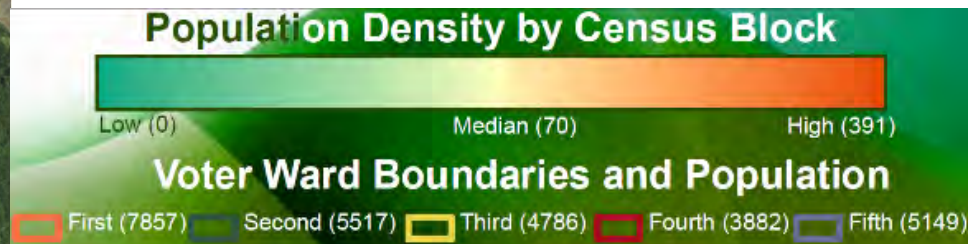
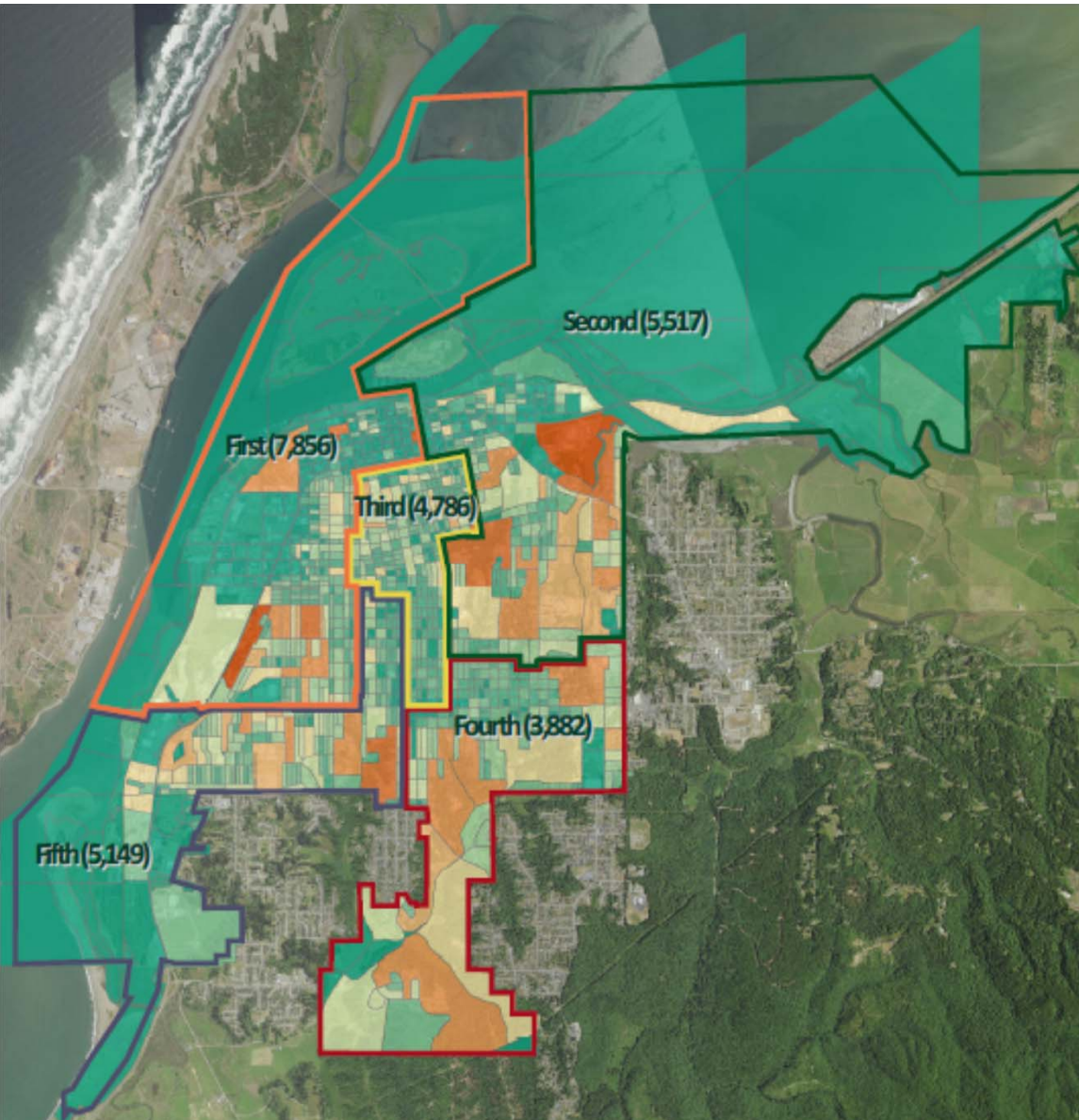
Population

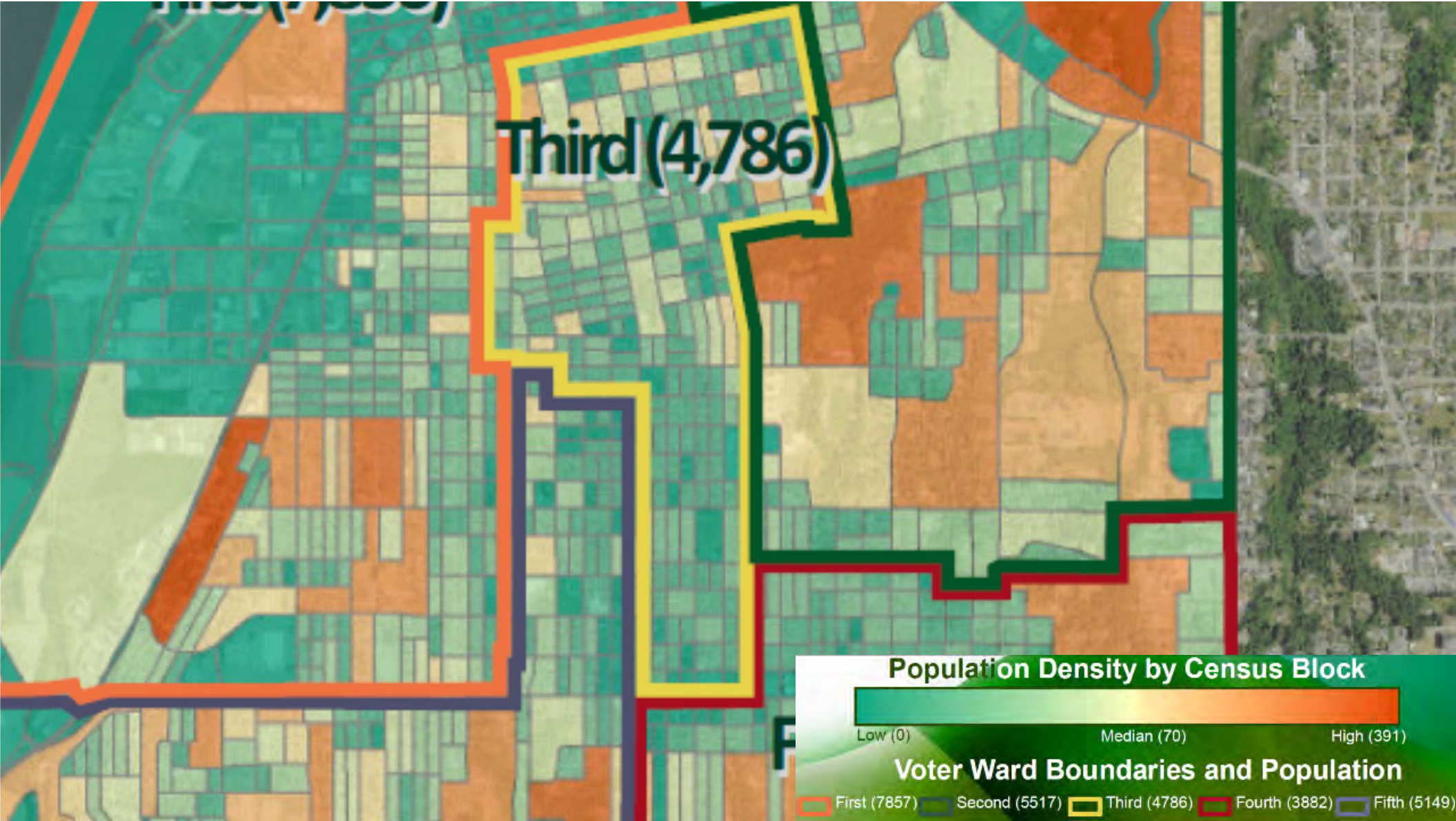


- **First – 7,857 (over)**
- **Second – 5,517 (over)**
- **Third – 5,424 (okay)**
- **Fourth – 3,882 (under)**
- **Fifth – 5,149 (under)**

- Avg – 5,438





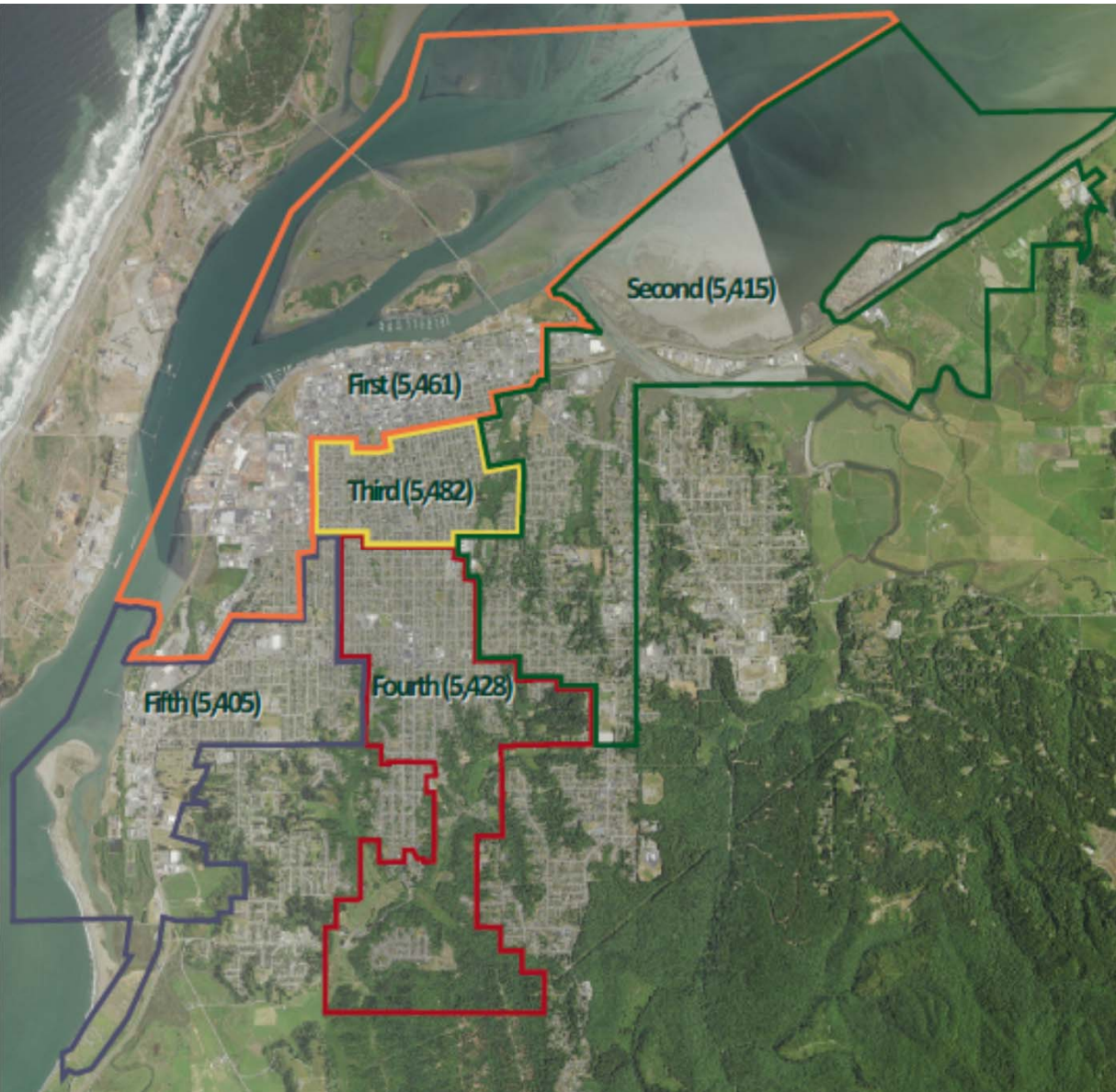


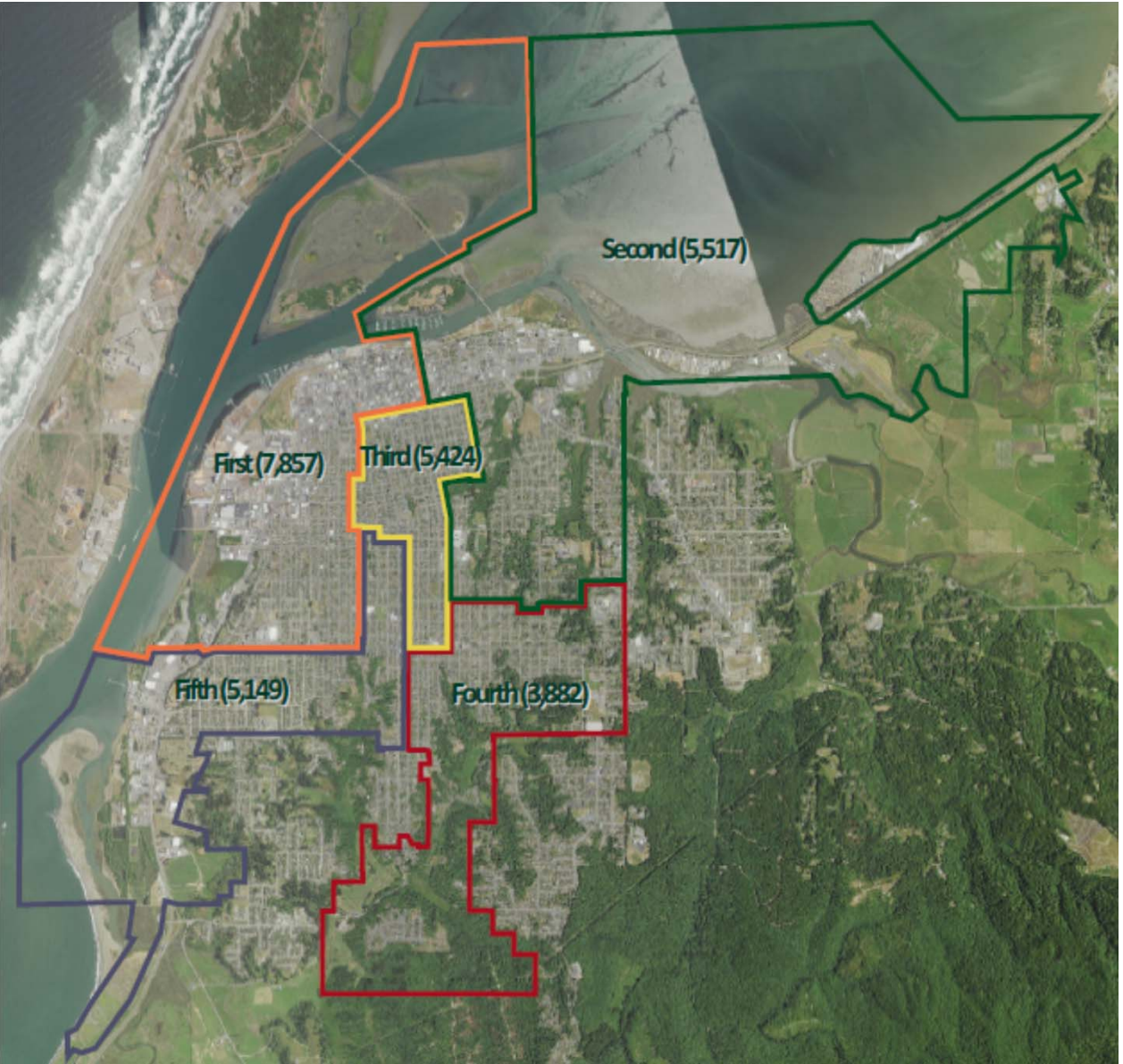
SCENARIO 1

Population

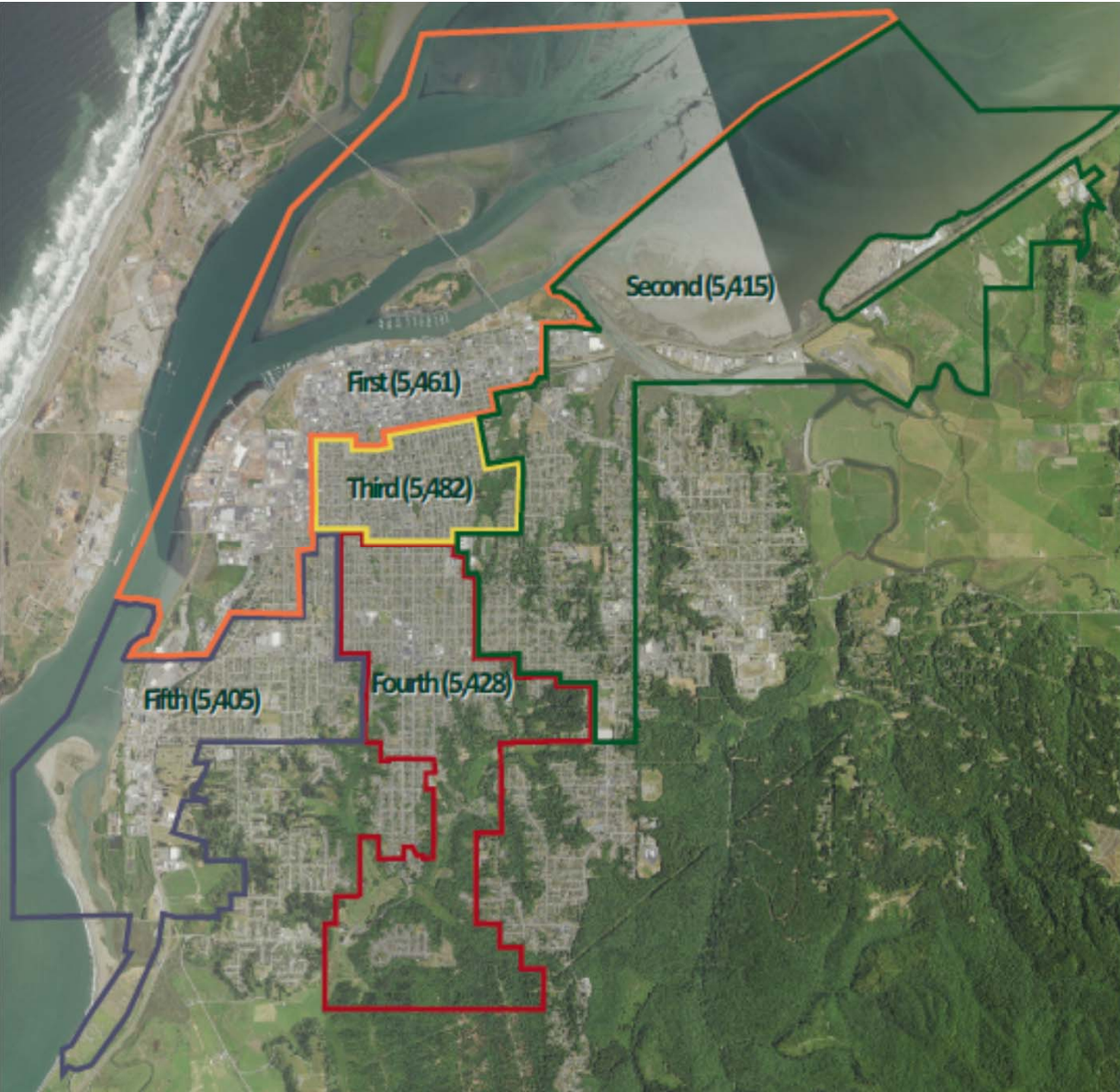
- First – 5,461
- Second – 5,5,415
- Third – 5,482
- Fourth – 5,428
- Fifth – 5,405

- Avg – 5,438





EXISTING



SCENARIO 1

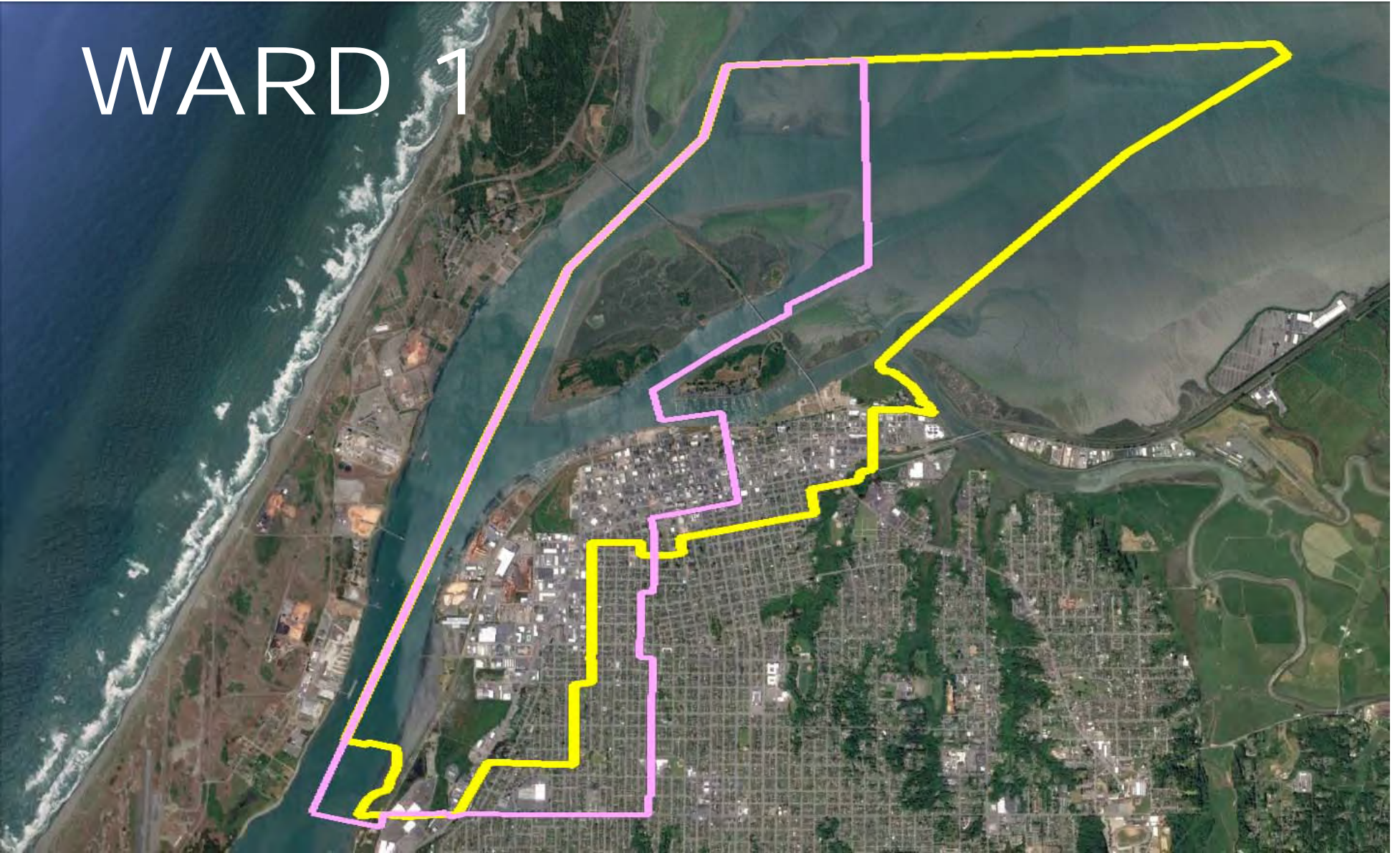
WARD 1 (e)



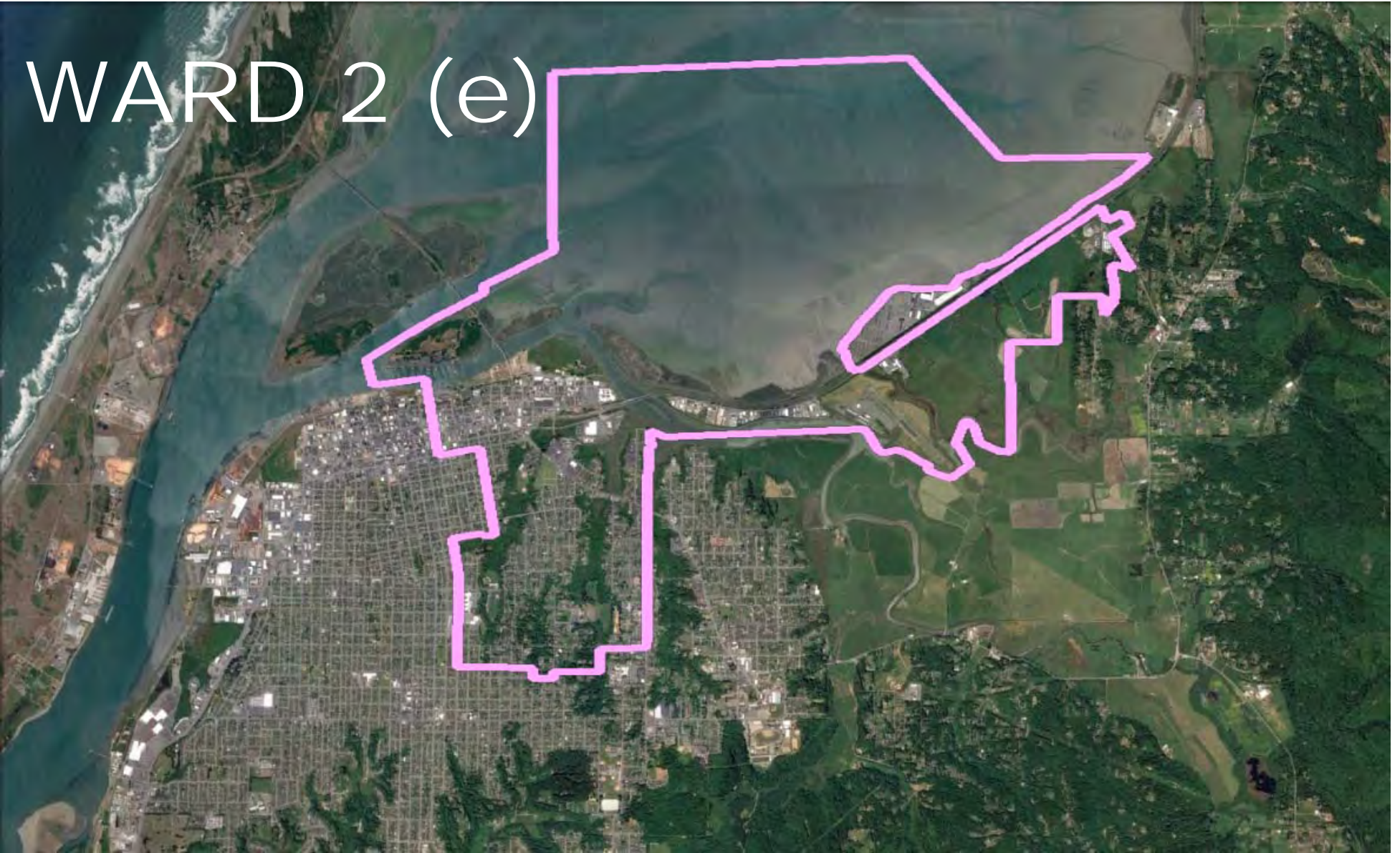
WARD 1 (s1)



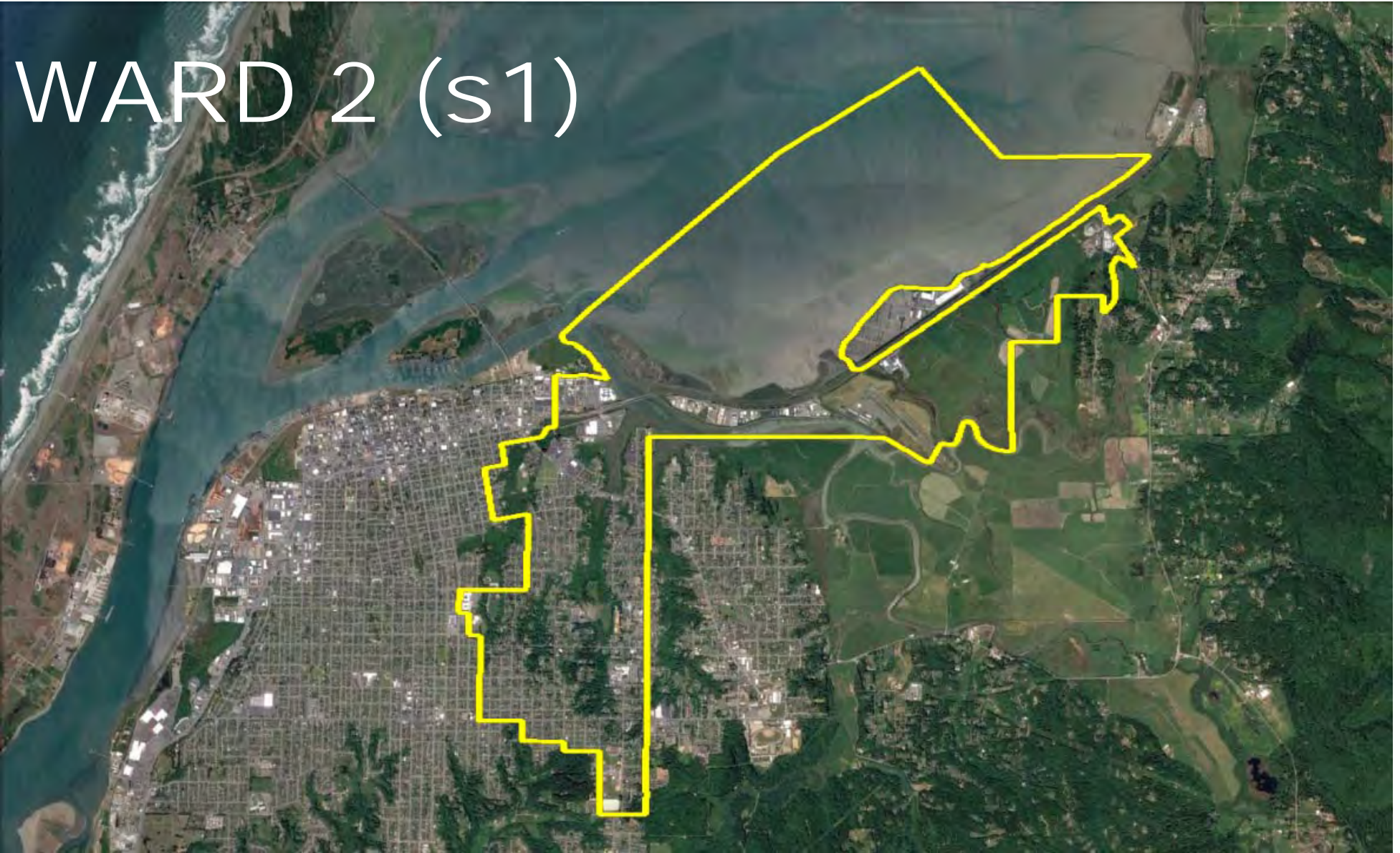
WARD 1



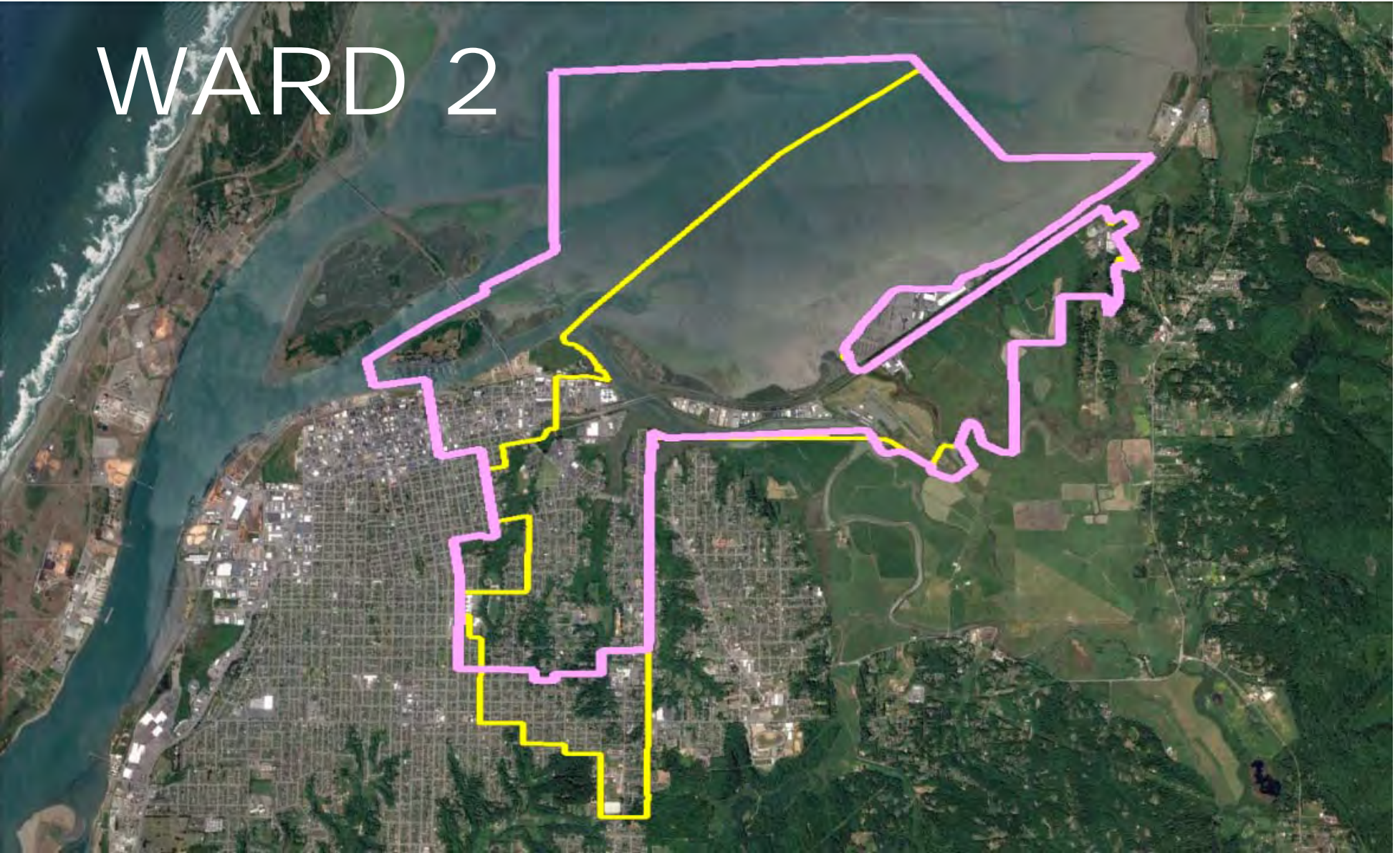
WARD 2 (e)



WARD 2 (s1)



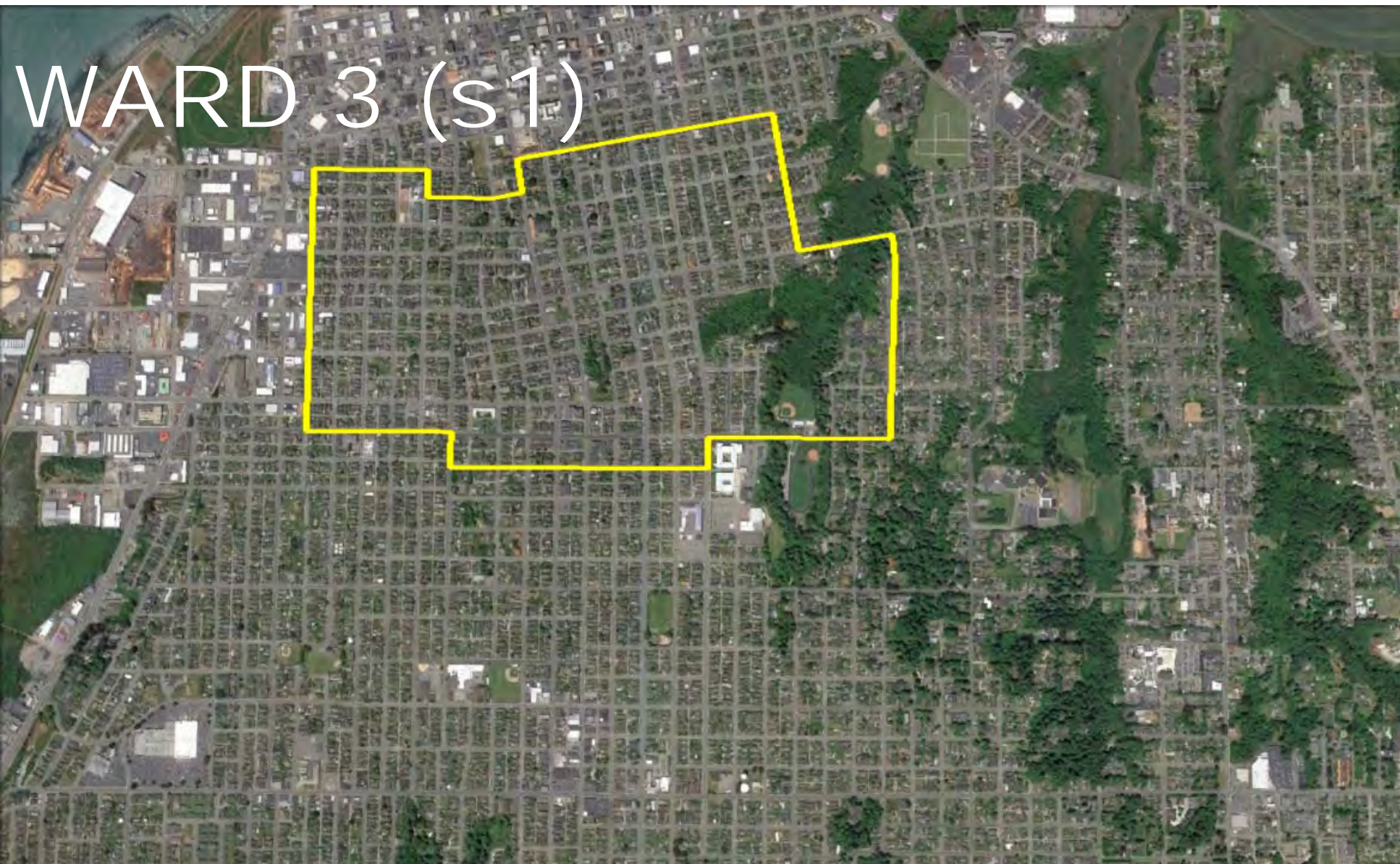
WARD 2



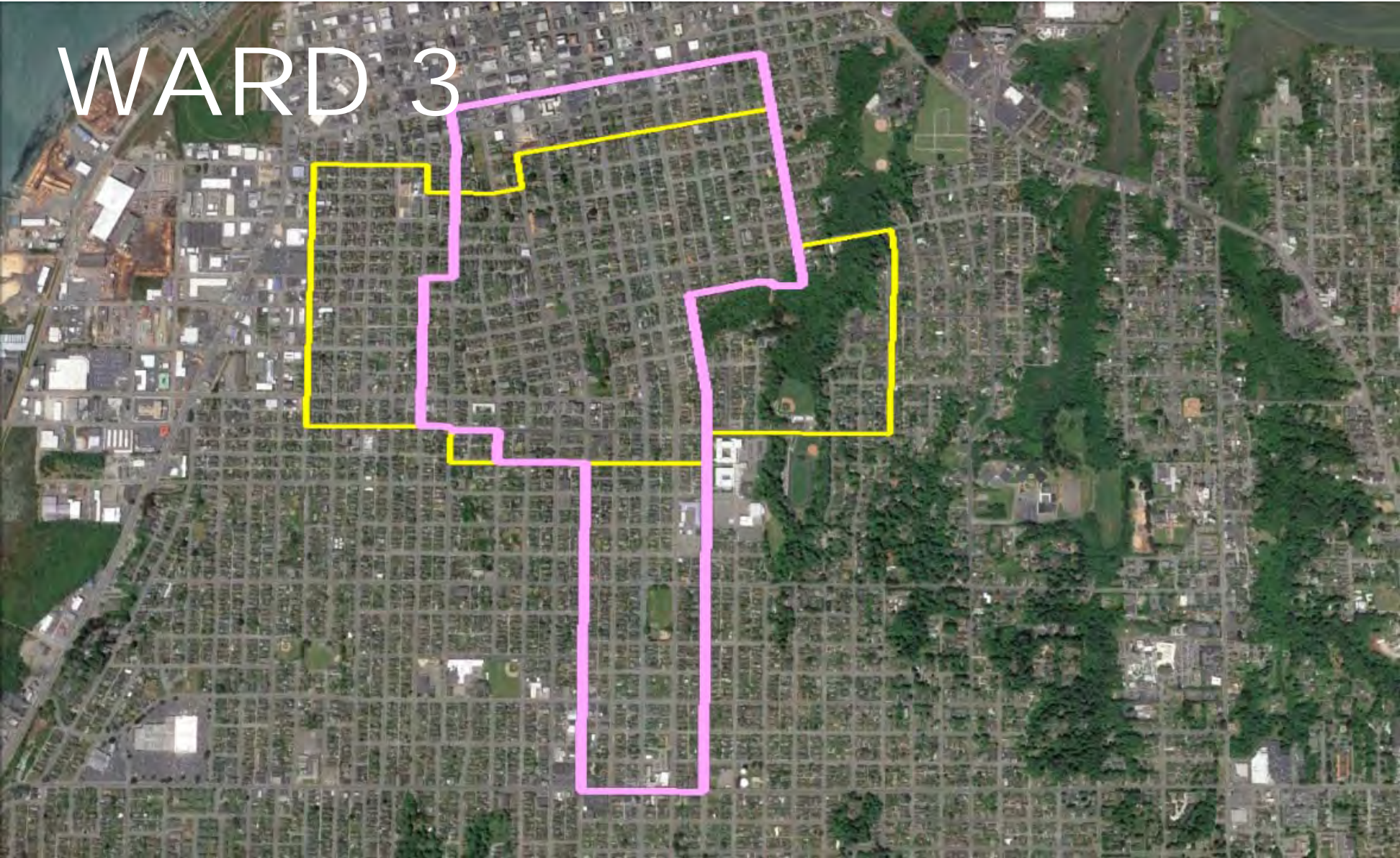
WARD 3 (e)



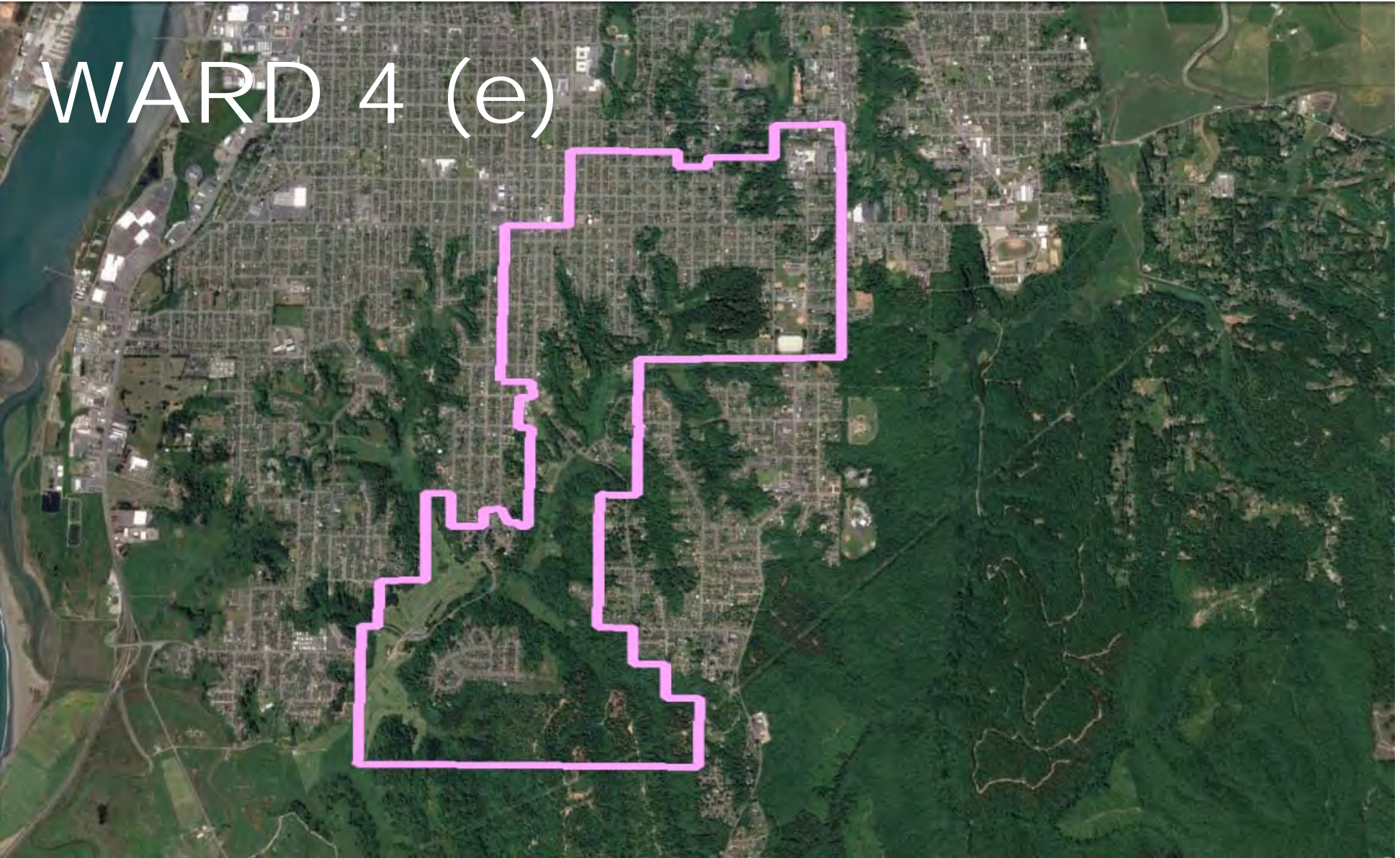
WARD 3 (s1)



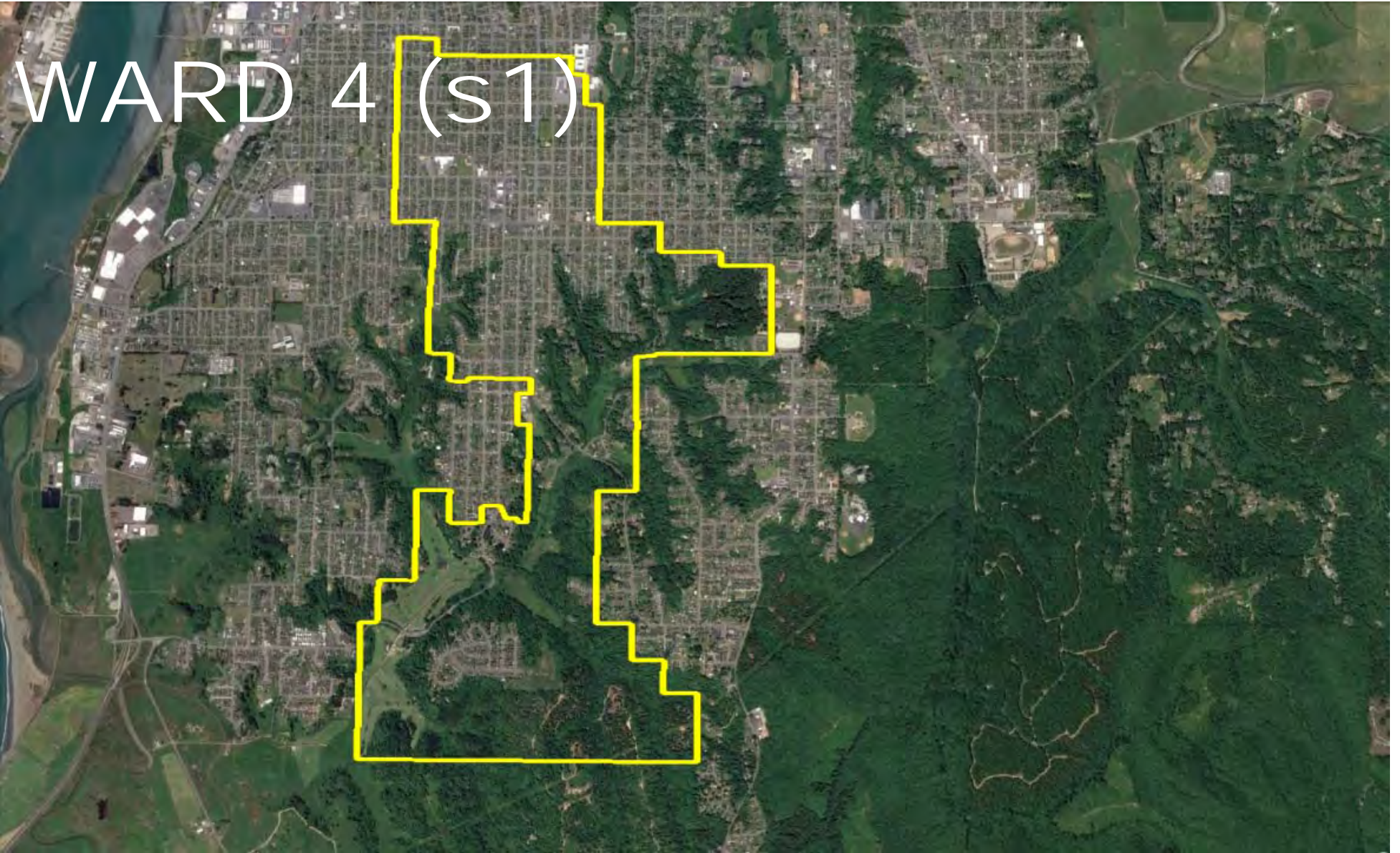
WARD 3



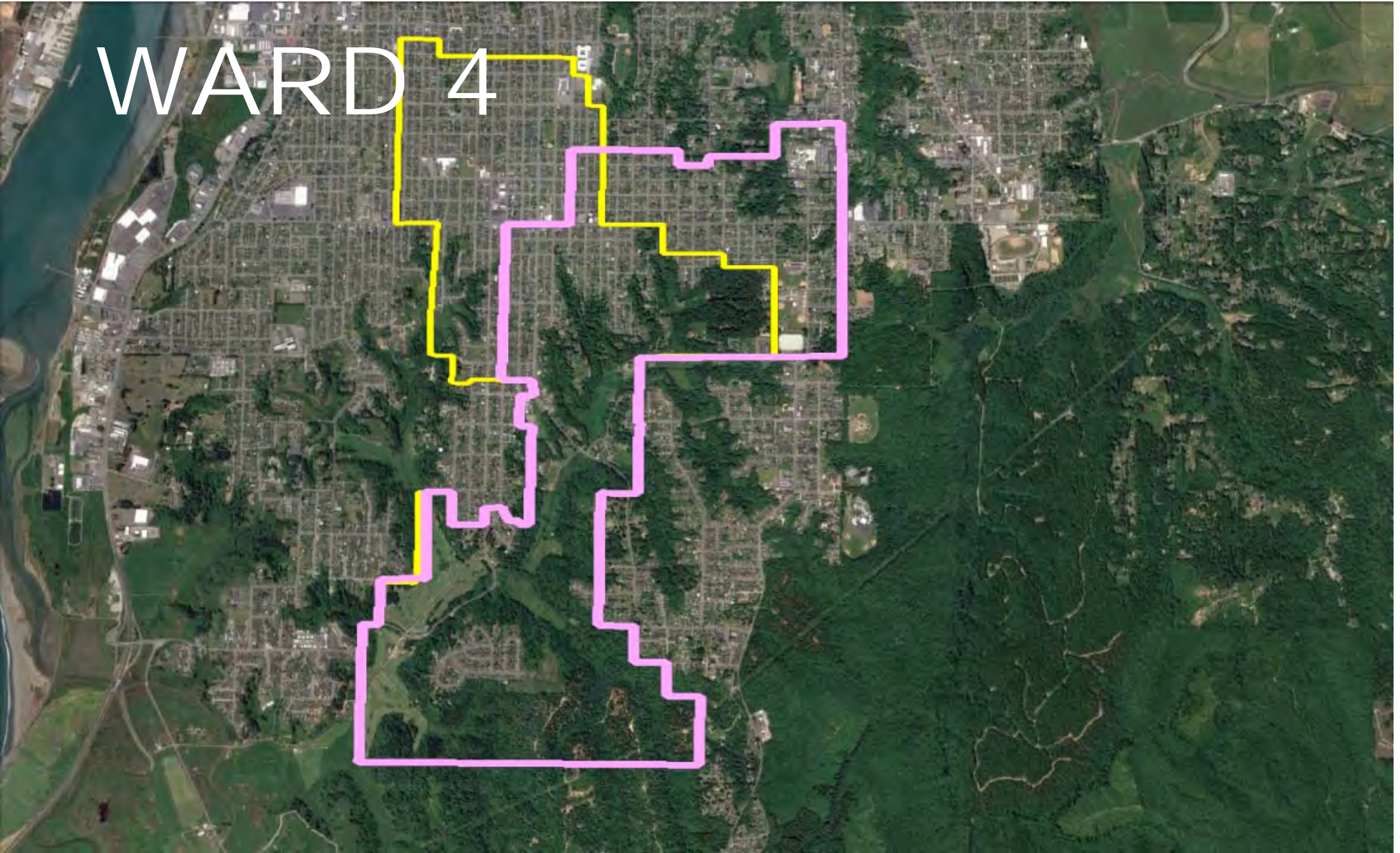
WARD 4 (e)



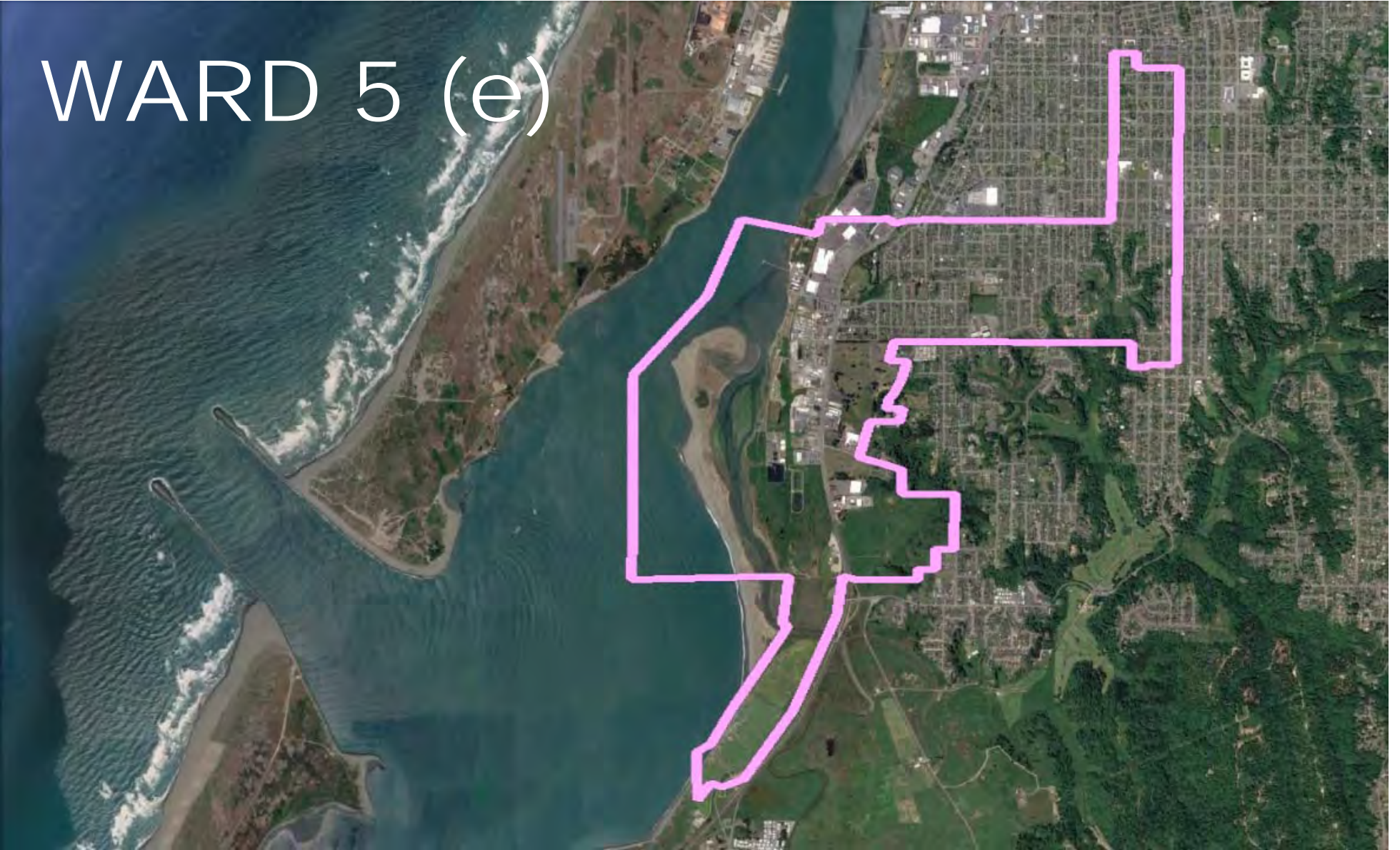
WARD 4 (S1)



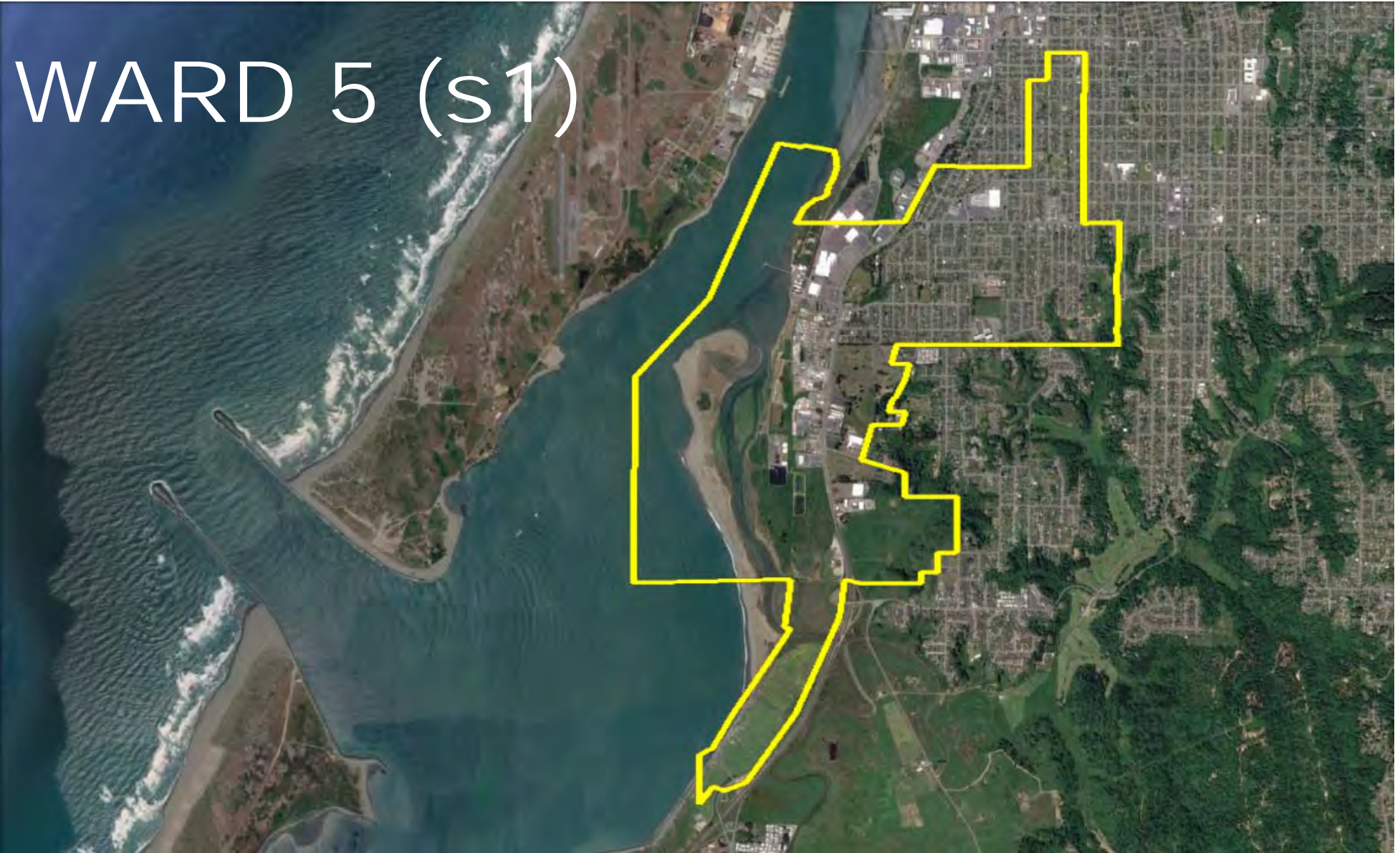
WARD 4



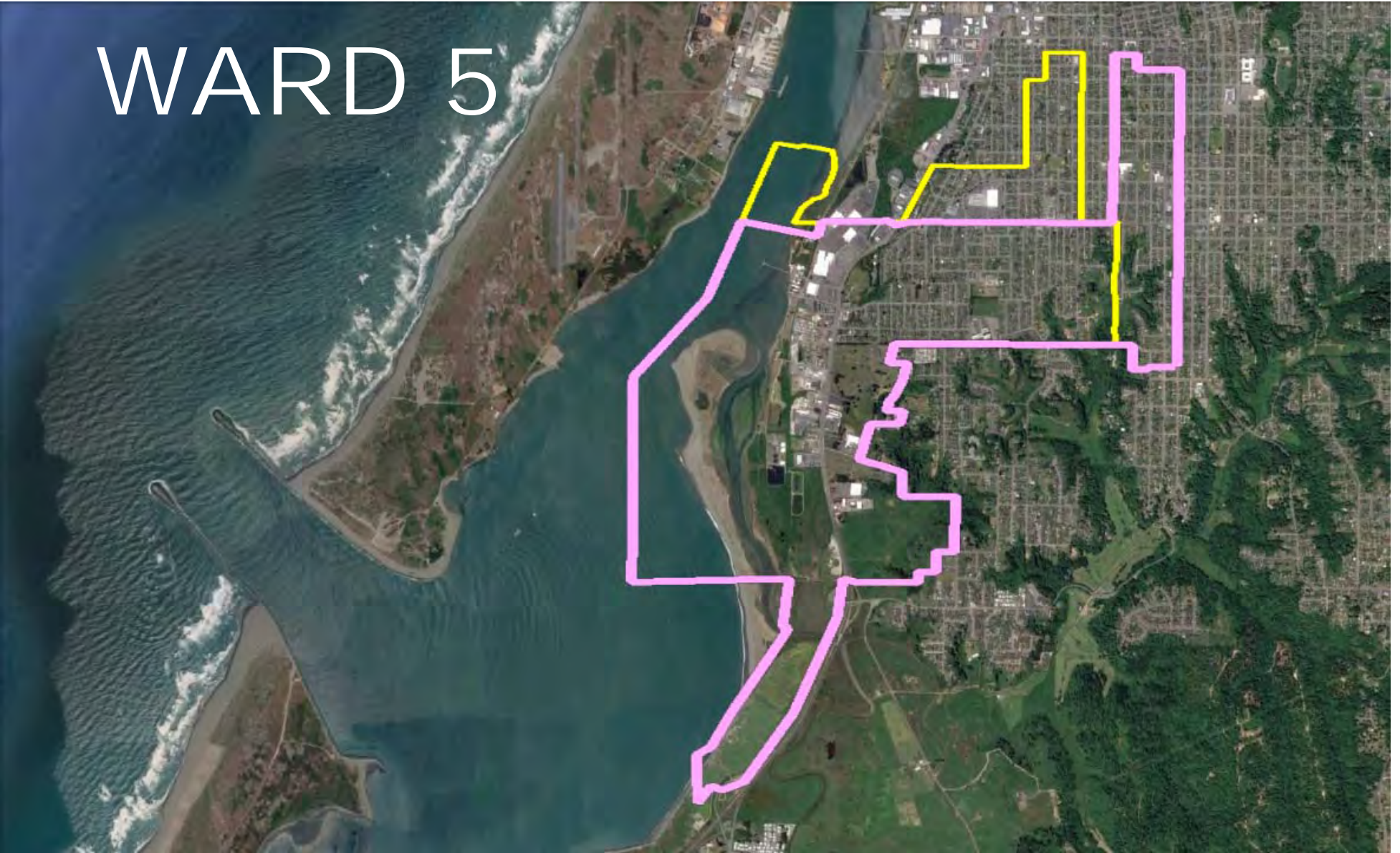
WARD 5 (e)

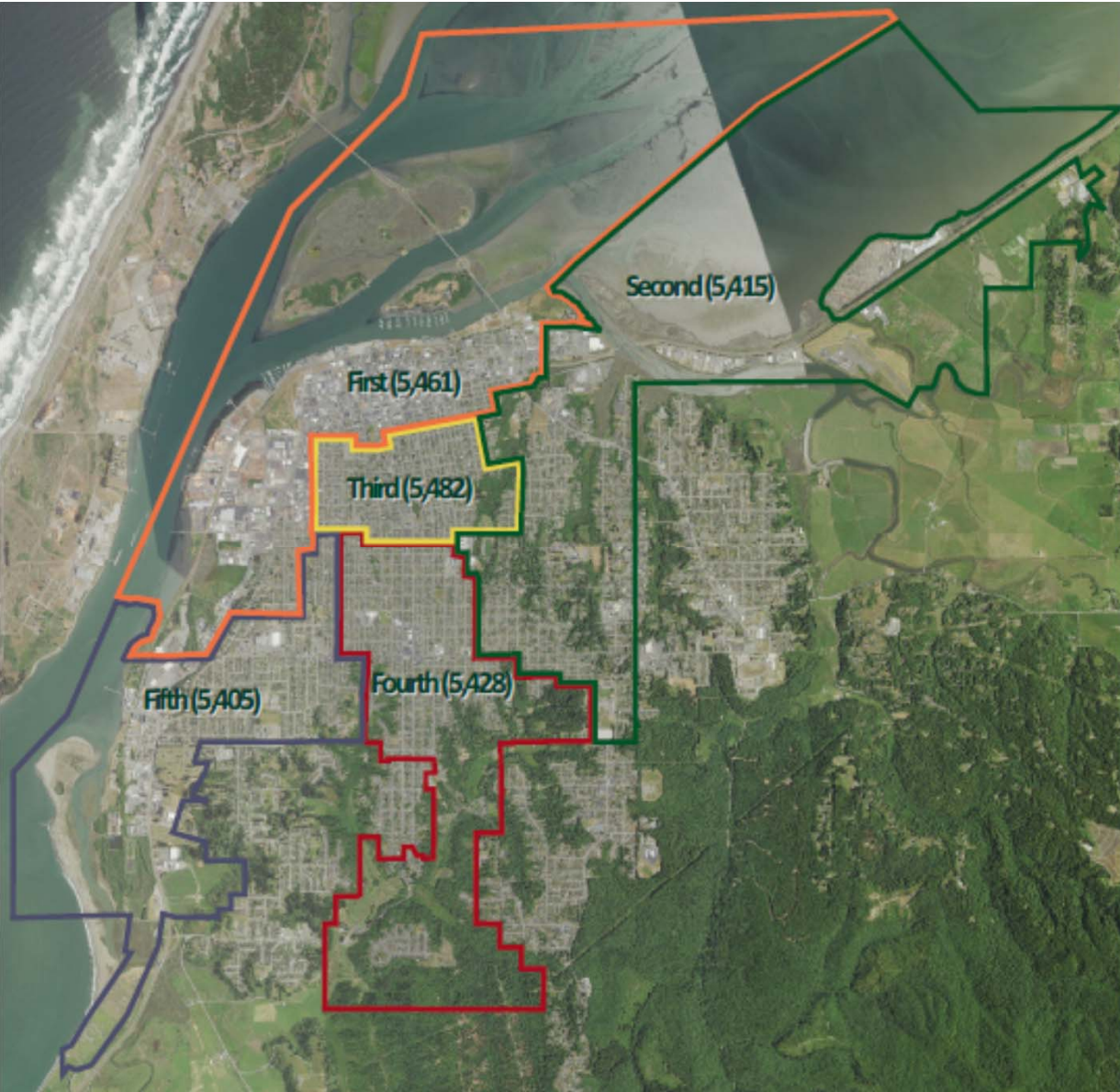


WARD 5 (s1)

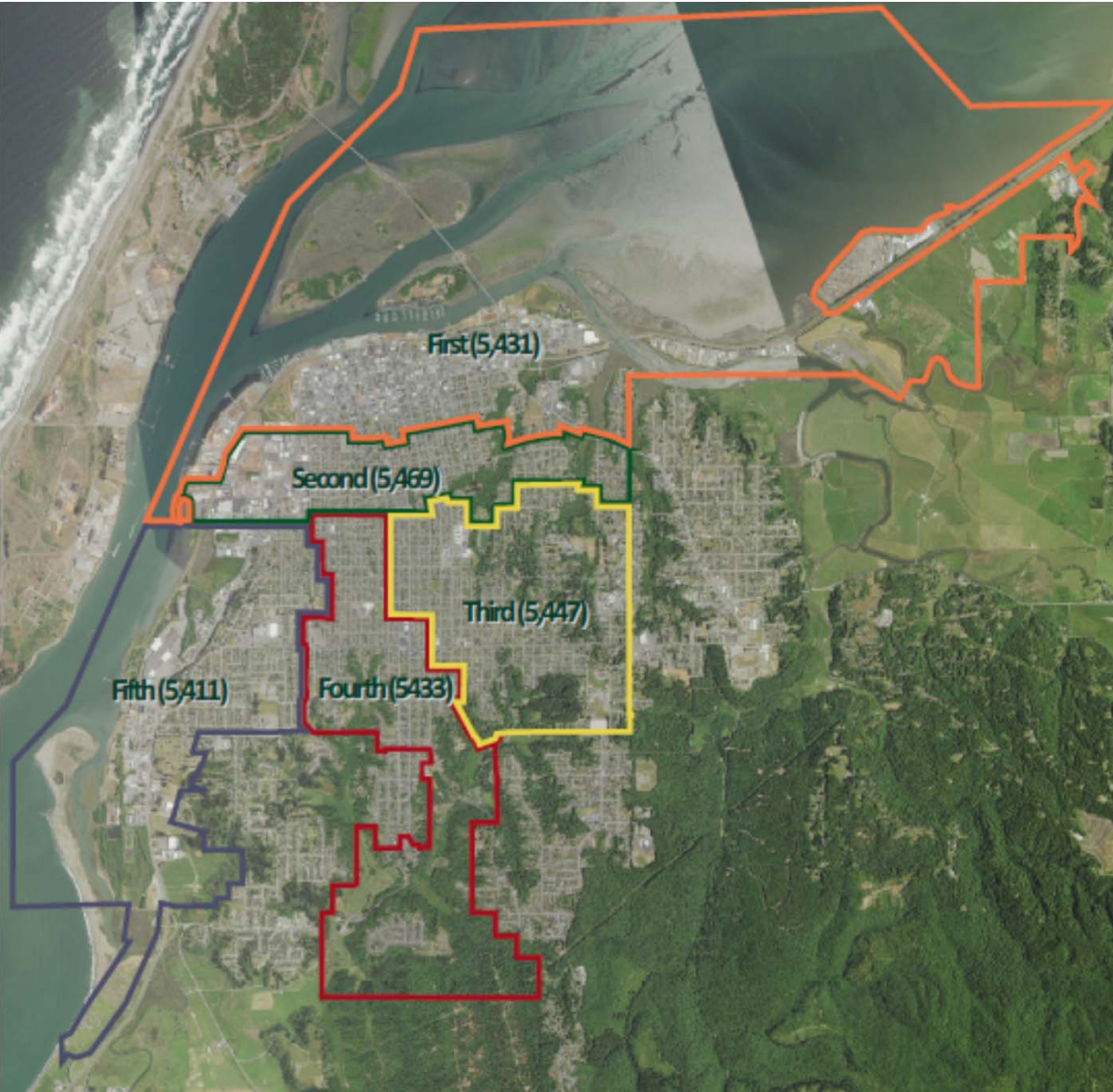


WARD 5



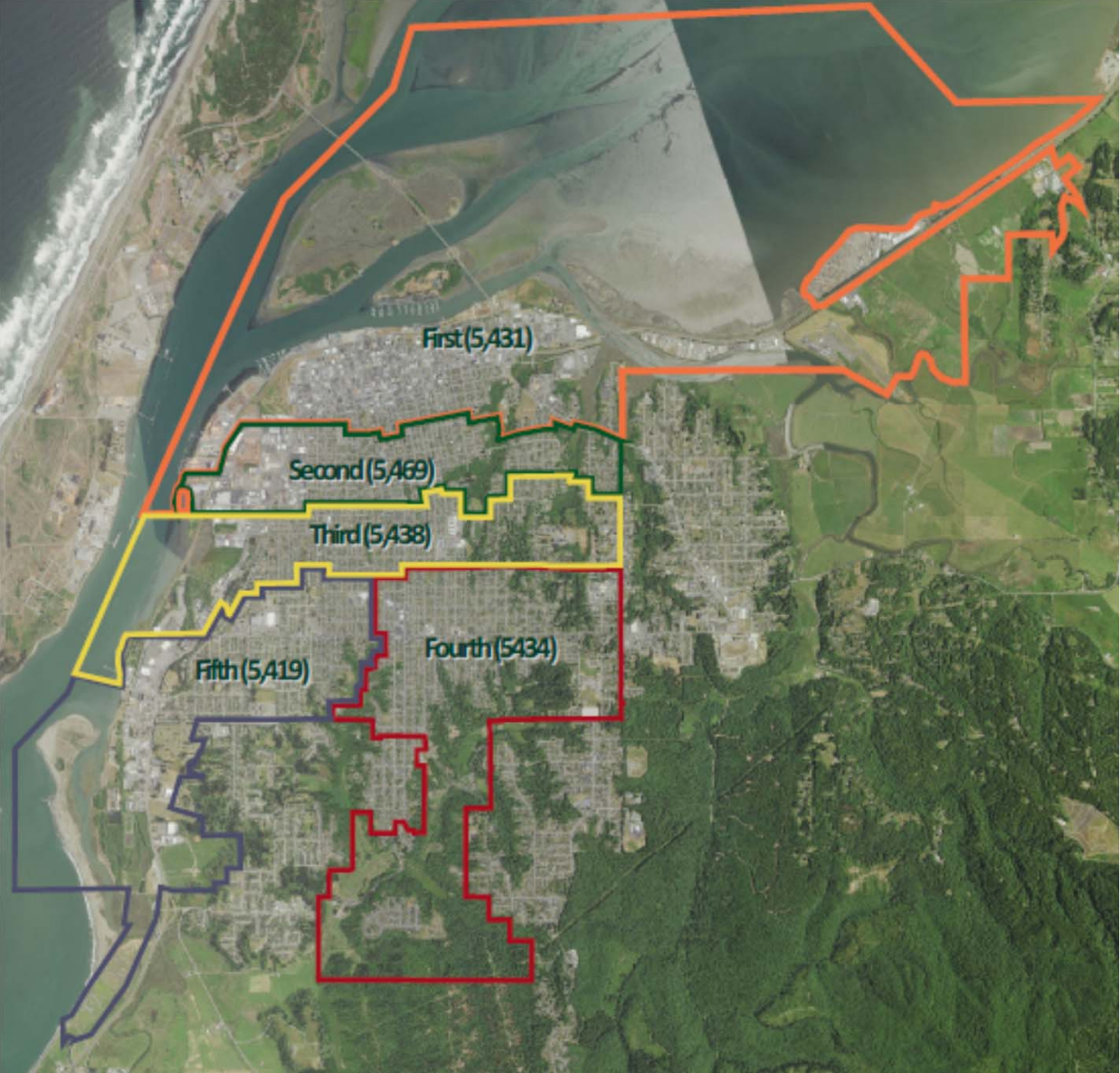


SCENARIO 1

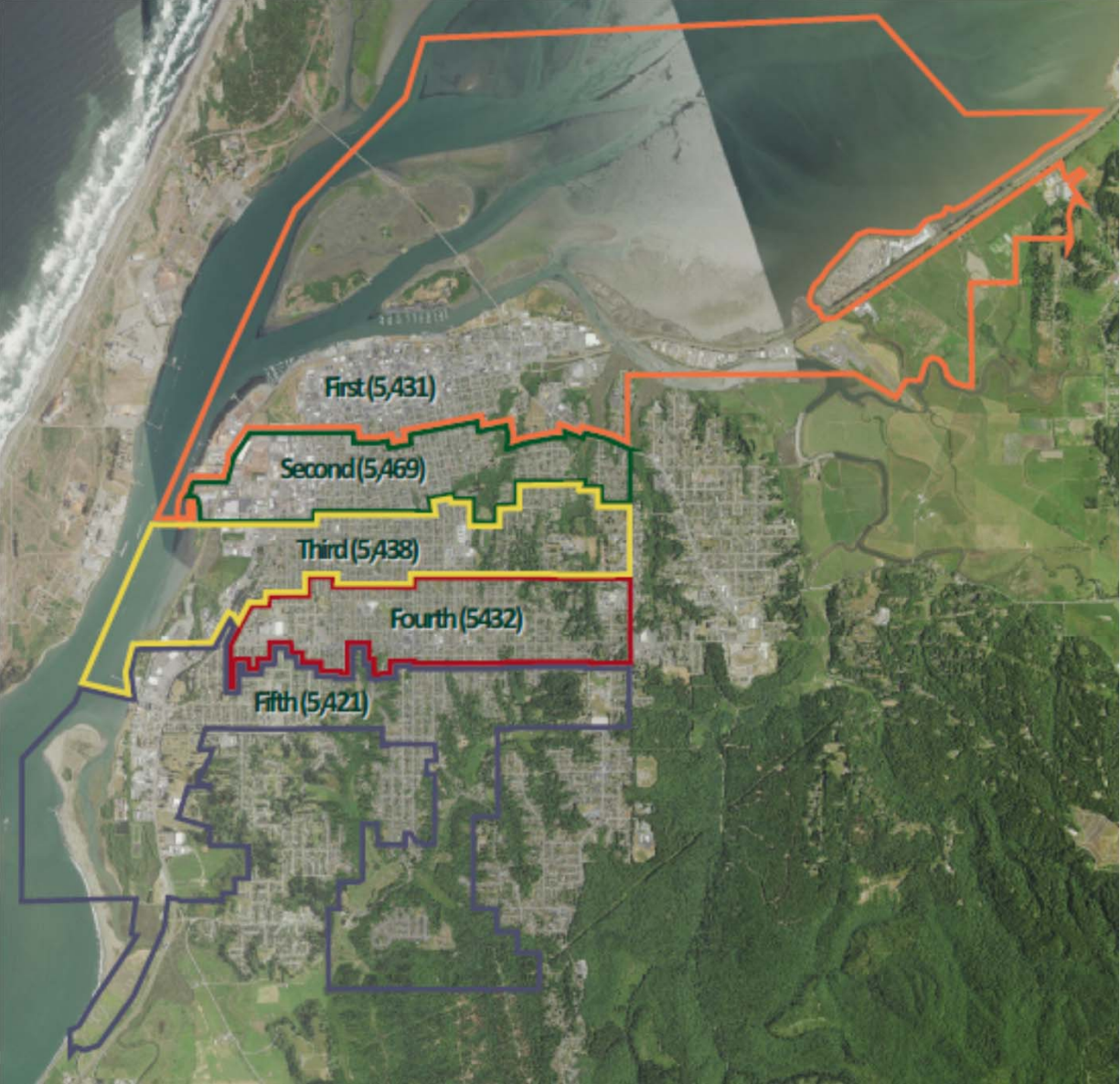


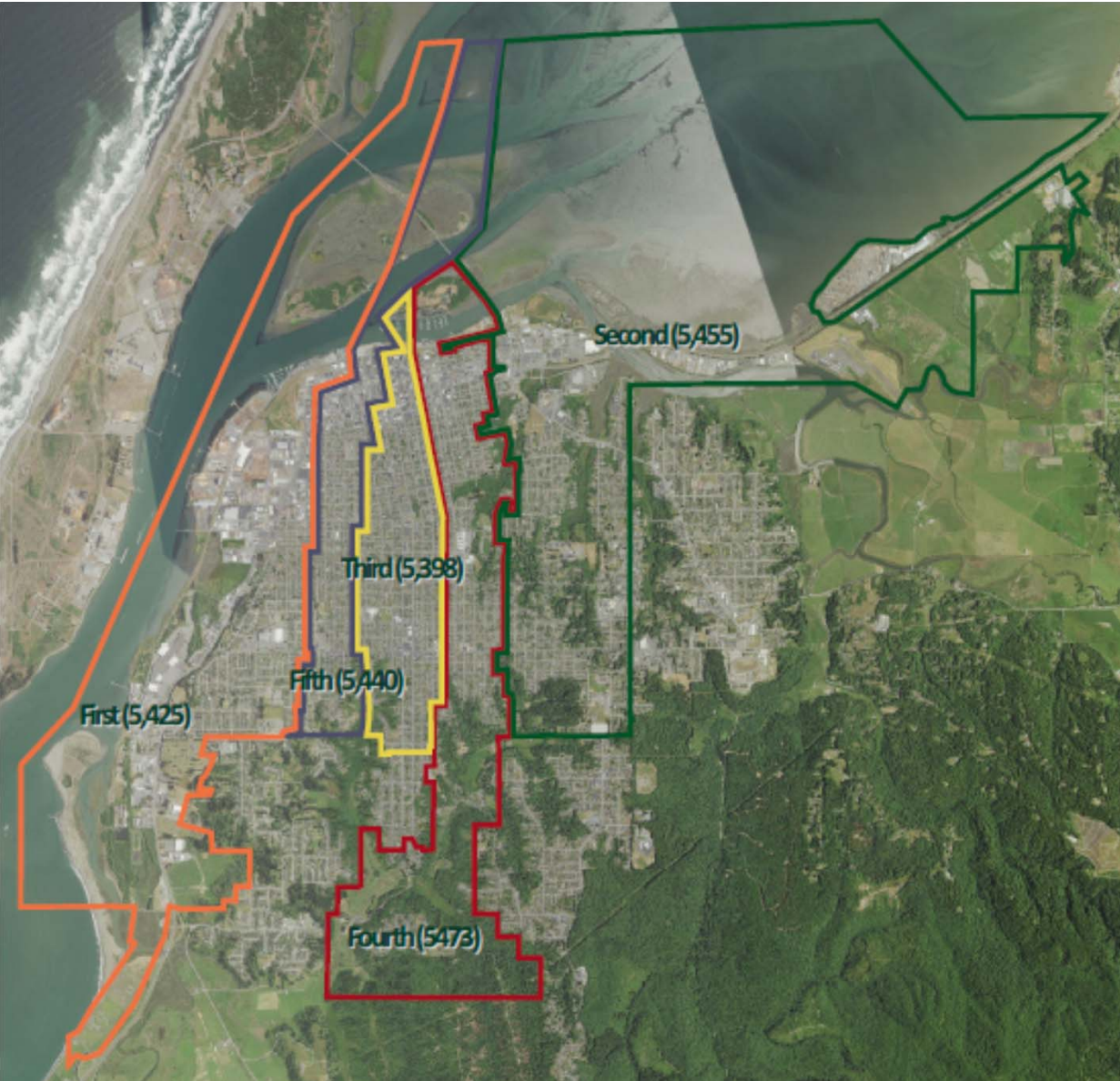
SCENARIO 2

SCENARIO 3



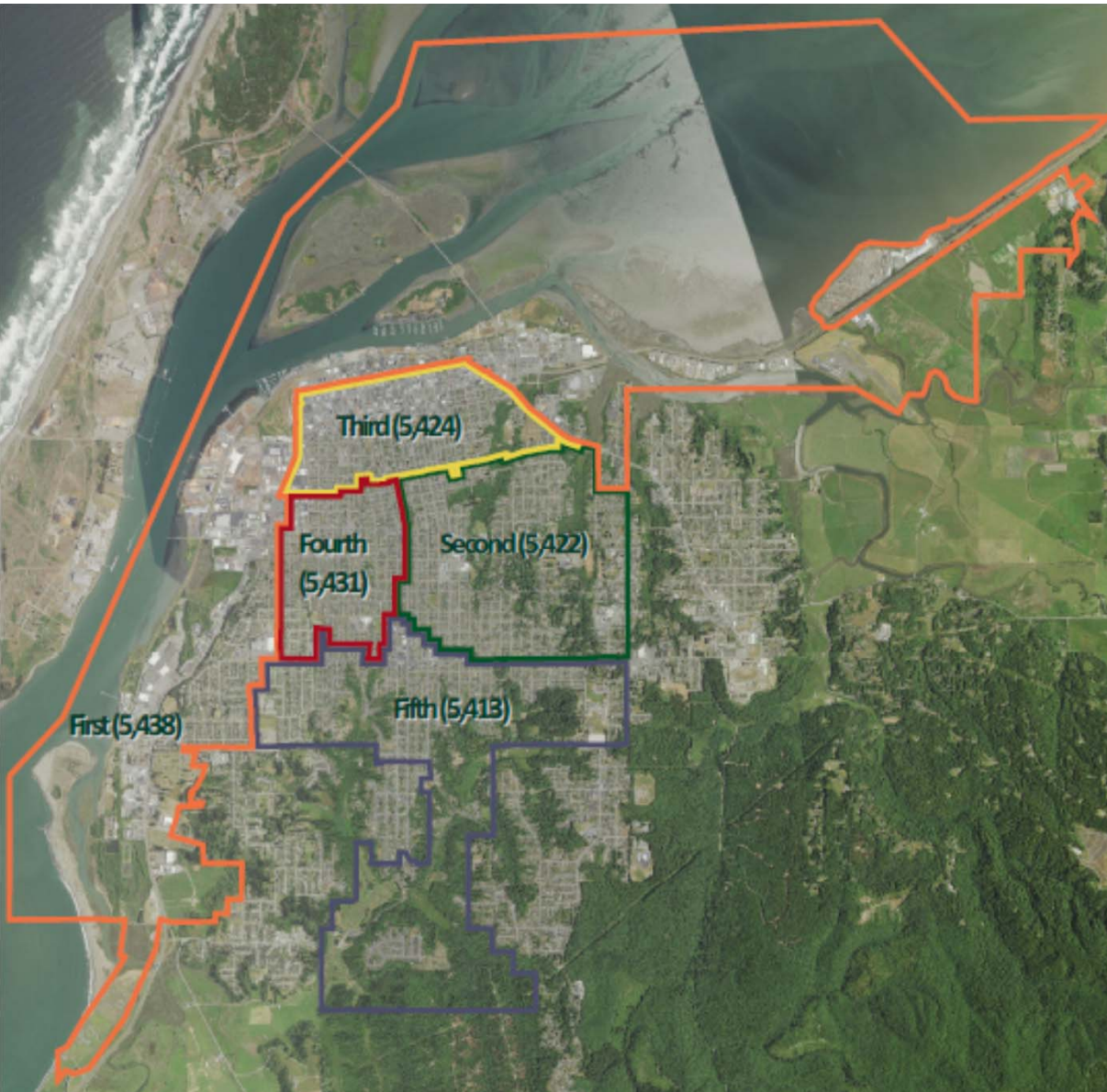
SCENARIO 4





SCENARIO 5

SCENARIO 6



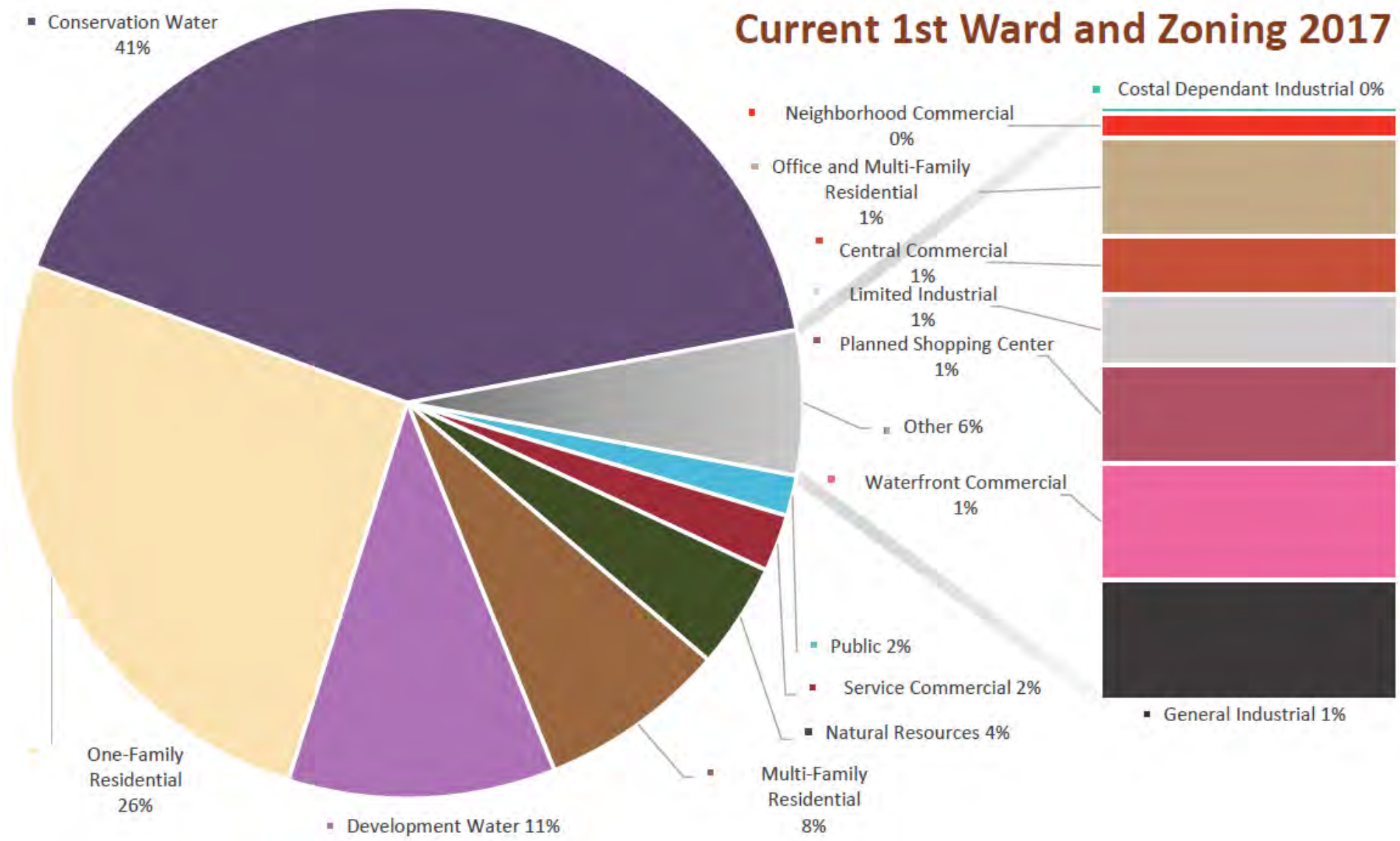
SCENARIO 7



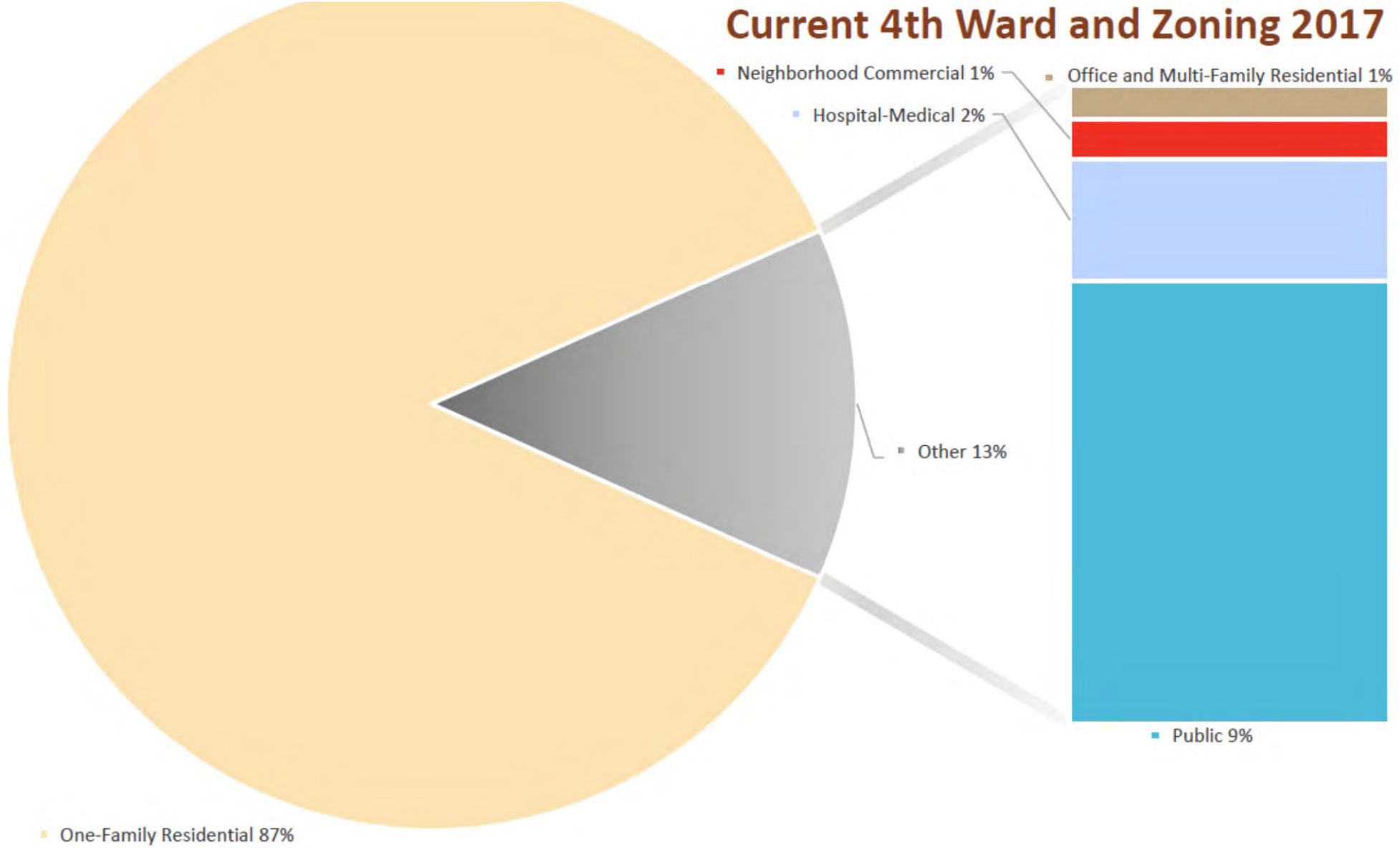
How many possible scenarios?

- Hundreds of thousands...
- But, there is limited set of scenarios with noticeable differences.
- These 7 scenarios cover the majority of the total “noticeably different” possibilities.

Current 1st Ward and Zoning 2017



Current 4th Ward and Zoning 2017



Staff is seeking direction

- Do you want to hire a consultant?
- Do you want to review the Scenarios developed by staff?
- Do you want zoning to be part of the analysis?
- What else would you like to see analyzed?